



Free Questions for 300-835 by actualtestdumps

Shared by Duran on 15-04-2024

For More Free Questions and Preparation Resources

Check the Links on Last Page

Question 1

Question Type: MultipleChoice

Which two use cases can be accomplished using the Finesse JavaScript library? (Choose two.)

Options:

- A- Integrate customer relationship management capabilities into the Finesse agent desktop.
- B- Build a custom browser-based agent desktop.
- C- Build a Finesse gadget to add quick dial to the Finesse agent desktop.
- D- Build a Finesse gadget to create new agents on the Finesse system.
- E- Build a Finesse gadget to configure Finesse log levels for the Finesse administrator console.

Answer:

A, B

Question 2

Question Type: MultipleChoice

Refer to the exhibit.

complexType XCallingSearchSpaceMember

diagram	
namespace	http://www.cisco.com/AXL/API/12.5
children	routePartitionName index
used by	elements XCss/members/member UpdateCssReq/removeMembers/member UpdateCssReq/addMembers/member UpdateCssReq/members/member
source	<pre><xsd:complexType name="XCallingSearchSpaceMember"> <xsd:sequence minOccurs="0"> <xsd:element name="routePartitionName" type="axlapi:XfkType" minOccurs="1" maxOccurs="1"/> <xsd:element name="Index" type="axlapi:XInteger" minOccurs="1" maxOccurs="1"/> </xsd:sequence> </xsd:complexType></pre>

element XCallingSearchSpaceMember/routePartitionName

diagram													
type	axlapi:XfkType												
properties	content complex												
attributes	<table border="1"> <thead> <tr> <th>Name</th> <th>Type</th> <th>Use</th> <th>Default</th> <th>Fixed</th> <th>Annotation</th> </tr> </thead> <tbody> <tr> <td>uuid</td> <td>axlapi:XUUID</td> <td>optional</td> <td></td> <td></td> <td></td> </tr> </tbody> </table>	Name	Type	Use	Default	Fixed	Annotation	uuid	axlapi:XUUID	optional			
Name	Type	Use	Default	Fixed	Annotation								
uuid	axlapi:XUUID	optional											
source	<pre><xsd:element name="routePartitionName" type="axlapi:XfkType" minOccurs="1" maxOccurs="1"/></pre>												

element XCallingSearchSpaceMember/routePartitionName/index

diagram							
type	axlapi:XInteger						
properties	content simple						
attributes	<table border="1"> <thead> <tr> <th>Name</th> <th>Type</th> <th>Use</th> <th>Default</th> <th>Fixed</th> <th>Annotation</th> </tr> </thead> <tbody> </tbody> </table>	Name	Type	Use	Default	Fixed	Annotation
Name	Type	Use	Default	Fixed	Annotation		

When a Calling Search Space is updated and a new member is added, how is a member defined?

- A.

```
<member uuid="{F6E0CD00-EC18-F16D-32E1-80C9A7A3D602}">
  <routePartitionName uuid="{5F2B2FFD-C7D2-4F30-9EF5-60110B56B939}">pt_translation-
    pattern_n</routePartitionName>
  <index>1</index>
</member>
```
- B.

```
<member uuid="{F6E0CD00-EC18-F16D-32E1-80C9A7A3D602}">
  <routePartitionName>
    <uuid>"{5F2B2FFD-C7D2-4F30-9EF5-60110B56B939}"</uuid>
    <name>pt_translation-pattern_n</name>
  </routePartitionName>
  <index>1</index>
</member>
```
- C.

```
<member>
  <routePartitionName uuid="{5F2B2FFD-C7D2-4F30-9EF5-60110B56B939}">pt_translation-
    pattern_n</routePartitionName>
  <index>1</index>
</member>
```
- D.

```
<member">
  <routePartitionName uuid="{5F2B2FFD-C7D2-4F30-9EF5-60110B56B939}">
    <name>pt_translation-pattern_n</name>
  </routePartitionName>
  <index>1</index>
</member>
```

Options:

A- Option A

B- Option B

C- Option C

D- Option D

Answer:

D

Question 3

Question Type: DragDrop

Drag drop the code to create a valid AXL API script to create a new Route Partition, using the Python Zeep library. Not all options are used.

Answer Area

```
from requests import Session
from requests import auth
from zeep import Client
from zeep.transports import Transport

session = Session()
session.auth = auth. [ ] ('Administrato' , 'ciscopsdt')

client = Client(wsdl = [ ] , transport = Transport(session=session))

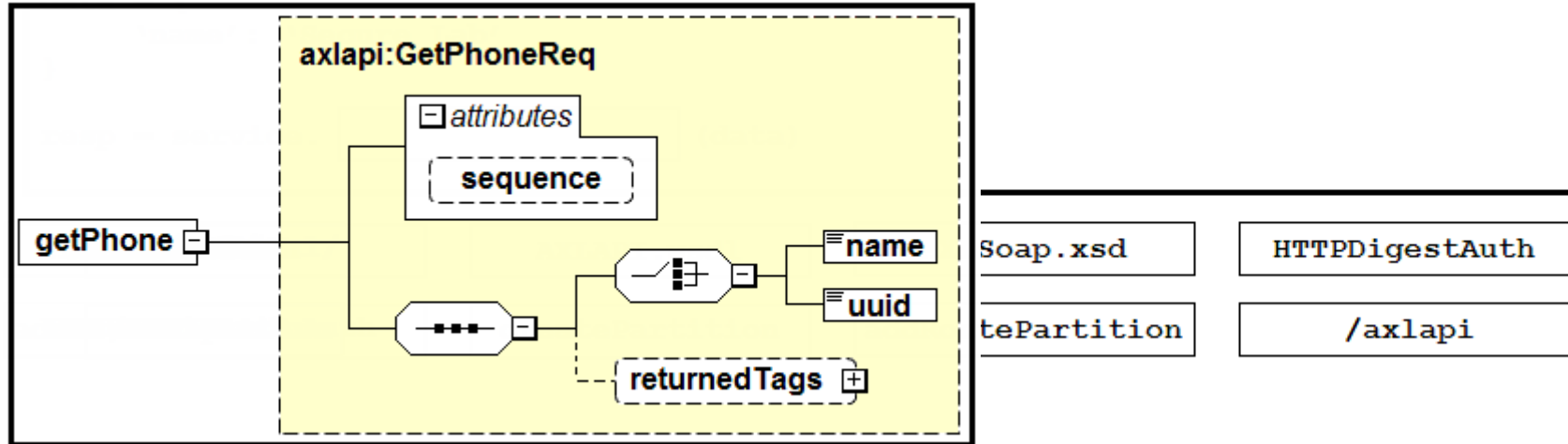
service = client.create_service('{http://www.cisco.com/AXLAPIService/}AXLAPIBinding' ,

'https://ds-ucm1251.cisco.com [ ] ')
```

Question 4

Question Type: MultipleChoice

Refer to the exhibit.



Based on the schema diagram in the exhibit, which two XML objects are valid AXL request elements? (Choose two.)

- A. `<soapenv:Body>
 <ns:getPhone sequence="1">
 <name>BOT209342098</name>
 <returnedtags><model/></returnedtags>
 </ns:getPhone>
</soapenv:Body>`
- B. `<soapenv:Body>
 <ns:getPhone>
 <name>BOT209342098</name>
 <returnedTags><model/></returnedTags>
 </ns:getPhone>
</soapenv:Body>`
- C. `<soapenv:Body>
 <ns:getPhone>
 <name>BOT209342098</name>
 <uuid>{2B1931A2-8FC2-A0C2-7282-B88B5A6356A0}</uuid>
 </ns:getPhone>
</soapenv:Body>`
- D. `<soapenv:Body>
 <ns:getPhone sequence="1">
 <uuid>{2B1931A2-8FC2-A0C2-7282-B88B5A6356A0}</uuid>
 </ns:getPhone>
</soapenv:Body>`
- E. `<soapenv:Body>
 <ns:getPhone sequence="1">
 <name>BOT209342098</name>
 <returnedTags>All</returnedTags>
 </ns:getPhone>
</soapenv:Body>`

Options:

A- Option A

B- Option B

C- Option C

D- Option D

E- Option E

Answer:

A, D

Question 5

Question Type: MultipleChoice

After the AXL query ns:updatePhone is used to upgrade a phone configuration successfully, the phone does not reflect the change. Which other method must be performed for the change to take effect?

Options:

A- ns:getPhone

B- ns:restartPhone

C- ns:rebootPhone

D- ns:savePhone

Answer:

B

Question 6

Question Type: DragDrop

Drag and drop the code snippets to create a valid AXL API request. Not all options are used.

Answer Area

Content-Type: text.xml

Content-Length: 726

Host: cucm.cisco.com:8443

Authorization:

<soapenv:Envelope xmlns:soapenv="http://schemas.xmlsoap.org/soap/envelope/"

xmlns:ns="

">

<soapenv:Body>

<ns:addUcService sequence="1">

<ucService>

<serviceType>Video Conference Scheduling Portal</serviceType>

<productType>Telepresence Management System</productType>

<name>testConferenceSchedulingPortal1</name>

<hostnameorip>10.10.10.12</hostnameorip>

<port>8443</port>

<protocol>https</protocol>

<ucServiceXml>

<TmsPortalUrl>http://10.10.10.12/</TmsPortalUrl>

</ucServiceXml>

</ucService>

</ns:addUcService>

</soapenv:Body>

</soapenv:Envelope>

AXL-Version: "CUCM:DB ver=11.5 addUcService"

AXL-Version: "CUCM:DB ver=11.5 addUcService"

Bearer: VWRtaW46cGEgc3duc0=

Bearer: VWRtaW46cGEgc3duc0=

Answer:

Question 7

Question Type: DragDrop

Drag and drop the XML snippets onto the AXL request to build a request that sets the cluster-wide Call Park Reversion Timer to 2 minutes. Not all options are used.

Answer Area

```
<soapenv:Envelope xmlns:soapenv="http://schemas.xmlsoap.org/soap/envelope/"  
  xmlns:ns="http://www.cisco.com/AXL/API/11.5">
```

Answer: <soapenv:Header/>

```
<soapenv:Body>
```

```
  <[redacted]>
```

```
    <[redacted]>
```

```
    <[redacted]>
```

```
      <service>Cisco CallManager</service>
```

```
      <value>120</value>
```

```
    <[redacted]>
```

```
</soapenv:Body>
```

```
</soapenv:Envelope>
```

```
  <name>CallParkDisplayTimer</name> >
```

```
<name>CallParkReversionTimeout</name> <name>
```

```
<ns:updateProcessNodeService>
```

```
<processNodeName>Default</processNodeName> <name>
```

```
</ns:updateServiceParameter>
```

```
<ns:updateServiceParameter>
```

```
</ns:updateProcessNodeService>
```

```
<processNodeName>EnterpriseWideData</processNodeName> <name>
```

To Get Premium Files for 300-835 Visit

<https://www.p2pexams.com/products/300-835>

For More Free Questions Visit

<https://www.p2pexams.com/cisco/pdf/300-835>

