



Free Questions for 300-630 by actualtestdumps

Shared by Graves on 12-12-2023

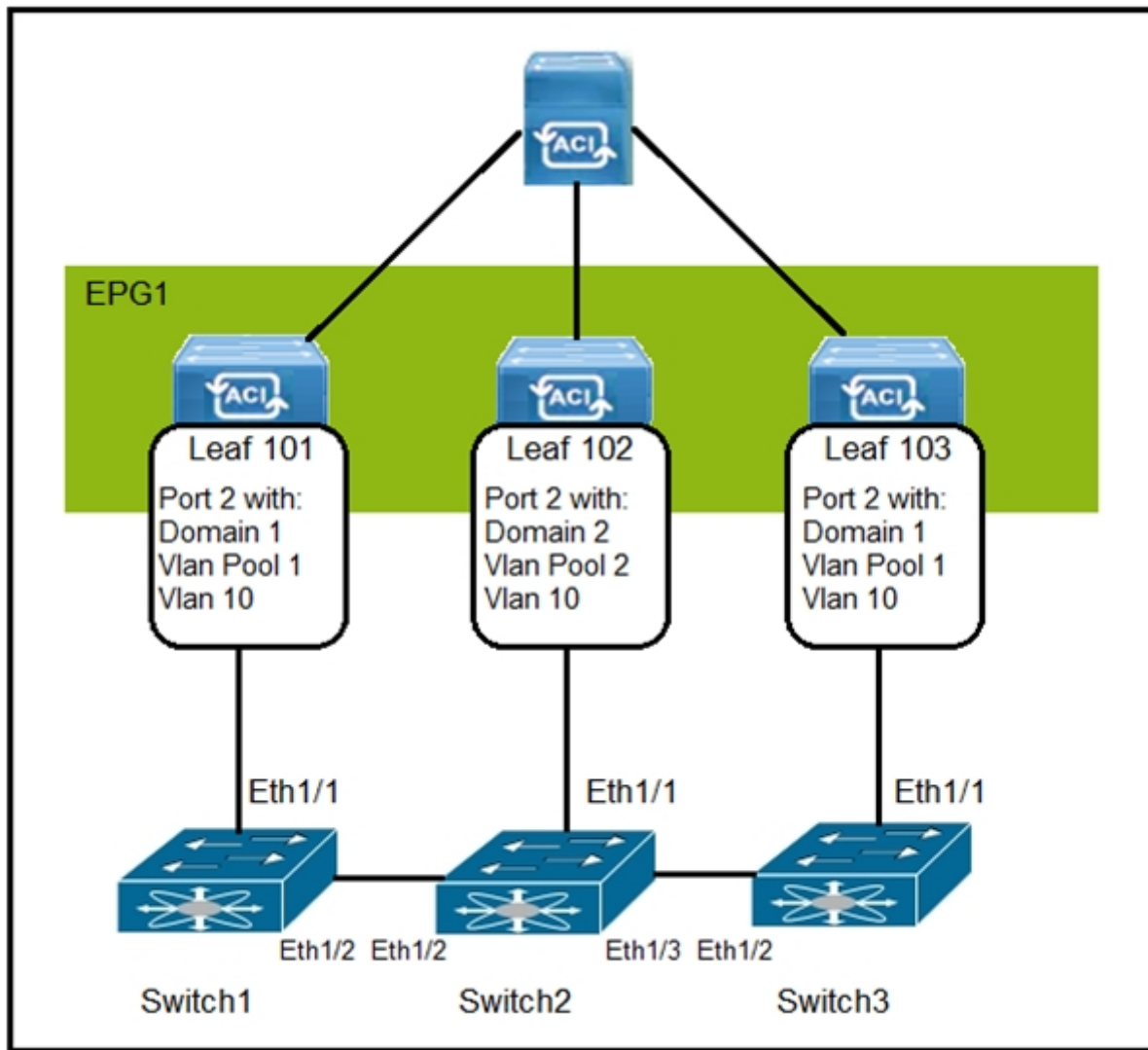
For More Free Questions and Preparation Resources

Check the Links on Last Page

Question 1

Question Type: MultipleChoice

Refer to the exhibit.



How are the STP BPDUs forwarded over Cisco ACI fabric?

Options:

- A- STP BPDUs that are generated by Switch2 are received by Switch1 and Switch3.
- B- Cisco ACI fabric drops all STP BPDUs that are generated by the external switches.
- C- Cisco ACI acts as the STP root for all three external switches.
- D- STP BPDUs that are generated by Switch1 are received only by Switch3.

Answer:

A

Question 2

Question Type: MultipleChoice

Where are STP BPDUs flooded in Cisco ACI fabric?

Options:

- A- in the bridge domain VLAN

- B-** in the native VLAN ID
- C-** in the access encapsulation VLAN part of different VLAN pools
- D-** in the VNID that is assigned to the FD VLAN

Answer:

A

Question 3

Question Type: MultipleChoice

What are two characteristics of Cisco ACI and Spanning Tree Protocol interaction? (Choose two.)

Options:

- A-** When a TCN BPDU is received in a VLAN, Cisco ACI flushes the endpoints for the associated encapsulation.
- B-** STP BPDUs are dropped due to MCP.
- C-** MST BPDUs are flooded correctly in Cisco ACI fabric without additional configuration.
- D-** BPDU filter and BPDU guard can be configured on Cisco ACI leaf edge ports.

E- Cisco ACI must be configured as the STP root for all VLANs.

Answer:

D, E

Question 4

Question Type: MultipleChoice

An engineer must implement a full mesh Cisco ACI Multi-Site architecture. Which action must be taken on each spine to accomplish this goal?

Options:

- A-** Configure BGP-EVPN Router-ID
- B-** Configure Multi-Pod Data-Plane TEP
- C-** Configure Overlay Unicast TEP
- D-** Configure Overlay Multicast TEP

Answer:

A

Explanation:

<https://www.cisco.com/c/en/us/solutions/collateral/data-center-virtualization/application-centric-infrastructure/white-paper-c11-739609.html>

Question 5

Question Type: MultipleChoice

What is a characteristic of a stretched bridge domain solution between Cisco ACI sites with Layer 2 flood disabled?

Options:

- A-** The application profile that is associated to the bridge domain have local significance in each site.
- B-** The tenant and VRF that associated to the bridge domain have local significance in each site.
- C-** Headend replication is used for BUM traffic between sites.

D- IP mobility is ensured between sites for disaster recovery.

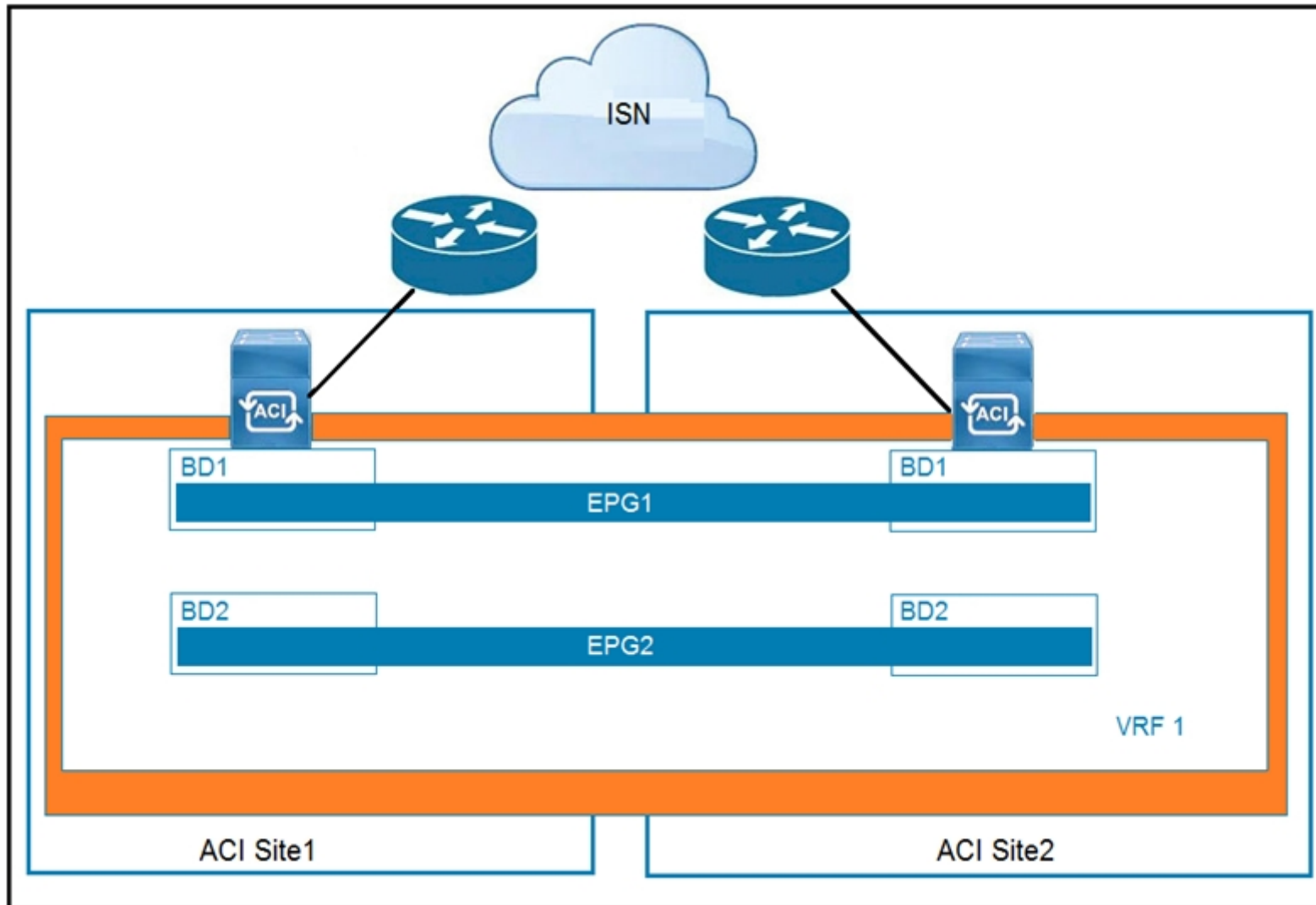
Answer:

B

Question 6

Question Type: MultipleChoice

Refer to the exhibit.



Which feature is available across sites if EPGs are stretched?

Options:

- A- active-active high-availability firewall clustering
- B- Layer 3 routing between sites
- C- Layer 2 flooding across sites
- D- live virtual machine migration

Answer:

B

Question 7

Question Type: MultipleChoice

What is a use of the Overlay Multicast TEP in Cisco ACI Multi-Site communication?

Options:

- A- to perform headend replication

B- to act as the source IP for BUM traffic

C- to establish MP-BGP adjacencies with remote spines

D- to send and receive unicast VXLAN data plane traffic

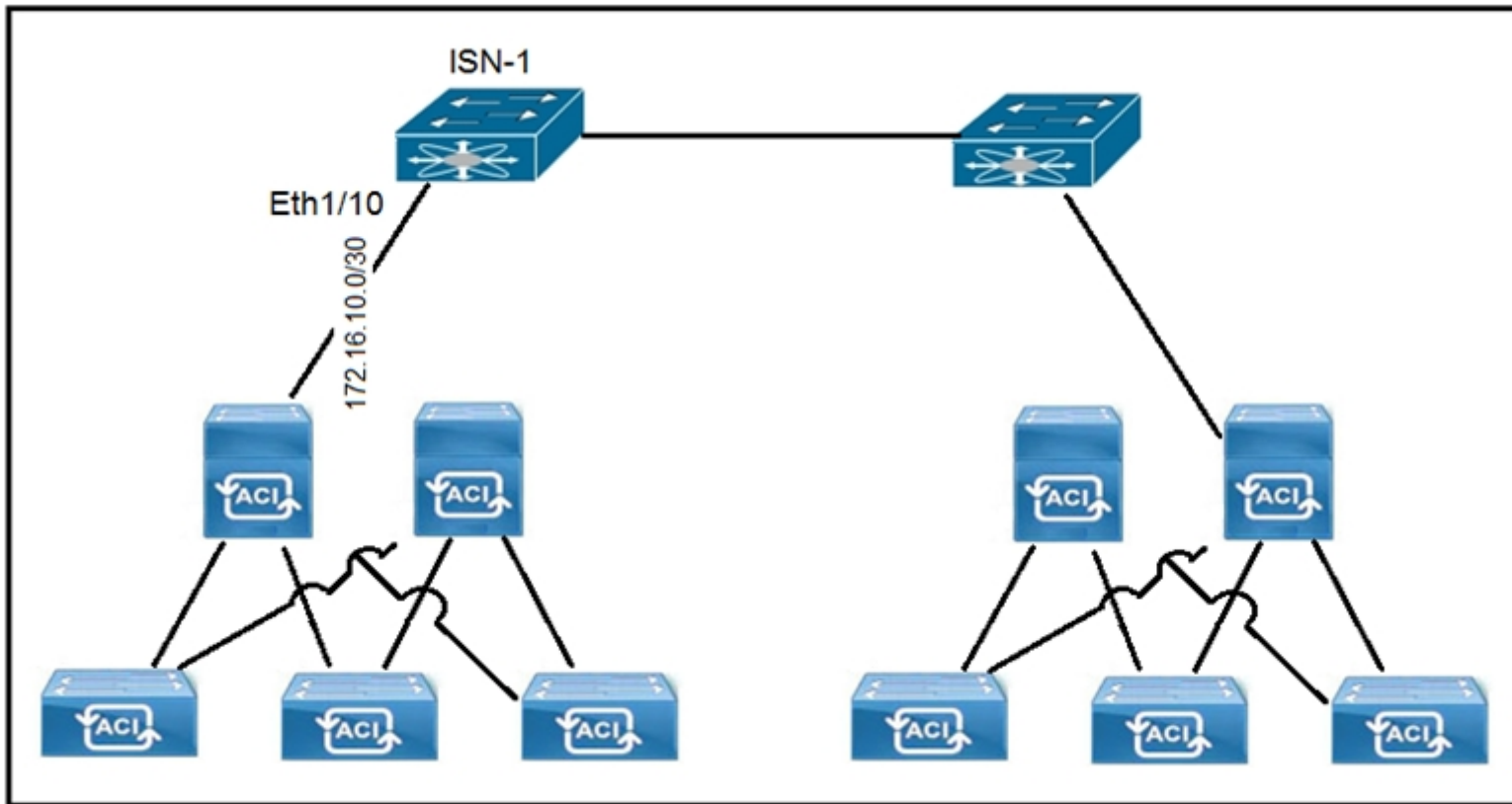
Answer:

B

Question 8

Question Type: MultipleChoice

Refer to the exhibit.



A customer implements Cisco ACI Multi-Site with default MTU settings between two sites. Which configuration should be applied on the interface Eth1/10 on the ISN-1 device?

- A. interface Ethernet1/10.4
mtu 9150
encapsulation dot1q 100
vrf member intersite
ip address 172.16.10.1/30
ip ospf network point-to-point
ip router ospf intersite area 0.0.0.1
no shutdown

- B. interface Ethernet1/10.4
mtu 9150
encapsulation dot1q 4
vrf member intersite
ip address 172.16.10.1/30
ip ospf network point-to-point
ip router ospf intersite area 0.0.0.1
no shutdown

- C. interface Ethernet1/10.44
mtu 2240
encapsulation dot1q 4
vrf member intersite
ip address 172.16.10.1/30
ip router ospf intersite area 0.0.0.1
no shutdown
- D. interface Ethernet1/10.4
mtu 2240
encapsulation dot1q 40
vrf member intersite
ip address 172.16.10.1/30
ip ospf network point-to-point
ip router ospf 1 area 0.0.0.1
no shutdown

Options:

- A- Option A
- B- Option B
- C- Option C
- D- Option D

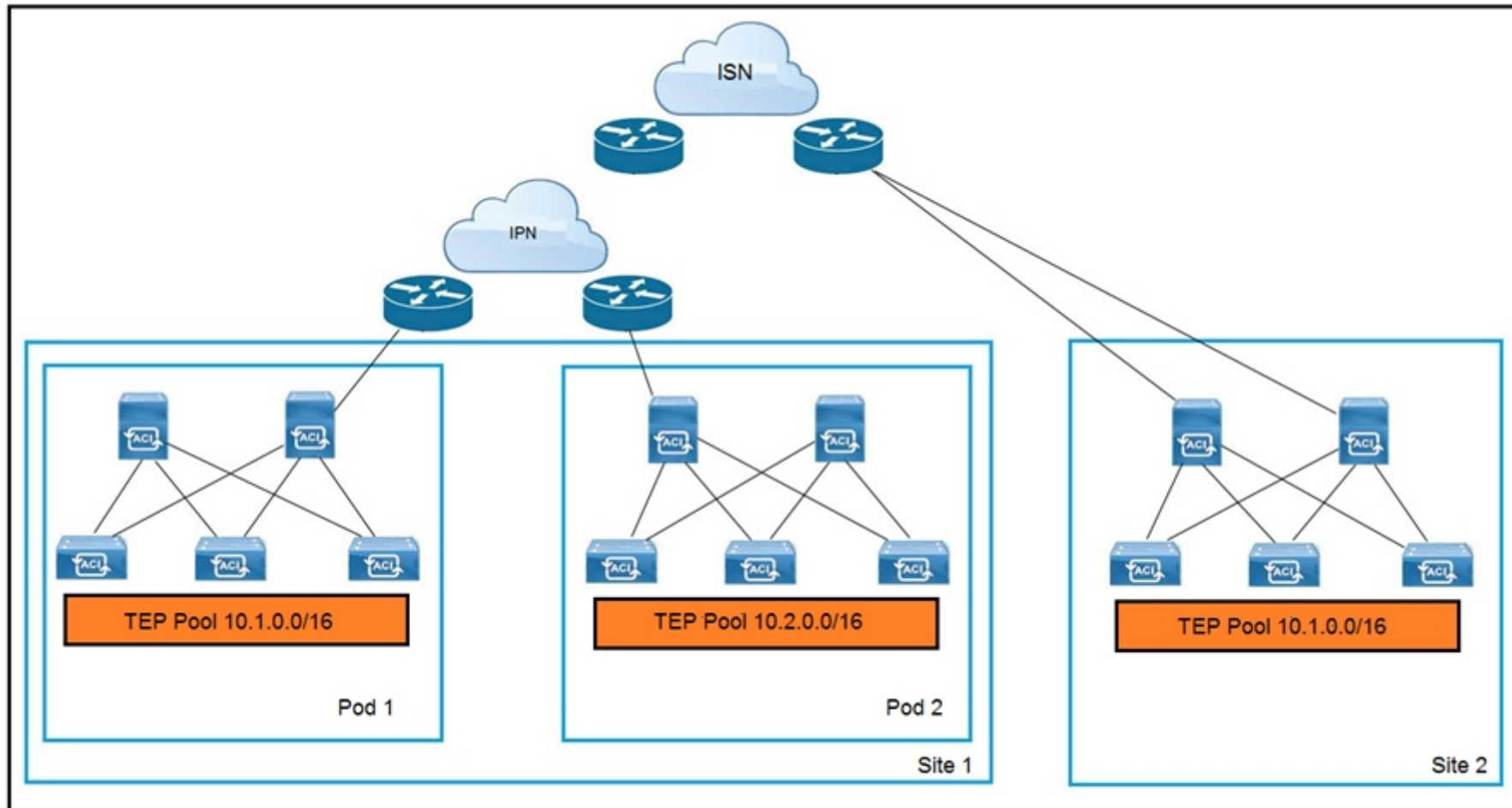
Answer:

A

Question 9

Question Type: MultipleChoice

Refer to the exhibit.



An engineer extends a Cisco ACI Multi-Pod setup to a Cisco ACI Multi-Site implementation. Which action allows the interconnection?

Options:

- A-** Configure BIDIR-PIM in the IPN and ISN
- B-** Use dedicated uplinks on Site 1 spines for ISN connections
- C-** Connect all spines to the IPN and ISN
- D-** Filter the advertisement of the Site 2 TEP pool into the IPN

Answer:

A

Question 10

Question Type: MultipleChoice

An engineer creates the objects that must be deployed at each site in Cisco ACI Multi-Site Orchestrator. Which action should be taken before the schema can be associated with the newly configured site?

Options:

- A-** Attach the templates to the newly configured site
- B-** Configure a provider for the Cisco ACI Multi-Site Orchestrator

C- Import existing policies from an existing tenant to Cisco ACI Multi-Site Orchestrator

D- Configure the Infra Site-Specific Settings

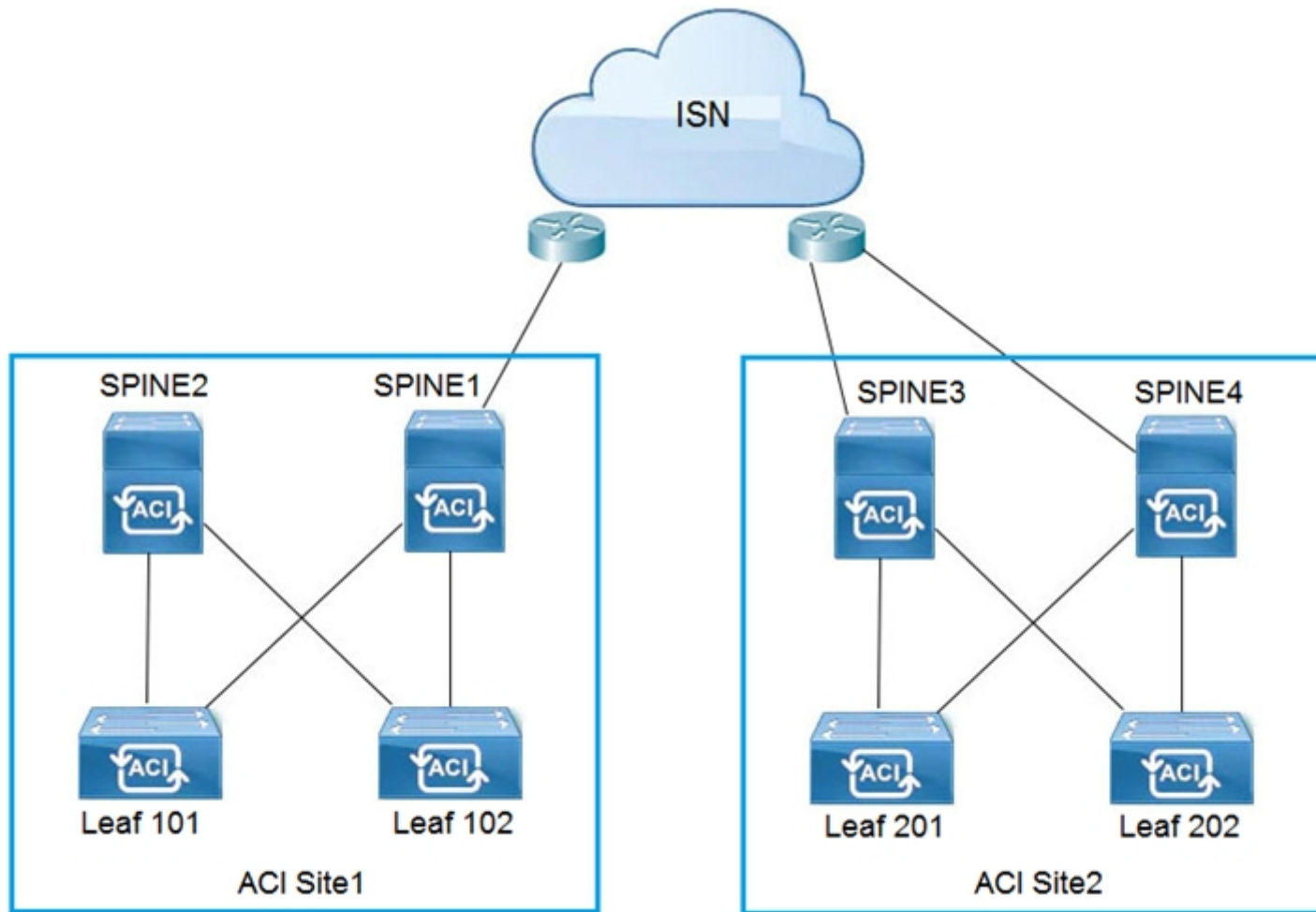
Answer:

A

Question 11

Question Type: MultipleChoice

Refer to the exhibit.



Which two configuration steps are required in ISN for Cisco ACI Multi-Site setup? (Choose two.)

Options:

- A- Connect Spine2 to ISN routers.
- B- Configure BIDIR-PIM throughout the ISN
- C- Increase ISN MTU to support the maximum MTU that is sent by endpoints
- D- Configure OSPF between spines and ISN routers
- E- Enable IGMPv3 on ISN routers

Answer:

D, E

To Get Premium Files for 300-630 Visit

<https://www.p2pexams.com/products/300-630>

For More Free Questions Visit

<https://www.p2pexams.com/cisco/pdf/300-630>

