



Free Questions for AND-802 by ebraindumps

Shared by Sloan on 06-06-2022

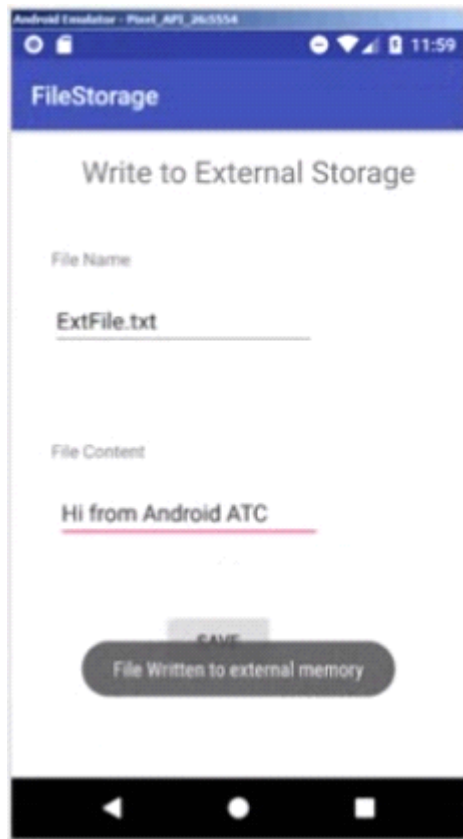
For More Free Questions and Preparation Resources

Check the Links on Last Page

Question 1

Question Type: MultipleChoice

What is the message "File Written to external memory" which appeared when the app user clicks "Save" button in the following image?



Options:

- A- It is tag added to Manifestfile.xml.
- B- This message must appear when the user clicks back button.
- C- It is auto message which appears when users use external storage.
- D- It is just a Toast message.

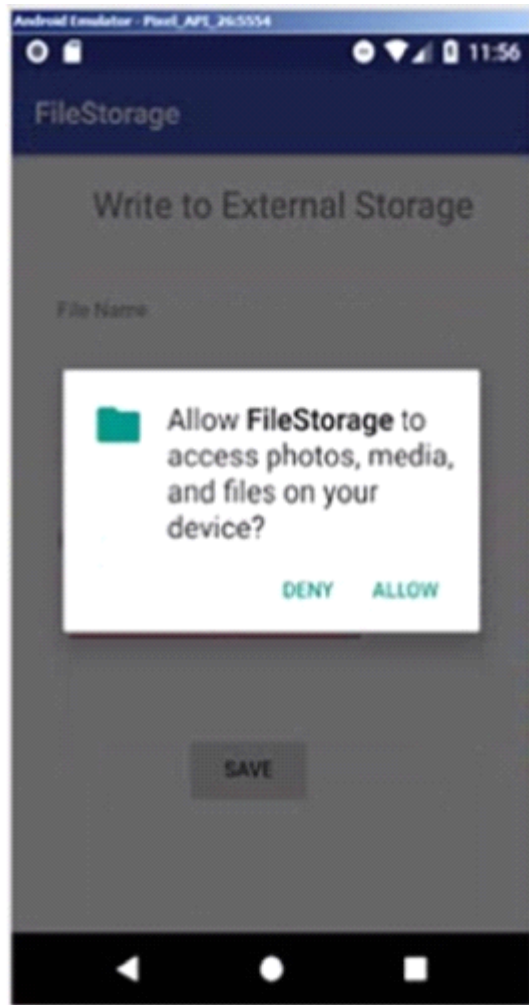
Answer:

D

Question 2

Question Type: MultipleChoice

Which of the following choices was added to AndroidManifest.xml to produce the following dialog below when the app tries to save data to external storage?



Options:

- A- `<uses android:name=-android.pemiission.WRITE_EXTERNAL_STORAGE'/>`
- B- `<uses-permlssion android:name-'android.pennission.WRITE_TO_EXTERNAL_2_STORAGE'/>`
- C- `<uses-petnHssion androtd:name-'android.WRITE EXTERNAL STORAGE'/>`
- D- `<usespermlsslsonandroid:name-'android.perniission.WRITE_EXTERNAL_STORAGE'/>`
- E- `<uses-permission android:name='android.permission.WRITE_EXTERNAL_STORAGE'/>`

Answer:

E

Question 3

Question Type: MultipleChoice

Android SQLite database files are stored under the..... directory.

Options:

- A- `/data/database//databases/`
- B- `/data/mydata//databases/`

C- /data/data//databases/

D- /datatiles//databases/

Answer:

C

Question 4

Question Type: MultipleChoice

Android cache is Not considered as an Android application storage.

Options:

A- False

B- True

Answer:

A

Question 5

Question Type: MultipleChoice

You must use permissions to prevent unauthorized access to your application data.

Options:

A- False

B- True

Answer:

B

Question 6

Question Type: MultipleChoice

The tag of a manifest file is a declaration for the whole application and each application component is declared in a sub-tag inside it.

Options:

A- True

B- False

Answer:

A

Question 7

Question Type: MultipleChoice

A manifest file (AndroidManifest.xml) describes the components of the application, which include the activities, services, broadcast receivers, and content providers that compose the application.

Options:

A- False

B- True

Answer:

B

Question 8

Question Type: MultipleChoice

In the following image of code, what is the purpose of using `MODE_PRIVATE` in the method `getPreferences()`?

```
class MainActivity : AppCompatActivity() {

    override fun onCreate(savedInstanceState: Bundle?) {
        super.onCreate(savedInstanceState)
        setContentView(R.layout.activity_main)
        save.setOnClickListener({
            savePreferences("save", enter_data.text.toString())
            show.isEnabled = true
        })
        show.setOnClickListener({
            load_data.setText(loadPreferences())
        })
        show.isEnabled = false

        /*
        * If there is no data currently stored then the
        * show button will be shown as disabled when
        * application is launched.
        */

        if (loadPreferences().isEmpty())
            show.isEnabled = true
    }

    private fun savePreferences(key: String, value: String) {
        val sharedPreferences = getPreferences(MODE_PRIVATE)
        val editor = sharedPreferences.edit()
        editor.putString(key, value)
        editor.commit()
    }

    private fun loadPreferences(): String {
        val sharedPreferences = getPreferences(MODE_PRIVATE)
        val savedData = sharedPreferences.getString("save", "")
        return savedData
    }
}
```

Options:

- A-** This allows you to store data and make it private to this application. Also, No other applications can access your saved data.
- B-** This allows you to share your data with other applications which have the same mode.
- C-** This allows you to run your apps in Android API 27 or higher.
- D-** This allows you to run your app with minimum use of device battery.

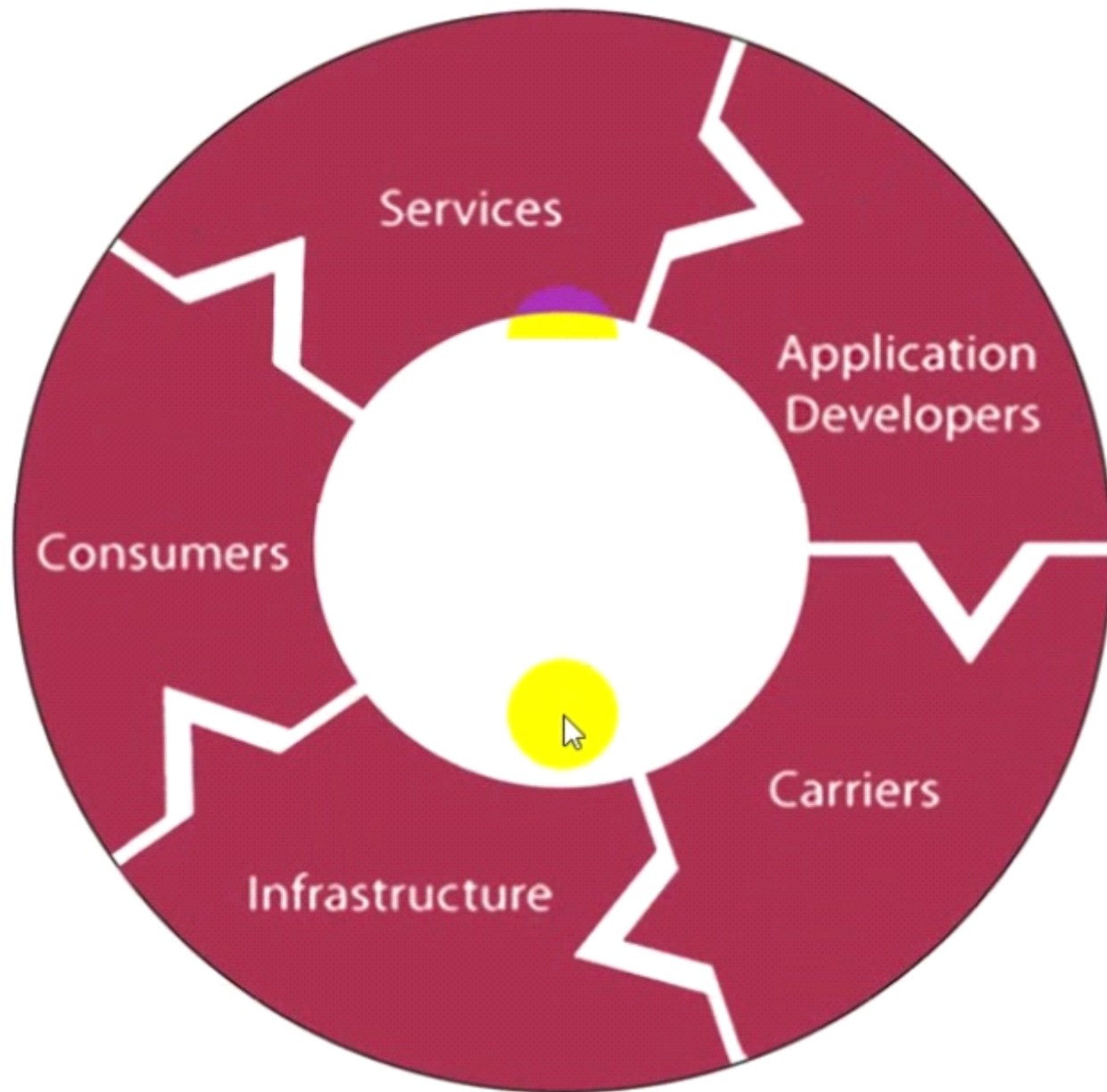
Answer:

A

Question 9

Question Type: MultipleChoice

The following image includes some components which you must be aware of to learn about the complexity of the security issue and the fact that software developers can only deal with security issues within their own applications. These components belong to



Options:

- A- Mobile Environment.
- B- Android Development.
- C- Telephone Land Lines Network.
- D- Internet.

Answer:

A

To Get Premium Files for AND-802 Visit

<https://www.p2pexams.com/products/and-802>

For More Free Questions Visit

<https://www.p2pexams.com/android/pdf/and-802>

