



Free Questions for AD01 by certsdeals

Shared by Vargas on 12-12-2023

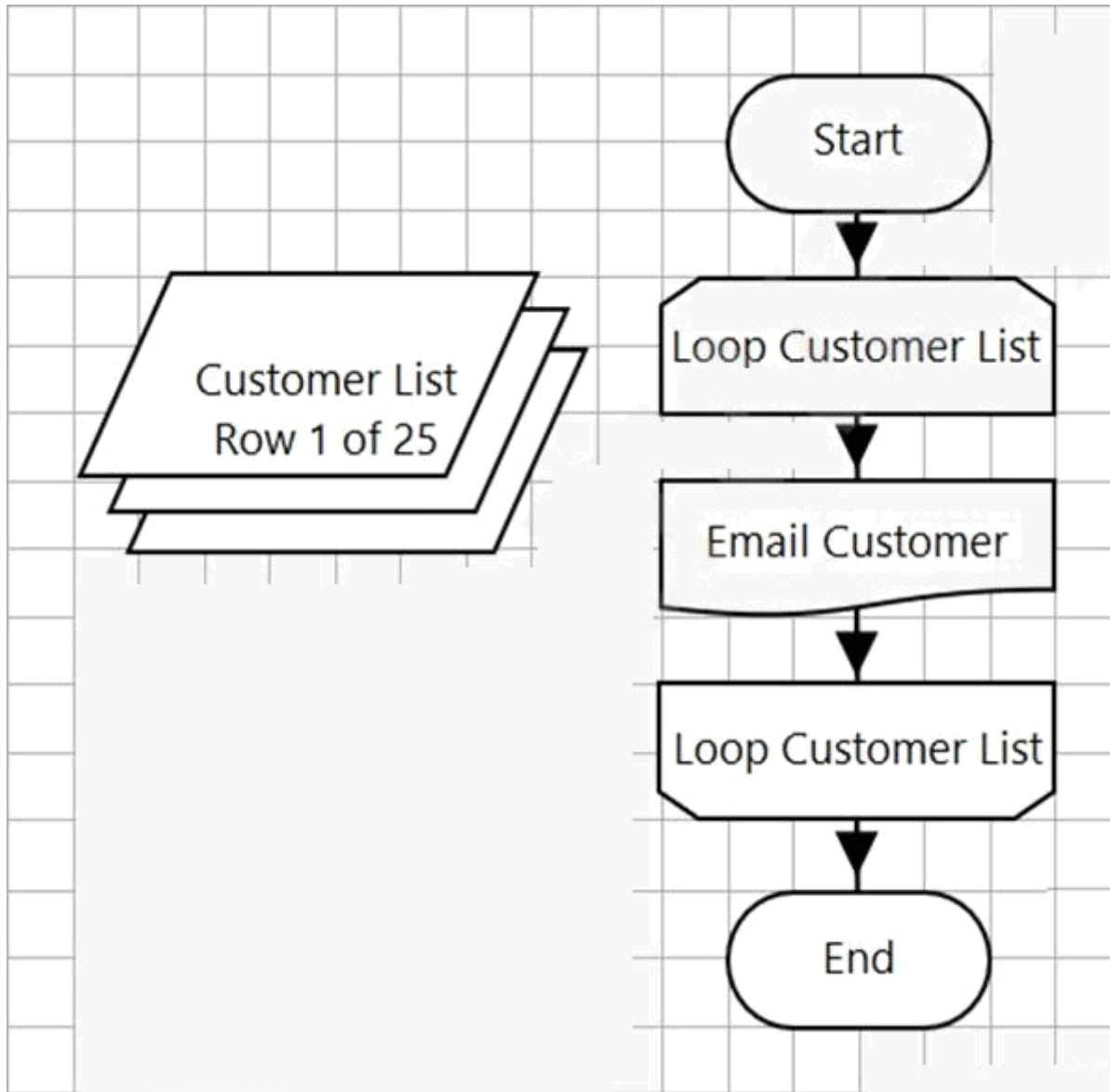
For More Free Questions and Preparation Resources

Check the Links on Last Page

Question 1

Question Type: MultipleChoice

Examine the following Process flow:



The 'Loop Customer List' loop is configured to loop through the 'Customer List' Collection.

Any Exceptions Encountered on the 'Email Customers' sub-page will be resolved in the same page.

How many times will the 'Email Customer' sub-page be executed?

Options:

- A- It's impossible to say without viewing the 'Email Customer' sub-page
- B- The loop will be infinite
- C- 0
- D- 25
- E- 1

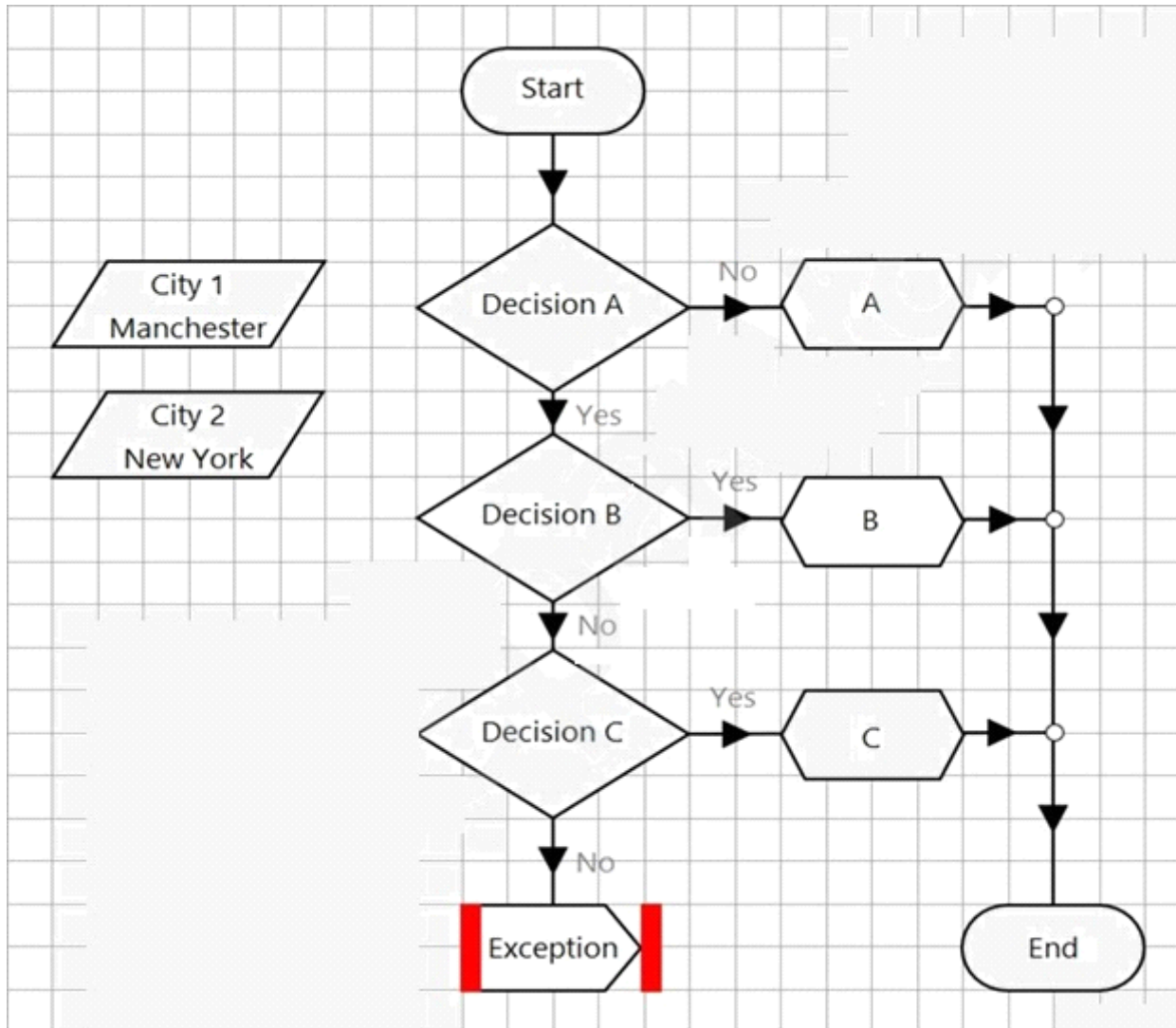
Answer:

E

Question 2

Question Type: MultipleChoice

Examine the following Blue Prism Process diagram:



The initial values for the 2 data items are displayed in the diagram above.

The expression in 'Decision A' is:

Len([City 1]) > Len([City 2])

The expression in 'Decision B' is:

Mid([City2].3,1) = " "

The expression in 'Decision C' is:

Left([City 1], 5) = "manch" AND EndsWith([City 2], "York")

What will happen when the process flow executes?

Options:

- A-** The diagram will flow through the Calculation stage named 'A'
- B-** The diagram will flow through the Calculation stage named 'B'
- C-** The diagram will flow to the Exception stage which will raise a new exception
- D-** The diagram will flow through the Calculation stage named 'C'

Answer:

D

Question 3

Question Type: MultipleChoice

Which area of Blue Prism would you find application logic and rules?

Options:

- A- Application Modeller
- B- Object Studio
- C- Process Studio
- D- Application Logic area of System Manager

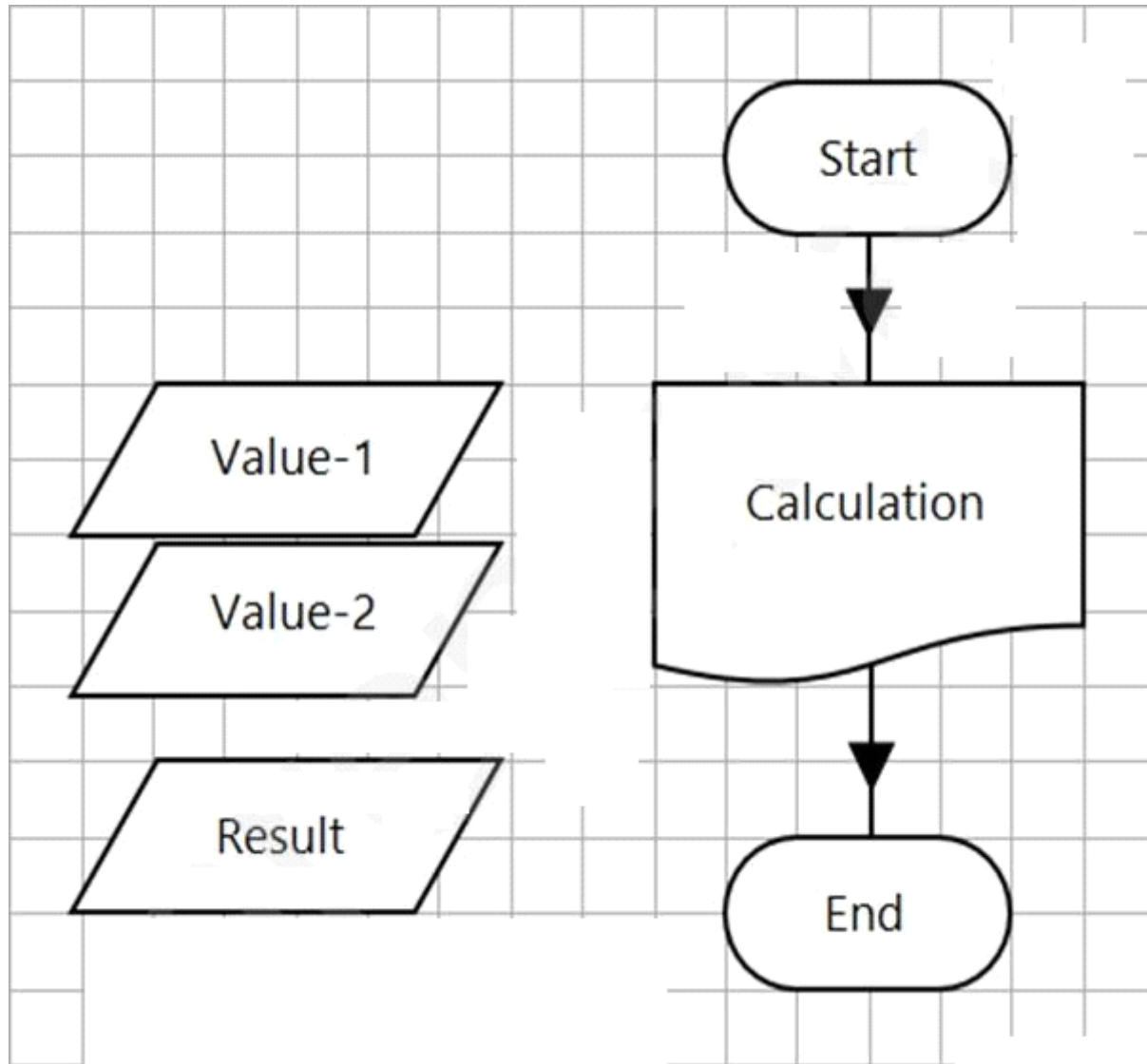
Answer:

A

Question 4

Question Type: MultipleChoice

Examine the following Process flow:



This is the Main Page of a simple process which calls the 'Calculation' Page before completing.

The data items are configured as follows:

Value-1 is a number data item with an initial value of 100.

Value-2 is a number data item with an initial value of 4.

Result is a number data item with no initial value.

The Calculation Page Reference stage is configured as follows:

Page Reference Properties

Name: Calculation

Description:

Page: Calculation

Inputs Outputs Conditions

Name	Data Type	Value
Value-1	Number	[Handle]
Value-2	Number	[Handle]

Page Reference Properties

Name: Calculation

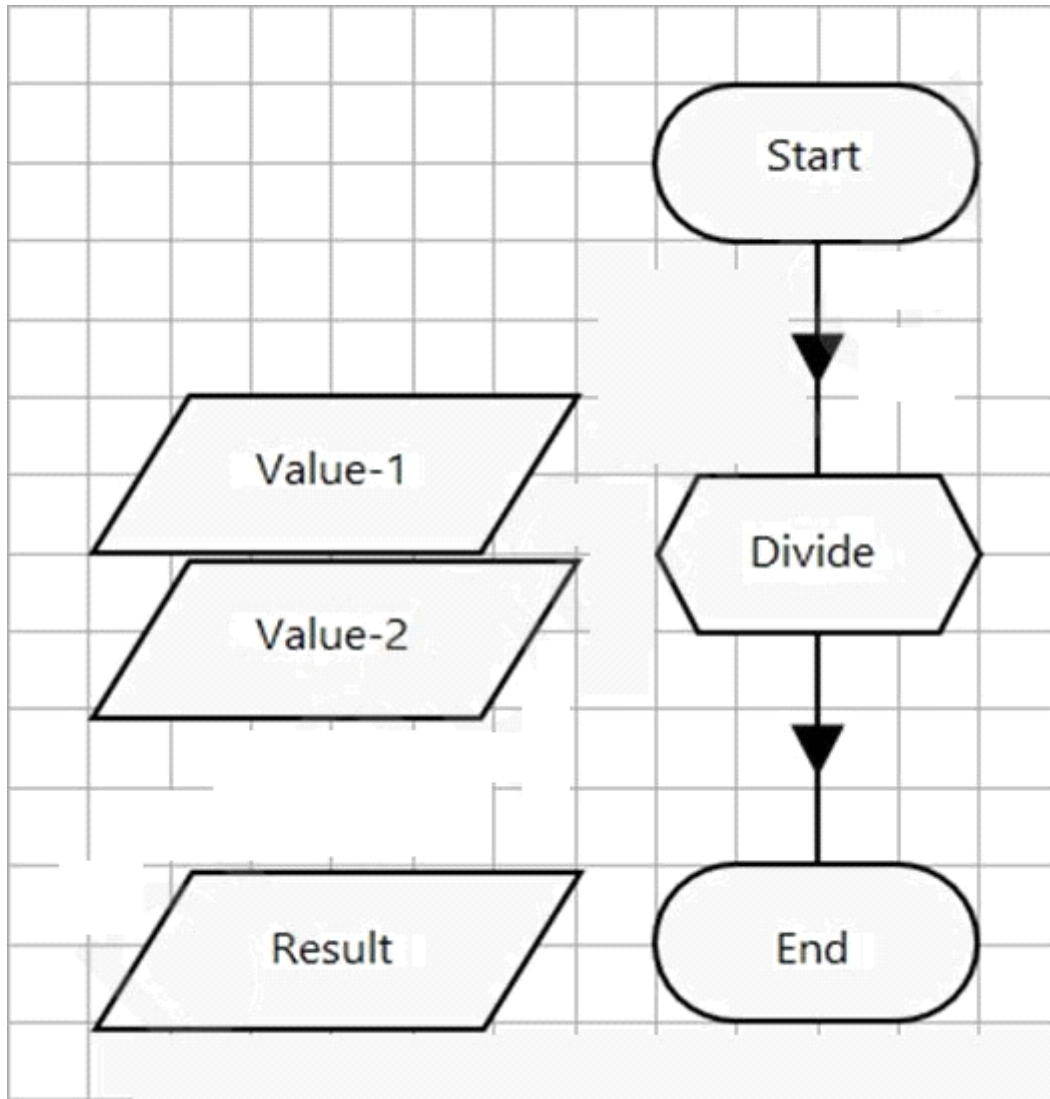
Description:

Page: Calculation

Inputs Outputs Conditions

Name	Data Type	Store in
Result	Number	Result

The Calculation Page is configured as follows:



The Data Items are configured as follow:

Value-1 is a Number data item with an initial value of 200

Value-2 is a Number data item with an initial value of 4

Result is a Number data item with no initial value

The Start stage is configured to pass through the Value-1 and Value-2 values as input parameters.

The 'Divide' Calculation stage expression is $[Value-1] / [Value-2]$

The End stage is configured to pass back the value of the Result data item as an output parameter.

What will be contained in the Result data item on the Main Page following the execution of the Process?

Options:

A- 25

B- 0

C- 50

D- 37.5

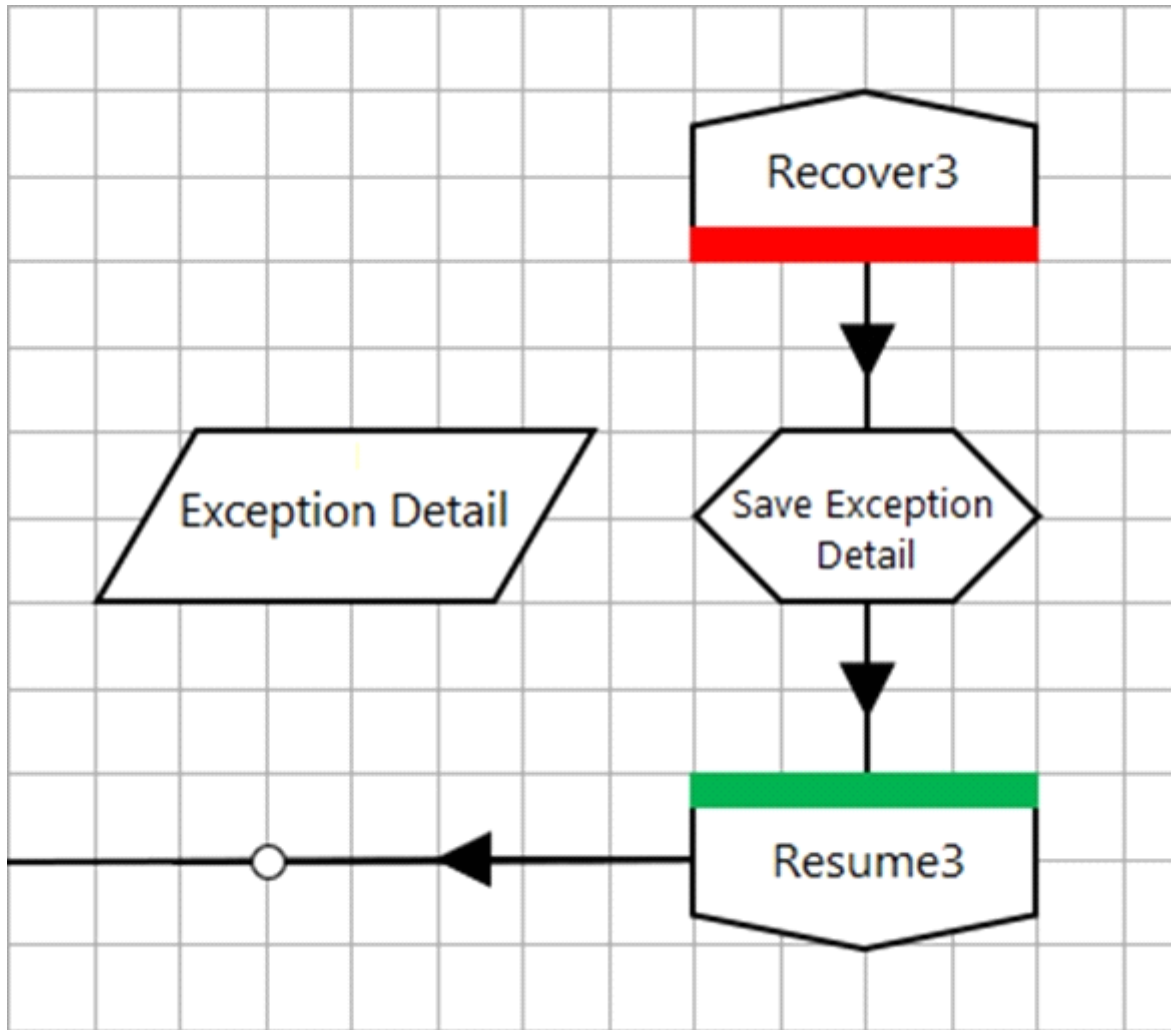
Answer:

B

Question 5

Question Type: FillInTheBlank

Examine the following recover flow taken from a Blue Prism Process:



The 'Exception Detail' data item has no initial value and has a data type of text.

The Calculation stage 'Save Exception Detail' will output the current exception detail to the 'Exception Detail' data item.

What expression would you use in the 'Save Exception Detail' stage to achieve this?

Answer:

Question 6

Question Type: MultipleChoice

What is the maximum number of Start stages that a Process sub-page can contain?

Options:

- A- 1
- B- Unlimited
- C- 10
- D- 999

Answer:

A

To Get Premium Files for AD01 Visit

<https://www.p2pexams.com/products/ad01>

For More Free Questions Visit

<https://www.p2pexams.com/blue-prism/pdf/ad01>

