



**Free Questions for AD01 by go4braindumps**

**Shared by Weaver on 29-01-2024**

**For More Free Questions and Preparation Resources**

**Check the Links on Last Page**

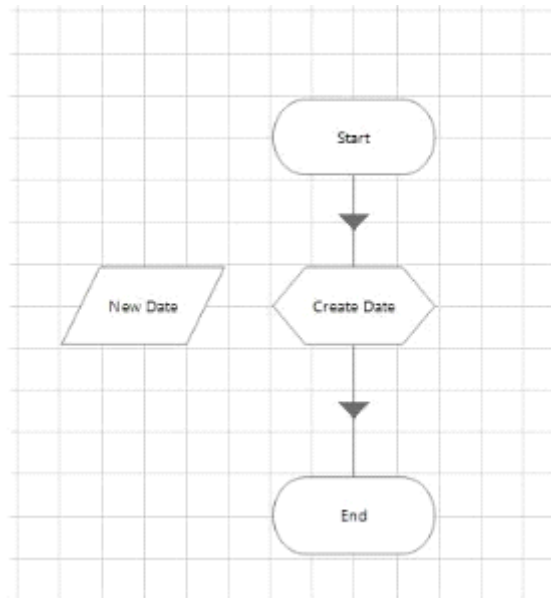
# Question 1

---

**Question Type:** MultipleChoice

---

A process contains only 4 stages. Study the following process flow.



The data item New Date is a date data item with no initial value.

The calculation stage is configured as follows:

Calculation Properties

Name: Create Date

Description:

Expression

```
DateAdd(5, 1, Today())
```

Validate Evaluate Expression Store Result In  New Date

What will happen when you execute the Create Date stage?

**Options:**

---

- A- 5 days will be added to today's date and the result stored in the New Date data item.
- B- 1 month will be added to today's date and the result stored in the New Date data item.
- C- 1 week will be added to today's date and the result stored in the New Date data item.
- D- The process will throw an exception as the New Date data item is null.

**Answer:**

---

B

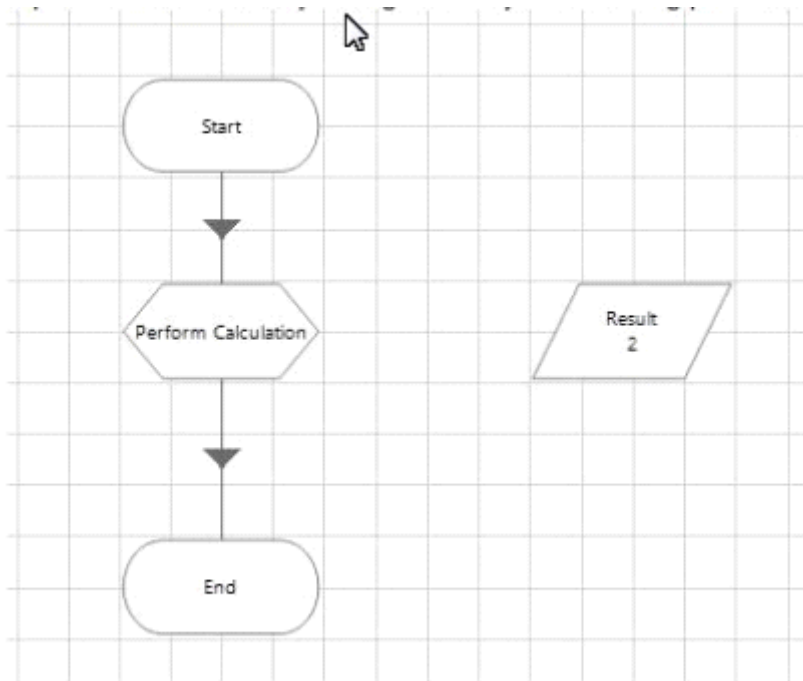
## Question 2

---

**Question Type:** MultipleChoice

---

A process contains only 4 stages Study the following process flow:



The data Item 'Result' is a number data item with an initial value of 2.

The calculation stage is configured as follows:

Calculation Properties

Name: Perform Calculation

Description:

Expression

1 + 2

Validate Evaluate Expression Store Result In  Result

Following the execution of the Perform Calculation stage, which of the following is true?

**Options:**

---

- A- The data item Result will contain 3
- B- The data item Result will contain 5

- C- The process will throw an exception
- D- None of these statements are correct

**Answer:**

---

A

## Question 3

---

**Question Type: MultipleChoice**

---

In which of these scenarios is it ok not to use a Blue Prism work queue as part of your Blue Prism solution?

**Options:**

---

- A- A Blue Prism work queue is not required for simple linear processes that do not work multiple cases.
- B- A Blue Prism work queue should always be used. It eliminates the risk of contention and allows you to gracefully pause the queue at any time.
- C- A Blue Prism work queue is not required if the business process interfaces with a Work List system with in-built capability to ensure multiple users cannot work the same case at the same time
- D- A Blue Prism Work Queue decreases the scalability of the solution and therefore should only be used for complex scenarios such as

multi-day processing.

**Answer:**

---

B

## Question 4

---

**Question Type: MultipleChoice**

---

Which of the following can you perform in Control Room? (select all that apply)

**Options:**

---

**A-** Refresh a Work Queue

**B-** Create a Work Queue

**C-** Encrypt a Work Queue

**D-** Rename a Work Queue

**Answer:**

---

B

## Question 5

---

**Question Type:** MultipleChoice

---

The Work Queue 'Account Closure' has a number of Pending Items which may be tagged as "Current", "Saving" or "Loan". What is the correct configuration to get the next item from the queue that is tagged either "Current" or "Loan"?

### Options:

---

- A- Configure 'Current or Loan' in the Tag Filter parameter
- B- Configure '-Saving' in the Tag Filter parameter
- C- Configure 'Current; Loan:' in the Tag Filter parameter
- D- Configure 'Current + Loan' in the Tag Filter parameter

### Answer:

---

A



## Question 6

---

**Question Type:** MultipleChoice

---

Which of the following statements regarding the use of Work Queues are correct? (select 2 responses)

### Options:

---

- A- Control Room allows filtering of the displayed queue items using exact tags and by using wildcards
- B- Wildcards are not allowed in the Tag Fitter property of the Work Queues business object Get Next Item action
- C- Work Queue item Status can only be set to Completed or Exception
- D- Tags can be used allow flexibility in the order items are worked within a single Work Queue

### Answer:

---

A, C

## Question 7

---

**Question Type:** MultipleChoice

---

Which of the following statements regarding the use of Worker Queues are correct? (select 2 responses)

**Options:**

---

- A- Control Room allows filtering of the displayed queue items using exact tags and by using wildcards
- B- Wildcards are not allowed in the Tag Fitter property of the Work Queues business object Get Next Item action
- C- Work Queue item Status can only be set to Completed or Exception
- D- Tags can be used allow flexibility in the order items are worked within a single Work Queue

**Answer:**

---

A, C

## Question 8

---

**Question Type: MultipleChoice**

---

Which of the following indicates a case in a Work Queue is waiting to be worked?

A)



B)



C)



D)



### Options:

---

**A-** Option A

**B-** Option B

**C-** Option C

**D-** Option D

### Answer:

---

D

## Question 9

---

**Question Type:** MultipleChoice

---

The Work Queue 'Customer Onboarding' has a number of Pending Items which may be tagged as "Domestic", "Retail" or "Business"  
There is also a tag for the 8 digit product code formatted as "Product Code: {product code}" e.g. Product Code: CA123456.

What is the correct configuration to get the next item from the queue that:

\* Isn't applying for a loan product i.e. Product Code doesn't begin with "LN"

And

\* Is a domestic customer

### Options:

---

- A-** Configure 'Domestic; -Product Code: I\_N' in the Tag Filter parameter
- B-** Configure 'Domestic; -Product Code: LN?' in the Tag Filter parameter
- C-** Configure 'Domestic and Product Code <> LN?' in the Tag Filter parameter

**D-** Configure 'Domestic + [Product Code] <> LN\*"' in the Tag Filter parameter

**Answer:**

---

B

## Question 10

---

**Question Type: MultipleChoice**

---

According to Blue Prism best practice which of the following information would be appropriate to store in a Work Queue tag? (select 3 responses)

**Options:**

---

**A-** Something that identifies the type of work that was performed Example tags might be: Funds Transferred, SIM Card Requested, Account, Closed, Account Suspended, Account Noted

**B-** Something that identifies exact datetime of a step in the process. Example of tags might include Account Closed 20/03/2017 12:12:16, Work Completed 20/03/2017 12:12:16: Request Loaded 20/03/2017 12:12:16

**C-** Something that identifies the source of work. Example of tags might include: Email, Web Form, Excel Adhoc. Database

**D-** Something that identifies the client record to make work queue items easier to search. Example tags might be a phone number, customer reference number or ID, customer full name. For example: +4407994446767, 00023231 A; Mr John A Smith

**E-** Something that identifies the type of process scenario. Example of tags might include: Invalid Product, Unrecognised customer, Goneaway Marker, Invalid Status

**F-** Details of an exception that has occurred. For example: The Login Screen was not found.

**Answer:**

---

A, C, E

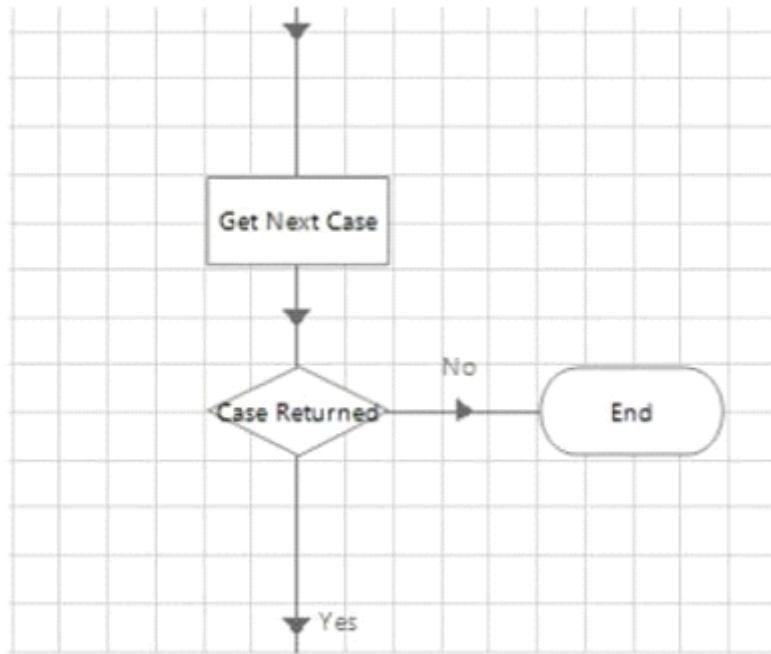
## Question 11

---

**Question Type:** MultipleChoice

---

Study the process flow below:




The outputs for the Get Next Case are configured below:

## Action Properties


Name:

Description:

Business Object:  

Action:

Inputs   Outputs   Conditions

Name	Data Type	Store In
Item ID	Text	Case ID
Data	Collection	Account Details
Status	Text	
Attempts	Number	

What is the correct configuration of the Expression in the "Case Returned " decision stage?

A)

Case ID <> ""

B)



Account Details <> ""

C)

"Case ID" <> ""

D)

[Case ID] <> ""

**Options:**

---

A- Option A

B- Option B

C- Option C

D- Option D

**Answer:**

---

D

## Question 12

---

**Question Type:** MultipleChoice

---

When building a solution to use Tags within a Work Queue, which of the following statements is correct true?

**Options:**

---

- A- Adding a tag requires an item to be locked
- B- Adding a tag requires an item to be locked if there are multiple resources working the same queue
- C- Adding a tag does not require an item to be locked

**Answer:**

---

C

**To Get Premium Files for AD01 Visit**

**<https://www.p2pexams.com/products/ad01>**

**For More Free Questions Visit**

**<https://www.p2pexams.com/blue-prism/pdf/ad01>**

