



Free Questions for 4A0-103 by braindumpscollection

Shared by Jones on 20-10-2022

For More Free Questions and Preparation Resources

Check the Links on Last Page

Question 1

Question Type: MultipleChoice

Click on the exhibit.

```
*A:SRC_R1# show router ldp bindings
```

```
=====
```

```
LDP LSR ID: 10.10.10.1
```

```
=====
```

```
Legend: U - Label In Use, N - Label Not In Use, W - Label Withdrawn  
S - Status Signaled Up, D - Status Signaled Down  
E - Epipe Service, V - VPLS Service, M - Mirror Service  
A - Apipe Service, F - Fpipe Service, I - IES Service, R - VPRN service  
P - Ipipe Service, WP - Label Withdraw Pending, C - Cpipe Service  
BU - Alternate Next-hop for Fast Re-Route, TLV - (Type, Length: Value)
```

```
=====
```

```
LDP Prefix Bindings
```

```
=====
```

Prefix Peer	IngLbl	EgrLbl	EgrIntf/ LspId	EgrNextHop
10.10.10.1/32	131071U	--	--	--
10.10.10.2				
10.10.10.2/32	--	131071	1/1/1	10.1.2.2
10.10.10.2				
192.10.1.2/32	--	131067	--	--
10.10.10.2				

```
=====
```

```
No. of Prefix Bindings: 3
```

```
=====
```

What is the possible reason that the label for prefix 192.10.1.2/32 is not active?

Options:

- A-** The router does not have a route to reach to the peer 10.10.10.2/32.
- B-** The router does not have a route to reach to the prefix 192.10.1.2/32.
- C-** The router does not have an export policy defined to export the prefix 192.10.1.2/32 into LDP.
- D-** The router receives an invalid label for the prefix 192.10.1.2/32 from its peer.

Answer:

B

Question 2

Question Type: MultipleChoice

Which of the following fields does NOT appear in the MPLS label header?

Options:

- A- Label
- B- Frame check sequence
- C- Traffic Class (previously called Experimental)
- D- Time To live
- E- Bottom of stack bit

Answer:

B

Question 3

Question Type: MultipleChoice

Which of the following is NOT an application of MPLS?

Options:

- A- Enabling VPNs
- B- Enabling traffic engineering

- C- Enabling network security
- D- Enhancing network resiliency

Answer:

C

Question 4

Question Type: MultipleChoice

Which of the following regarding label population is TRUE?

Options:

- A- Selected labels from the FIB are populated to the LFIB
- B- Selected labels from the RIB are populated to the FIB
- C- Selected labels from the LIB are populated to the FIB
- D- Selected labels from the LIB are populated to the LFIB

Answer:

D

Question 5

Question Type: MultipleChoice

Which of the following about IS-IS Traffic Engineering on an Alcatel-Lucent 7750 SR is FALSE?

Options:

- A-** Traffic engineering information is carried in the extended TLVs.
- B-** Traffic engineering must be enabled on all IP/MPLS routers along the LSP path.
- C-** Traffic engineering information is stored in the opaque database,
- D-** Traffic engineering is required for constraint-based LSPs.

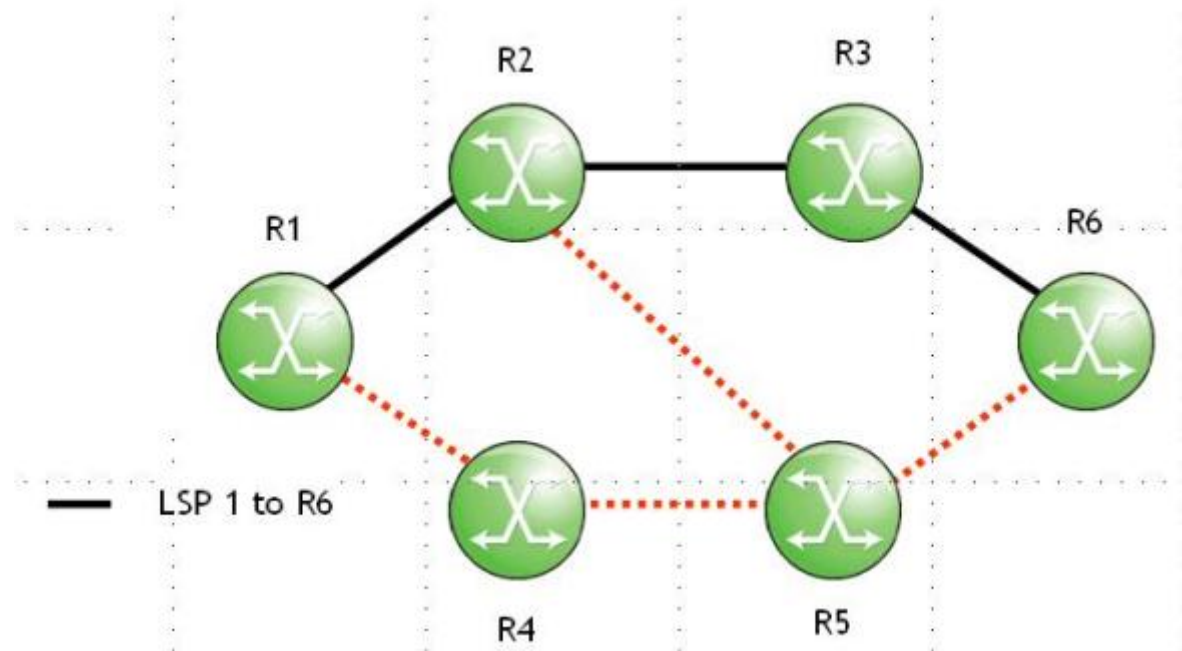
Answer:

C

Question 6

Question Type: MultipleChoice

Click on the exhibit.



LSP 1's link between routers R3 and R6 has failed, and the RESV state at router R3 has timed out. Which of the following actions will router R3 initiate?

Options:

- A-** Send a PathTear message towards router R6.
- B-** Send a PathTear message towards router R1.
- C-** Send a ResvTear message toward router R6.
- D-** Send a ResvTear message toward router R1.

Answer:

D

Question 7

Question Type: MultipleChoice

Which of the following about RSVP-TE is FALSE?

Options:

- A-** It supports traffic protection using IGP equal cost paths.

- B-** It supports CAC to prevent resource overbooking.
- C-** It supports LSPs with traffic engineering constraints.
- D-** It supports LSPs that follow the IGP best path.

Answer:

A

Question 8

Question Type: MultipleChoice

Click on the exhibit.

```
configure router policy-options
begin
prefix-list "officeA_subnet"
    prefix 192.168.1.0/24 longer
exit
policy-statement "LDP_export"
    entry 10
        from
            protocol direct
            prefix-list "officeA_subnet"
        exit
        action accept
    exit
exit
commit
```

This policy is applied on a router as an LDP export policy and an LDP session has been established between this router and its neighboring router. In addition to the FECs learned from its neighbors, what additional FECs will appear in this router's LIB?

Options:

- A-** All FECs that are in the 192.168.1.0/24 address space.
- B-** Local FECs that are in the 192.168.1.0/24 address space.
- C-** All FECs that are not in the 192.168.1.0/24 address space.
- D-** All FECs except the local FECs that are in the 192.168.1.0/24 address space.

Answer:

B

Question 9

Question Type: MultipleChoice

Which of the following about label modes on the Alcatel-Lucent 7750 SR is FALSE?

Options:

- A-** RSVP uses downstream on demand label distribution mode.
- B-** LDP uses conservative label retention mode.
- C-** LDP advertises label mappings to all peers for which it might be a next-hop for a given FEC
- D-** RSVP distributes a label mapping for a FEC when it has been requested to do so.

Answer:

B

Question 10

Question Type: MultipleChoice

Which MPLS mode saves only active label mappings received from peer LSRs?

Options:

- A-** Conservative label retention
- B-** Liberal label retention
- C-** Downstream on demand
- D-** Downstream unsolicited

Answer:

A

Question 11

Question Type: MultipleChoice

Which of the following defines an FEC in traditional IP?

Options:

- A-** A group of packets that will be forwarded by the router in the same manner, over the same path.
- B-** A group of packets that arrive at the router on the same interface,
- C-** A group of packets that leave the router on the same interface.
- D-** A group of packets that arrive at the router on the same interface, from the same source.

Answer:

A

Question 12

Question Type: MultipleChoice

Which of the following devices inspects the MPLS header in the received packet, and exchanges it for a new MPLS header?

Options:

A- iLER

B- LER

C- LSR

D- PE

E- eLER

Answer:

C

To Get Premium Files for 4A0-103 Visit

<https://www.p2pexams.com/products/4a0-103>

For More Free Questions Visit

<https://www.p2pexams.com/nokia/pdf/4a0-103>

