



Free Questions for 4A0-C04 by [braindumpscollection](#)

Shared by [Gates](#) on 20-10-2022

For More Free Questions and Preparation Resources

[Check the Links on Last Page](#)

Question 1

Question Type: MultipleChoice

From what range are 16-bit private AS numbers selected?

Options:

- A- 64496 -- 64511
- B- 1 -- 56319
- C- 64512-65534
- D- 64513-65535
- E- There are no defined private AS numbers; there are only private IP addresses.

Answer:

C

Question 2

Question Type: MultipleChoice

Which of the following statements about the BGP Advertise External feature is FALSE?

Options:

- A- It modifies the BGP advertisement logic.
- B- It improves convergence times and allows for better load sharing.
- C- It allows a router to advertise multiple external paths for a single prefix.
- D- It supports both IPv4 and IPv6.

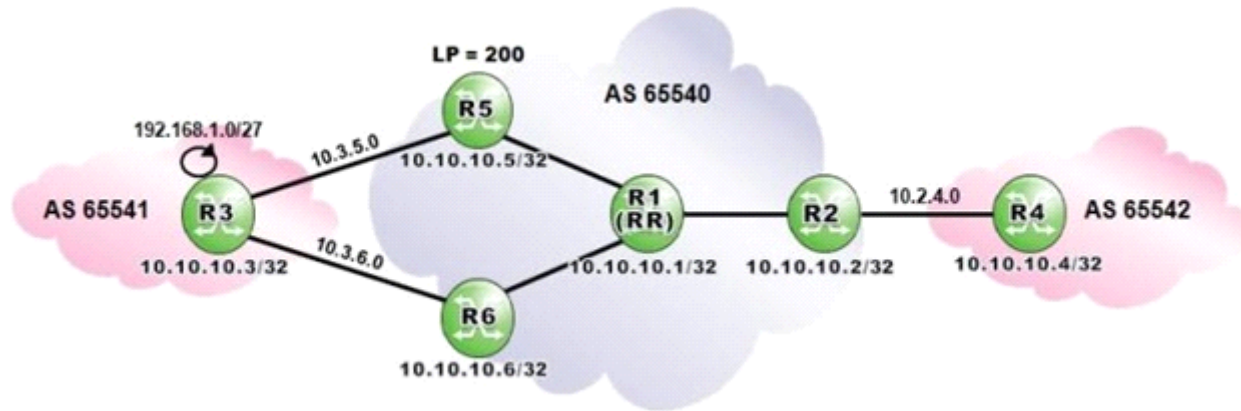
Answer:

C

Question 3

Question Type: MultipleChoice

Click the exhibit.



Router R1 is a route reflector with clients R2, R5 and R6. Prefixes advertised by router R5 have a local preference of 200. Router R3 advertises the prefix 192.168.1.0/27 to routers R5 and R6.

Assuming that router R6 is configured with "advertise-external", what is the expected output of "show router bgp routes" when executed on router R1?

| A. Flag Network | | LocalPref | MED |
|-----------------|----------------|-----------|----------|
| Nexthop | As-Path | Path-Id | VPNLabel |
| ----- | | | |
| u*>i | 192.168.1.0/27 | 200 | None |
| | 10.10.10.5 | None | - |
| | 65541 | | |
| i | 192.168.1.0/27 | None | None |
| | 10.10.10.6 | None | - |
| | 65541 | | |

| B. Flag Network | | LocalPref | MED |
|-----------------|----------------|-----------|----------|
| Nexthop | As-Path | Path-Id | VPNLabel |
| ----- | | | |
| u*>i | 192.168.1.0/27 | 200 | None |
| | 10.3.5.3 | None | - |
| | 65541 | | |
| i | 192.168.1.0/27 | 200 | None |
| | 10.10.10.5 | None | - |
| | 65541 | | |
| i | 192.168.1.0/27 | 100 | None |
| | 10.10.10.6 | None | - |
| | 65541 | | |

| C. Flag Network | | LocalPref | MED |
|-----------------|----------------|-----------|----------|
| Nexthop | As-Path | Path-Id | VPNLabel |
| ----- | | | |
| u*>i | 192.168.1.0/27 | None | None |
| | 10.10.10.6 | None | - |
| | 65541 | | |
| i | 192.168.1.0/27 | 200 | None |
| | 10.10.10.5 | None | - |
| | 65541 | | |

| D. Flag Network | | LocalPref | MED |
|-----------------|----------------|-----------|----------|
| Nexthop | As-Path | Path-Id | VPNLabel |
| ----- | | | |
| u*>i | 192.168.1.0/27 | 200 | None |
| | 10.10.10.5 | None | - |
| | 65541 | | |

Options:

A- Option A

B- Option B

C- Option C

D- Option D

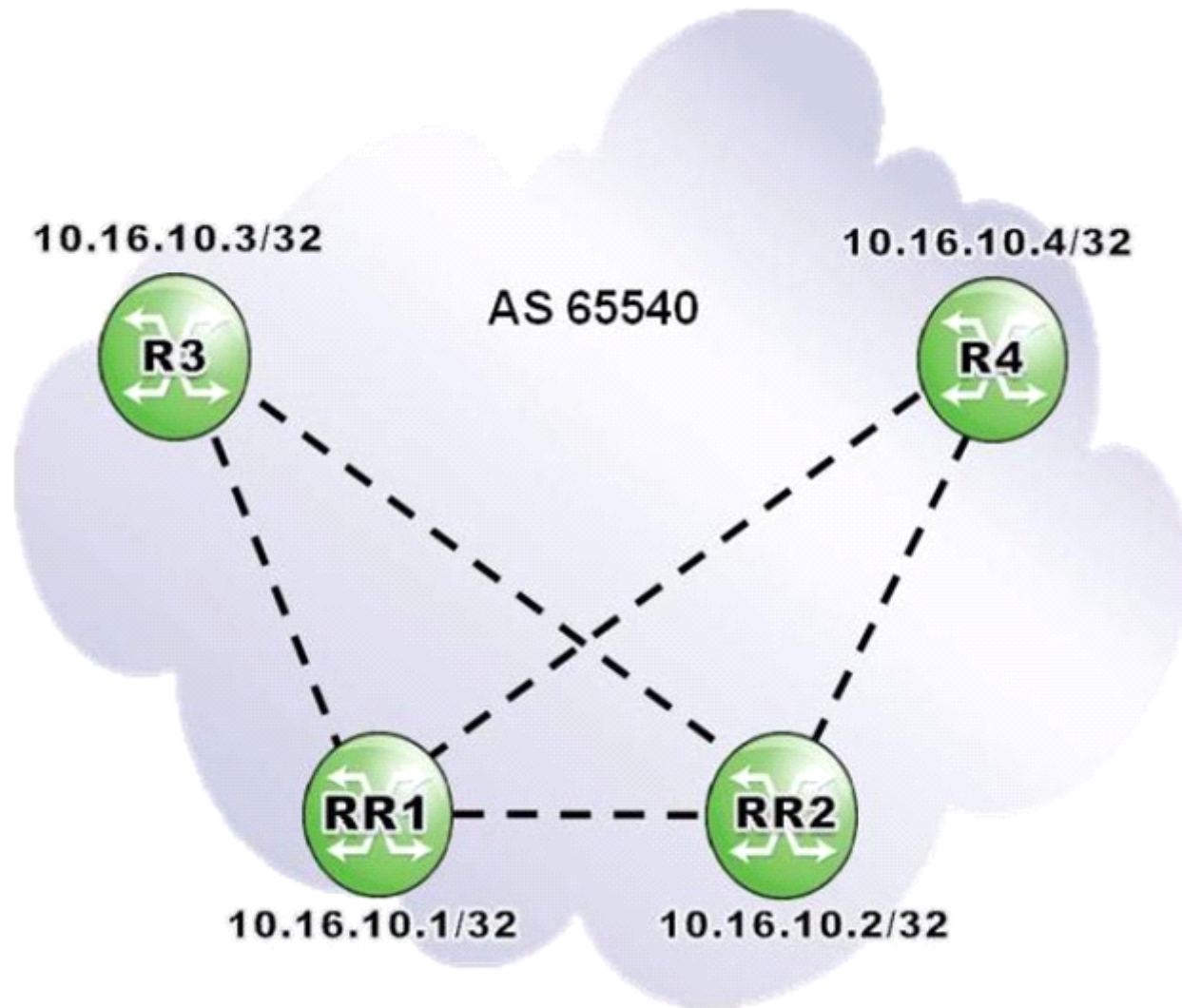
Answer:

D

Question 4

Question Type: MultipleChoice

Click the exhibit.



Routers RR1 and RR2 are redundant route reflectors for clients R3 and R4. Which of the following is a valid configuration on router RR1?

○ A. RR1>config>router>bgp# info

```
-----  
group "AS 65540 iBGP"  
  cluster 10.16.10.1  
  peer-as 65540  
  neighbor 10.16.10.2  
  exit  
  neighbor 10.16.10.3  
  exit  
  neighbor 10.16.10.4  
  exit
```

○ C. RR1>config>router>bgp# info

```
-----  
group "AS 65540 iBGP"  
  peer-as 65540  
  neighbor 10.16.10.2  
  exit  
  neighbor 10.16.10.3  
    cluster 10.16.10.1  
  exit  
  neighbor 10.16.10.4  
    cluster 10.16.10.1  
  exit
```

○ B. RR1>config>router>bgp# info

```
-----  
group "AS 65540 iBGP"  
  peer-as 65540  
  neighbor 10.16.10.2  
    cluster 10.16.10.2  
  exit  
  neighbor 10.16.10.3  
    cluster 10.16.10.1  
  exit  
  neighbor 10.16.10.4  
    cluster 10.16.10.1  
  exit  
  exit
```

○ D. RR1>config>router>bgp# info

```
-----  
group "AS 65540 iBGP"  
  peer-as 65540  
  neighbor 10.16.10.3  
    cluster 10.16.10.1  
  exit  
  neighbor 10.16.10.4  
    cluster 10.16.10.1  
  exit  
  exit
```


Options:

A- Option A

B- Option B

C- Option C

D- Option D

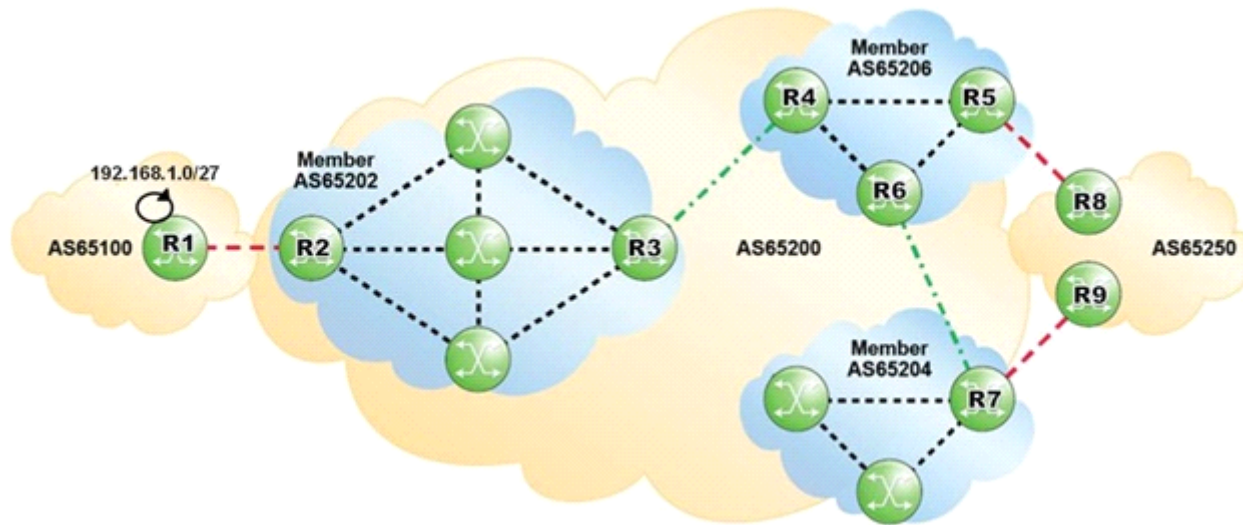
Answer:

C

Question 5

Question Type: MultipleChoice

Click the exhibit.



AS 65100 is advertising 192.168.1.0/27 into BGP. Which of the following AS Paths would the prefix 192.168.1.0/27 contain when viewed on router R7?

Options:

- A- 65206 65202 65100
- B- (65206 65202)65100
- C- (65204 65206 65202) 65100
- D- (65200) 65100

Answer:

B

Question 6

Question Type: MultipleChoice

Which of the following is considered a best practice for BGP address planning?

Options:

- A- Advertising external networks into IGP.
- B- Using system addresses for setting up iBGP sessions.
- C- Exporting the networks associated with the external links of eBGP peers into BGP.
- D- Optimizing BGP route table by exporting IGP routes into BGP.

Answer:

B

To Get Premium Files for 4A0-C04 Visit

<https://www.p2pexams.com/products/4a0-c04>

For More Free Questions Visit

<https://www.p2pexams.com/nokia/pdf/4a0-c04>

