



**Free Questions for JN0-682 by [braindumpscollection](#)**

**Shared by [Peters](#) on [06-06-2022](#)**

**For More Free Questions and Preparation Resources**

**[Check the Links on Last Page](#)**

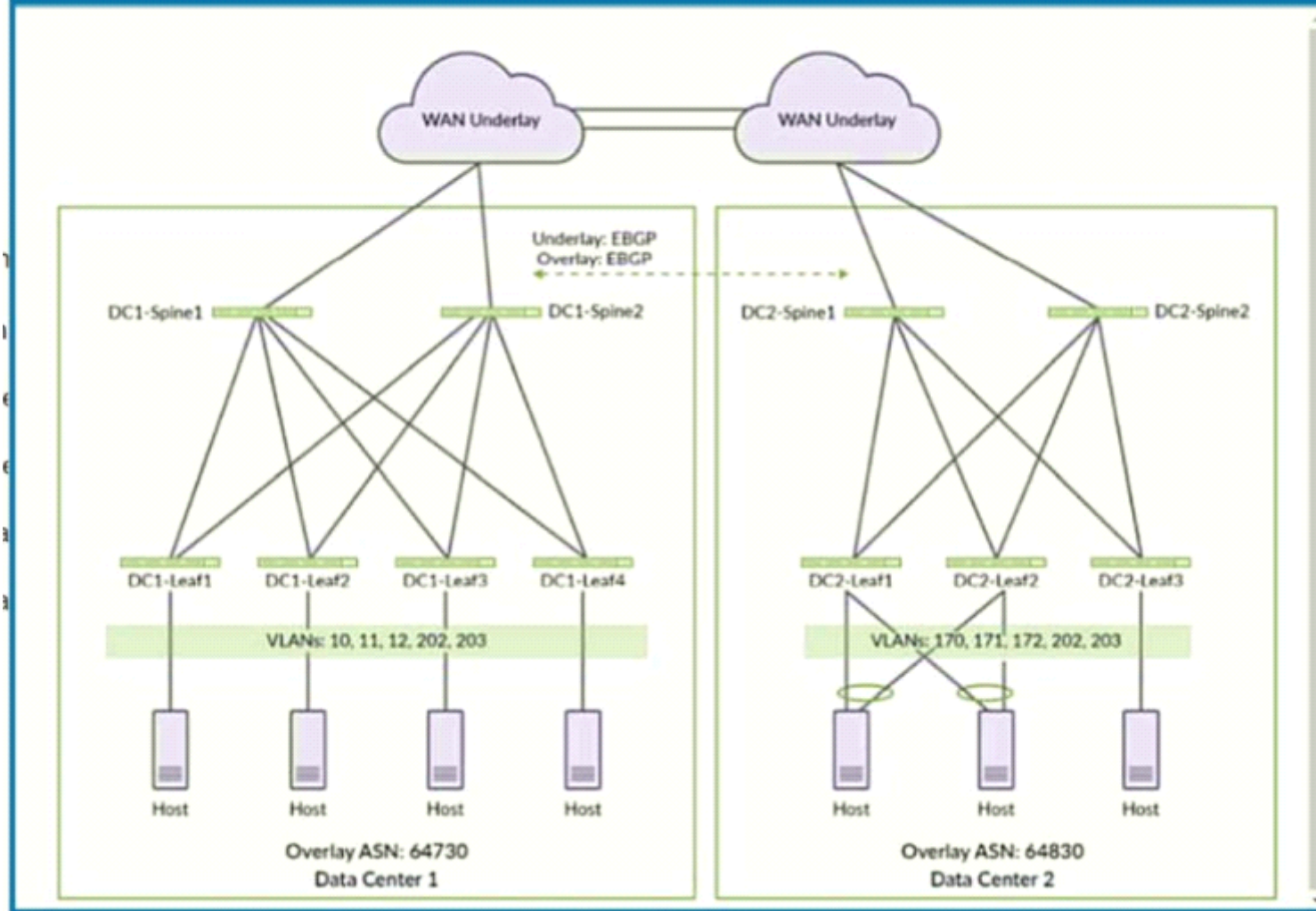
# Question 1

---

**Question Type:** MultipleChoice

---

Exhibit.



The two data centers shown in the exhibit need to be connected using EVPN.

Which two statements are correct in this situation? (Choose two.)

**Options:**

---

- A-** Hosts in VLAN 10 can communicate with hosts in Data Center 2 using Layer 3.
- B-** Hosts in VLAN 10 can communicate with hosts in Data Center 2 using Layer 2.
- C-** Hosts in VLAN 202 can communicate using Layer 3 between data centers.
- D-** Hosts in VLAN 202 can communicate using Layer 2 between data centers.

**Answer:**

---

A, D

## Question 2

---

**Question Type:** MultipleChoice

---

You are asked to deploy an Ethernet bridging design in a data center with the criteria shown below.

- Routing must occur on the spine devices.
- VTEPs must terminate on the leaf devices.

- Facilitate inter-VLAN communication.
- Layer 2 gateways must be present on spine and leaf devices.

Which architecture should you use in this scenario?

**Options:**

---

- A-** edge-routed bridging architecture
- B-** centrally-routed bridging architecture
- C-** bridge overlay architecture
- D-** collapsed spine architecture

**Answer:**

---

B

## Question 3

---

**Question Type:** MultipleChoice

---

Exhibit.

```
{master:0}
user@leaf1> show mac-vrf forwarding interface vtep.32769
Routing Instance Name : mac-vfr310410-vlan-aware
Logical Interface flags (DL - disable learning, AD - packet action drop,
                        LH - MAC limit hit, DN - interface down,
                        MMAS - Mac-move action shutdown, AS - Autostate-exclude enabled,
                        SCTL - shutdown by Storm-control, MI - MAC+IP limit hit)

Logical      Vlan      TAG  MAC  MAC+IP  STP      Logical      Tagging
interface    members
vtep.32769
             v410      410  0    0        Forwarding  tagged
             v310      310  0    0        Forwarding  tagged
```

Referring to the exhibit, which statement is correct?

**Options:**

---

- A- Leaf1 has not learned any MAC addresses
- B- Leaf3 is the remote tunnel endpoint.
- C- One tunnel is servicing multiple VLANs
- D- Spanning Tree Protocol is disabled

**Answer:**

---

C

## Question 4

---

**Question Type:** MultipleChoice

---

Exhibit.

```
{master:0}[edit switch-options]
user@switch# run show route table default-switch.evpn.0

default-switch.evpn.0: 3 destinations, 3 routes (3 active, 0 holddown, 0 hidden)
+ = Active Route, - = Last Active, * = Both

3:172.16.100.15:1::1000::172.16.100.15/304 IM
      *[EVPN/170] 00:13:36
      Indirect
...
```

Which statement is true about the route shown in the exhibit?

**Options:**

---



- A- The route target on this route is 1000
- B- The route is an EVPN type-1 route.
- C- The route uses a type-1 route distinguisher.
- D- The VNI for this route is 304.

**Answer:**

---

D

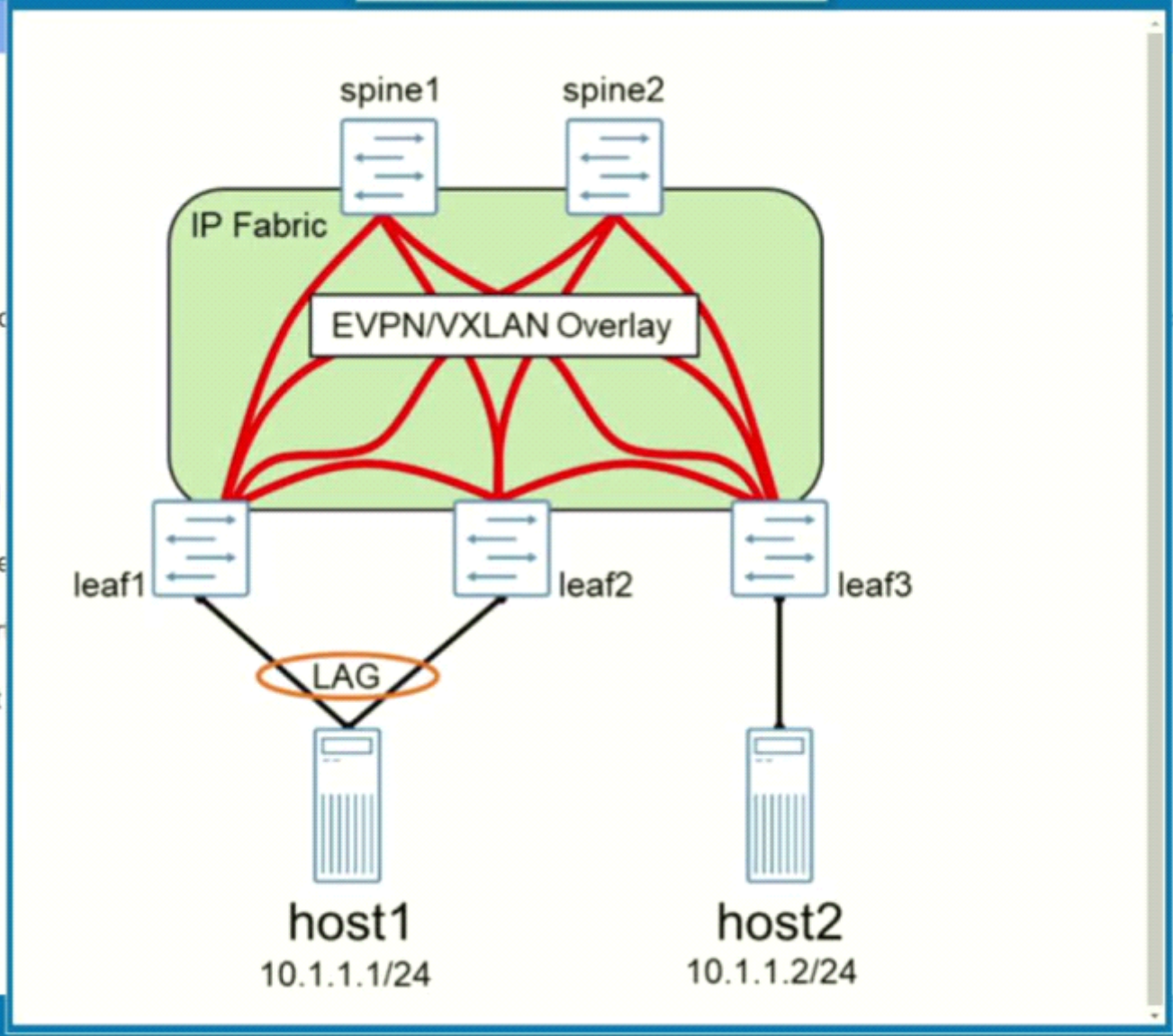
## Question 5

---

**Question Type:** MultipleChoice

---

Exhibit.



An EVPN-signaled VXLAN overlay has been deployed in the network shown in the exhibit. An EVPN LAG has been configured to connect host1 to the network, and device leaf1 has been elected as the designated forwarder.

**Options:**

---

- A- In this scenario, which statement is true?
- A- The leaf3 device can utilize both leaf1 and leaf2 to forward unicast packets from host2 to host1.
- B- An ICCP control link must be configured between leaf1 and leaf2.
- C- The leaf3 device will only receive an advertisement to the LAG segment from leaf1.
- D- Broadcast packets sent from host2 will not be forwarded to leaf2.

**Answer:**

---

C

**To Get Premium Files for JN0-682 Visit**

**<https://www.p2pexams.com/products/jn0-682>**

**For More Free Questions Visit**

**<https://www.p2pexams.com/juniper/pdf/jn0-682>**

