



**Free Questions for 4A0-100 by certscare**

**Shared by Bryant on 06-06-2022**

**For More Free Questions and Preparation Resources**

**Check the Links on Last Page**

## Question 1

---

**Question Type:** MultipleChoice

---

From the CE perspective, how does a VPWS operate?

### Options:

---

- A- Two sites are directly connected by a single cable.
- B- Two sites are connected through a single switched LAN.
- C- Two sites are connected through a public routed network.
- D- Two sites are connected through a private routed network.

### Answer:

---

A

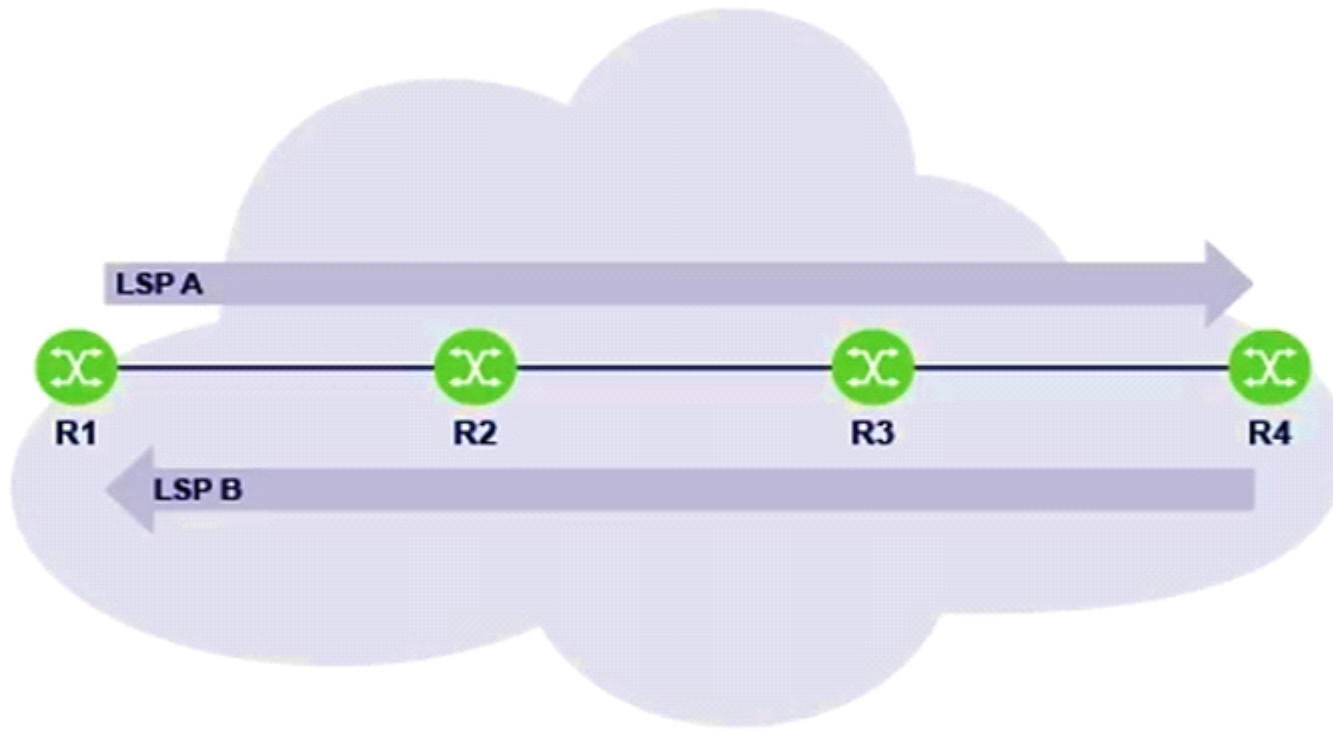
## Question 2

---

**Question Type:** MultipleChoice

---

Which of the MPLS routers is responsible for pushing new labels for LSP A and LSP B?



**Options:**

---

**A-** Router R1 pushes labels for both LSP A and LSP B.

**B-** Router R4 pushes labels for both LSP A and LSP B.

**C-** Router R1 pushes labels for LSP A, while router R4 pushes labels for LSP B.

**D-** Router R4 pushes labels for LSP A, while router R1 pushes labels for LSP B.

**Answer:**

---

C

## Question 3

---

**Question Type: MultipleChoice**

---

Which device is responsible for removing the MPLS label before the packet reaches the customer?

**Options:**

---

**A-** The ingress LER

**B-** The CE device

**C-** The P router

**D-** The egress LER

Answer:

---

D

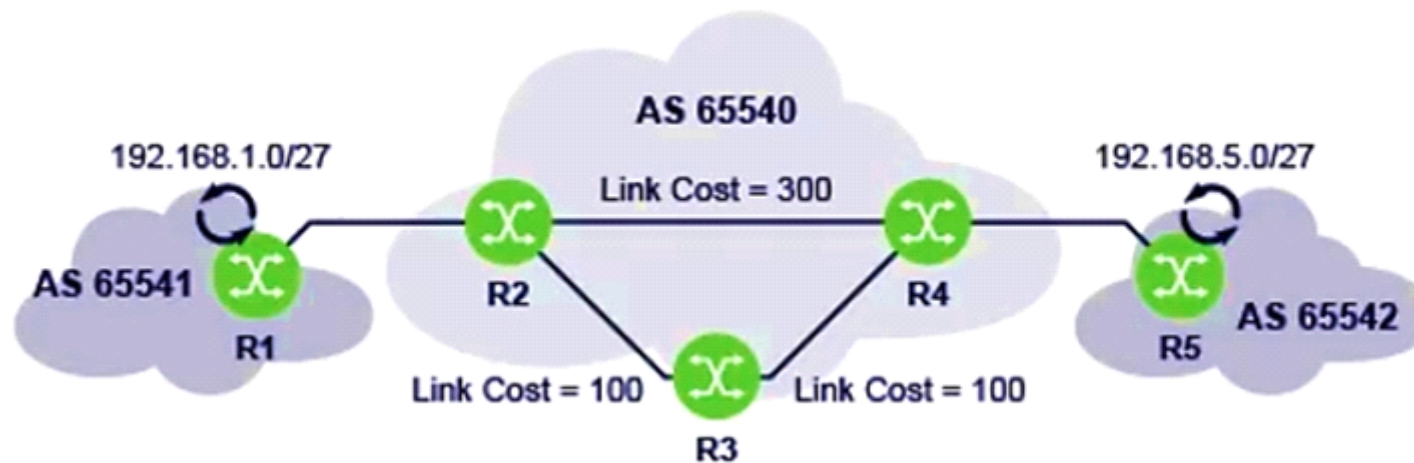
## Question 4

---

Question Type: MultipleChoice

---

Which of the following routing protocols provides routing between routers R1 and R2?



Options:

---

- A- BGP
- B- RIPv2
- C- OSPF
- D- IS-IS

**Answer:**

---

A

## Question 5

---

**Question Type:** MultipleChoice

---

Which of the following statements about IP filters on a Nokia 7750 SR is TRUE?

**Options:**

---

- A- Multiple ingress IP filters can be used on a single interface.
- B- An IP filter can be applied to the management port.
- C- The same IP filter can be used on multiple interfaces.

**D-** Only one IP filter can be defined per router.

**Answer:**

---

C

## Question 6

---

**Question Type:** MultipleChoice

---

What type of MAC address is ff:ff:ff:ff:ff:ff?

**Options:**

---

**A-** Unicast

**B-** Multicast

**C-** Broadcast

**D-** Anycast

**Answer:**

---

C

## Question 7

---

**Question Type:** MultipleChoice

---

If a 5-port LAG is configured with the option of 'port-threshold 2 action down', and dynamic-cost is enabled, what will happen if the total number of operational links in the LAG is 2?

### Options:

---

- A- The LAG cost is equal to the link cost divided by 3.
- B- The LAG cost is equal to the link cost.
- C- The LAG is operationally down.
- D- The LAG cost is equal to the link cost divided by 5.

### Answer:

---

C



## Question 8

---

**Question Type:** MultipleChoice

---

A switch with the MAC FDB shown receives an Ethernet frame with source MAC address 00:00:8c:01:00:0a and destination MAC address 00:00:8c:01:00:0c. On which port is the frame forwarded?

### MAC FDB

1/1/1	00:00:8c:01:00:0a
1/1/2	00:00:8c:01:00:0b
1/1/3	00:00:8c:01:00:0c
1/1/4	00:00:8c:01:00:0d

### Options:

---

- A- 1/1/1
- B- 1/1/2
- C- 1/1/3
- D- 1/1/4

**Answer:**

---

C

## Question 9

---

**Question Type:** MultipleChoice

---

What happens when a switch receives an Ethernet frame with unknown source and destination MAC addresses?

**Options:**

---

- A-** The frame is silently discarded.
- B-** The source MAC address is saved in the MAC FDB, and the frame is discarded.
- C-** The source MAC address is saved in the MAC FDB, and the frame is flooded to all ports except the receiving port.
- D-** The source and destination MAC addresses are saved in the MAC FDB, and the frame is flooded to all ports.

**Answer:**

---

C

## Question 10

---

**Question Type:** MultipleChoice

---

Which of the following is NOT a valid log source in a Nokia 7750 SR?

**Options:**

---

A- Main

B- Security

C- Syslog

D- Debug

**Answer:**

---

C

# Question 11

---

**Question Type:** MultipleChoice

---

Which of the following is NOT a function of the control plane?

**Options:**

---

- A- Building routing tables using dynamic routing protocols.
- B- Building forwarding tables for the IOMs.
- C- Handling router configuration and management functions.
- D- Processing and forwarding user application traffic.

**Answer:**

---

D

**To Get Premium Files for 4A0-100 Visit**

**<https://www.p2pexams.com/products/4a0-100>**

**For More Free Questions Visit**

**<https://www.p2pexams.com/nokia/pdf/4a0-100>**

