



**Free Questions for NS0-194 by certscare**

**Shared by Paul on 06-06-2022**

**For More Free Questions and Preparation Resources**

**Check the Links on Last Page**

## Question 1

---

**Question Type:** MultipleChoice

---

What are two supported cabling methods for a NetApp HCI compute node? (Choose two.)

### Options:

---

- A- 1-cable configuration
- B- 2-cable configuration
- C- 6-cable configuration
- D- 4-cable configuration

### Answer:

---

B, C

## Question 2

---

**Question Type:** MultipleChoice

---

A user can read and write some files on an NFS volume, but the user is unable to read all of the files in the volume.

In this scenario, which command will help you troubleshoot this problem?

**Options:**

---

A- security login create

B- security audit show

C- vserver security trace filter create

D- vserver export-policy check-access

**Answer:**

---

C

## Question 3

---

**Question Type: MultipleChoice**

---

The details from within Active IQ Cluster Viewer are downloadable in which three file formats? (Choose three.)

**Options:**

---

- A- PDF
- B- CSV
- C- XLS
- D- DOC
- E- HTML

**Answer:**

---

A, B, C

## Question 4

---

**Question Type: MultipleChoice**

---

For testing purposes, your customer decides to use FC on a single-node ONTAP cluster. There is only one host that the customer expects to use. High availability is not a concern for this test. The customer connects the host directly to the ONTAP node. The LUN is set up, and the igroup is configured. When the customer tries to attach to the LUN from the host, the LUN is not seen by the host.

Which statement is correct in this scenario?

### Options:

---

- A- Multipathing must be used and connected to another FC path.
- B- NPV must be enabled on the host before trying to attach to the LUN.
- C- NPIV must be enabled on the host before trying to attach to the LUN.
- D- An FC switch must be used with ONTAP.

### Answer:

---

B

## Question 5

---

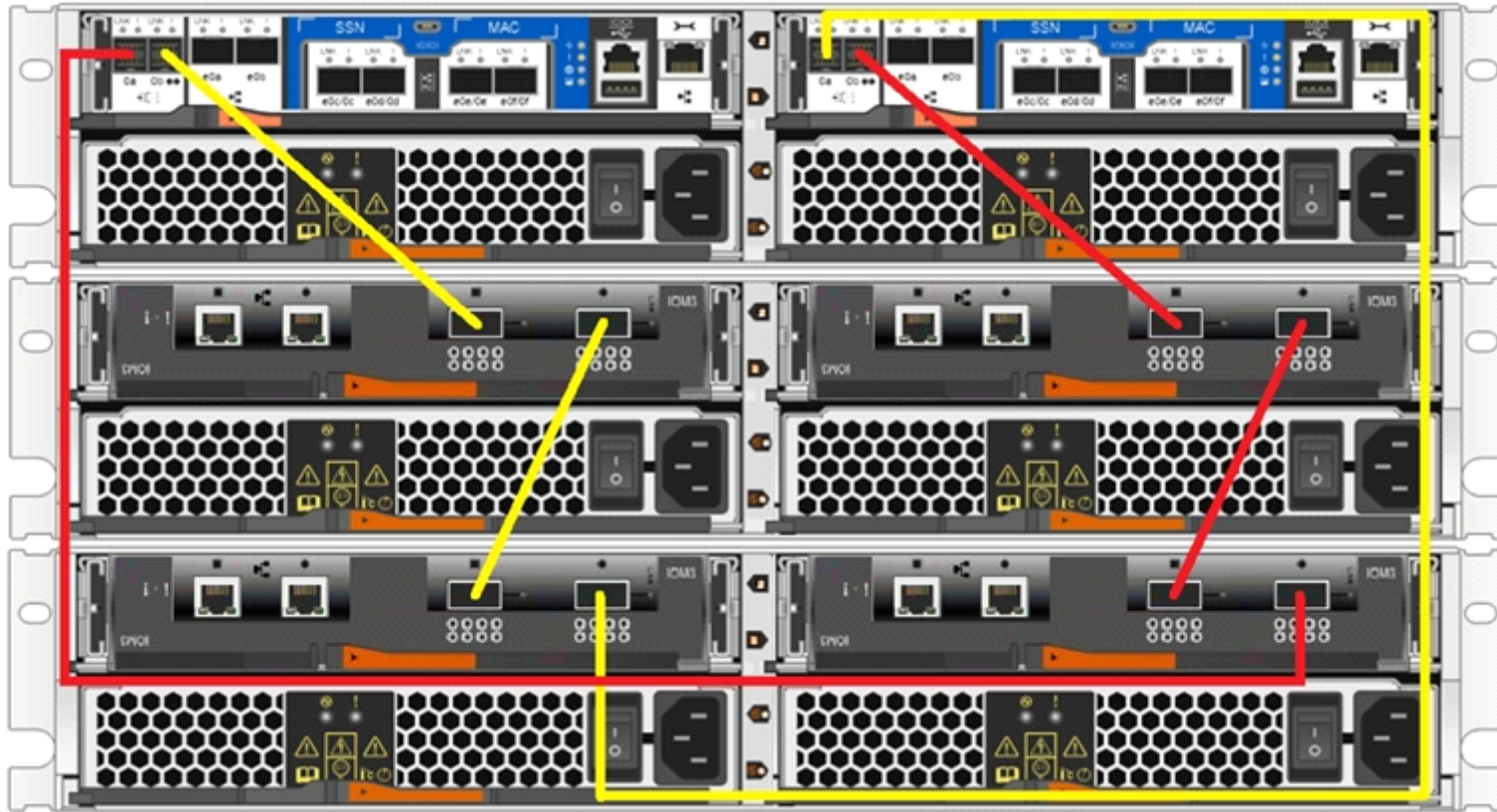
### Question Type: MultipleChoice

---

You receive the error shown below on a FAS2750 HA pair.

```
Mon Jun 24 00:27:30 UTC [NetappA: scsi_cmdblk_strthr_admin: scsi.cmd.checkCondition:error]: Unknown device 0a.00.99: Check Condition: CDB 0x12: Sense Data SCSI:hardware error - (0x4 - 0x44 0x0 0x0) (0).
```

The system is cabled as shown in the exhibit.



What should you do to clear the error?

**Options:**

---

- A-** Replace the cable connected to controller A's 0a port.
- B-** Replace the controller of controller B.

- C- Replace the controller of controller A.
- D- Re-cable the system per the FAS2750 installation guide.

**Answer:**

---

C

## Question 6

---

**Question Type: MultipleChoice**

---

In ONTAP 9.5, the event log show command queries and displays entries from which file?

**Options:**

---

- A- messages.log
- B- ems.log
- C- bcomd.log
- D- mgwd.log

**Answer:**

---

B

## Question 7

---

**Question Type: MultipleChoice**

---

A customer must store physical hard copies of transaction data off site to meet regulatory requirements.

Which NetApp technology enables the customer to accomplish this task?

**Options:**

---

**A-** SnapVault

**B-** NDMP

**C-** SVM DR

**D-** FlexCache

**Answer:**

---

A



## Question 8

---

**Question Type:** MultipleChoice

---

You are using FCP and iSCSI protocols from your clients with ONTAP as the target. You want to ensure that storage failover (SFO) works correctly for your clients.

In this scenario, which two features on the initiator and the target will accomplish this task? (Choose two.)

### Options:

---

A- LACP

B- MPIO

C- ALUA

D- SCSI

### Answer:

---

B, C

## Question 9

---

### Question Type: MultipleChoice

---

A customer is showing disk utilization is at 100% in Active IQ even though there are low protocol operations on the controller. You review the data shown in the exhibit.

```
disk          ut%   xfers  ureads--chain-usecs  writes--chain-usecs
/aggr0/plex0/rg0:
6b.34         1     2.18   0.17   1.00 10700   0.98  13.49   490
6a.19         1     2.35   0.17   1.00 36600   1.15  11.83   504
6a.45        13    17.98  16.88   2.13  5810    0.53   8.81   887
6b.18        13    17.57  16.55   2.17  5357    0.42  11.00  1189
6a.29        12    16.70  15.30   2.15  5820    0.60   6.75  1996
6b.25        13    18.31  17.13   2.17  5611    0.48   7.59  1709
6b.39        100   15.44  15.07   2.22 191927   0.00   ....   .
6a.17        12    16.75  15.52   2.10  6126    0.50   8.63  1475
6b.38        12    16.98  15.95   2.09  5614    0.43   9.92  1349
```

In this situation, what should you do?

### Options:

---

**A-** Replace disks 6b.34 and 6a.19.

**B-** Add disks to the aggregate to bring down the average utilization.

**C-** Replace disk 6b.39.

**D-** Reseat shelf module B.

**Answer:**

---

C

## Question 10

---

**Question Type:** MultipleChoice

---

You perform a security trace when troubleshooting a data access problem for a user. The results are shown in the exhibit.

```
cluster1::> vserver security trace trace-result show -vserver svml
```

```
Vserver: svml
```

Node	Index	Filter Details	Reason
cluster1-01	1	Security Style: NTFS and NT ACL	Access is denied. The requested permissions are not granted by the ACE while opening existing file or directory. Access is not granted for: "Read Attributes"
		Protocol: cifs Volume: - Share: dept Path: /list.xlsx Win-User: LAB\domusr1 UNIX-User: pcuser Session-ID: 14249952170953675090	

What should you do to solve this issue?

### Options:

---

- A- Grant the user Read Attributes access to the path.
- B- Add the user to the BUILTIN\power Users group.
- C- Add the user to the BUILTIN\Users group.
- D- Grant the user Execute access to the path.

**Answer:**

---

A

**To Get Premium Files for NS0-194 Visit**

**<https://www.p2pexams.com/products/ns0-194>**

**For More Free Questions Visit**

**<https://www.p2pexams.com/netapp/pdf/ns0-194>**

