



**Free Questions for 4A0-106 by certsdeals**

**Shared by Compton on 29-01-2024**

**For More Free Questions and Preparation Resources**

**Check the Links on Last Page**

## Question 1

---

**Question Type:** MultipleChoice

---

Which of the following about the configuration of BGP Site of Origin (SoO) is TRUE?

### Options:

---

- A-** Each PE must implement a policy to apply a unique SoO attribute to the set of routes received from each customer site.
- B-** A different BGP extended community is used on each PE that connects to a single site.
- C-** An import policy on the PE rejects a route if the attached SoO matches the configured value.
- D-** Import and export policies are applied on the PEs under the global BGP context.

### Answer:

---

A

## Question 2

---

**Question Type:** MultipleChoice

---

Click the exhibit.

```
A:CE-1# show router bgp routes
=====
BGP Router ID : 10.10.10.76      AS : 65200   Local AS : 65200
=====
Legend -
Status codes : u - used, s - suppressed, h - history, d - decayed, * - valid
Origin codes : i - IGP, e - EGP, ? - incomplete, > - best
=====
BGP Routes
=====
Flag  Network                Nexthop          LocalPref  MED
      VPN Label           As-Path
-----
u*>?  10.1.2.0/24            10.16.1.1       none       none
      65100 65100
u*>?  10.10.10.78/32        10.16.1.1       none       none
      65100 65100
u*>i  10.32.1.0/24          10.16.1.1       none       none
      65100
```

Assuming that the as-override command is used, what is the most likely location of prefix 10.1.2.0/24?

**Options:**

---

**A-** The prefix is located in an Autonomous System directly connected to this router.

- B-** There is a single Autonomous System between the local AS and the AS that originated the prefix.
- C-** There are two Autonomous Systems between the local AS and the AS that originated the prefix.
- D-** The prefix is located in Autonomous System 65100.

**Answer:**

---

B

## Question 3

---

**Question Type:** MultipleChoice

---

Based on the VPRN BGP decision process, which of the following routes is selected first if the command "PE1>config>service>vprn>bgp best-path-selection as-path-ignore" is executed?

**Options:**

---

- A-** The route learned from an eBGP peer.
- B-** The route with the lowest Origin.
- C-** The route with the lowest originator ID or BGP Identifier.

**D-** The route with the shortest AS path.

**Answer:**

---

B

## Question 4

---

**Question Type: MultipleChoice**

---

In a VPRN that uses MPLS transport tunnels, which of the following is NOT configured on the PE device?

**Options:**

---

- A-** MP-BGP for exchanging customer routes with other PEs.
- B-** A routing protocol for exchanging customer routes with the CE.
- C-** A label signaling protocol for defining transport tunnels between the PE and CE.
- D-** MPLS for exchanging labels with other provider core devices.

**Answer:**

---

C

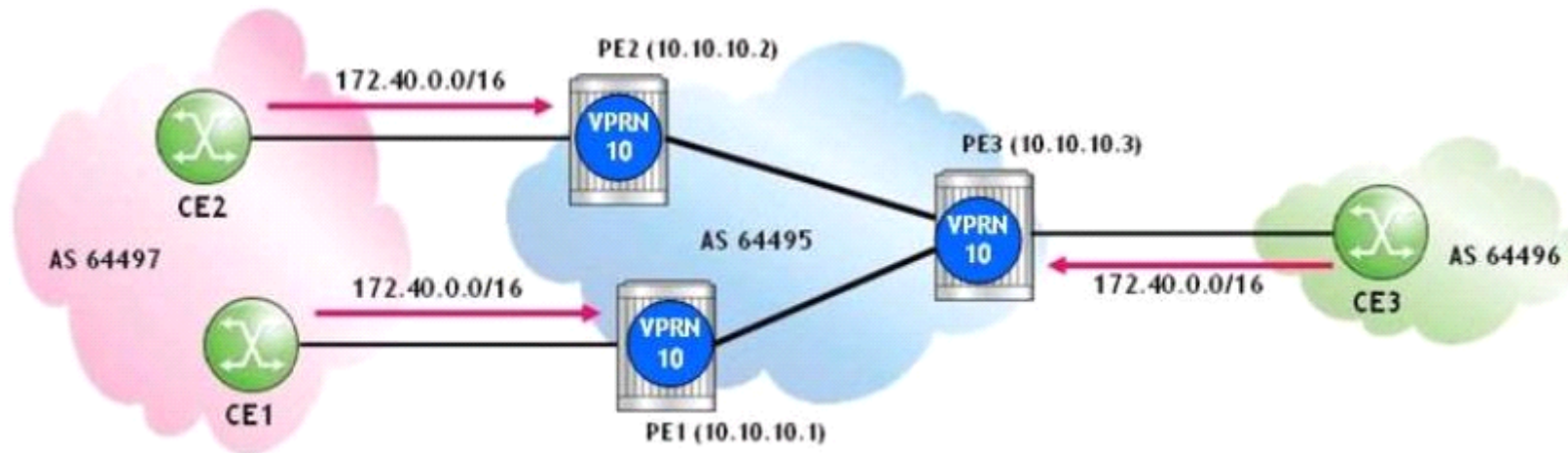
## Question 5

---

**Question Type:** MultipleChoice

---

Click the exhibit.



```
PE1# configure service vprn 10
PE1>config>service>vprn# route-distinguisher 64495:20
```

```
PE2# configure service vprn 10
PE2>config>service>vprn# route-distinguisher 64495:20
```

```
PE3# configure service vprn 10
PE3>config>service>vprn# route-distinguisher 64495:10
PE3>config>service>vprn# ecmp 2
PE3>config>service>vprn# bgp multipath 2
PE3>config>service>vprn# bgp eibgp-loadbalance
```

Based on the displayed configuration, which routes does PE3 place in the VPRN 10 routing table?

Options:

---

- A- The routes learned from CE3 and PE1.
- B- The route learned from CE3 only.
- C- The routes learned from PE1 and PE2.
- D- The routes learned from CE3 and PE2.

**Answer:**

---

A

## Question 6

---

**Question Type:** MultipleChoice

---

A service provider core consists of 6 PE and 4 P routers. Assuming route reflection is not used, how many internal BGP sessions are required in the service provider network for a correct operation of VPRN services?

**Options:**

---

A- 1

B- 5



C- 15

D- 30

E- 45

**Answer:**

---

C

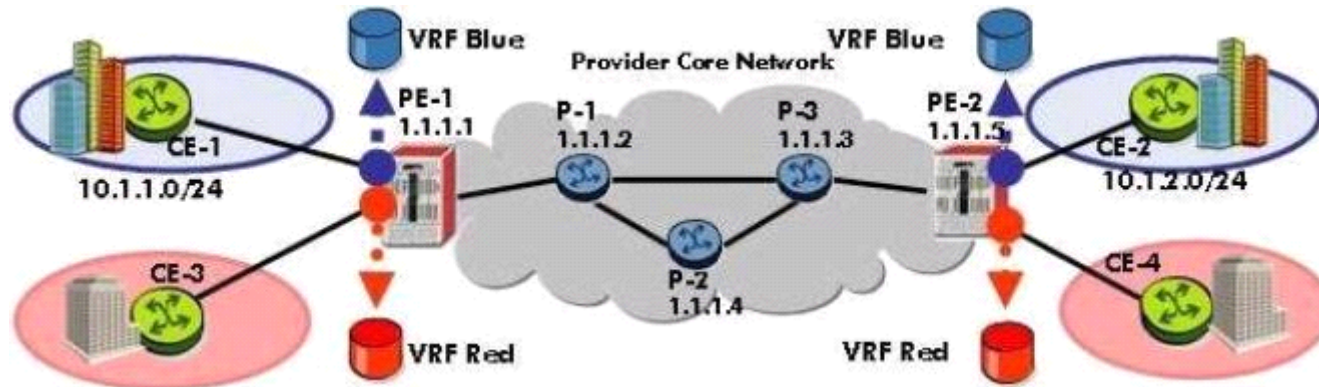
## **Question 7**

---

**Question Type: MultipleChoice**

---

Click the exhibit.



```

*A:PE-1# configure service vprn 20 customer 101 create
*A:PE-1>config>service>vprn$ description "VPRN Blue"
*A:PE-1>config>service>vprn$ route-distinguisher 65100:101
*A:PE-1>config>service>vprn$ vrf-target target:65100:101
*A:PE-1>config>service>vprn$ auto-bind ldp
*A:PE-1>config>service>vprn$ router-id 1.1.1.1
*A:PE-1>config>service>vprn$ interface to-CE-1 create
*A:PE-1>config>service>vprn>if$ address 10.1.6.1/27
*A:PE-1>config>service>vprn>if$ sap 1/1/2 create
*A:PE-1>config>service>vprn>if$ exit
*A:PE-1>config>service>vprn$

```

What is wrong with the VPRN configuration applied on this Nokia 7750 SR?

**Options:**

- A- The VPRN ID must match the value used in the vrf-target command.
- B- The VPRN ID must match the value used in the route-distinguisher command.

**C-** The router-id command should not be used in this context.

**D-** The 'no shutdown' command must be configured for the VPRN to be operationally UP.

**Answer:**

---

D

**To Get Premium Files for 4A0-106 Visit**

**<https://www.p2pexams.com/products/4a0-106>**

**For More Free Questions Visit**

**<https://www.p2pexams.com/nokia/pdf/4a0-106>**

