



**Free Questions for EX200 by certsdeals**

**Shared by Levy on 29-01-2024**

**For More Free Questions and Preparation Resources**

**Check the Links on Last Page**

# Question 1

---

## Question Type: MultipleChoice

---

Create a volume group, and set the size is 500M, the size of single PE is 16M. Create logical volume named lv0 in this volume group, set size is 20 PE, make it as ext3 file system, and mounted automatically under data.

### Options:

---

**A-** Explanation:

```
fdisk /dev/vda
```

```
pvcreate /dev/vda3
```

```
vgcreate --s 16M vg0 /dev/vda3
```

```
lvcreate --n lv0 --l 20 vg0
```

```
mkfs.ext3 /dev/mapper/vg0-lv0
```

```
mkdir /data
```

```
/etc/fstab:
```

```
/dev/mapper/vg0-lv0 /data ext3 defaults 0 0
```

```
mount --a
```

```
mount | grep data
```

### Answer:

---

A

## Question 2

---

**Question Type:** MultipleChoice

---

Configure your web services, download from <http://instructor.example.com/pub/serverX.html> And the services must be still running after system rebooting.

### Options:

---

**A-** Explanation:

```
cd /var/www/html
```

```
wget http://instructor.example.com/pub/serverX.html mv serverX.html index.html /etc/init.d/httpd restart
```

```
chkconfig httpd on
```

### Answer:

---

A

## Question 3

---

**Question Type: MultipleChoice**

---

Configure the FTP service in your system, allow remote access to anonymous login and download the program by this service. Service is still running after system rebooting.

**Options:**

---

**A-** Explanation:

yum install vsftpd

/etc/init.d/vsftpd start

chkconfig vsftpd on

**Answer:**

---

A

## Question 4

---

**Question Type: MultipleChoice**

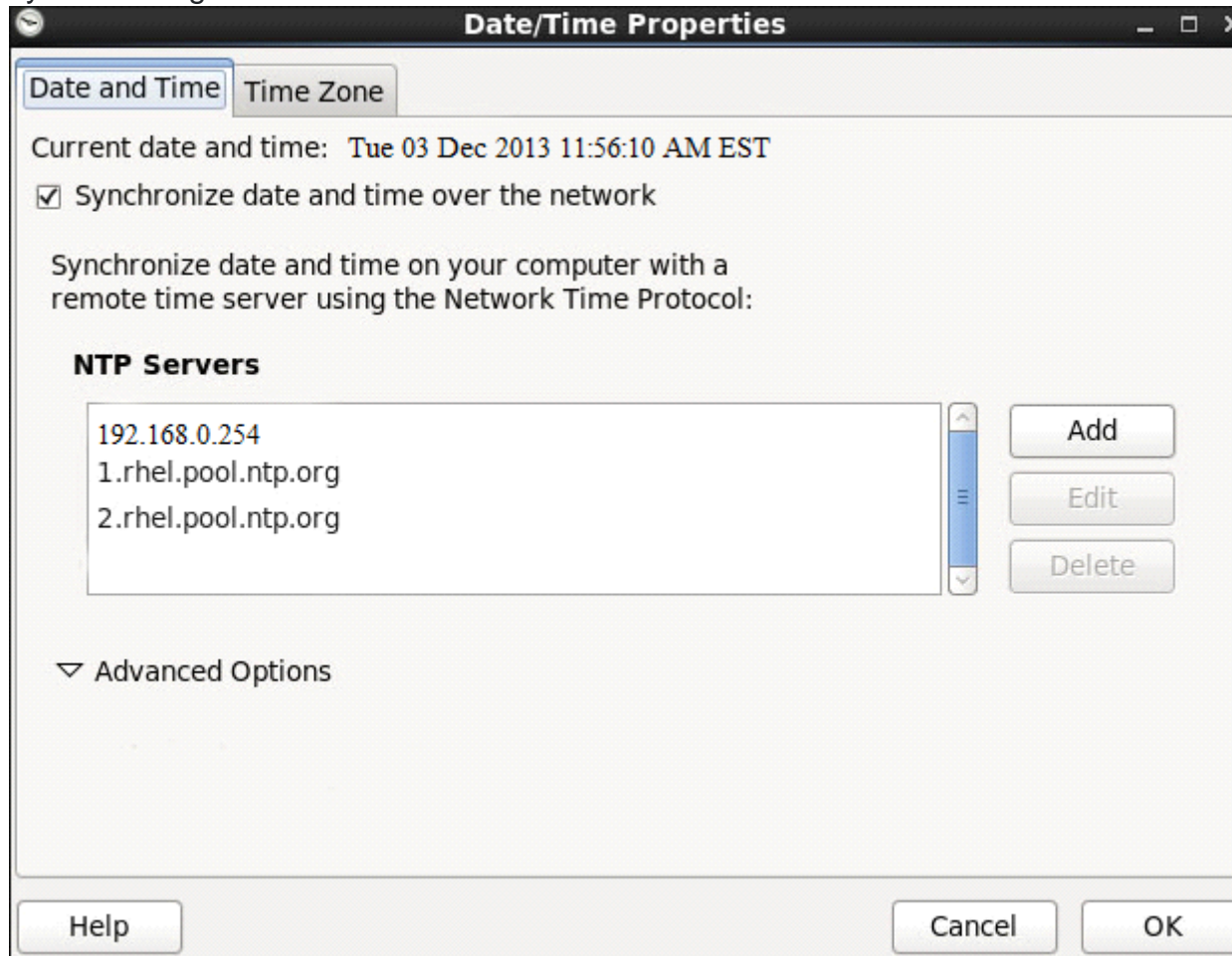
---

Configure the NTP service in your system.

## Options:

A- Explanation:

system-config-date &



**Answer:**

---

A

## Question 5

---

**Question Type: MultipleChoice**

---

Copy /etc/fstab document to /var/TMP directory. According the following requirements to configure the permission of this document.

The owner of this document must be root.

This document belongs to root group.

User mary have read and write permissions for this document.

User alice have read and execute permissions for this document.

Create user named bob, set uid is 1000. Bob have read and write permissions for this document.

All users has read permission for this document in the system.

**Options:**

---

**A-** Explanation:

```
cp /etc/fstab /var/tmp
chown root:root /var/tmp/fstab
chmod a-x /var/tmp/fstab
setfacl --m u:mary:rw /var/tmp/fstab
setfacl --m u:alice:rx /var/tmp/fstab
useradd --u 1000 bob
```

### Answer:

---

A

## Question 6

---

### Question Type: MultipleChoice

---

According the following requirements, configure autofs service and automatically mount to user's home directory in the ldap domain.

- Instructor.example.com (192.168.0.254) has shared /home/guests/ldapuserX home directory to your system by over NFS export, X is your hostname number.
- LdapuserX's home directory is exist in the instructor.example.com: /home/ guests/ldapuserX
- LdapuserX's home directory must be able to automatically mount to /home/ guests/ldapuserX in your system.
- Home directory have write permissions for the corresponding user.

However, you can log on to the ldapuser1 - ldapuser99 users after verification. But you can only get your corresponding ldapuser users. If your system's hostname is server1.example.com, you can only get ldapuser1's home directory.

### Options:

---

**A-** Explanation:

```
mkdir --p /home/guests
```

```
cat /etc/auto.master:
```

```
/home/guests /etc/auto.ldap
```

```
cat /etc/auto.ldap:
```

```
ldapuser1 -rw instructor.example.com:/home/guests/ldapuser1
```

```
automatically mount all the user's home directory #* -rw instructor.example.com:/home/guests/&
```

### Answer:

---

A

## Question 7

---

**Question Type:** MultipleChoice

---

The user authentication has been provided by ldap domain in 192.168.0.254. According the following requirements to get ldapuser.



-LdapuserX must be able to login your system, X is your hostname number. But the ldapuser's home directory cannot be mounted, until you realize automatically mount by autofs server.

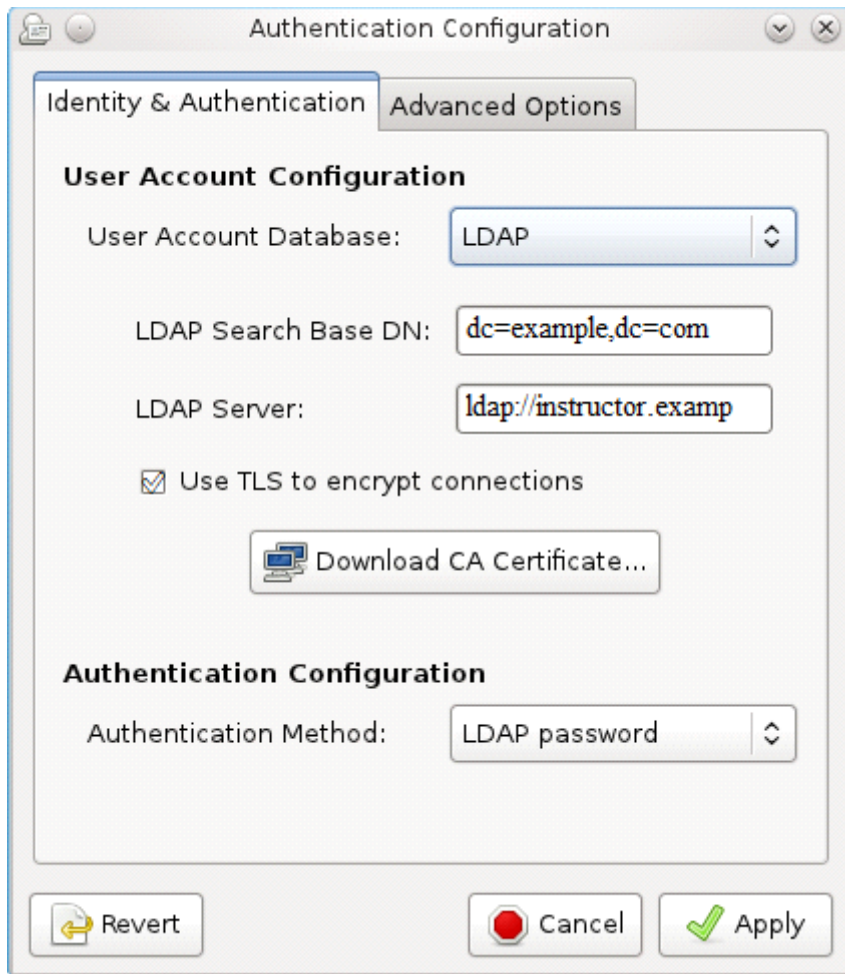
- All ldap user's password is "password".

## Options:

---

**A-** Explanation:

system-config-authentication &



**Answer:**

---

A

## Question 8

---

**Question Type:** MultipleChoice

---

User mary must configure a task.

Requirement: The local time at 14:23 every day echo "Hello World.".

### Options:

---

**A-** Explanation:

```
crontab -u mary -e
```

```
23 14 * * * echo 'Hello World.'
```

### Answer:

---

A

## Question 9

---

**Question Type:** MultipleChoice

---

Update the kernel from ftp://instructor.example.com/pub/updates.

According the following requirements:

The updated kernel must exist as default kernel after rebooting the system.

The original kernel still exists and is available in the system.

### Options:

---

**A-** Explanation:

rpm -ivh kernel-firm...

rpm -ivh kernel...

### Answer:

---

A

## Question 10

---

**Question Type:** MultipleChoice

---

According the following requirements to create a local directory /common/admin.

This directory has admin group.

This directory has read, write and execute permissions for all admin group members.

Other groups and users don't have any permissions.

All the documents or directories created in the /common/admin are automatically inherit the admin group.

### Options:

---

**A-** Explanation:

```
mkdir -p /common/admin
```

```
chgrp admin /common/admin
```

```
chmod 2770 /common/admin
```

### Answer:

---

A

## Question 11

---

**Question Type:** MultipleChoice

---

According the following requirements to create user, user group and the group members:

- A group named admin.
- A user named mary, and belong to admin as the secondary group.
- A user named alice, and belong to admin as the secondary group.
- A user named bobby, bobby's login shell should be non-interactive. Bobby not belong to admin as the secondary group.

Mary, Alice, bobby users must be set "password" as the user's password.

### Options:

---

**A-** Explanation:

```
groupadd admin
```

```
useradd -G admin mary
```

```
useradd -G admin alice
```

```
useradd -s /sbin/nologin bobby
```

```
echo 'password' | passwd --stdin mary
```

```
echo 'password' | passwd --stdin alice
```

```
echo 'password' | passwd --stdin bobby
```

### Answer:

---

A



**To Get Premium Files for EX200 Visit**

**<https://www.p2pexams.com/products/ex200>**

**For More Free Questions Visit**

**<https://www.p2pexams.com/redhat/pdf/ex200>**

