



**Free Questions for 4A0-C04 by certsdeals**

**Shared by Rodgers on 12-12-2023**

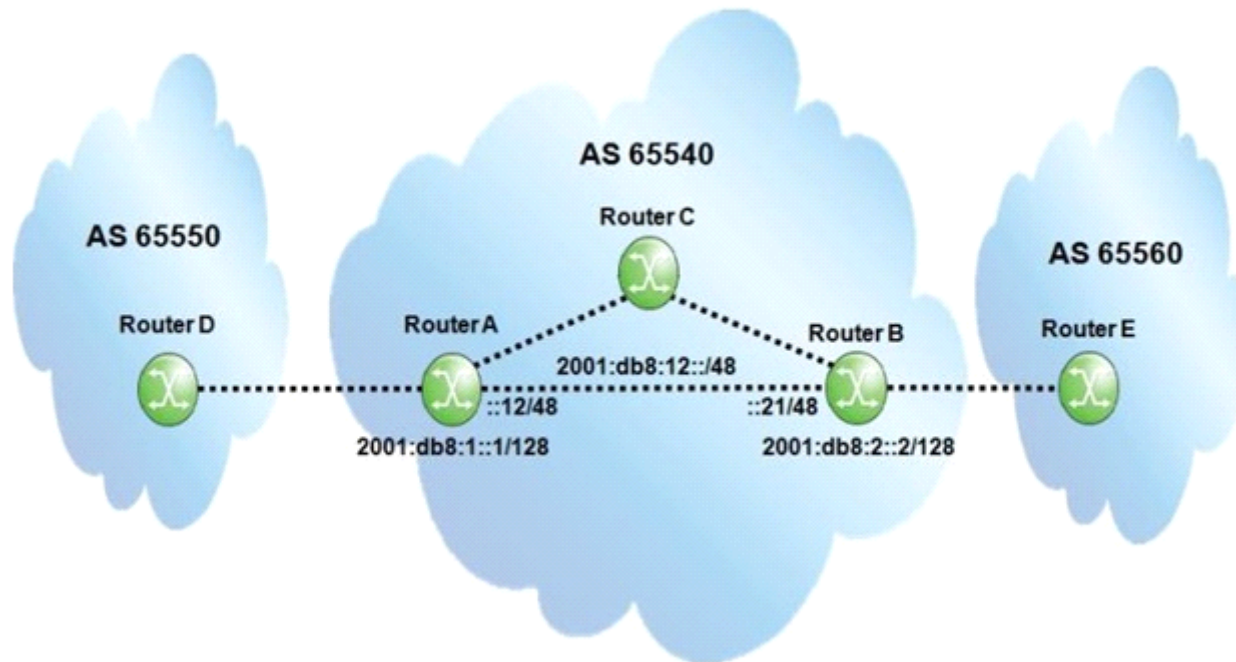
**For More Free Questions and Preparation Resources**

**Check the Links on Last Page**

# Question 1

Question Type: MultipleChoice

Click the exhibit.



Assume all router-IDs are properly configured, and global IPv6 addresses are used to establish eBGP sessions. Which of the following configurations is required on router A so that router B can exchange traffic with router D?

- A. 

```
group "IPv6_iBGP"  
  family ipv6  
  next-hop-self  
  peer-as 65540  
  neighbor 2001:DB8:2::2  
  exit  
exit
```
- B. 

```
group "IPv6_iBGP"  
  next-hop-self  
  type internal  
  peer-as 65540  
  neighbor 2001:DB8:2::2  
  exit  
exit
```
- C. 

```
group "IPv6_iBGP"  
  family ipv6  
  peer-as 65540  
  neighbor 2001:DB8:2::2  
  exit  
exit
```
- D. 

```
group "IPv6_iBGP"  
  family ipv6  
  next-hop-self  
  type internal  
  neighbor 2001:DB8:2::2  
  exit  
exit
```

**Options:**

---

A- Option A

B- Option B

C- Option C

D- Option D

**Answer:**

---

A

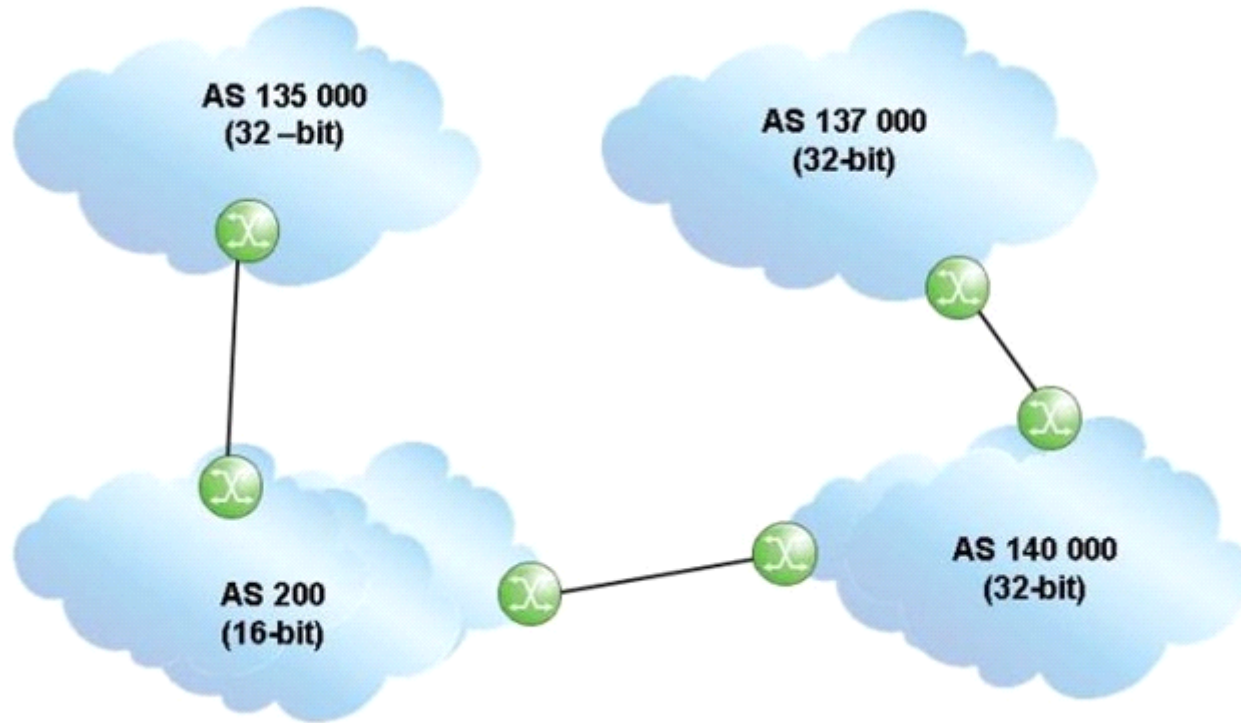
## Question 2

---

**Question Type:** MultipleChoice

---

Click the exhibit.



An update travels from AS 137000 to AS 135000, traversing both 32-bit and 16-bit AS Paths.

What AS Path is seen by AS 200?

**Options:**

---

**A-** 140000 137000

**B-** 137000 140000

C- 23456 23456

D- 200 140000 137000

**Answer:**

---

C

## Question 3

---

**Question Type: MultipleChoice**

---

An autonomous system has 7 routers configured with BGP. How many iBGP sessions are required for a fully meshed configuration?

**Options:**

---

A- 7

B- 13

C- 21

D- 42

Answer:

---

C

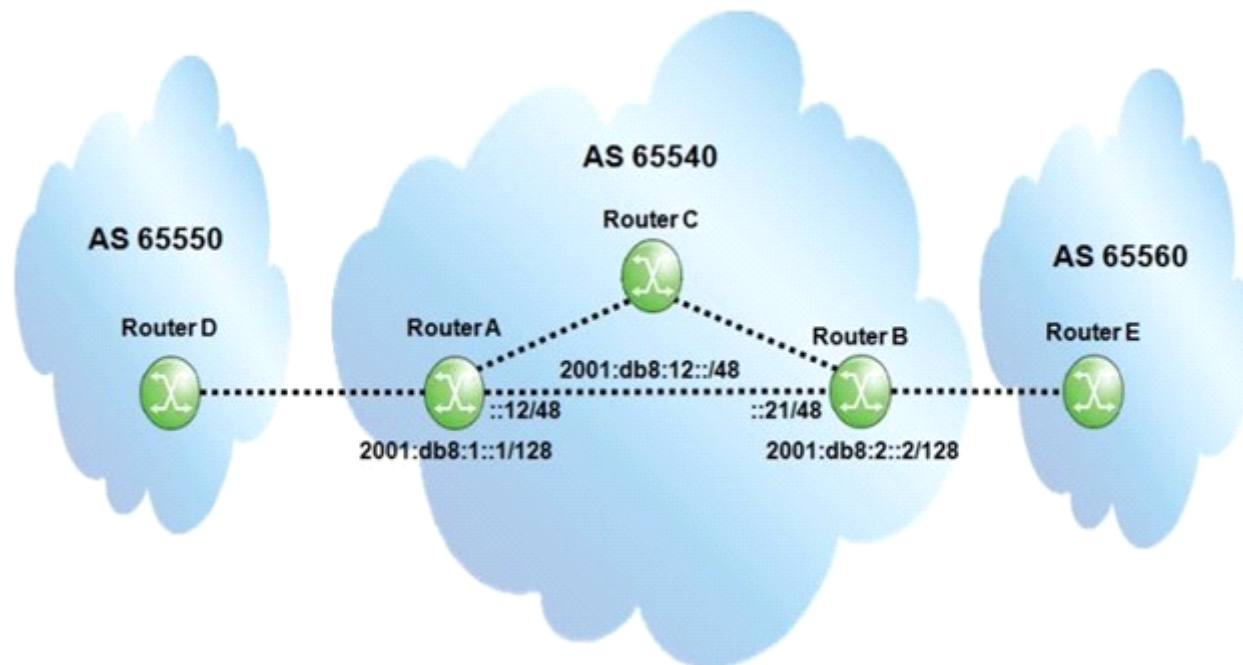
## Question 4

---

Question Type: MultipleChoice

---

Click the exhibit.



Assuming the network is IPv6 only, which of the following configurations on the Nokia 7750 SR router A can establish an IPv6 BGP session to router B?



- A. 

```
router-id 10.10.10.1
group "IPv6_iBGP"
  family ipv6
  peer-as 65540
  neighbor 2001:DB8:2::2
  exit
exit
```
- B. 

```
group "IPv6_iBGP"
  family ipv6
  type internal
  peer-as 65540
  neighbor 2001:DB8:2::2
  exit
exit
```
- C. 

```
group "IPv6_iBGP"
  family ipv6
  type internal
  peer-as 65540
  neighbor 2001:DB8:12::21
  exit
exit
```
- D. 

```
group "IPv6_iBGP"
  family ipv6
  type internal
  neighbor 2001:DB8:2::2
  exit
exit
```

**Options:**

---

A- Option A

B- Option B

C- Option C

D- Option D

**Answer:**

---

A

## Question 5

---

**Question Type:** MultipleChoice

---

Which of the following statements regarding BGP shortcuts is FALSE?

**Options:**

---

A- MPLS tunnels are used to carry transit traffic across the network.

- B-** A full mesh of iBGP peering sessions is not required,
- C-** Edge and transit routers need to be configured with BGP.
- D-** The transit routers need to support LDP or RSVP-TE LSPs.

**Answer:**

---

C

## Question 6

---

**Question Type:** MultipleChoice

---

Which of the following regarding BGP Path Identifier is FALSE?

**Options:**

---

- A-** Path-ID is a four-octet identifier pre-pended to the NLRI field of a BGP update.
- B-** Path-ID is an optional transitive attribute used to advertise multiple paths.
- C-** Path-ID uniquely identifies each path advertised to a neighbor.
- D-** A BGP speaker that re-advertises a route must generate its own Path-ID.

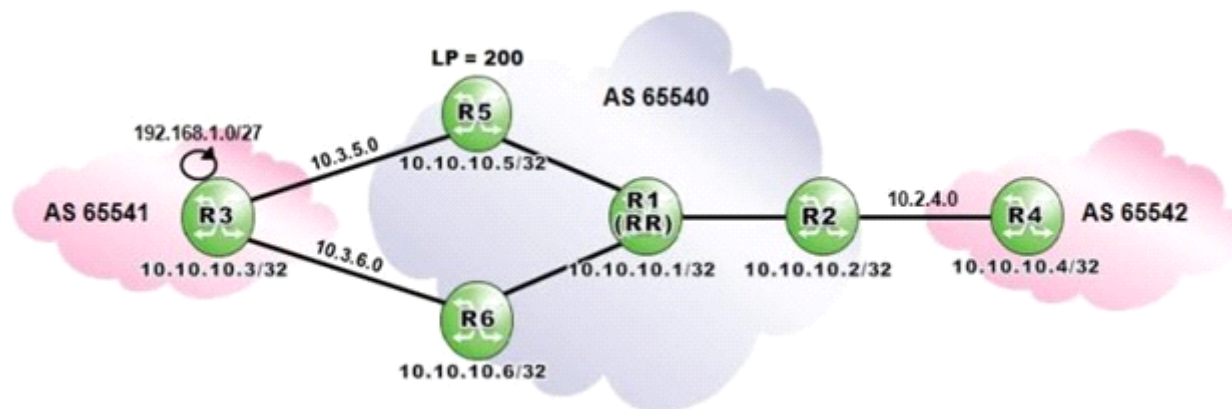
Answer:

B

## Question 7

Question Type: MultipleChoice

Click the exhibit.



Router R1 is a route reflector with clients R2, R5 and R6. Prefixes advertised by router R5 have a local preference of 200. Router R3 advertises the prefix 192.168.1.0/27 to routers R5 and R6.

Assuming that none of the routers in AS 65540 is configured with "advertise-external", what is the expected output of "show router bgp routes" on router R5?



Flag	Network	LocalPref	MED
	Nextthop As-Path	Path-Id	VPNLabel
u*>i	192.168.1.0/27 10.3.5.3 65541	200 None	None -

Flag	Network	LocalPref	MED
	Nextthop As-Path	Path-Id	VPNLabel
u*>i	192.168.1.0/27 10.3.5.3 65541	None None	None -
i	192.168.1.0/27 10.10.10.5 65541	200 None	None -
i	192.168.1.0/27 10.10.10.6 65541	100 None	None -

Flag	Network	LocalPref	MED
	Nextthop As-Path	Path-Id	VPNLabel
u*>i	192.168.1.0/27 10.3.5.3 65541	None None	None -
i	192.168.1.0/27 10.10.10.5 65541	200 None	None -

Flag	Network	LocalPref	MED
	Nextthop As-Path	Path-Id	VPNLabel
u*>i	192.168.1.0/27 10.10.10.5 65541	200 None	None -
i	192.168.1.0/27	100	None

**Options:**

---

A- Option A

B- Option B

C- Option C

D- Option D

**Answer:**

---

C

## Question 8

---

**Question Type:** MultipleChoice

---

Click the exhibit.



Which of the following is a valid confederation configuration for Router R2?



- A. R2>config>router# info  
-----  
autonomous-system 65540  
confederation 65540 members 65541 65542
- B. R2>config>router# info  
-----  
autonomous-system 65542  
confederation 65540 members 65541
- C. R2>config>router# info  
-----  
autonomous-system 65542  
confederation 65540 members 65541 65542
- D. R2>config>router# info  
-----  
autonomous-system 65540  
confederation 65542 members 65541

**Options:**

---

**A-** Option A

**B-** Option B

**C-** Option C

**D-** Option D

**Answer:**

---

C

## Question 9

---

**Question Type:** MultipleChoice

---

Which of the following regarding route reflectors is TRUE?

**Options:**

---

**A-** Only the route reflector is configured with a cluster id.

**B-** There can only be one route reflector in a cluster.

**C-** Clients should have iBGP sessions with each other to maintain the mesh.

**D-** There can only be one level of route reflectors in the topology.

**Answer:**

---

A

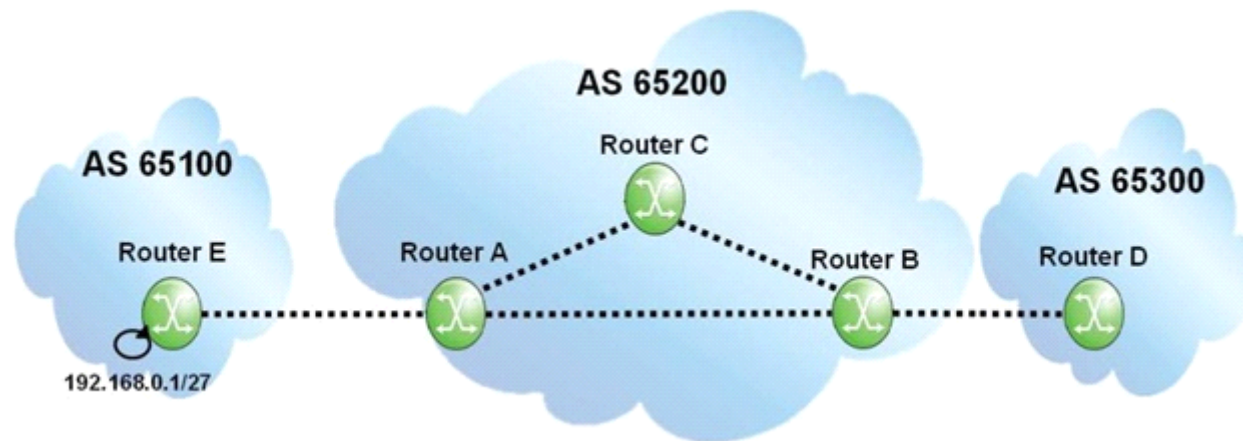
## Question 10

---

**Question Type:** MultipleChoice

---

Click the exhibit.



When router A receives the BGP update for the 192.168.0.1/27 prefix, it propagates it to routers B and C. What action is taken by router B when it receives the update?

**Options:**

---

- A-** Router B propagates the BGP update to routers D and C.
- B-** Router B propagates the BGP update to router D.
- C-** Router B detects duplicates in its BGP database and discards the update.
- D-** Router B propagates the update to routers A, C and D.

**Answer:**

---

B

**To Get Premium Files for 4A0-C04 Visit**

**<https://www.p2pexams.com/products/4a0-c04>**

**For More Free Questions Visit**

**<https://www.p2pexams.com/nokia/pdf/4a0-c04>**

