



**Free Questions for 4A0-102 by certsinside**

**Shared by Roy on 29-01-2024**

**For More Free Questions and Preparation Resources**

**Check the Links on Last Page**

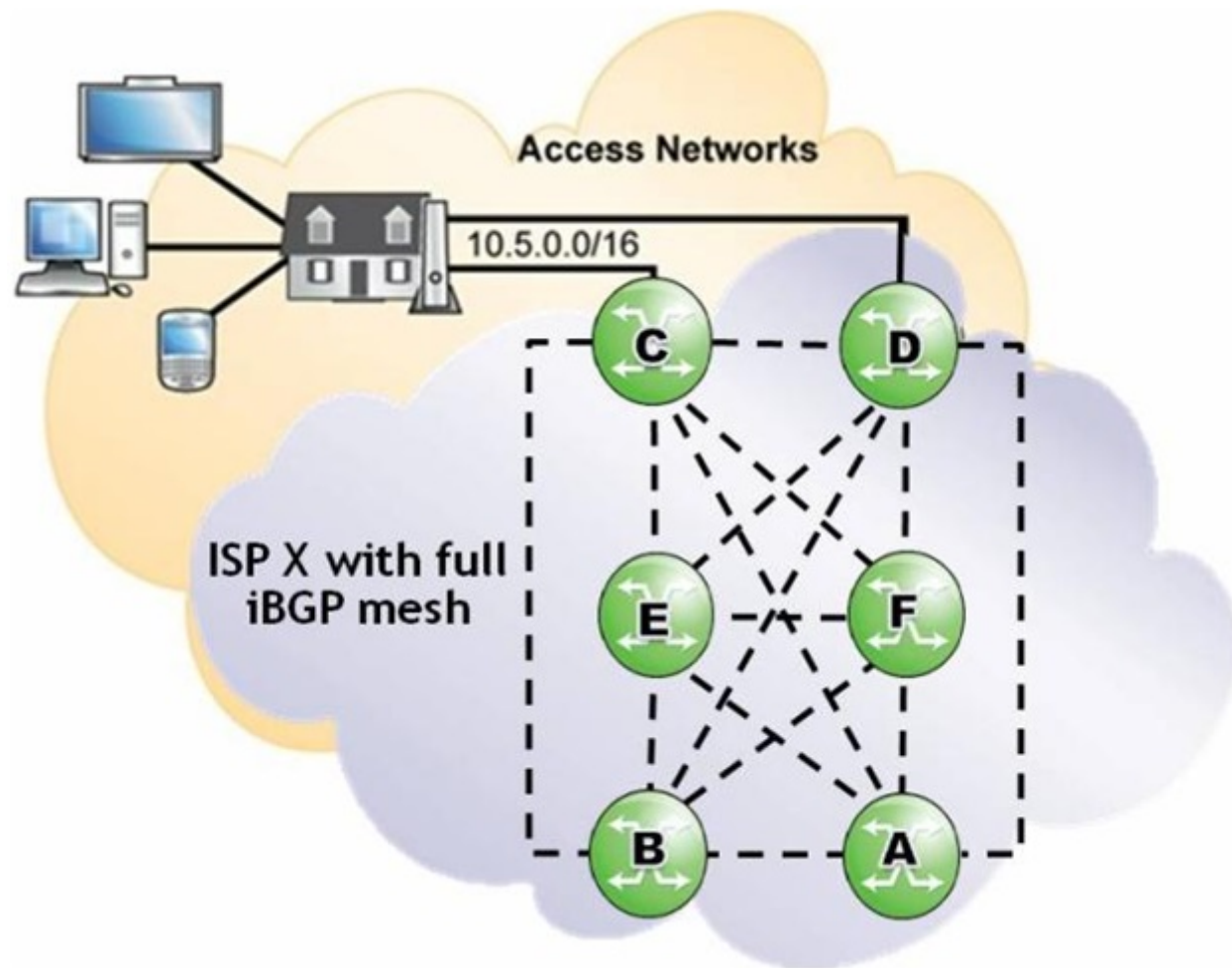
# Question 1

---

**Question Type:** MultipleChoice

---

Click the exhibit.



Considering that both routers C and D are advertising the eBGP learned prefix 10.5.0.0/16 into ISP X, which of the following best describes the route advertisement within ISP X?

**Options:**

---

- A-** Router C sends the update to routers E and F only.
- B-** Router C sends the update to routers D, E and F
- C-** Router C sends the update to routers A, B, E and F
- D-** Router C sends the update to routers A, B, D, E and F

**Answer:**

---

D

## Question 2

---

**Question Type:** MultipleChoice

---

What will happen if an update is received with an unrecognized optional non-transitive attribute?

**Options:**

---

- A-** The router will accept the update and send a notification.

- B-** The router will not accept the update and send a notification.
- C-** The router will accept the update and ignore the attribute.
- D-** The router will accept the update and propagate the attribute.

**Answer:**

---

C

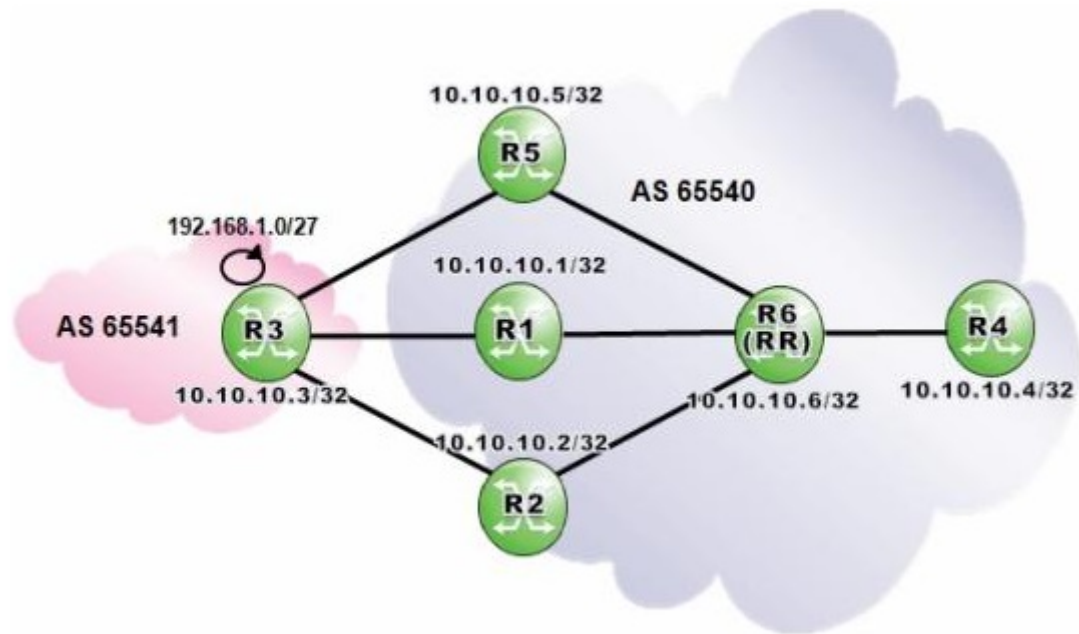
## Question 3

---

**Question Type:** MultipleChoice

---

Click the exhibit.



Router R6 is a route reflector with clients R1, R2, R4 and R5. Router R4 receives three routes from router R6 and is configured with ECMP 3. Given the following BGP configuration on router R4, how many primary and backup paths will be present in router R4's BGP routing table?

```
R4>config>router>bgp# info
```

```
-----  
    multipath 2  
    add-paths  
        ipv4 send 3 receive  
    exit  
    backup-path ipv4  
    group "IBGP"  
        peer-as 65540  
        neighbor 10.10.10.6  
    exit  
exit
```

### Options:

---

- A- Three primary paths,
- B- Two primary paths and one backup path.
- C- One primary path and two backup paths.
- D- One primary path and one backup path.

### Answer:

---

B

## Question 4

---

**Question Type:** MultipleChoice

---

Which of the following statements regarding BGP Fast Reroute is FALSE?

### Options:

---

- A-** BGP Fast Reroute is triggered by IGP events.
- B-** The backup path is pre-computed and installed in the FIB
- C-** BGP Fast Reroute is independent of number of affected prefixes.
- D-** BGP Fast Reroute uses the optimal path to the destination.

### Answer:

---

D

## Question 5

---



**Question Type: MultipleChoice**

---

Two Alcatel-Lucent 7750 SRs are established BGP peers with the following add-paths configuration:

R1: configure router bgp add-paths ipv4 send 4 receive

R2: configure router bgp add-paths ipv4 send 2

If router R1 advertises three routes for a given prefix X, how many routes is router R2 expected to have for prefix X?

**Options:**

---

**A-** None

**B-** 2

**C-** 3

**D-** 4

**Answer:**

---

C

**Question 6**

---

**Question Type: MultipleChoice**

---

A confederated AS is comprised of three members. One member is comprised of 4 routers, while the other two members are comprised of 3 routers each. Assuming member ASs are fully meshed and use full mesh iBGP, what is the required number of BGP sessions within the confederation?

**Options:**

---

**A-** 12

**B-** 13

**C-** 14

**D-** 15

**Answer:**

---

D

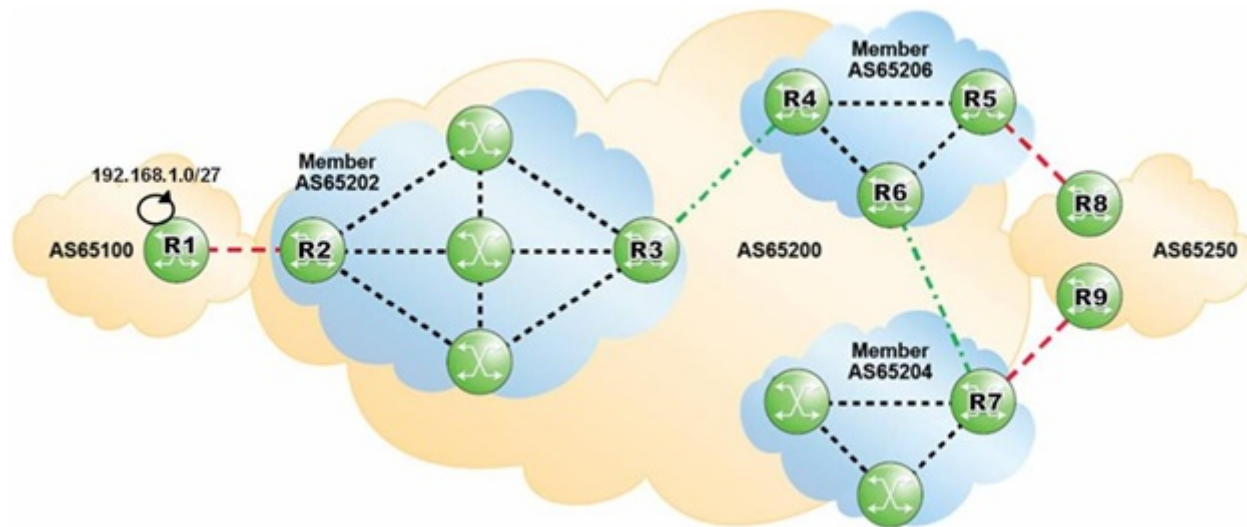
## Question 7

---

**Question Type: MultipleChoice**

---

Click the exhibit.



AS 65100 is advertising 192.168.1.0/27 into BGP. Which of the following AS Paths would the prefix 192.168.1.0/27 contain when viewed on router R8?

### Options:

- A- 65200 (65206 65202) 65100
- B- (65206 65202)65100
- C- 65250 (65206 65202) 65100
- D- 65200 65100

**Answer:**

---

D

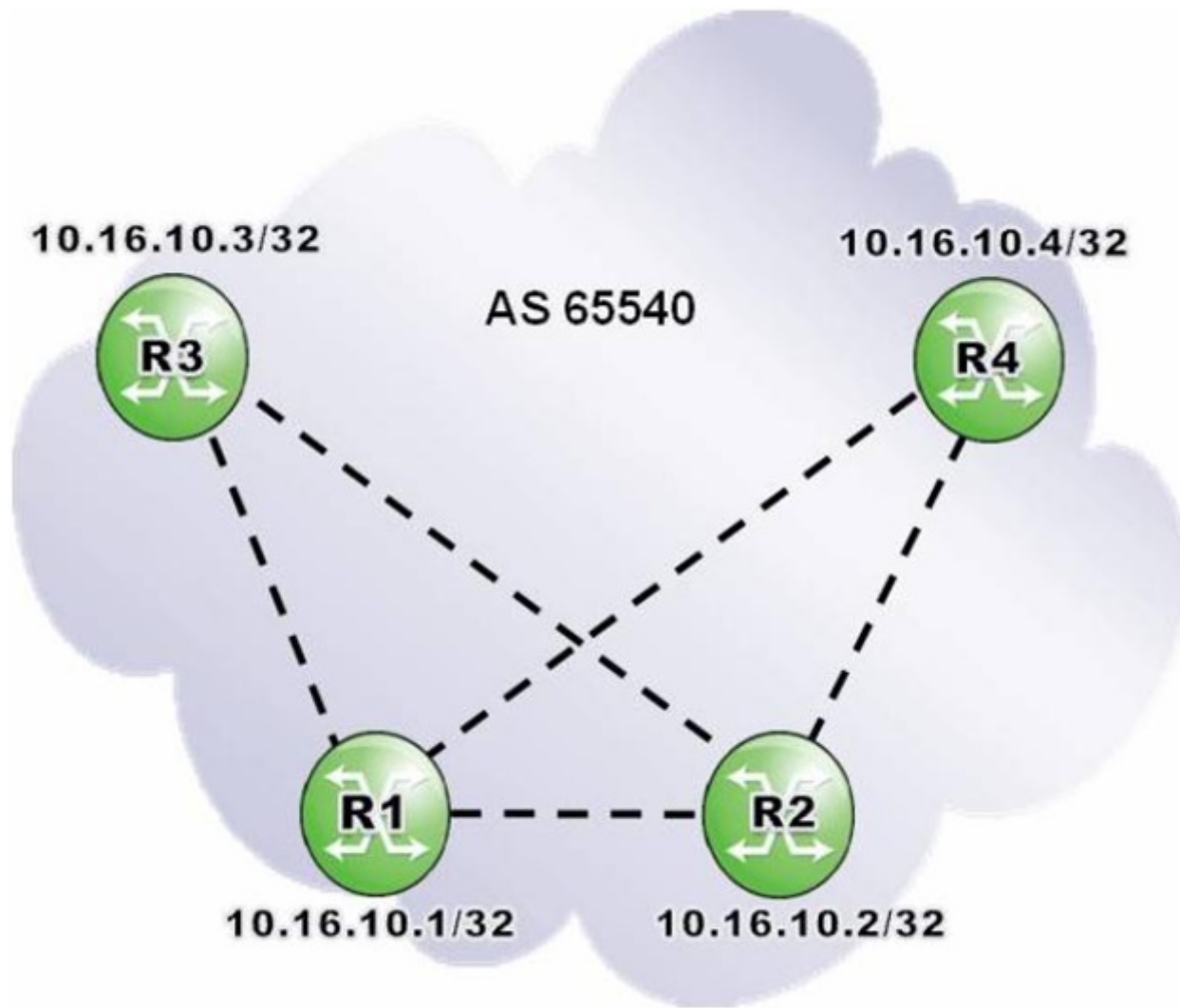
## Question 8

---

**Question Type:** MultipleChoice

---

Click the exhibit.



Given the following configuration of router R1, what can be said about the function of each of AS 65540s routers?

```
R1>config>router>bgp# info
```

```
-----
```

```
group "AS 65540 iBGP"
```

```
    peer-as 65540
```

```
    neighbor 10.16.10.2
```

```
    exit
```

```
    neighbor 10.16.10.3
```

```
        cluster 10.16.10.1
```

```
    exit
```

```
    neighbor 10.16.10.4
```

```
        cluster 10.16.10.1
```

```
    exit
```

```
exit
```

### Options:

---

- A- Routers R1 and R2 are redundant route reflectors with clients R3 and R4.
- B- Routers R3 and R4 are route reflectors with clients R1 and R2.
- C- Router R1 is a route reflector with clients R2, R3 and R4.
- D- Router R1 is a route reflector with clients R3 and R4.

### Answer:

---

D

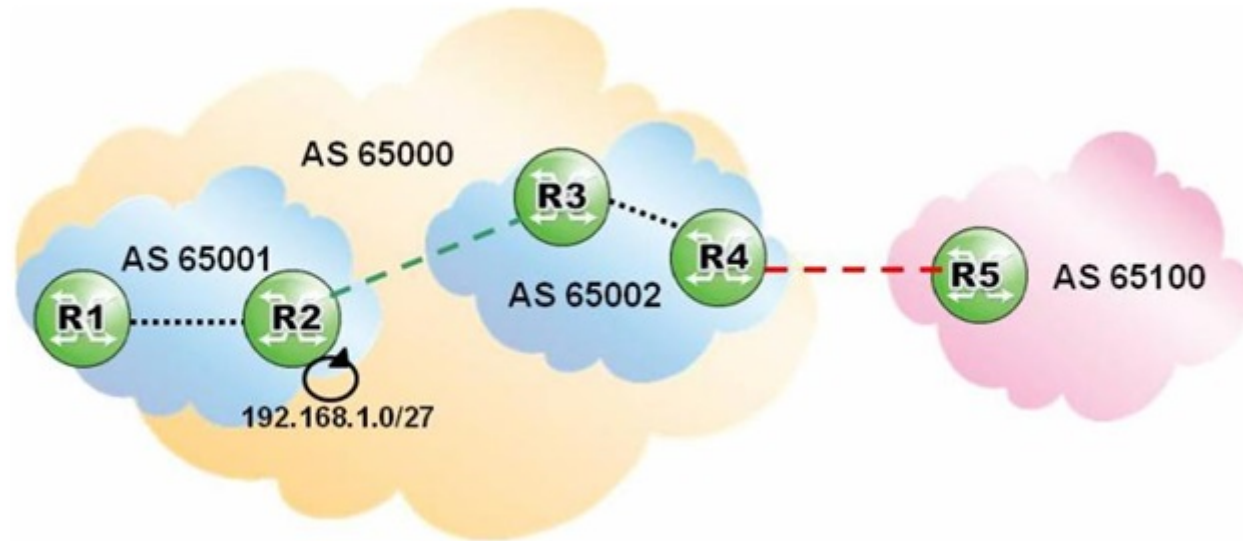
## Question 9

---

**Question Type:** MultipleChoice

---

Click the exhibit.



Router R2 is advertising prefix 192.168.1.0/27 with community "no-advertise" towards AS 65002. Which routers receive an update for that prefix?

#### Options:

---

- A- Router R3 only.
- B- Routers R3 and R4 only.
- C- Routers R3, R4 and R5 only.
- D- Router R2 does not advertise an update for the prefix.

#### Answer:

---



A

## Question 10

---

**Question Type:** MultipleChoice

---

An Alcatel-Lucent 7750 SR receives a route from an eBGP peer with a MED value of 500. What MED value is sent to iBGP peers?

**Options:**

---

**A-** 100

**B-** The IGP cost

**C-** 500

**D-** None

**Answer:**

---

C

## Question 11

---

**Question Type: MultipleChoice**

---

Which of the following prefix lists include prefixes 192.168.128.0/17 and 192.168.64.0/18?

**Options:**

---

- A-** Prefix list 192.168.0.0/16 through 18.
- B-** Prefix 192.168.0.0/17 longer.
- C-** Prefix list 192.168.0.0/17 through 18.
- D-** Prefix 192.160.0.0/13 longer.

**Answer:**

---

A

**To Get Premium Files for 4A0-102 Visit**

**<https://www.p2pexams.com/products/4a0-102>**

**For More Free Questions Visit**

**<https://www.p2pexams.com/nokia/pdf/4a0-102>**

