



Free Questions for *APD01* by *certsinside*

Shared by *Santiago* on *12-12-2023*

For More Free Questions and Preparation Resources

Check the Links on Last Page

Question 1

Question Type: MultipleChoice

Which of the following statements regarding Blue Prism Login Agent are true? (Select all that apply.)

Options:

- A-** Windows passwords can be changed using Login Agent Functionality
- B-** It is possible to use a SAS (Secure Attention Sequence) service with Login Agent to traverse the 'Press CTRL + ALT + DELETE to log on' screen
- C-** Blue Prism Login Agent can be used to lock a Resource PC
- D-** You cannot configure the Blue Prism scheduler to login via Login Agent and then run a business process once it has logged in

Answer:

A, B

Question 2

Question Type: MultipleChoice

Which of the following statements about Blue Prism and Web Services are correct? (Choose three.)

Options:

- A-** Blue Prism web services are executed on Blue Prism Runtime Resources
- B-** Only Blue Prism Processes can be exposed as a Web Service
- C-** A Blue Prism Business Object is exposed as a Web Service in the System Manager area of Blue Prism
- D-** Both Blue Prism Processes or Business Objects can be exposed as a Web Service

Answer:

B, C, D

Question 3

Question Type: MultipleChoice

Which of the following statements about Blue Prism Web Service parameters are correct? (Choose two.)

Options:

- A- Flag is a valid output parameter
- B- Binary is a valid output parameter
- C- Duration is a valid output parameter
- D- Blue Prism Web Services cannot have output parameters

Answer:

A, B

Explanation:

<https://usermanual.wiki/Pdf/Blue20Prism20User20Guide2020Web20Services.795353567/html>

Question 4

Question Type: MultipleChoice

Which of the following are correct? (Choose three.)

Options:

- A- Blue Prism web services are secured using HTTP authentication.
- B- Recursive definitions within WSDLs are supported by Blue Prism.
- C- Blue Prism can consume third-party web services presented over HTTPs assuming the runtime resources are configured to trust the certificate that is used to secure the web service
- D- Blue Prism supports binary data as inputs and outputs for web services.

Answer:

A, C, D

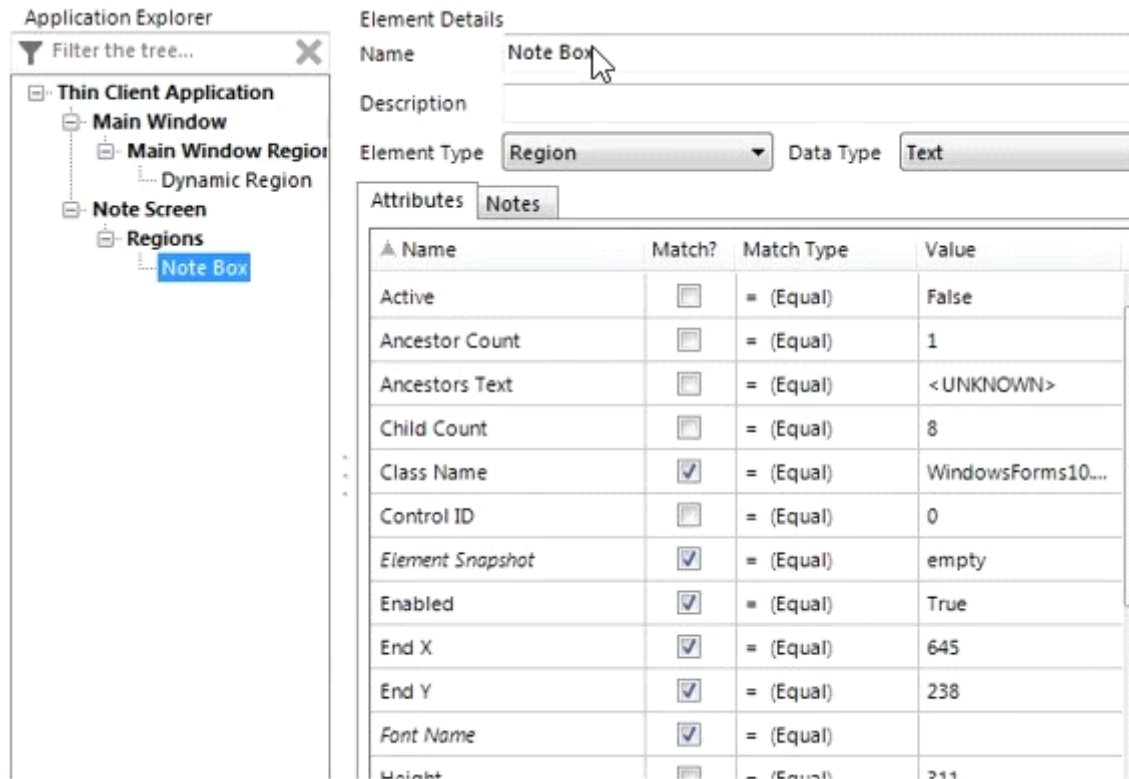
Question 5

Question Type: MultipleChoice

Using Surface Automation there is requirement to enter a note in the Note field on the screen below:

The image shows a standard Windows-style dialog box titled "Add Note". It features a title bar with a close button (X) in the top right corner. The main content area is organized into three sections: a "Name" label followed by a text input field containing "BP0100"; a "Type" label followed by a dropdown menu with "Information" selected; and a "Note" label followed by a large, empty text area with a mouse cursor pointing to it. At the bottom right of the dialog, there are two buttons: "OK" and "Cancel".

The Note Box element has been spied as a Region:



On Launching the Add Note screen, the cursor is in the Name field and the Notes field will be empty.

Which of the following is the most appropriate sequence of stages to enter the note into the Note field?

Options:

A- Send a Global Mouse Click Centre to the Note Box element, followed by a tiny unconditional wait stage, followed by a Global Send

Keys to the application.

B- Use a Write stage to write data to the Note Box element

C- Send a Global Mouse Click Centre to the Note Box element, followed by a tiny unconditional wait stage, followed by a Write Stage to the Note Box element

D- Send a Global Mouse Click Centre to the Note Box element, followed by a tiny unconditional wait stage, followed by a Global Send Keys to the Note Box element

Answer:

C

Question 6

Question Type: MultipleChoice

Which of the following Element Types is it possible to read an image from?

1. win32
2. Active Accessibility
3. HTML
4. Java

Options:

A- 1 only

B- 2 only

C- All of the above

D- None of the above

Answer:

B

Question 7

Question Type: MultipleChoice

When using Surface Automation which of the following is a valid Action within a Read Stage to read a numeric value from a field which has been identified as a Region?

Options:

A- Read Text

B- Read Text with OCR

C- Get Current Value

D- Get Window Attribute

Answer:

C

To Get Premium Files for APD01 Visit

<https://www.p2pexams.com/products/apd01>

For More Free Questions Visit

<https://www.p2pexams.com/blue-prism/pdf/apd01>

