



Free Questions for C2090-011 by [certsinside](#)

Shared by [Adams](#) on [29-01-2024](#)

For More Free Questions and Preparation Resources

[Check the Links on Last Page](#)

Question 1

Question Type: MultipleChoice

What happens when you use the Output option Filter out unselected cases in the Select Cases... dialog to create a filter variable and retain all cases in the same data file?

Options:

- A-** A new variable called filter? is created. Cases with a value of 1 for this variable have a slash through their row number, indicating they are not selected.
- B-** A new variable called filter I is created. Cases with a value of U for this variable have a slash through their row number, indicating they are unselected and the message Filter On appears on the status bar of the Data Editor.
- C-** A new variable called filter \$ is created. Cases with a value of 0 for this variable have a slash through their row number, indicating they are unselected and the message Filter On appears on the status bar of the Data Editor.
- D-** A new variable called filter \$ is created. Cases with a value of 1 for this variable have a slash through their row number, indicating they are unselected and the message Filter On appears on the status bar of the Data Editor.

Answer:

C

Question 2

Question Type: MultipleChoice

The table below shows statistics for two variables. True or false: all people having a valid value for the variable AGE WHEN FIRST MARRIED also have a valid value for the variable AGE OF RESPONDENT.

Descriptive Statistics

	N	Mean
AGE OF RESPONDENT	1601	46.04
AGE WHEN FIRST MARRIED	1294	22.74
Valid N (listwise)	1291	

Options:

A- True

B- False

Answer:

B

Question 3

Question Type: MultipleChoice

Which operation does this Identify Duplicate Cases dialog not perform?

Identify Duplicate Cases

Define matching cases by:

- CUSTID

Sort within matching groups by:

- TRAVDATE (A)

Sort

Ascending

Descending

Number of matching and sorting variables: 2

Variables to Create

Indicator of primary cases (1=unique or primary, 0=duplicate)

Last case in each group is primary Name: PrimaryLast

First case in each group is primary

Filter by indicator values

Sequential count of matching case in each group (0=nonmatching case) Name: MatchSequence

Move matching cases to the top of the file

Display frequencies for created variables

OK Paste Reset Cancel Help

Options:

- A- Identify duplicate cases with the same CUSTID number
- B- Sort in ascending order duplicate cases within CUSTID by the date of travel (TRAVDATE)
- C- Create a new variable PrimaryLast in the dataset
- D- Assign the value 1 to PrimaryLast for the duplicate case with the earliest travel date

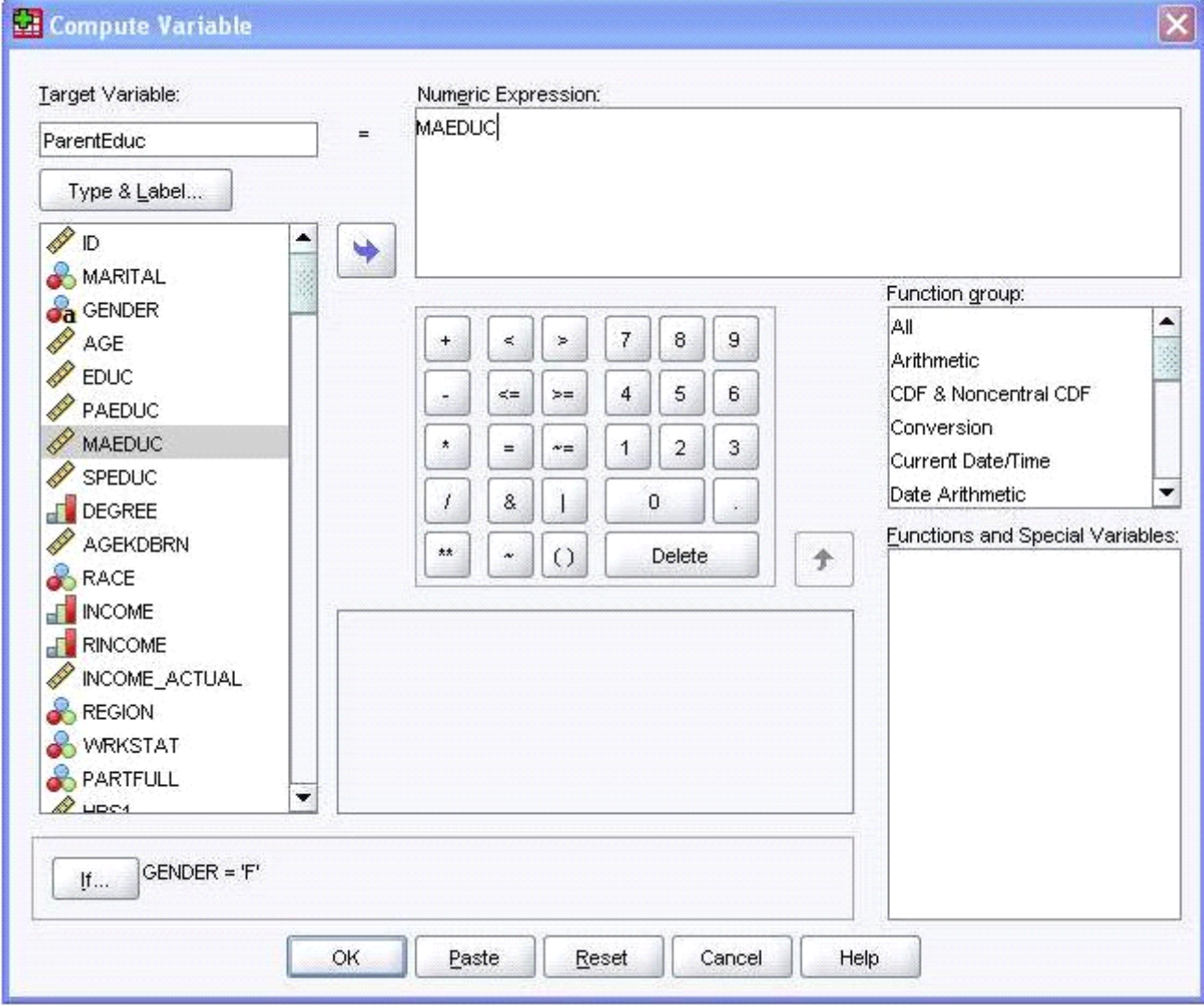
Answer:

D

Question 4

Question Type: MultipleChoice

The Compute Variable dialog shown below performs which of the following operations? (Choose two.)



Options:

- A- Sets the value of ParentEduc equal to the value of MAEDUC
- B- Sets the value of ParentEduc equal to the value of MAEDUC if the value of GENDER is F
- C- Sets the value of ParentEduc equal to the system-missing value if the value of GENDER is blank.
- D- Sets the value of ParentEduc equal to the user-missing value if the value of GENDER is blank.

Answer:

B, C

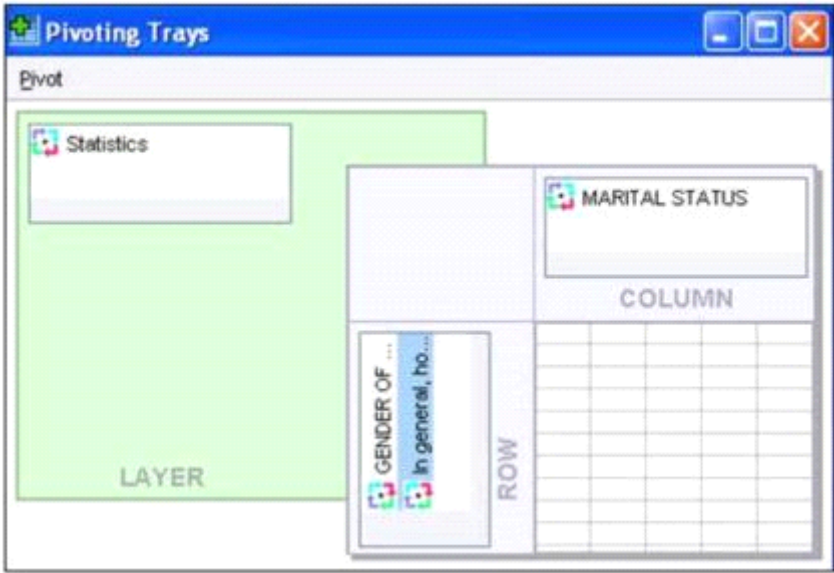
Question 5

Question Type: MultipleChoice

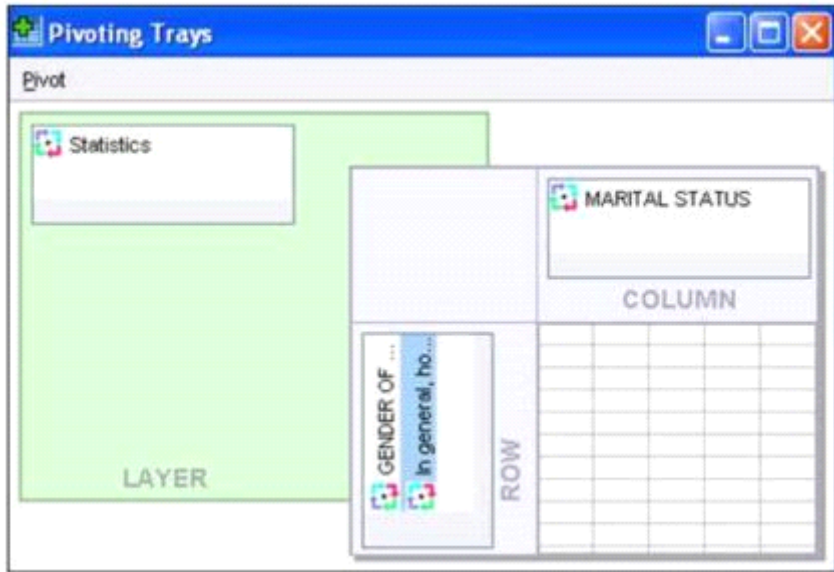
Which Pivoting Tray corresponds to the illustrated cross tabulation?

Options:

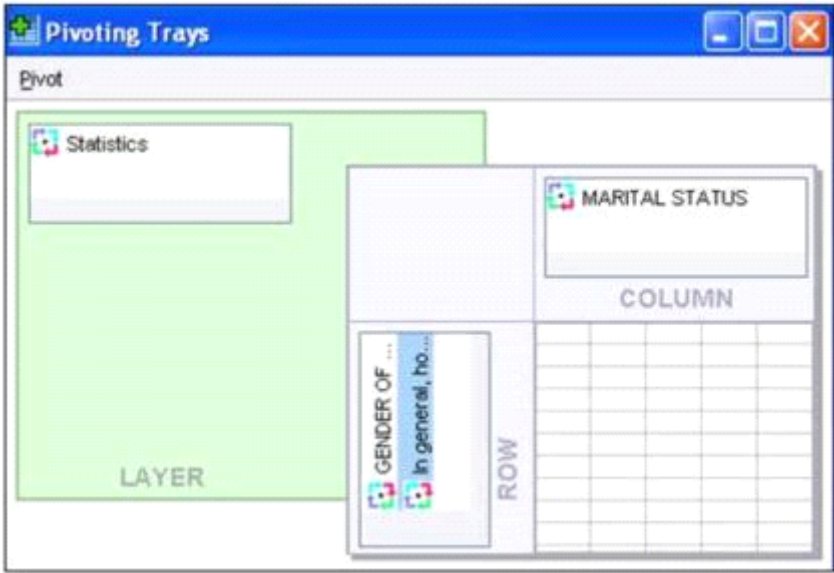
- A- Option A



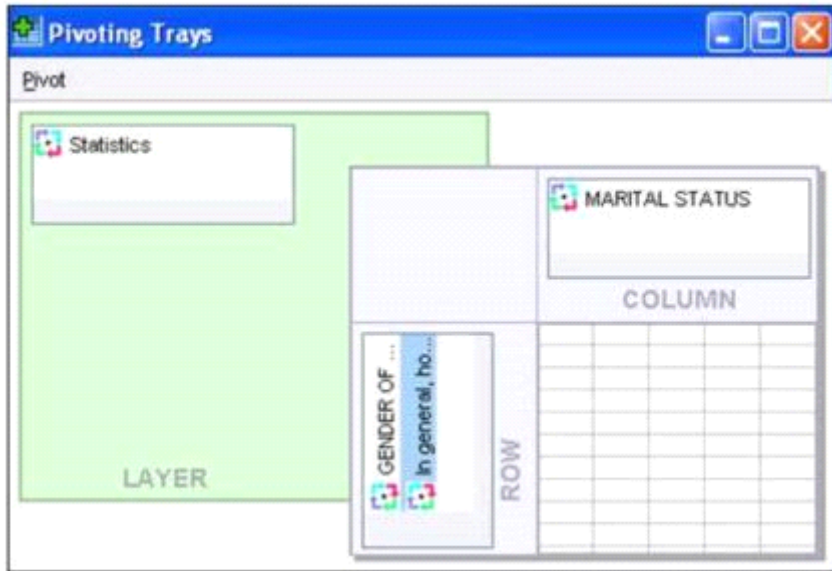
B- Option B



C- Option C



D- Option D



Answer:

C

Question 6

Question Type: MultipleChoice

Suppose you want to get help on the Cumulative Percent column in a FREQUENCIES table. Using the figure below, how would you do it?

HAPPINESS OF MARRIAGE

		Frequency	Percent	Valid Percent	Cumulative Percent
Valid	VERY HAPPY	528	32.9	61.9	61.9
	PRETTY HAPPY	300	18.7	35.2	97.1
	NOT TOO HAPPY	25	1.6	2.9	100.0
	Total	853	53.1	100.0	
Missing	REFUSED TO ANSWER	8	.5		
	System	744	46.4		
	Total	752	46.9		
Total		1605	100.0		

Options:

- A-** Go to Help ... Topics and search for Cumulative Percent.
- B-** Go to Help ... Command Syntax Reference and search for Cumulative Percent.
- C-** Go to Help ... About.
- D-** Double-click the table, right-click Cumulative Percent and select What's this? from the pop-up menu.

Answer:

D

Question 7

Question Type: MultipleChoice

Which feature would you use to create a new variable whose values represent the number of times that each respondent answered Strongly Agree to a series of satisfaction questions?

Options:

- A- Compute Variable
- B- Visual Binning
- C- Count Values within Cases
- D- Rank Cases

Answer:

C

Question 8

Question Type: MultipleChoice

What information is contained in the journal file?

Options:

- A-** Information relating to the IBM SPSS Statistics data file you are working with
- B-** Information relating to the IBM SPSS Statistics data file you are working with and any output created
- C-** Syntax from all operations relating to manipulating variables
- D-** Syntax from actions taken in dialog boxes or from running commands from the Syntax Editor

Answer:

D

Question 9

Question Type: MultipleChoice

Consider two variables, my_income and my_spouses_income, in the dataset below. You created a third variable, total_income using the Compute Variable dialog and the following expression: total_income = my_income + my_spouses_income. True or false: the value for the 3rd case will be a system-missing value.

5: my_spouses_income Visible: 2 of 2 Variables

	my_income	my_spouses_income
1	25000.00	42000.00
2	42000.00	28000.00
3	75000.00	

Data View Variable View

PASW Statistics Processor is ready

Options:

A- True

B- False

Answer:

A

Question 10

Question Type: MultipleChoice

If you build an expression manually, as opposed to using a function (e.g., specify $(V1+V2)/2$ instead of $MEAN(V1, V2)$), which statement is true?

Options:

- A-** If any of the variables used in the expression has a missing value, it will be ignored and the expression will proceed to evaluate with variables that have valid values.
- B-** It will always return a valid value for each case, regardless of whether one or more of the source variable values are missing.
- C-** If any of the variables used in the expression has a missing value, the result for that case is a system-missing value.
- D-** If any of the variables used in the expression has a missing value, you will get a notification pointing this out before you proceed.

Answer:

C

Question 11

Question Type: MultipleChoice

The Merge Files facility is located under which menu?

Options:

A- View

B- Transform

C- Analyze

D- Data

Answer:

D

To Get Premium Files for C2090-011 Visit

<https://www.p2pexams.com/products/c2090-011>

For More Free Questions Visit

<https://www.p2pexams.com/ibm/pdf/c2090-011>

