



Free Questions for ICDL-Net by [certsinside](#)

Shared by [Mckinney](#) on [12-12-2023](#)

For More Free Questions and Preparation Resources

[Check the Links on Last Page](#)

Question 1

Question Type: MultipleChoice

Which two of the following statements, about organising your e-mail within most popular e-mail applications, are true?

Options:

- A- You need to create folders before you can send or receive e-mail.
- B- You must read e-mail before you can organize it into folders
- C- You can use cut-and-paste to move mail to different folders.
- D- You must open an e-mail before you can duplicate it.
- E- E-mail messages can be sorted alphabetically inside a folder

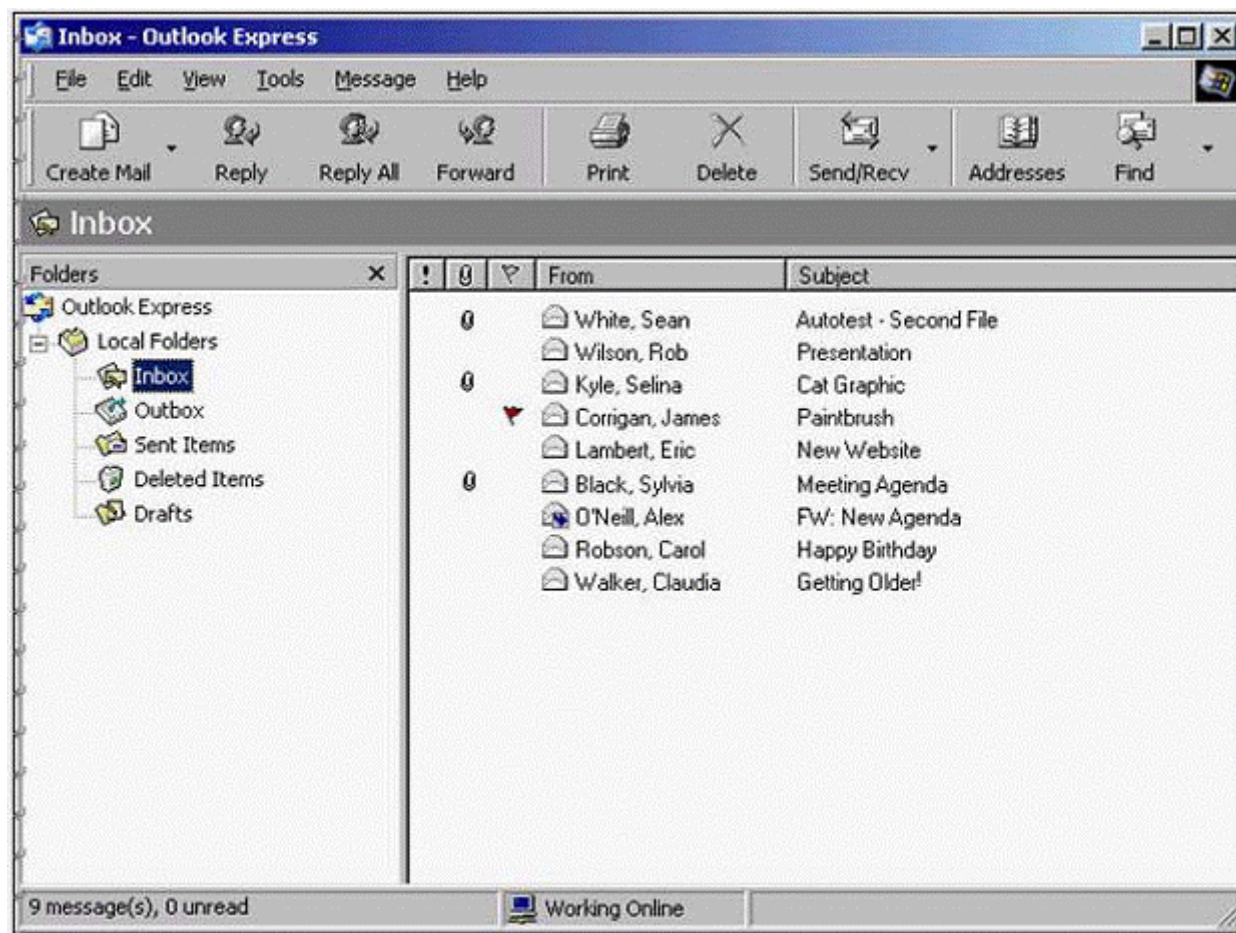
Answer:

B, E

Question 2

Question Type: MultipleChoice

Reply to everyone that received Sean White's e-mail with the message Can you call me about this? Do not open the message.



Send the message immediately when you have finished.

Options:

A- Select the Sean White's message -> click on reply all -> type Can you call me about this -> Click send

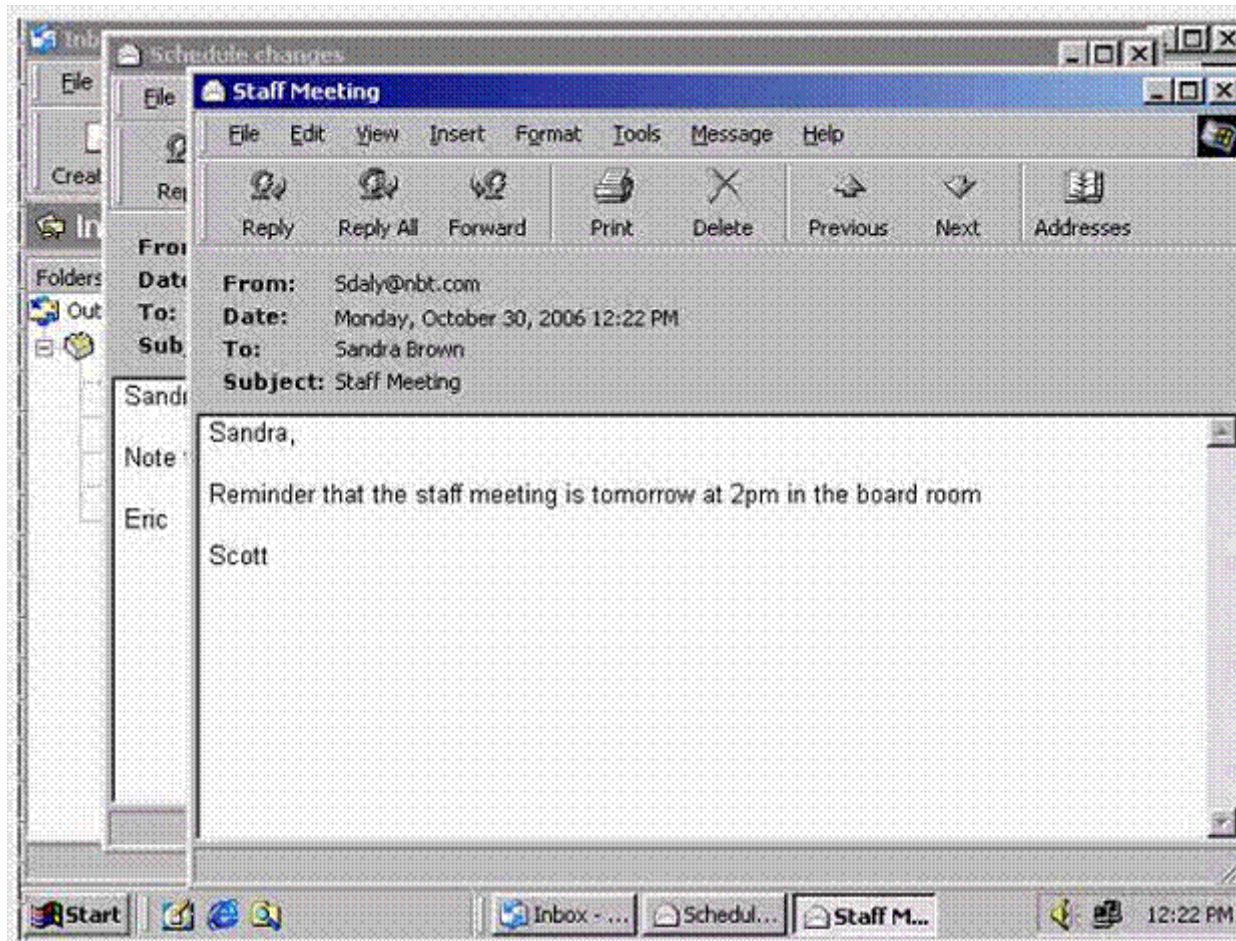
Answer:

A

Question 3

Question Type: MultipleChoice

Make the other open e-mail, Schedule changes, the active e-mail.



Options:

- A- Select the Schedule changes from the task bar

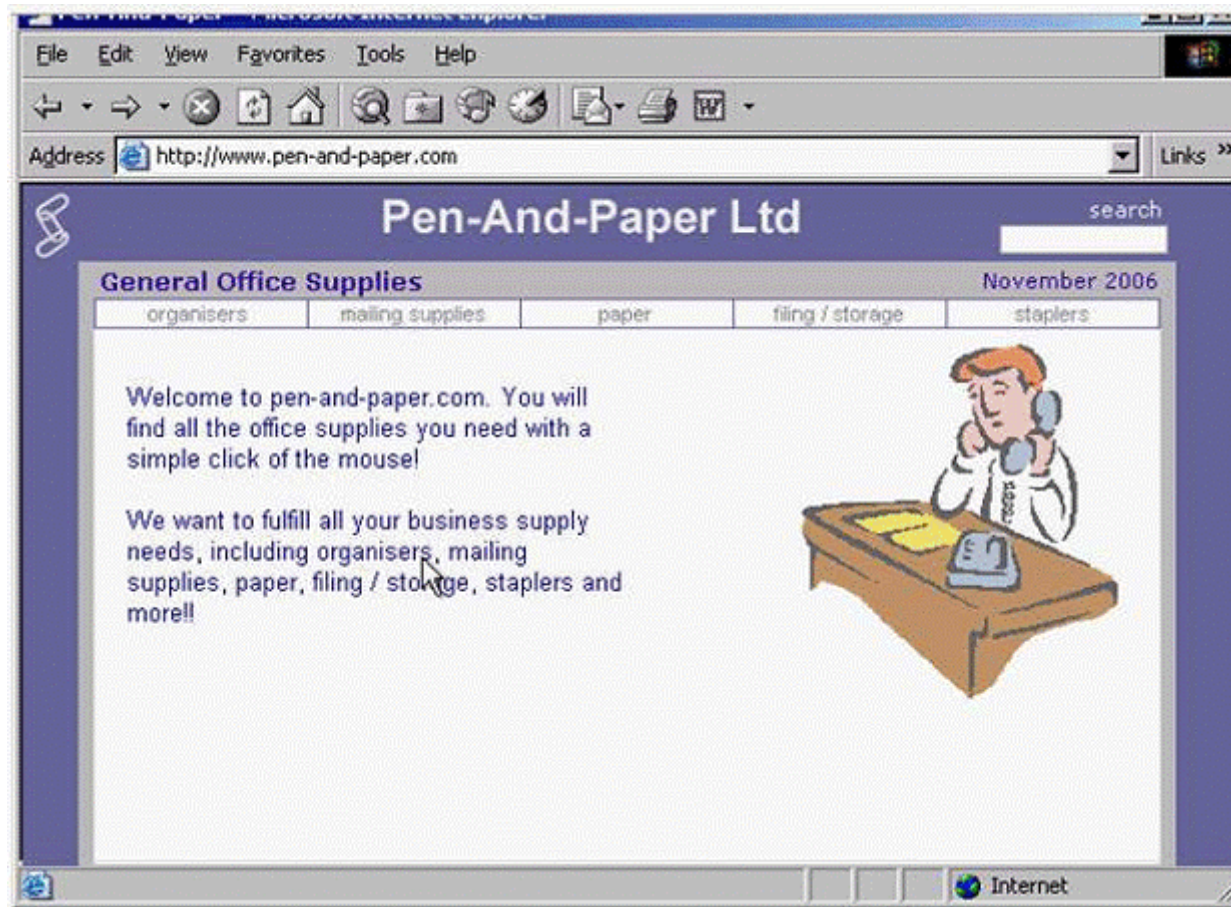
Answer:

A

Question 4

Question Type: MultipleChoice

Clear this browser's entire History list. Do not use the History Bar to carry out this task.



Options:

A- Tools -> internet options -> click on clear history

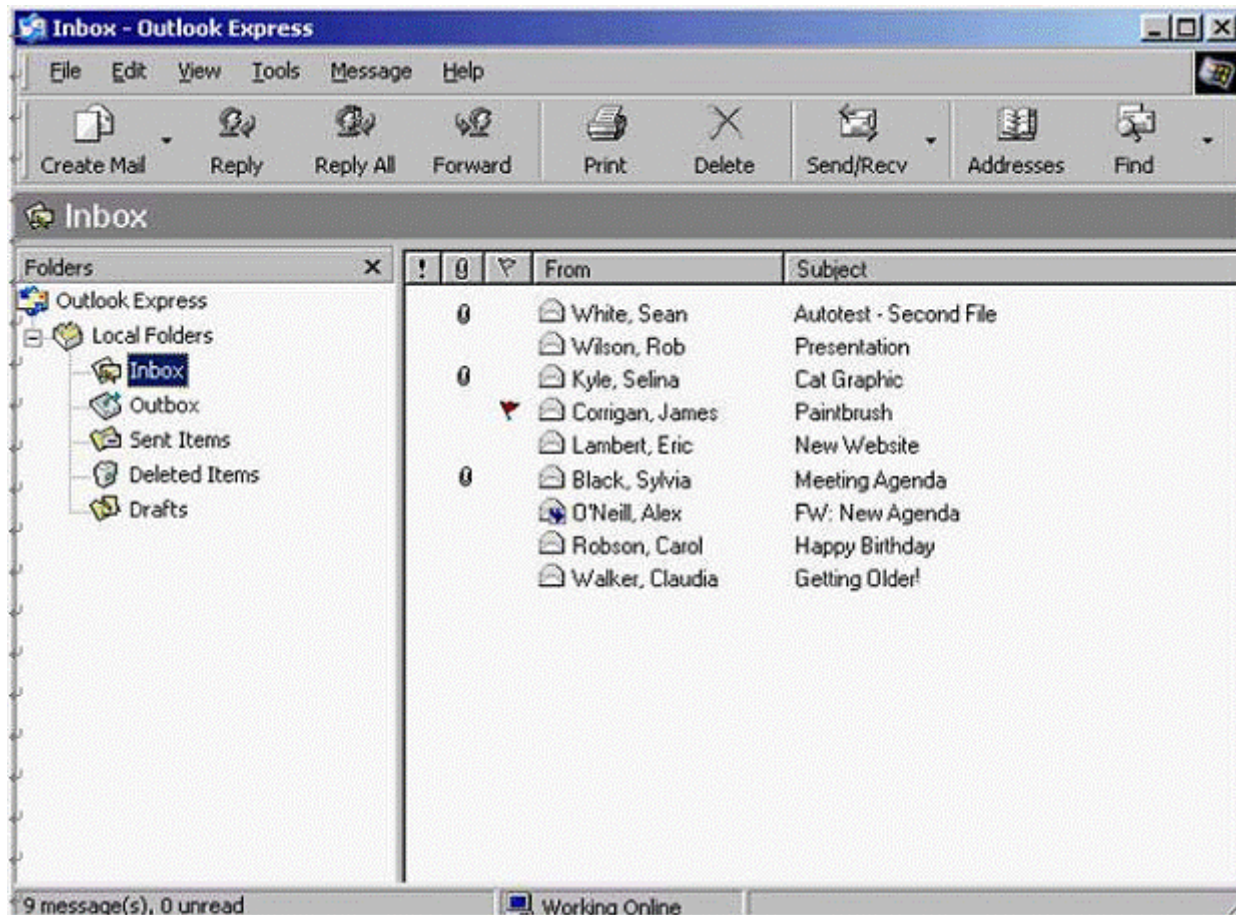
Answer:

A

Question 5

Question Type: MultipleChoice

Move the e-mail message from James Corrigan to the Drafts folder.



Options:

A- Select the message from James Corrigan and drag it to drafts

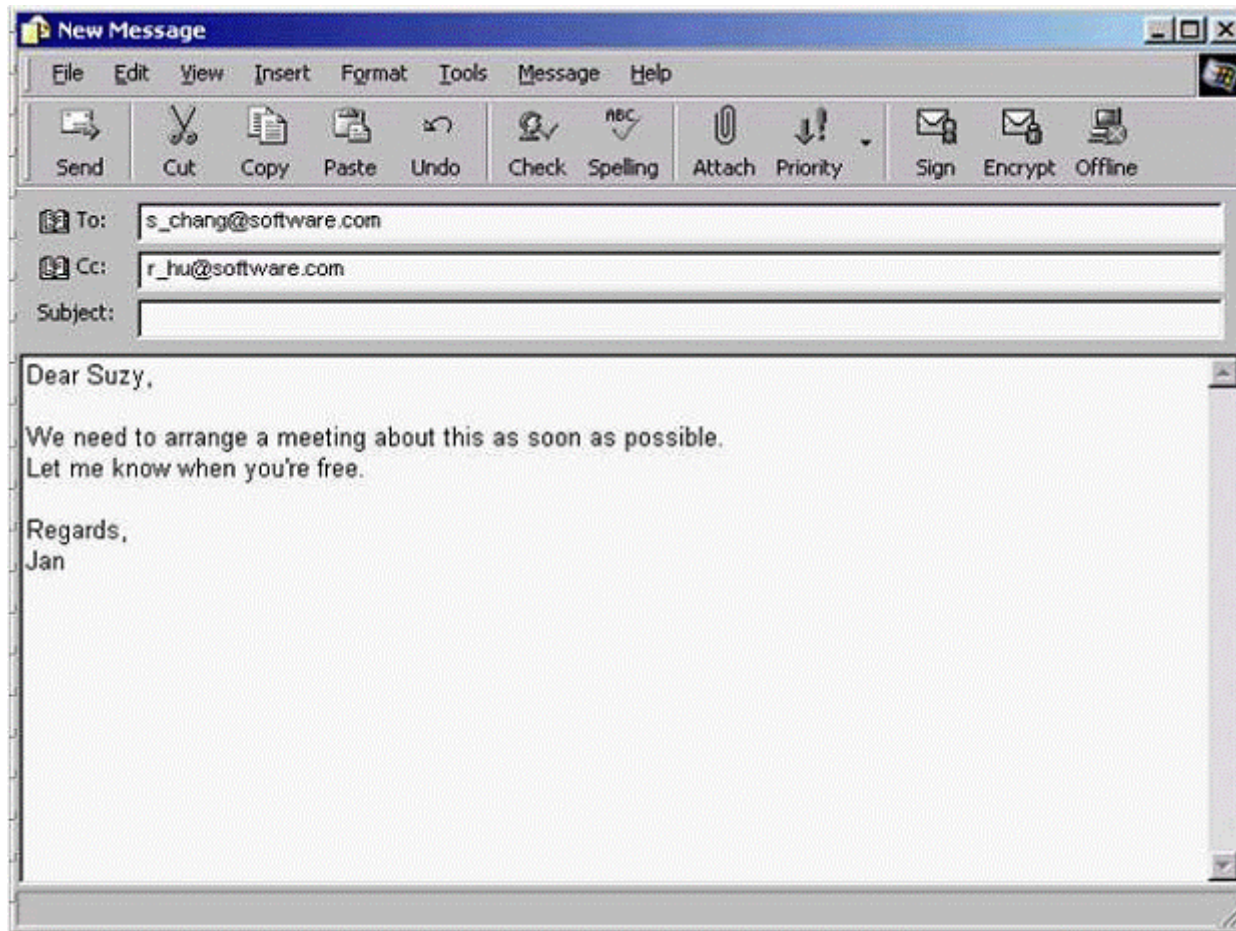
Answer:

A

Question 6

Question Type: MultipleChoice

Enter the phrase Company meeting into the appropriate field to indicate what the message is about.



Send the message when you have finished.

Options:

A- In the subject box type Company meeting -> click send

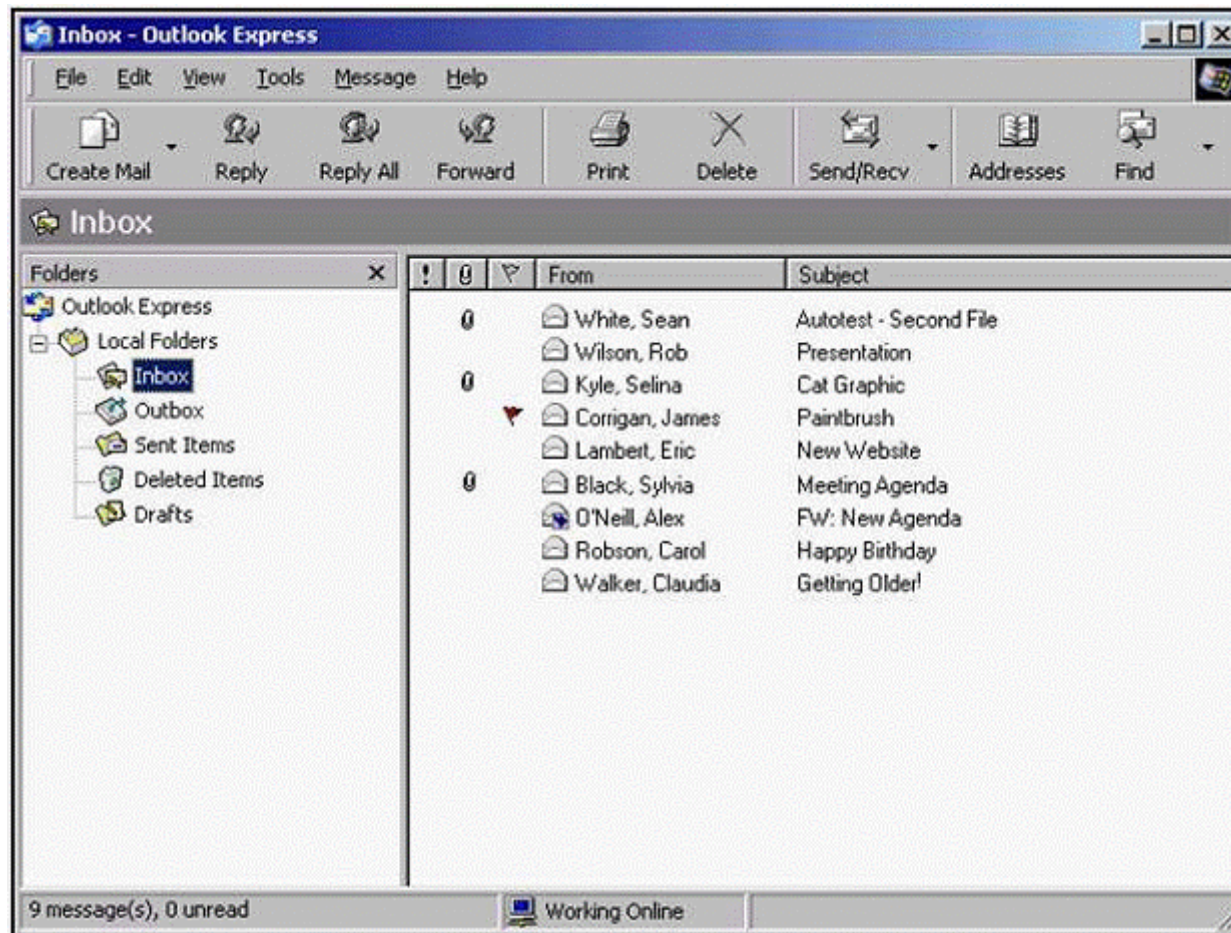
Answer:

A

Question 7

Question Type: MultipleChoice

Mark the message from Rob Wilson as Unread.



Options:

A- Right click on Rob Wilson -> select mark as unread

Answer:

A

Question 8

Question Type: MultipleChoice

Which one of these statements about e-mail is true?

Options:

- A-** You can only access one e-mail account at any time.
- B-** Each user can only access their e-mail account from a single PC.
- C-** You need a user name and password to access your e-mail
- D-** Email accounts on a single PC share the same folders.

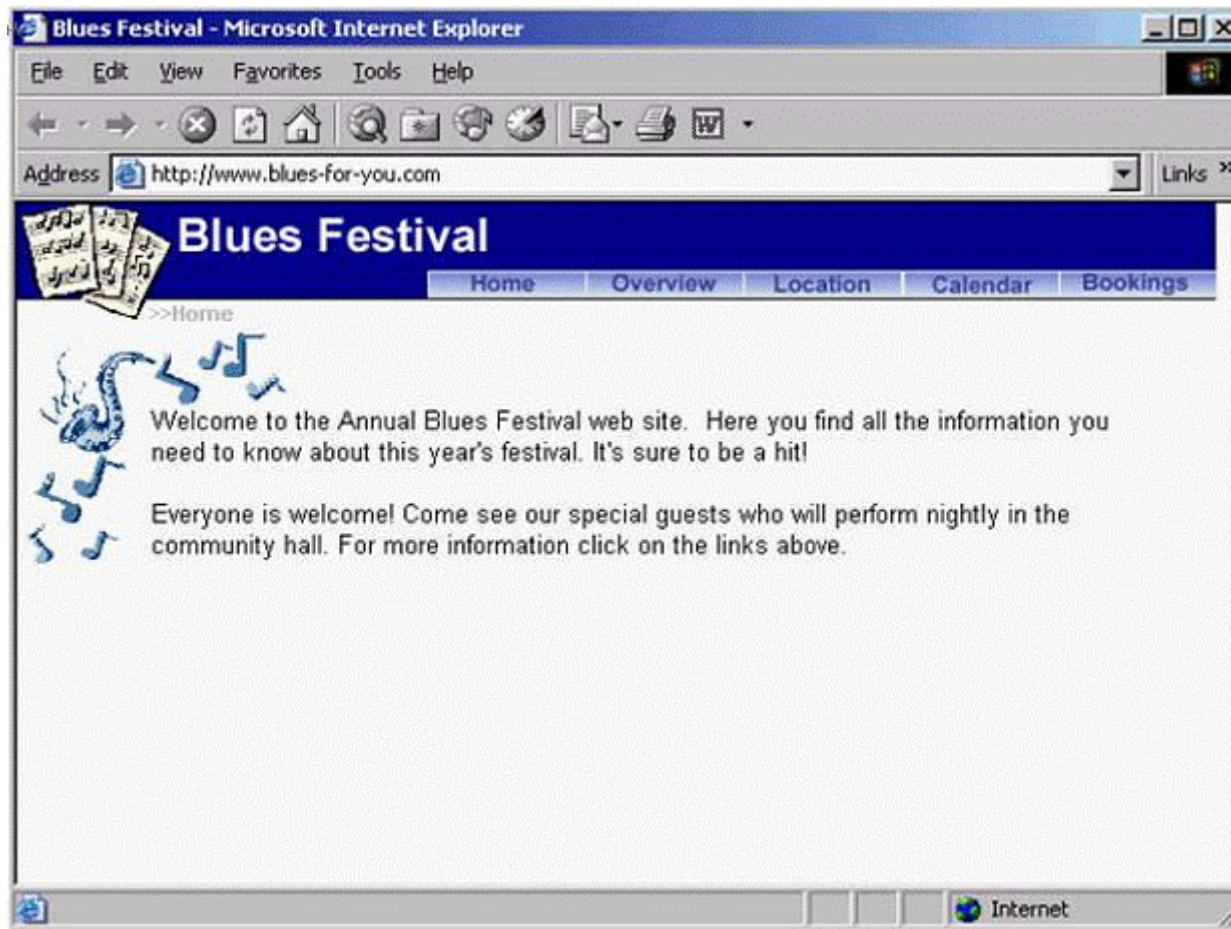
Answer:

C

Question 9

Question Type: MultipleChoice

Use this site to reserve a single room at the Park's Inn. Follow the instructions that are provided on the web page.



Options:

A- Click on Bookings -> click on the rooms/Accommodation -> from the first drop down list select Park's Inn -> from the second drop down list select single room -> click book now

Answer:

A

Question 10

Question Type: MultipleChoice

Which two of these statements regarding the risk of transmitting viruses via e-mail are true?

Options:

A- Viruses can only be transmitted via an e-mail attachment.

B- A virus can spread via e-mail by mailing itself to everyone in a victim's address book

- C- Viruses are only spread via unsolicited mail.
- D- You should not open e-mail if it has a suspicious subject line
- E- You are more at risk from viruses if you use Web based e-mail.

Answer:

B, D

Question 11

Question Type: MultipleChoice

Which two of these statements about e-mail are true?

Options:

- A- You must send and receive e-mail on separate telephone lines.
- B- E-mail stands for Electronic Mail.
- C- The cost of sending e-mail depends on where the recipient lives.
- D- You can only send or receive e-mail offline.

E- The distance over which e-mail is sent does not significantly affect the speed of delivery.

Answer:

B, E

To Get Premium Files for ICDL-Net Visit

<https://www.p2pexams.com/products/icdl-net>

For More Free Questions Visit

<https://www.p2pexams.com/icdl/pdf/icdl-net>

