



**Free Questions for 4A0-104 by certsinside**

**Shared by Lynch on 12-12-2023**

**For More Free Questions and Preparation Resources**

**Check the Links on Last Page**

## Question 1

---

**Question Type:** MultipleChoice

---

Which of the following about the Nokia 7750 SR sdp-ping is TRUE?

### Options:

---

- A- It tests the IGP reachability of the far-end IP address of an SDP.
- B- It tests that the MTU settings of a service are correct.
- C- It tests in-band, uni-directional or round-trip connectivity of SDPs.
- D- It tests the reachability of hosts connected to an SDP.

### Answer:

---

C

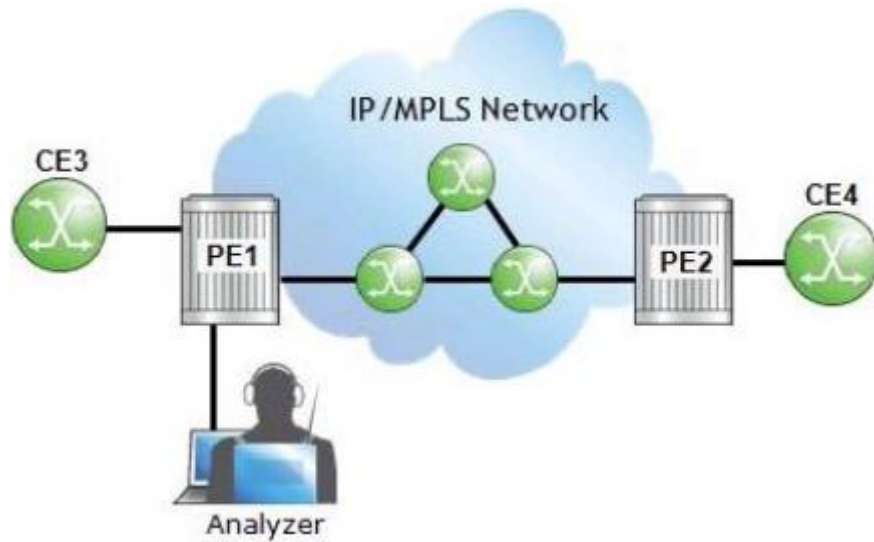
## Question 2

---

**Question Type:** MultipleChoice

---

Click the exhibit.



The operator at PE1 wants to analyze the traffic between CE4 and PE2. On an Nokia 7750 SR, which of the following is required as part of the configuration?

**Options:**

---

- A- Both PE1 and PE2 need a mirror source.
- B- PE2 needs a mirror source with the remote source specified.
- C- PE1 needs a mirror source with the remote source specified.

**D-** Both PE1 and PE2 need a mirror destination.

**E-** PE2 needs a mirror destination that specifies a SAP.

**Answer:**

---

D

## Question 3

---

**Question Type: MultipleChoice**

---

Which of the following about the lsp-ping command on the Nokia 7750 SR is FALSE?

**Options:**

---

**A-** An echo request is sent based on the LSP's label stack.

**B-** Echo reply packets may not take the same path as the LSP.

**C-** The IP destination address is used to initiate echo requests,

**D-** The test fails if the LSP is not operationally up.

**Answer:**

---

C

## Question 4

---

**Question Type: MultipleChoice**

---

A VPLS receives a frame with the single VLAN tag 35 on the Q-in-Q SAP 1/1/1:35.\*. Which of the following describes default Nokia 7750 SR behavior?

**Options:**

---

- A-** The frame is dropped.
- B-** The VLAN tag is removed, and the frame is transported over the network.
- C-** The VLAN tag is kept, and the frame is transported over the network.
- D-** The VLAN tag is kept, a VLAN of 0 is added, and the frame is transported over the network.

**Answer:**

---

B

## Question 5

---

**Question Type:** MultipleChoice

---

An SDP using GRE encapsulation is configured for an E-pipe service. The network port used by the SDP has an MTU of 8000. What value does the SDP path MTU have by default on an Nokia 7750 SR?

**Options:**

---

A- 7958

B- 7978

C- 8022

D- 8042

**Answer:**

---

A

## Question 6

---

**Question Type:** MultipleChoice

---

What Nokia 7750 SR OAM tool can be used to verify the end-to-end connectivity of a service?

**Options:**

---

A- Sdp-ping

B- Isp-ping

C- Svc-ping

D- Sdp-mtu

**Answer:**

---

C

## Question 7

---

**Question Type: MultipleChoice**

---

What happens by default on an Nokia 7750 SR when a VPLS accepts a tagged frame at the ingress SAP 1/1/1:100?

**Options:**

---

- A- The FCS is verified and kept in the customer frame. The VLAN tag is kept and transported over the network.
- B- The FCS is verified and kept in the customer frame. The VLAN tag is removed for transport over the network.
- C- The FCS is verified and removed from the frame. The VLAN tag is kept for transport over the network.
- D- The FCS is verified and removed from the frame. The VLAN tag is removed for transport over the network.

**Answer:**

---

D

## Question 8

---

**Question Type: MultipleChoice**

---

Which of the following about VPRN VRF tables is FALSE?

**Options:**

---

- A- Each VRF table contains routes for a single VPRN.



- B-** Route targets are used to determine if a prefix belongs to a VRF.
- C-** Routes in the VRF table are advertised to the core routers.
- D-** VPN labels identify which VRF table should be used for a packet.

**Answer:**

---

C

## Question 9

---

**Question Type:** MultipleChoice

---

Click the exhibit.

```
R1# show router 100 fib 1
-----
FIB Display
-----
Prefix                                     Protocol
  NextHop
-----
10.1.5.0/24                                LOCAL
  10.1.5.0 (R1-R5)
10.6.4.0/24                                BGP_VPN
  10.10.10.4 (VPRN Label:131065 Transport:LDP)
10.10.10.5/32                              BGP
  10.1.5.5 Indirect (R1-R5)
10.10.10.6/32                              BGP_VPN
  10.10.10.4 (VPRN Label:131065 Transport:LDP)
192.168.10.0/24                            BGP
  10.1.5.5 Indirect (R1-R5)
192.168.20.0/24                            BGP_VPN
  10.10.10.4 (VPRN Label:131065 Transport:LDP)
-----
Total Entries : 6
```

The output is from PE router R1 about VPRN service 100. From which protocol did router R1 learn the prefix 192.168.20.0/24?

### Options:

---

- A- LDP
- B- BGP
- C- MP-BGP
- D- MPLS

**Answer:**

---

C

## Question 10

---

**Question Type: MultipleChoice**

---

Which of the following about route distinguishes on the Nokia 7750 SR is TRUE?

**Options:**

---

- A-** Route distinguishes are used to ensure that VPRN IP prefixes are globally unique.
- B-** Route distinguishes are appended to IPv4 prefixes to form IPv6 prefixes.
- C-** Route distinguishes are used to determine which routes a VPRN should import.
- D-** CE routes use a route distinguisher to indicate which VPRN they are associated to.

**Answer:**

---

A

# Question 11

---

**Question Type:** MultipleChoice

---

Which of the following about SDPs is FALSE?

**Options:**

---

- A-** Spoke SDPs prevent loops in a VPLS.
- B-** Mesh SDPs and spoke SDPs can be used in the same VPLS.
- C-** A spoke SDP does not require the routers at both ends to be directly connected.
- D-** A mesh SDP is identical to a spoke SDP except for its flooding behavior.

**Answer:**

---

A

**To Get Premium Files for 4A0-104 Visit**

**<https://www.p2pexams.com/products/4a0-104>**

**For More Free Questions Visit**

**<https://www.p2pexams.com/nokia/pdf/4a0-104>**

