



**Free Questions for 4A0-C01 by [certsinside](#)**

**Shared by [Martin](#) on [12-12-2023](#)**

**For More Free Questions and Preparation Resources**

**[Check the Links on Last Page](#)**

## Question 1

---

**Question Type: MultipleChoice**

---

Which of the following about VPN labels is FALSE?

### Options:

---

- A- They are signaled between PE devices using MP-BGP.
- B- They are swapped at each P router as a packet crosses the service provider network.
- C- They are also known as the inner label or service label.
- D- They indicate to the egress PE the VPRN to which a packet belongs.

### Answer:

---

B

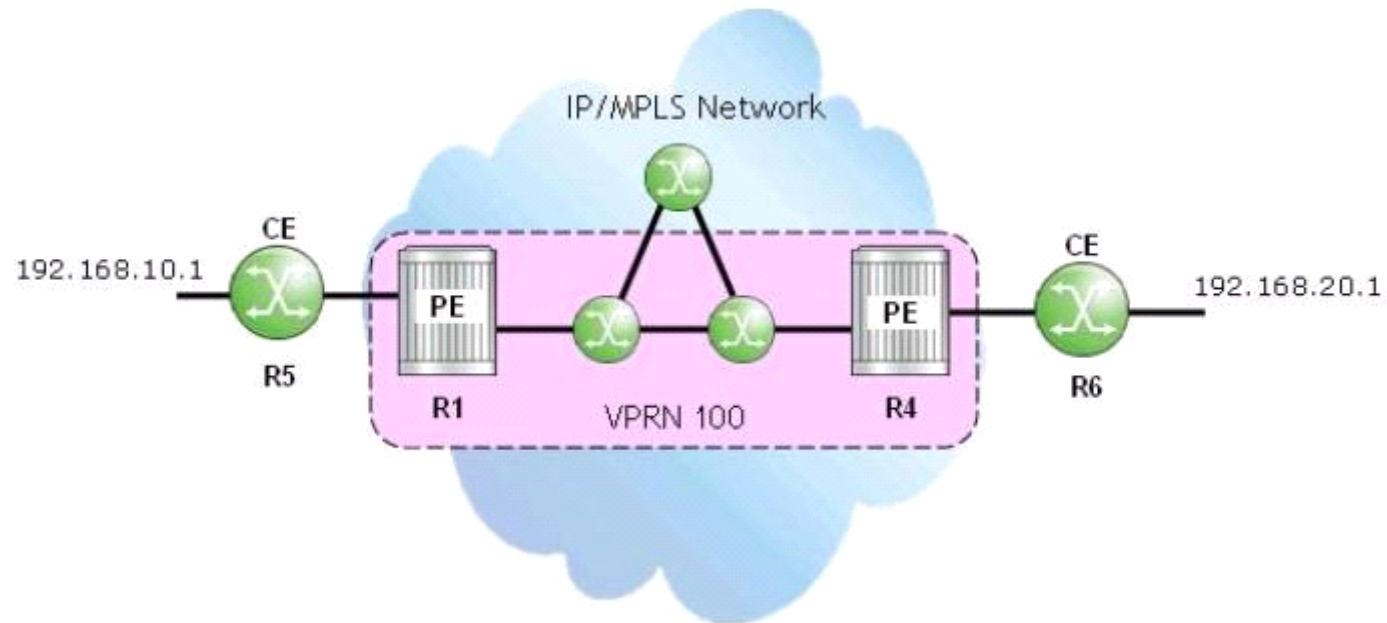
## Question 2

---

**Question Type: MultipleChoice**

---

Click the exhibit.



The CEs use BGP and export policies to advertise their local prefixes with the VPRN on their PEs. If the VPRN is functioning properly, which of the following commands will succeed when performed on router R1?

### Options:

---

A- 'ping 192.168.20.1'

B- 'oam vprn-ping 100 source 192.168.10.1 destination 192.168.20.1'

**C-** 'oam vprn-ping 100 source 192.168.20.1 destination 192.168.10.1'

**D-** 'ping 10.10.10.6' (router R6's system IP)

**Answer:**

---

B

## Question 3

---

**Question Type: MultipleChoice**

---

Which of the following is a characteristic of a VPLS?

**Options:**

---

**A-** All SAPs of a VPLS belong to the same broadcast domain.

**B-** When a new site is added, all the existing sites need to be shutdown and re-provisioned.

**C-** An additional T-LDP session is required between PEs for each additional VPLS that is provisioned.

**D-** Multiple VPLSes on the same router share a single MAC FDB.

**Answer:**

---

A

## Question 4

---

**Question Type: MultipleChoice**

---

Which of the following about ADSPEC is FALSE?

**Options:**

---

- A-** ADSPEC sets an SDP's MTU to the smallest MTU value found along the LSP path.
- B-** RSVP must be enabled on all MPLS routers of a path to use ADSPEC.
- C-** ADSPEC can automatically adjust the service MTU.
- D-** ADSPEC can be enabled on individual LSPs.

**Answer:**

---

C

## Question 5

---

**Question Type:** MultipleChoice

---

What happens by default on an Alcatel-Lucent 7750 SR when a null encapsulated SAP receives a frame with a VLAN tag?

### Options:

---

- A- The original VLAN tag is removed.
- B- The original VLAN tag is kept.
- C- The VLAN tag is replaced by a provider tag.
- D- The VLAN tag is kept and a provider tag is added.

### Answer:

---

B

## Question 6

---

**Question Type:** MultipleChoice

---

On an Alcatel-Lucent 7750 SR, which vc-type will strip service delimiting tags at the ingress PE?

**Options:**

---

**A-** vc-type ether

**B-** vc-type vlan

**C-** vc-type dot1q

**D-** vc-type null

**Answer:**

---

A

## Question 7

---

**Question Type: MultipleChoice**

---

When configuring distributed services across a network, it is considered best practice to configure which of the following parameters as globally significant?

**Options:**

---

- A- Customer ID and SAP ID.
- B- Customer ID and Service ID.
- C- SAP ID and Service ID.
- D- SDP ID and Service ID.
- E- SDP ID and SAP ID.
- F- SDP ID and VC ID.

**Answer:**

---

B

## Question 8

---

**Question Type: MultipleChoice**

---

In a Layer 2 encapsulation using T-LDP, what does the first (top) label represent?

**Options:**

---



- A- Tunnel Label
- B- VC Label
- C- Operational Control Word
- D- UNI
- E- NNI

**Answer:**

---

A

## Question 9

---

**Question Type:** MultipleChoice

---

Which of the following about SAPs is FALSE?

**Options:**

---

- A- A SAP can be associated with more than one service.
- B- A SAP is the subscriber's point of entry to the service network.

**C-** A SAP is created by specifying a physical port and an encapsulation type.

**D-** A SAP can only be created on a port configured as 'access'.

**Answer:**

---

A

## Question 10

---

**Question Type: MultipleChoice**

---

Click the exhibit.

```
A:R4# show router 100 fib 1

-----
FIB Display
-----
Prefix                                     Protocol
  NextHop
-----
10.1.5.0/24
  10.10.10.1 (VPRN Label:131067 Transport:LDP)
10.6.4.0/24
  10.6.4.0 (R4-R6)
10.10.10.5/32
  10.10.10.1 (VPRN Label:131067 Transport:LDP)
10.10.10.6/32
  10.6.4.6 Indirect (R4-R6)
192.168.10.0/24
  10.10.10.1 (VPRN Label:131067 Transport:LDP)
192.168.20.0/24
  10.6.4.6 Indirect (R4-R6)
-----
Total Entries : 6
-----
```

The output is from PE router R4 about VPRN service 100. How many prefixes have been learned from the MP-BGP protocol?

**Options:**

---

- A- 0
- B- 2
- C- 3
- D- 6

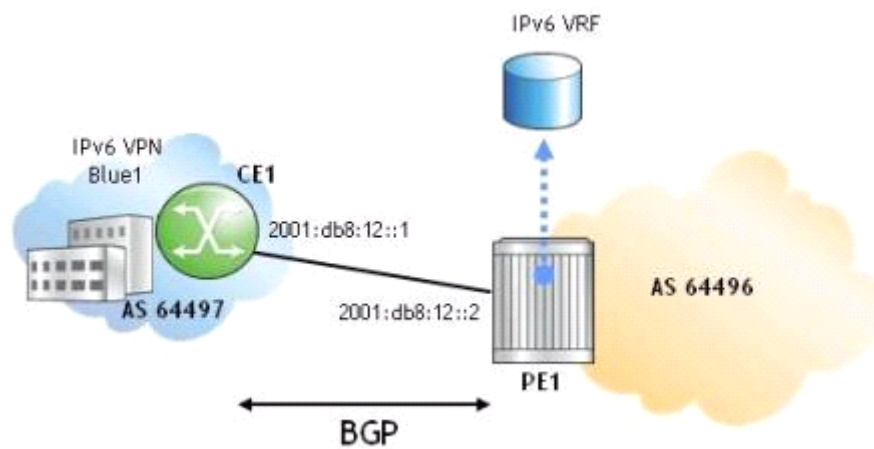
**Answer:**

C

## Question 11

**Question Type:** MultipleChoice

Click the exhibit button.



Part of a 6VPE deployment is shown. Which of the following is the correct configuration and context on router CE1 for a BGP peering session with 6VPE1?

○ A. CE1>config>service>vprn>bgp# info

```
-----  
group "to6VPE1"  
  family ipv6  
  export "direct-bgp"  
  neighbor 2001:db8:12::1  
    peer-as 64497  
  exit  
exit
```

○ B. CE1>config>service>vprn>bgp# info

```
-----  
group "to6VPE1"  
  family ipv6  
  export "direct-bgp"  
  neighbor 2001:db8:12::2  
    peer-as 64496  
  exit  
exit
```

○ C. CE1>config>router>bgp# info

```
-----  
group "to6VPE1"  
  family ipv6  
  export "direct-bgp"  
  neighbor 2001:db8:12::1  
    peer-as 64497  
  exit  
exit
```

○ D. CE1>config>router>bgp# info

```
-----  
group "to6VPE1"  
  family ipv6  
  export "direct-bgp"  
  neighbor 2001:db8:12::2  
    peer-as 64496  
  exit  
exit
```

**Options:**

---

**A-** Option A

**B-** Option B

**C-** Option C

**D-** Option D

**Answer:**

---

D

**To Get Premium Files for 4A0-C01 Visit**

**<https://www.p2pexams.com/products/4a0-c01>**

**For More Free Questions Visit**

**<https://www.p2pexams.com/nokia/pdf/4a0-c01>**

