



Free Questions for 300-420 by go4braindumps

Shared by Macias on 12-12-2023

For More Free Questions and Preparation Resources

Check the Links on Last Page

Question 1

Question Type: MultipleChoice

An engineer is designing a campus network with Cisco Catalyst 9500 switches in the aggregation layer. The design requires running nonblocking Layer 2 MEC from the aggregation layer to the access layer. The Catalyst switches are located on different campus floors for availability reasons, and each access switch vein contain a single VLAN. Which technology must the engineer choose for the aggregation switches in the design?

Options:

- A- VPC
- B- VSS
- C- StackWise Virtual
- D- StackWise-180

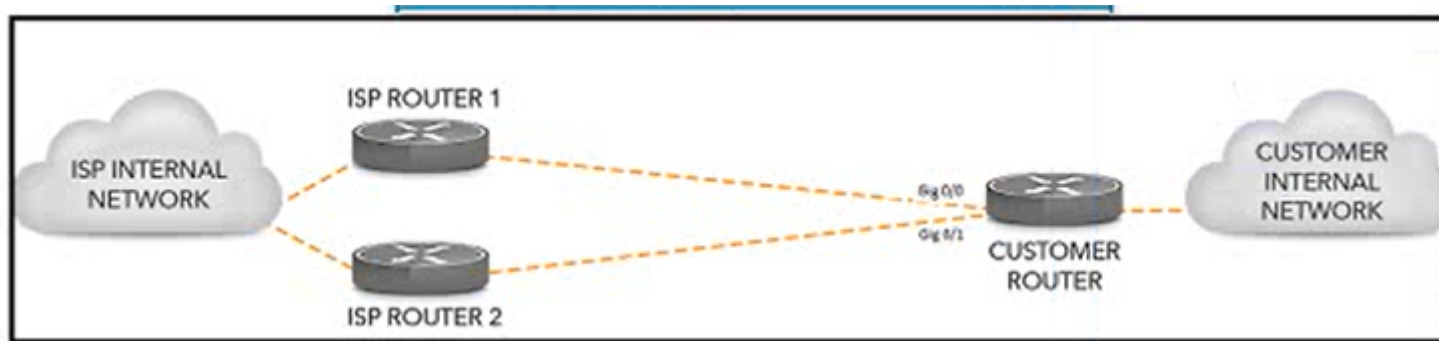
Answer:

B

Question 2

Question Type: MultipleChoice

Refer to the exhibit.



Refer to the exhibit. A customer has two eBGP peerings from a single CE router toward two service providers. The customer has hired an architect to design a solution to ensure certain traffic enters the customer's network through interface gg0/0. Which solution must the architect include in the design?

Options:

- A-** Advertise a lower MED value toward the less preferred service provider.
- B-** Prepend additional AS on the AS path toward the preferred service provider.
- C-** Break aggregated routes into longer prefixes and advertise to the preferred service provider.
- D-** Set a higher local preference to the preferred service provider path.

Answer:

A

Question 3

Question Type: MultipleChoice

An engineer is designing a WAN solution for a customer with teams in different branch locations that need to communicate. The teams also need to access enterprise applications hosted in the data center and the cloud. The customer also must provide guests with connectivity to the internet only, and the internet gateway is located in the data center. Which solution must the engineer choose?

Options:

- A-** WAN connectivity from a different service provider for guests
- B-** firewall placed in data center that filters any traffic from guests
- C-** MPLS Layer 3 VPN with one VRF for corporate access and a separate VRF for guests
- D-** MPLS Layer 3 VPN with a separate VRF for each branch location

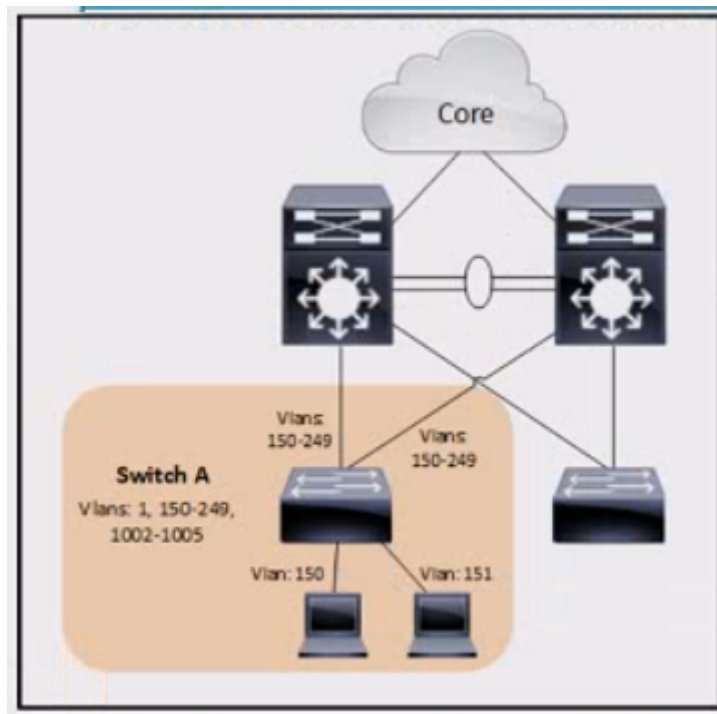
Answer:

C

Question 4

Question Type: MultipleChoice

Refer to the exhibit.



Refer to the exhibit An engineer working for a telecommunication company with an employee ID 4449:30 959 Is calculating STP scalability for switches to ensure that the numbers are below the maximum supported value for STP logical ports How many logical

interfaces are active for switch A?

Options:

A- 4

B- 307

C- 202

D- 100

Answer:

C

Question 5

Question Type: MultipleChoice

A network engineer must optimize a campus OSPF deployment. Currently, each time a type 1 or type 2 LSA is generated within an area, the OSPF process must recompute the entire SPT. Which solution improves the recomputation process?

Options:

- A- iSPF
- B- BFD
- C- SPF
- D- PRC

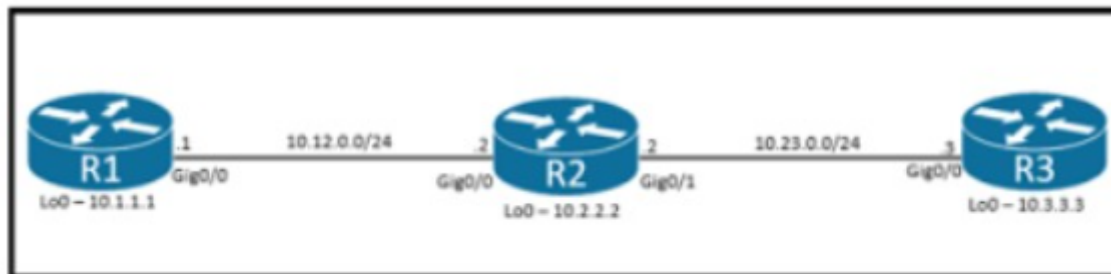
Answer:

B

Question 6

Question Type: MultipleChoice

Refer to the exhibit.



Refer to the exhibit A customer requires maximum uptime for the data plane between R1 and R3 running OSPF Which solution must the design include for high availability if the routing process on R2 requires maintenance?

Options:

- A- BFD on all routers
- B- nonstop forwarding on R1 and R3
- C- nonstop forwarding on R3 only
- D- graceful restart on all routers

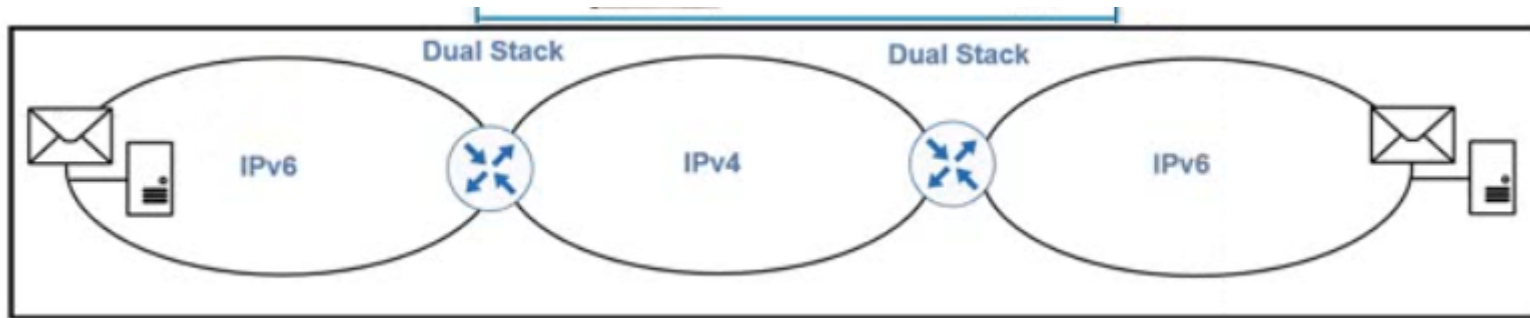
Answer:

B

Question 7

Question Type: MultipleChoice

Refer to the exhibit.



Refer to the exhibit. Which method must an architect use to provide connectivity between the mail servers?

Options:

- A- ISATAP
- B- 6to4
- C- IPv4 compaliDie
- D- 6rd

Answer:

C

Question 8

Question Type: MultipleChoice

Which protocol is deployed through LAN automation to build node-to-node underlay adjacencies in SDA?

Options:

A- IS-IS

B- OLISP

C- OSPF

D- VXLAN

Answer:

A

To Get Premium Files for 300-420 Visit

<https://www.p2pexams.com/products/300-420>

For More Free Questions Visit

<https://www.p2pexams.com/cisco/pdf/300-420>

