



Free Questions for 300-610

Shared by Tate on 24-05-2024

For More Free Questions and Preparation Resources

[Check the Links on Last Page](#)



# Question 1

---

Question Type: MultipleChoice

---

An engineer is experiencing performance issues on a cisco UCS blade server. The B-series blade server contains four CPUs, most of which are idle. The engineer notices that the CPU is suffering from too many requests sent by the NIC. Additionally, the number of queues appears to be insufficient and only a single CPU is processing the network traffic. Which policy must be used to alleviate these issues?

Options:

- A- Ethernet adapter
- B- vNIC placement
- C- LAN connectivity
- D- Dynamic vNIC connection

Answer:

---

A

Explanation:

[https://www.cisco.com/en/US/docs/unified\\_computing/ucs/sw/gui/config/guide/141/UCSM\\_GUI\\_Configuration\\_Guide\\_141\\_chapter19.html](https://www.cisco.com/en/US/docs/unified_computing/ucs/sw/gui/config/guide/141/UCSM_GUI_Configuration_Guide_141_chapter19.html)

Ethernet adapter policy is the only policy that is having configuration that is related to CPU.

# Question 2

---

Question Type: MultipleChoice

---

An end user is experiencing network latency when accessing a database in a disaster recovery site. The monitoring team concluded that the database was writing simultaneously to the storage arrays on the primary and disaster recovery sites.

Which design resolves this issue?

Options:

---

- A- asynchronous replication between data centers
- B- synchronous replication between data centers
- C- FCoE tunnel between data center
- D- FCIP tunneling between data center

Answer:

---

A

## Question 3

---

Question Type: MultipleChoice

---

A network engineer must perform a VMM integration for the VMWare vCenter platform with the Cisco ACI Fabric. The vCenter is already installed in one of the rack servers connected to ACI leaf switches in a vPC mode. Which type of management network must be used to integrate vCenter with ACI?

Options:

---

- A- ARC infra
- B- VLAN infra
- C- out-of-band management
- D- In-band management

Answer:

---

C

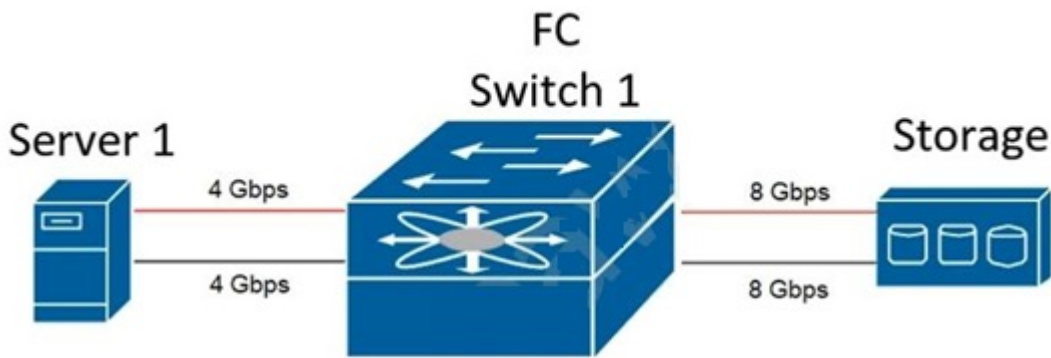
## Question 4

---

Question Type: MultipleChoice

---

Refer to the exhibit.



Server 1 fails to connect to the storage array over the Storage Area Network (SAN) of the Cisco NDS 9000 Series Switch. The requirements are to redesign the storage network and keep these considerations in mind:

The traffic from each of the server must be redundant and isolated.

The design must tolerate hardware and software failures and upgrades of SAN fabric devices.

Which action must be taken to meet these requirements?

### Options:

- A- Enable NPV and F-Port-channel on ports that face Server 1 on the Fibre Channel switch to create redundant paths.
- B- Create a SAN port channel that faces the storage device to sustain a link failure.
- C- Add an additional supervisor to the Fibre Channel switch to support nondisruptive upgrades.
- D- Place an additional Fibre Channel switch to create two physically independent storage fabrics.

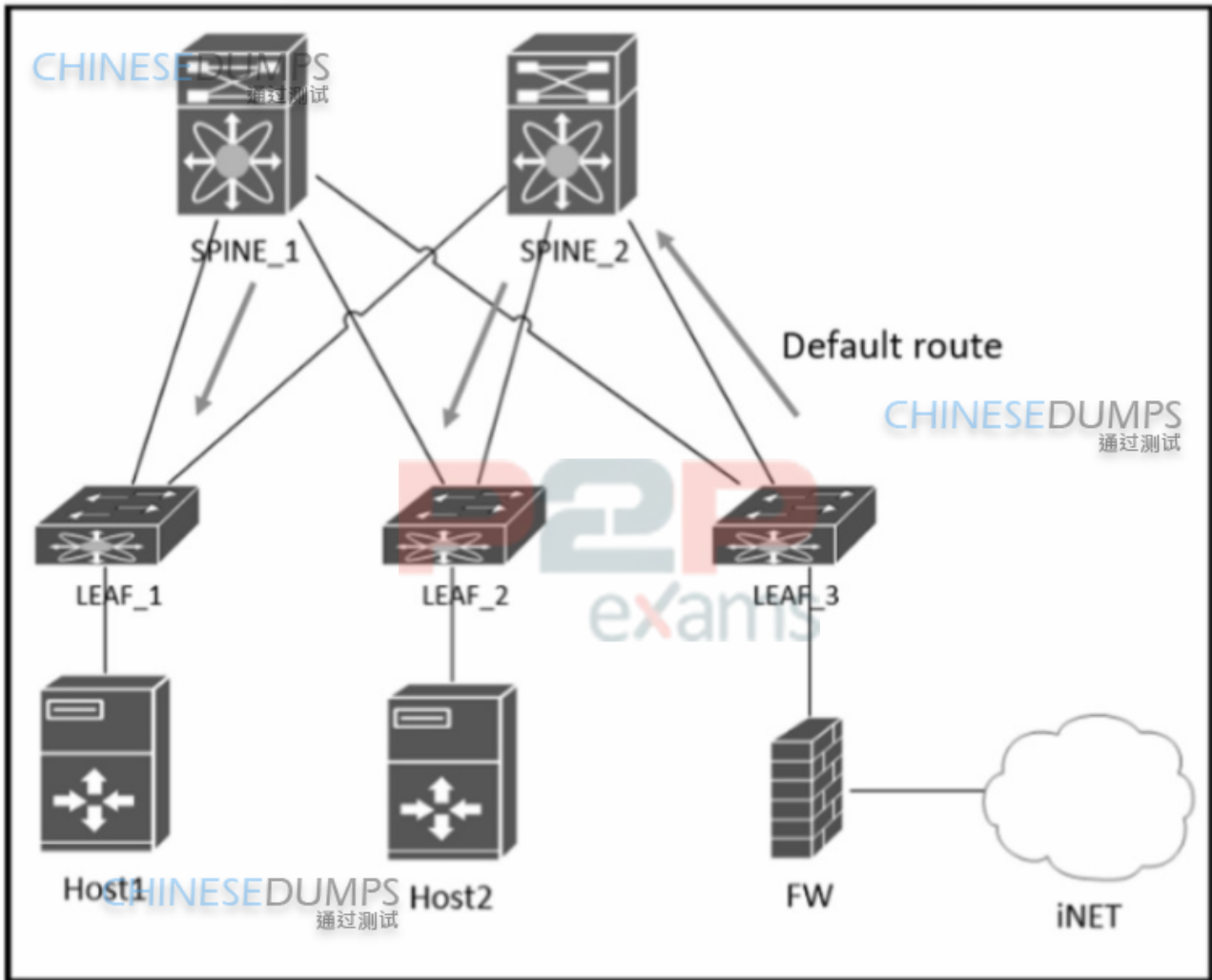
Answer:

D

## Question 5

Question Type: MultipleChoice

Refer to the exhibit.



A default route must be advertised into the VXLAN fabric for internet access. The engineer must use a static route because the edge firewall does not support any dynamic routing protocol. Which two features must the engineer use to allow learning and withdrawing of the default route without any manual intervention? (Choose two)

Options:

- A- IP forwarding
- B- HMM tracking
- C- Network Address Translation
- D- policy-based routing
- E- anycast gateway

Answer:

D, E

## Question 6

---

Question Type: MultipleChoice

---

The user traffic destined to all web servers located in the data center must pass first through a set of firewalls for deep packet inspection. A network architect must design the Cisco Intelligent Traffic Director (ITD) deployment that meets these requirements:

The firewalls are connected to a set of two Cisco Nexus switches to provide stateful handling of traffic.

The ITD service is provided for inside and outside segments of the firewall.

Which ITD deployment mode must be implemented to meet these requirements?

Options:

---

- A- server load-balancing deployment mode
- B- server vPC deployment mode
- C- one-arm deployment mode
- D- sandwich deployment mode

Answer:

---

C

## Question 7

---

Question Type: MultipleChoice

---

A cloud service provider provisioned four active/active data centers in various locations within the country at 50 miles between each data center. The data centers must provide redundant network infrastructure and always be available to customers.

Which two data center design steps must be used to meet these requirements? (Choose two.)

Options:

---

- A- Provide application hosting services to customers from the closest data center.
- B- Implement active cluster in data centers 1 and 2 and backup in 3 and 4.
- C- Use asynchronous replication between data centers 1 and 2.
- D- Deploy database services in data center 1 and application layer to other data centers.

E- Configure application data replication to all backup data centers.

Answer:

---

A, E

## Question 8

---

Question Type: MultipleChoice

---

A network engineer must select a high availability feature for their data center. The solution must ensure network resilience, reduce network instability for Layer 3 routing protocols, and meet these requirements:

The device must notify its neighbors when the control plane is undergoing a restart.

The solution must suppress routing flaps in case of stateful switchovers.

Which solution must be implemented?

Options:

---

- A- BFD
- B- HSRP
- C- NSF
- D- ISSU

Answer:

---

C

## Question 9

---

Question Type: MultipleChoice

---

A network engineer must create a Fibre Channel fabric QoS design for an existing data center. The solution must provide relative bandwidth guarantees to application traffic, control latency, and prioritize application traffic.

Which mechanism must be deployed to support these requirements?

Options:

---

- A- traffic policing
- B- traffic shaping
- C- traffic remarking
- D- traffic classification

Answer:

---

C





To Get Premium Files for 300-610 Visit

<https://www.p2pexams.com/products/300-610>

For More Free Questions Visit

<https://www.p2pexams.com/cisco/pdf/300-610>

**20%**  
**DISCOUNT**

**P2P**  
exams