



**Free Questions for 300-615 by certsdeals**

**Shared by Wiggins on 12-12-2023**

**For More Free Questions and Preparation Resources**

**Check the Links on Last Page**

# Question 1

---

**Question Type:** MultipleChoice

---

Refer to the exhibit.

```
[admin@guestshell ~]$ sudo yum install docker
Loaded plugins: fastestmirror
Loading mirror speeds from cached hostfile
Could not retrieve mirrorlist http://mirrorlist.centos.org/?release=7&arch=x86_64&repo=os&infra=stock error wa
14: curl#6 - "Could not resolve host: mirrorlist.centos.org; Unknown error"
```

One of the configured repositories failed (Unknown),  
and yum doesn't have enough cached data to continue. At this point the only  
safe thing yum can do is fail. There are a few ways to work "fix" this:

1. Contact the upstream for the repository and get them to fix the problem.
2. Reconfigure the baseurl/etc. for the repository, to point to a working upstream. This is most often useful if you are using a newer distribution release than is supported by the repository (and the packages for the previous distribution release still work).
3. Disable the repository, so yum won't use it by default. Yum will then just ignore the repository until you permanently enable it again or use --enablerepo for temporary usage:

```
yum-config-manager --disable <repoid>
```

4. Configure the failing repository to be skipped, if it is unavailable. Note that yum will try to contact the repo. when it runs most commands, so will have to try and fail each time (and thus. yum will be be much slower). If it is a very temporary problem though, this is often a nice compromise:

```
yum-config-manager --save --setopt=<repoid>.skip_if_unavailable=true
```

```
Cannot find a valid baseurl for repo: base/7/x86_64
[admin@guestshell ~]$ ping mirrorlist.centos.org
ping: unknown host mirrorlist.centos.org
```

```
[admin@guestshell ~]$ cat /etc/resolv.conf
[admin@guestshell ~]$ █
```

An engineer fails to install Perl in the guest shell on a Cisco Nexus 9000 Series Switch. Which two actions must be taken in the guest shell to resolve the issue? (Choose two.)

**Options:**

---

- A- Add the DNS server and suffix.
- B- Add a default gateway and nameserver.
- C- Install the unbound resolver package using curl.
- D- Configure domain-name and nameserver under the management VRF.
- E- Export the http\_proxy and https\_proxy environment variables

**Answer:**

---

A, D

## Question 2

---

**Question Type:** MultipleChoice

---

A network engineer notices a sudden interruption to the HSRP adjacency between the switches. The packet loss is reported on the servers for which the default gateway is set as the virtual IP of the HSRP. All servers on

the VL AN can exchange ping messages. Which configuration set must be applied on the HSRP peers to resolve the adjacency issue?

**Options:**

---

- A- key 0 send-lifetime 00:00:00 Oct 01 2018 23:59:59 Sep 01 2020
- B- key 1 send-lifetime 00:00:00 Jun 01 2018 23:59:59 Sep 01 2022
- C- key1 accept-lifetime 00:00:00 Jun 01 2018 23:59:59 Sep 01 2020
- D- key 0 accept-lifetime 00:00:00 Oct 01 2018 23:59:59 Sep01 2020

**Answer:**

---

C

## Question 3

---

**Question Type: MultipleChoice**

---

The VXL AN fabric is deployed with this configuration:

The VL AN 50 interface has no IP address on VTEP1 and VTEP4.

The VLAN 100 interface has no IP address on VTEP2 and VTEP3.

nve1 interface is configured on all VTEPs.

Host A experiences timeouts when attempting to ping host B. Which set of actions allows host A to reach host B?

**Options:**

---

**A-** On VTEP1, associate VNI 30000 to Test\_Telco VRF.

On VTEP4, associate VNI 20000 to Test\_Telco VRF.

**B-** On VTEP2, associate VNI 55000 to Test Telco VRF.

On VTEP4, associate VNI 50000 to Test Telco VRF.

**C-** On VTEP1, associate VNI 50000 to Test Telco VRF. On VTEP4, associate VNI 50000 to Test Telco VRF.

**D-** On VTEP2, associate VNI 30000 to Test Telco VRF.

On VTEP4, associate VNI 20000 to Test Telco VRF.

**Answer:**

---

C

## Question 4

---

**Question Type:** MultipleChoice

---

An engineer experiences an issue presented with the Cisco ucs system. Which action resolves the issue?

**Options:**

---

- A-** Change the discovery policy backplane speed preference to 4x10G.
- B-** Connect the adapter to the fabric interconnects using a breakout cable.
- C-** Update the I/O module firmware on the Cisco UCS chassis.
- D-** Reboot the blade server and acknowledge the fault.

**Answer:**

---

A

## Question 5

---

**Question Type: MultipleChoice**

---

Refer to the exhibit.

```
N9K# show install inactive
Boot Image:
  NXOS Image: bootflash:///nxos.7.0.3.I7.3.bin

Inactive Packages:
  nxos.CSC000002_eth-n9k_ALL-1.0.0-7.0.3.I7.3.lib32_n9000

Inactive Base Packages:

N9K# show install active
Boot Image:
  NXOS Image: bootflash:///nxos.7.0.3.I7.3.1.bin

Active Packages:
  nxos.CSC000001_core-n9k_ALL-1.0.0-7.0.3.I7.3.lib32_n9000
```

After an unexpected reload of the Cisco Nexus 9000 Series Switch, the network administrator noticed that one of the Software Maintenance Upgrades (SMU) images is inactive. The engineer must ensure that the package remains active after the switch is reloaded in the future. Which action accomplishes this goal?

### Options:

---

- A- Commit the package using the install commit command.
- B- Save the running configuration after activating the package.



- C- Deactivate and uninstall the active core package.
- D- Copy the SMU package file on the bootflash.

**Answer:**

---

A

## Question 6

---

**Question Type: MultipleChoice**

---

An engineer is recovering a fabric interconnect from a failed upgrade. The engineer booted the fabric interconnect to the switch(boot)# prompt and copied all the required images. Which image must be linked to nova-sim-mgmt-nsg.O. 1.0.XXXXXXXXXX1 bin to make the management image compliant with the Cisco UCS Manager?

**Options:**

---

- A- Kickstart
- B- System
- C- UCS Manager

D- Cisco IMC

**Answer:**

---

C

## Question 7

---

**Question Type:** MultipleChoice

---

Refer to the exhibit.

```
logging console 5
!
event manager applet LOG_BGP_CHANGES
  event syslog pattern "%BGP-5-ADJCHANGE:.*"
  action 1.0 syslog msg BGP PEER HAS FLAPPED
```

Refer to the exhibit The EEM applet must generate a syslog message when a BGP adjacency flaps. This message must be displayed to the console of the switch. However, when a BGP adjacency failure is simulated, no syslog message is displayed. Which action resolves the issue?

**Options:**

---

- A- Add the event-default action statement.
- B- Modify the policy to use the snmp trap action.
- C- Adjust the policy to match an SNMP OID.
- D- Set the logging priority to Warnings.

**Answer:**

---

D

## Question 8

---

**Question Type: MultipleChoice**

---

A Cisco uCs C-Series Server powers off due to a power outage. The server should turn on when the power is restored with a fixed delay of 3 minutes. However, it remained powered off for more than 3 minutes after the engineer powered it back online. Which two actions resolve the issue (Choose two.)

**Options:**

---

- A- Configure the power-restore-policy.
- B- Configure the power restore last-state policy.
- C- Set the delay value to 180.
- D- Set the delay fixed value to 3.
- E- Configure power sync policy.

**Answer:**

---

A, C

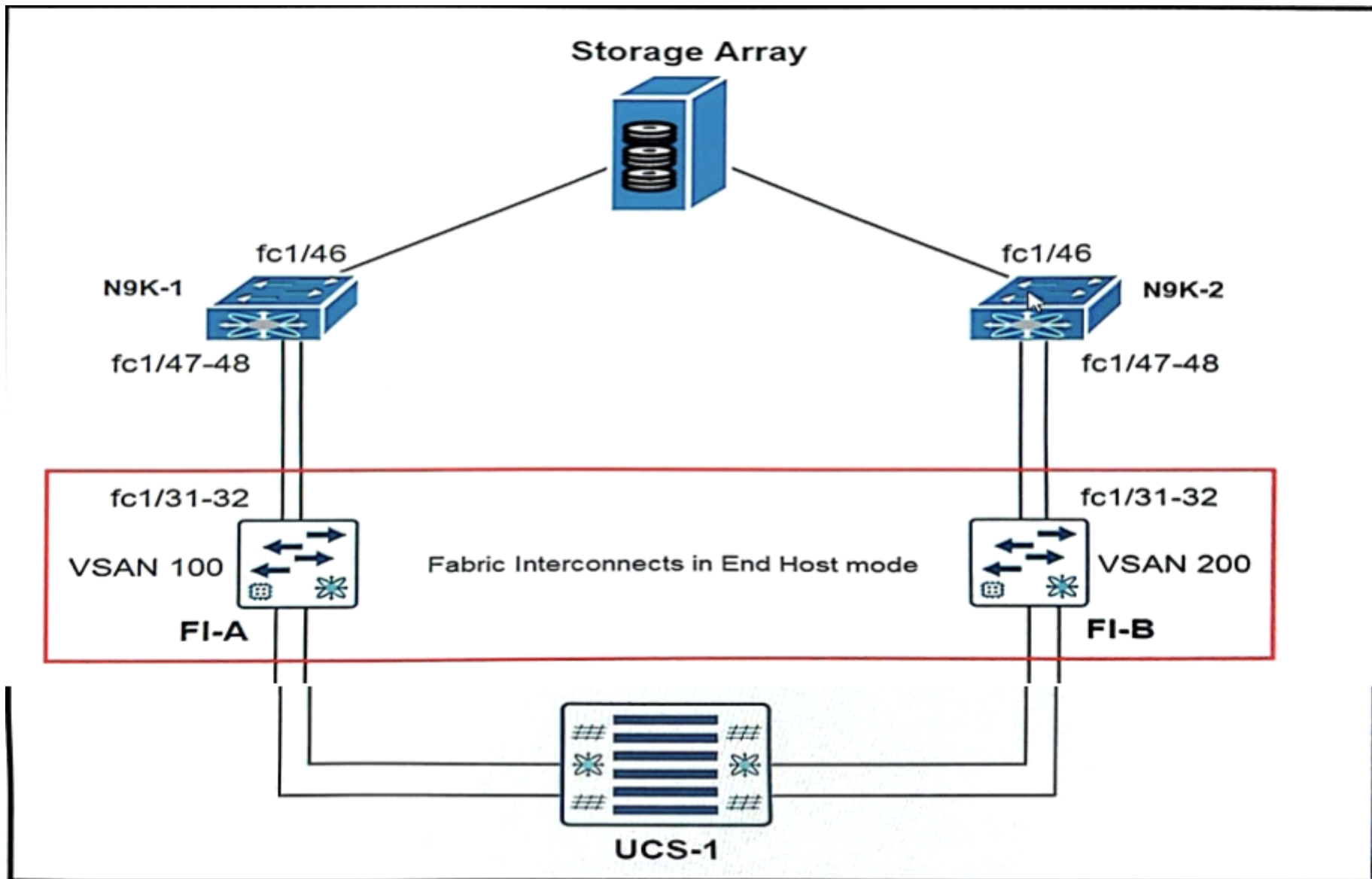
## Question 9

---

**Question Type:** MultipleChoice

---

Refer to the exhibit.



```

N9K-1#
!
feature fcoe
slot 1
  port 44-48 type fc
!
vsan database

```

```
N9K-1# show flogi database interface fc1/47-48
```

```
-----  
INTERFACE VSAN          FCID          PORT NAME          NODE NAME  
-----
```

Refer to the exhibit. UCS- 1 fails to connect to the storage array. Which action resolves the issue?

**Options:**

---

- A- Set the FI-A mode to FC End Host mode.
- B- Enable N9K-1 mode to N-Port ID Virtualization.
- C- Configure N-Port ID Virtualization on FI-A.
- D- Implement N-Port Mirtualization on N9K-1.

**Answer:**

---

B

## Question 10

---

**Question Type:** MultipleChoice

---

Refer to the exhibit.

```
vrf context BLUE
  address-family ipv4 unicast
  route-target export 65000:65000
vrf context RED
  address-family ipv4 unicast
  route-target import 65000:65000
|
interface Vlan1000
  no shutdown
  vrf member RED
  no ip redirects
  ip address 10.10.1.254/24
|
ip prefix-list RED_TO_BLUE_PL seq 5 permit 10.10.1.254/24
|
route-map RED_TO_BLUE_RM permit 10
  match ip address RED_TO_BLUE_PL
  set community 65500:65000
|
router bgp 65000
  log-neighbor-changes
  address-family ipv4 unicast
  vrf RED
    router-id 10.255.255.255
    address-family ipv4 unicast
      redistribute direct route-map RED_TO_BLUE_RM
|
```



Refer to the exhibit. The expected routes are not being leaked as expected from VRF RED to VRF BLUE. Which action resolves the issue?

**Options:**

---

- A-** Include the 'le 32' knob under the RED\_TO\_BLUE\_ACL prefix list.
- B-** Change the route targets under the VRFs.
- C-** Configure VRF BLUE under the BGP configuration.
- D-** Set the community to 65000:65000 under the route map.

**Answer:**

---

D

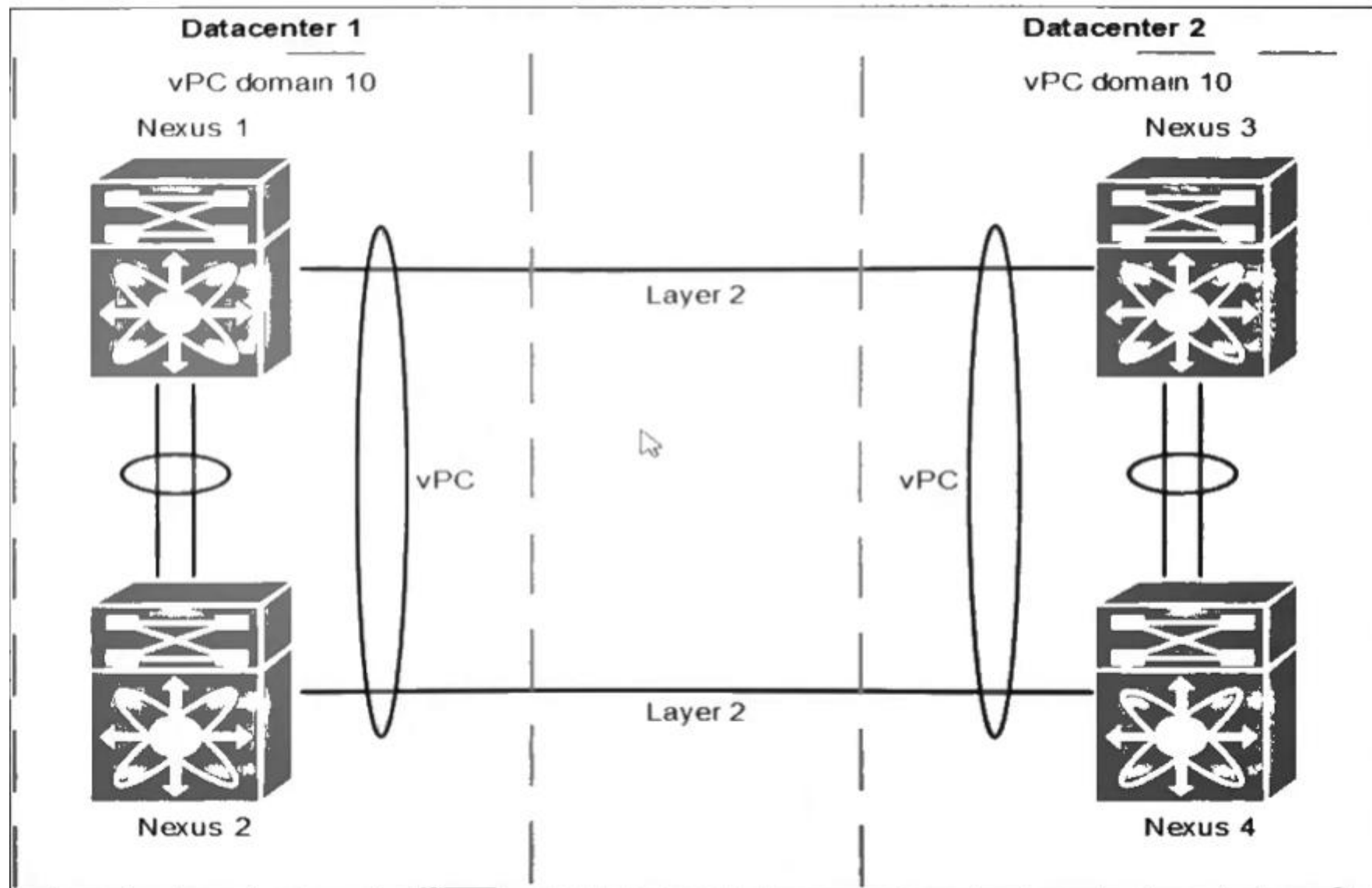
## Question 11

---

**Question Type:** MultipleChoice

---

Refer to the exhibit.



Refer to the exhibit. The administrator set up two pairs of Cisco Nexus switches. The administrator set different vPC priorities on all four Nexus switches. As soon as the administrator activates the vPC between the two pairs the network faces

different issues. The problems range from both Nexus pairs declare themselves as root bridge, as well as spanning-tree inconsistencies and traffic forwarding issues. Which action resolves these issues?

**Options:**

---

- A- Change the role priority on one pair.
- B- Configure peer-config-check-bypass on both pairs.
- C- Configure a vPC peer link between both peers.
- D- Change domain ID on one pair to a different ID.

**Answer:**

---

D

## Question 12

---

**Question Type:** MultipleChoice

---

Refer to the exhibit.

```

18 SNMP packets input
  0 Bad SNMP versions
 18 Unknown community name
  0 Illegal operation for community name supplied
  0 Encoding errors
  0 Number of requested variables
  0 Number of altered variables
  0 Get-request PDUs
  0 Get-next PDUs
  0 Set-request PDUs
  0 No such name PDU
  0 Bad value PDU
  0 Read Only PDU
  0 General errors
  0 Get Responses
  0 Unknown Context name
0 SNMP packets output
  0 Trap PDU
  0 Too big errors (Maximum packet size 1500)
  0 No such name errors
  0 Bad values errors
  0 General errors
  0 Get Requests
  0 Get Next Requests
  0 Set Requests
  0 Get Responses

```

Community	Group / Access	context	acl_filter
public	network-operator		

---

SNMP USERS

---

User	Auth	Priv(enforce)	Groups	acl_filter
admin	md5	des(no)	network-admin	

Refer to the exhibit. The monitoring team reports an inability to access the devices after a new centralized management integration. Which action resolves the issue?

**Options:**

---

- A- Modify the SNMP ACL to allow the incoming request packets.
- B- Enable SHA authentication for the admin user.
- C- Update the community string.
- D- Change the admin user permissions to write.

**Answer:**

---

C

**To Get Premium Files for 300-615 Visit**

**<https://www.p2pexams.com/products/300-615>**

**For More Free Questions Visit**

**<https://www.p2pexams.com/cisco/pdf/300-615>**

