



Free Questions for 300-615 by go4braindumps

Shared by Finch on 15-04-2024

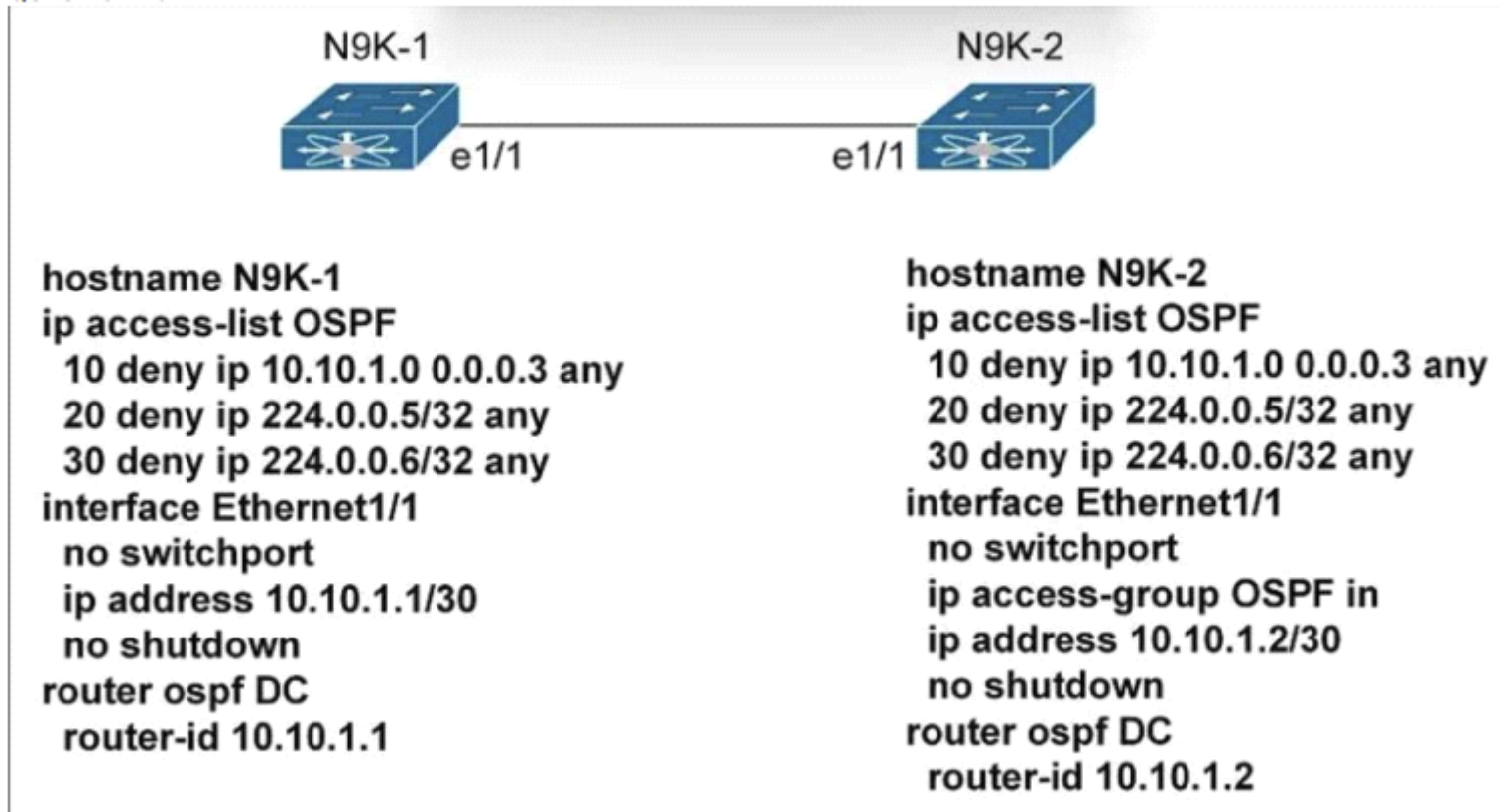
For More Free Questions and Preparation Resources

Check the Links on Last Page

Question 1

Question Type: MultipleChoice

Refer to the exhibit.



A client reports that the routing protocol neighborhood fails to start between two Cisco Nexus switches, N9K-1 and N9K-2. Which action resolves the issue?

Options:

- A- Add OSPF routing configuration to interface e1/1 on both Cisco Nexus switches
- B- Configure a unicast access list to allow the negotiation between N9K-1 and N9K-2
- C- Configure a multicast access list to allow the negotiation between N9K-1 and N9K-2
- D- Add MTU configuration to interface e1/1 on both Cisco Nexus switches

Answer:

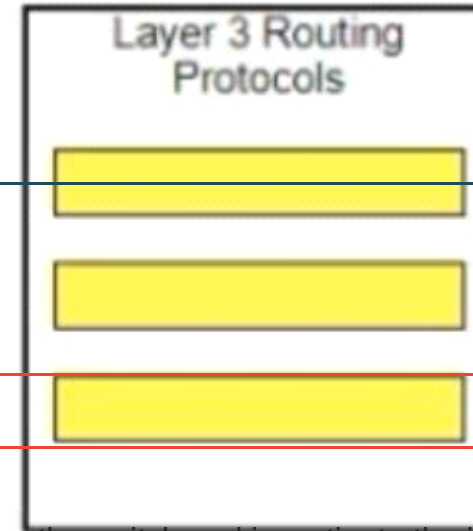
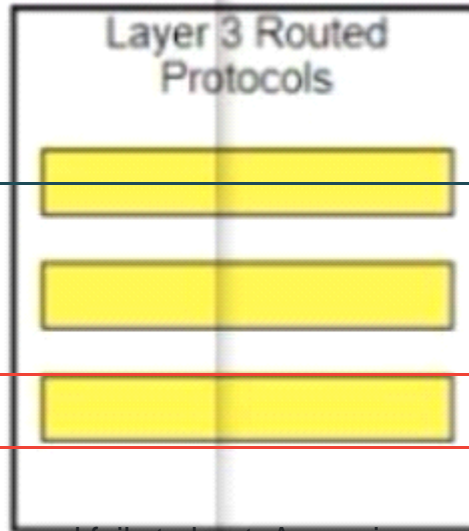
B

Question 2

Question Type: DragDrop

Drag each item listed on the left to its proper category on the right Not all items will fit the categories.

- RIP
- Answer: IGRP
- NetBEUI
- RGP
- AppleTalk
- DECnet
- IP



Question 3

Question Type: DragDrop

A Cisco Nexus 9000 Series Switch crashes and fails to boot. An engineer must recover the switch and investigate the issue. The switch uses 172.20.50.213/24 IP address for management and its default gateway is 172.20.50.254. Drag and drop the steps for recovering the Cisco Nexus 9000 Series Switch from the left onto the right. Not all steps are used.

Select and Place:

```
switch(boot)# init system
```

step 1

Answer:

```
loader> set ip 171.20.50.213 255.255.255.0
```

step 2

```
loader> boot tftp://172.22.255.16/n9000-dk9.6.1.2.I1.1.bin
```

step 3

Question 4

Question Type: MultipleChoice

```
loader> cmdline recoverymode=1
```

step 4

Refer to the exhibit.

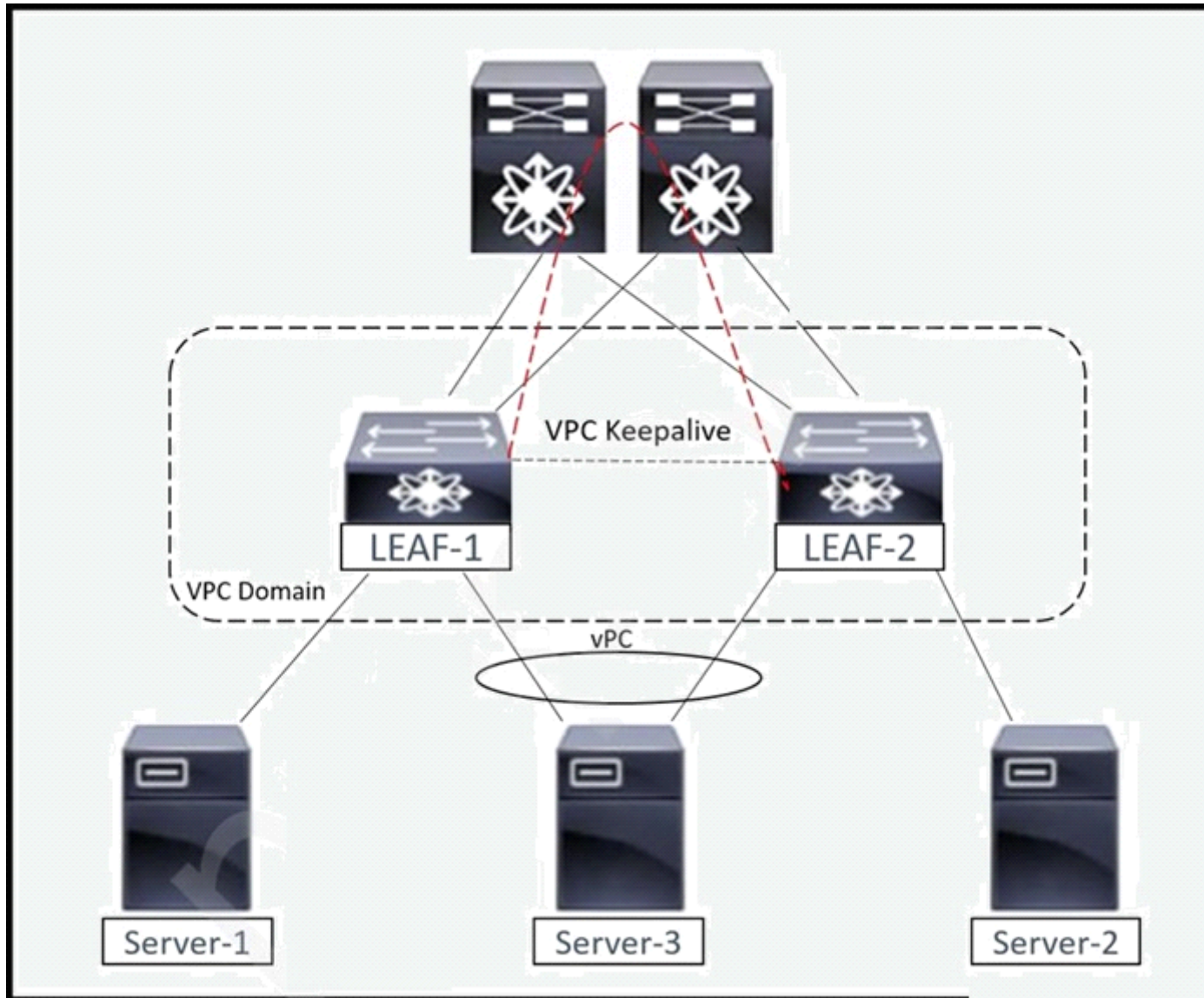
```
switch(boot)# load-nxos
```

step 5

```
loader> set gw 172.20.50.254
```

step 6

```
loader> ip address 171.20.50.213/24
```



An engineer is troubleshooting the connectivity between Server-1 and Server-2. Which action resolves the connectivity issue?

Options:

- A-** Enable BGP advertise pip feature on both leaf switches
- B-** Configure the same source IP address on NVE and virtual peer link on leaf switches
- C-** Classify CFS messages for strict priority queue on spine switches
- D-** Change all ports on spine switches as port-type fabric

Answer:

C

Question 5

Question Type: MultipleChoice

Refer to the exhibit.

Schedule Node Upgrade

Group Type: **Switch** vPod

Upgrade Group Name: DC_Lab

Target Firmware Version: aci-n900-dk9.14.2.2a.b

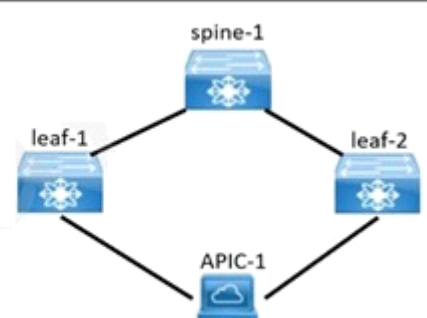
Ignore Compatibility Check:

Graceful Maintenance:

Run Mode: **Do not pause on failure and do not wait on cluster health** Pause upon upgrade failure

Upgrade Start Time: **Now** Schedule For Later

Node Selection: **Range** Manual



All Nodes

Selected	ID	Name	Role	Model	Current Firmware	Target Firmware	Status
<input checked="" type="checkbox"/>	Pod1/101	leaf-1	leaf	N9K-C9396PX	4.1(1k)	aci-n900-dk9.14.2.2a.b	Not Scheduled
<input checked="" type="checkbox"/>	Pod1/101	leaf-2	leaf	N9K-C9396PX	4.1(1k)	aci-n900-dk9.14.2.2a.b	Not Scheduled
<input checked="" type="checkbox"/>	Pod1/201	spine-1	spine	N9K-C9508	4.1(1k)	aci-n900-dk9.14.2.2a.b	Not Scheduled

A client configures an upgrade of its Cisco Nexus switches that are connected to the Cisco ACI controller, such that the switches are upgraded one at a time. After the upgrade is run, it is discovered that both Cisco Nexus switches were upgraded simultaneously. Which two actions ensure that the switches upgrade one at a time? (Choose two.)

Options:

- A- Configure the 'Do not pause on failure and do not wait on cluster health' Run Mode
- B- Choose the 'Pause upon upgrade failure' Run Mode

- C- Select the 'Graceful Maintenance' checkbox
- D- Place each leaf switch in a different upgrade group
- E- Check the Ignore Compatibility' checkbox

Answer:

C, D

Question 6

Question Type: MultipleChoice

Refer to the exhibit.

```
FI-A(nxos)# show int vfc 952
vfc952 is down (Error Disabled - VLAN L2 down on Eth interface)
Bound interface is Vethernet9155
Port description is server 1/5, VHBA fc0
Hardware is Ethernet
Port WWN is 23:c2:00:de:fb:2b:e6:ff
Admin port mode is F, trunk mode is on
snmp link state traps are enabled
Port vsan is 100
1 minute input rate 0 bits/sec, 0 bytes/sec, 0 frames/sec
1 minute output rate 0 bits/sec, 0 bytes/sec, 0 frames/sec
0 frames input, 0 bytes
0 discards, 0 errors
0 frames output, 0 bytes
0 discards, 0 errors
```

A network engineer is implementing a Cisco UCS environment. The environment consists of eight servers configured with the same service profile template and Windows 2012 installed. The VFC interfaces of five of these servers are showing the error shown in the exhibit. Which action resolves the issue?

Options:

- A- Modify the vHBAs name in the storage connectivity policy
- B- Configure upstream zoning
- C- Decommission and recommission the servers
- D- Modify the boot order in the boot policy

Answer:

C

Question 7

Question Type: MultipleChoice

Refer to the exhibit.

```
UCS-LAB-IC-1-A# connect adapter 1/1/1
adapter 1/1/1 # connect
No entry for terminal type "vt220";
using dumb terminal settings.
```

```
adapter 1/1/1 (top):1# attach-mcp
No entry for terminal type "vt220";
using dumb terminal settings.
```

```
vnic iSCSI Configuration:
```

```
-----
vnic_id: 5
```

```
    link_state: Up
```

```
    Initiator Cfg:
```

```
        initiator_state: ISCSI_INITIATOR_READY
```

```
    initiator_error_code: ISCSI_BOOT_NIC_NO_ERROR
```

```
        vlan: 0
```

```
        dhcp status: false
```

```
            IQN: iqn.2013-01.com.myserver124
```

```
            IP Addr: 10.68.68.2
```

```
            Subnet Mask: 255.255.255.0
```

```
            Gateway: 10.68.68.254
```

```
Target Cfg:
```

```
    Target Idx: 0
```

```
        State: INVALID
```

```
        Prev State: ISCSI_TARGET_GET_LUN_INFO
```

```
    Target Error: ISCSI_TARGET_GET_HBT_ERROR
```

```
        IQN: iqn.1992-08.com.netapp:sn.1111111
```

```
        IP Addr: 10.70.70.00
```

A Cisco UCS B-Series Blade Server is configured to boot from a shared storage via an iSCSI network. When a service profile is associated with the blade, the blade fails to attach the LUN. Which action resolves the issue?

Options:

- A- Place VLAN 0 on the interface that connects to the storage
- B- Register the blade as an initiator on the storage array
- C- Implement a Layer 3 connection between the blade and the storage
- D- Establish a Layer 2 connection between the blade and the storage

Answer:

A

Question 8

Question Type: MultipleChoice

Refer to the exhibit.

```
Booting kickstart image: bootflash:/nxos.7.0.3.l7.4.bin
CardIndex = 11056

Couldn't read file. Expected 392e9000 Got ffffffff
File does not exist, boot failed.

error: Vendor info. Expected 1024 Read-1

loader>
```

A network engineer upgrades the firmware of a Cisco Fabric Interconnect from boot flash. During the process, the fabric interconnect reboots and displays the message shown in the exhibit. Which action resolves the issue?

Options:

- A- Remove the service pack and upgrade through the auto-install procedure
- B- Reset the I/O module and install the firmware image from the boot flash
- C- Boot the kickstart image from boot flash and load the system image
- D- Reload the switch and boot the kickstart image from the TFTP server

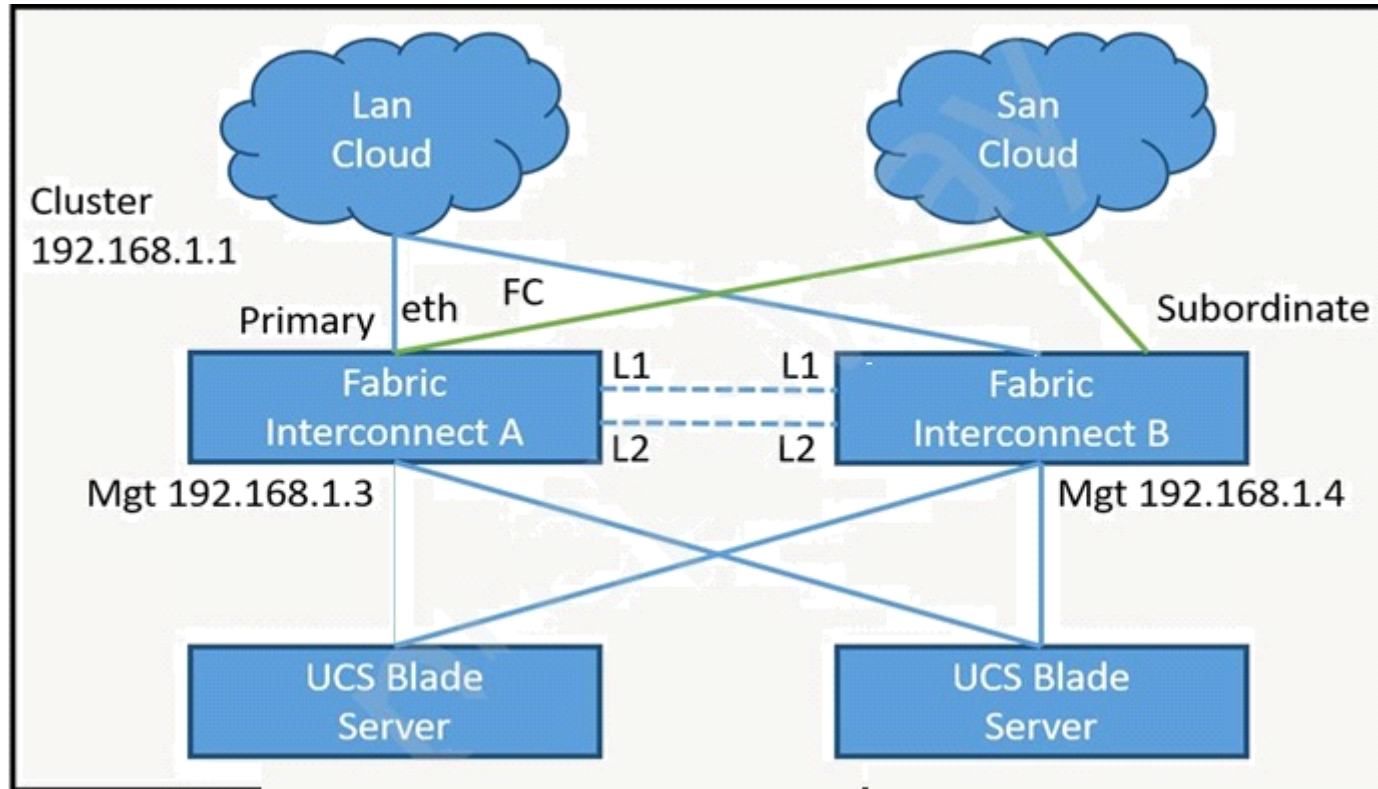
Answer:

D

Question 9

Question Type: MultipleChoice

Refer to the exhibit.



A network engineer finds one of the fabric interconnects offline when connecting L1 and L2 ports on both fabric interconnects. Which action resolves the issue?

Options:

- A-** 1. Connect to Fabric Interconnect B.
2. Verify the cluster status and HA election.
3. Validate Fabric Interconnect B hardware issues.
- B-** 1. Connect to Fabric Interconnect A.
2. Verify the cluster status and HA election.
3. Validate Fabric Interconnect A hardware issues.
- C-** 1. Connect Fabric Interconnect B and change the role to primary.
2. Reboot Fabric Interconnect B.
3. Add the Fabric Interconnect A as subordinate fabric to the cluster.
- D-** 1. Connect Fabric Interconnect B and execute "Erase configuration"
2. Reboot Fabric Interconnect B.
3. Add the subordinate Fabric Interconnect to the cluster.

Answer:

D

To Get Premium Files for 300-615 Visit

<https://www.p2pexams.com/products/300-615>

For More Free Questions Visit

<https://www.p2pexams.com/cisco/pdf/300-615>

