



**Free Questions for 300-615 by dumpssheet**

**Shared by Lang on 06-06-2022**

**For More Free Questions and Preparation Resources**

**Check the Links on Last Page**

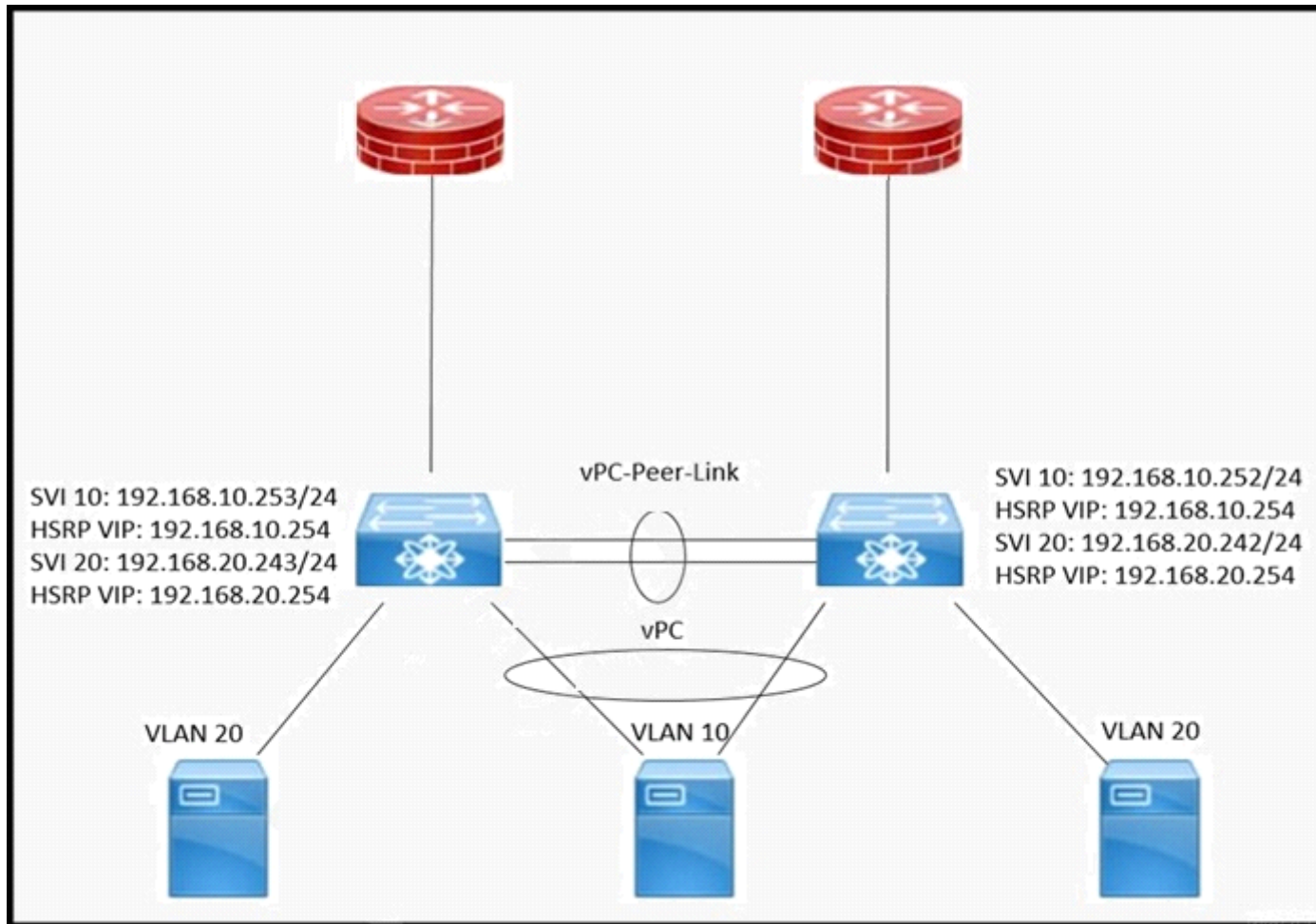
# Question 1

---

**Question Type: MultipleChoice**

---

Refer to the exhibit.



An engineer discovers that if the vPC peer link goes down, half of the devices in VLAN 20 experience connectivity issues with the external networks Which action resolves the issue?

### Options:

---

- A- Configure a dedicated Layer 3 link between vPC peers
- B- Allow non-vPC VLANs on a second trunk between the two vPC peers
- C- Add the non-vPC SVIs in the dual-active exclude VLAN list
- D- Exclude the non-vPC VLANs from vPC peer link

### Answer:

---

B

## Question 2

---

**Question Type:** MultipleChoice

---

Refer to the exhibit.

```
n7k-1(config)# no role feature-group name test_feature_group1
ERROR: Feature group is in use. Can't remove the feature group
n7k-1(config)# show role | egrep role:|feature-group
 1      permit read-write feature-group      test_feature_group1
n7k-1(config)#
```

A network administrator must delete a feature group from a Cisco Nexus 5000 Series Switch. Which action resolves the issue?

**Options:**

---

- A- Detach the association with the no rule command within the role configuration mode
- B- Detach the association with the no role command within the feature-group configuration mode
- C- Detach the association with the no rule command within the feature-group configuration
- D- Detach the association with the no role command within the role configuration mode

**Answer:**

---

A

## Question 3

---

**Question Type:** MultipleChoice

---

Refer to the exhibit.

```
switch# show port-security database active
-----
VSAN      Logging-in Entity          Logging-in Point    (Interface)    Learnt
-----
1         21:00:00:e0:8b:06:d9:1d(pwwn)  20:0d:00:05:30:00:95:de(fc1/1)  Yes
[Total 1 entries]
```

An engineer must strictly enforce the port security configuration database in the Fibre Channel fabric. A new device has been connected to the Fibre Channel storage interface that was configured for port security. The port security was enabled for the VSAN that the port belongs to. Despite the configuration, the rogue devices can log into the fabric. Which action resolves the issue?

### Options:

---

- A- Commit the active database with the port-security database copy vsan 1 command
- B- Disable auto learn in VSAN 1 with the no port-security auto-learn vsan 1 command
- C- Disable CFS distribution with the no port-security distribute vsan 1 command
- D- Commit the changes with the port-security commit copy vsan 1 command

### Answer:

---

B

## Question 4

---

**Question Type:** MultipleChoice

---

Refer to the exhibit.

```
MDS-Core(config)# role name FSPF_Admin  
MDS-Core(config-role)# rule 1 deny config  
MDS-Core(config-role)# rule 2 permit config feature fspf
```

RBAC is configured on the MDS switch for a new SAN administrator engineer to work on the FSPF configuration. However, after the configuration is applied the engineer who was assigned the FSPF\_Admin role cannot perform any configuration changes. Which action resolves the issue?

### Options:

---

- A- Write rule 2 before rule 1
- B- Remove rule 1 from the role

**C-** Configure the switch license for RBAC

**D-** Reload the switch

**Answer:**

---

A

## **Question 5**

---

**Question Type: MultipleChoice**

---

Refer to the exhibit.



```
N9K-1(config)# show scheduler schedule
Schedule Name      : copy_run
-----
User Name          : admin
Schedule Type      : Run every 0 Days 24 Hrs 0 Mins
Start Time         : Sun Jun 28 13:40:41 2020
Last Execution Time : Sun Jun 30 13:40:41 2020
Last Completion Time: Sun Jun 30 13:40:42 2020
Execution count    : 2
```

```
-----
Job Name           Last Execution Status
-----
save_cfg_every_day      Failed (1)
=====
```

```
N9K-1(config)# show scheduler logfile
Job Name      : save_cfg_every_day      Job Status: Failed (1)
Schedule Name : copy_run                User Name : netdevops
Completion time: Sun Jun 29 13:40:42 2020
```

```
===== Job Output =====
'copy running-config ftp://172.16.1.5/N9K-1_config_2020-06-29-13.40.41 vrf
management'
ftp: bad context 0
=====
```

```
Job Name      : save_cfg_every_day      Job Status: Failed (1)
Schedule Name : copy_run                User Name : netdevops
Completion time: Sun Jun 30 13:40:42 2020
```

```
===== Job Output =====
'copy running-config ftp://172.16.1.5/N9K-1_config_2020-06-30-13.40.41 vrf
management'
ftp: bad context 0
=====
```

```
N9K-1(config)# show scheduler job
Job Name: save_cfg_every_day
-----
copy running-config ftp://172.16.1.5/${SKITCHNAME)_config_$(TIMESTAMP) vrf
management
=====
```

The scheduler was configured to save the running-config automatically daily. However, the scheduler is returning the error presented. Which action resolves the issue?

**Options:**

---

- A- Reconfigure the scheduler using the admin user
- B- Use the kstack attribute for copying the configuration file
- C- Remove vrf management from the command
- D- Change the file transfer protocol to TFTP in scheduler job

**Answer:**

---

C

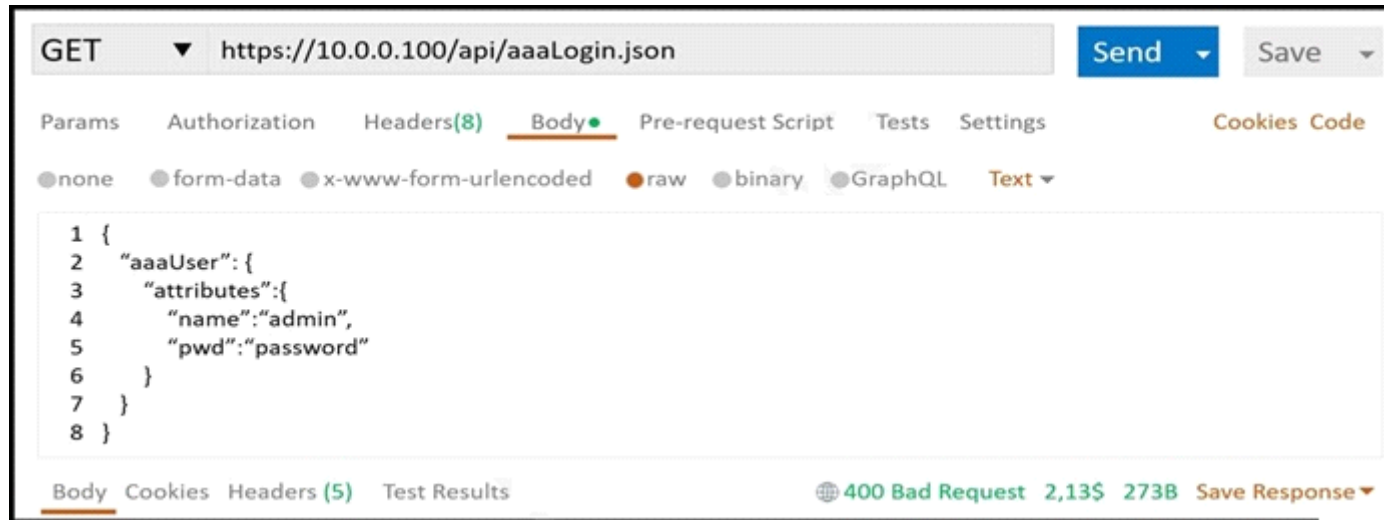
## Question 6

---

**Question Type: MultipleChoice**

---

Refer to the exhibit.



A Postman call to a Cisco APIC fails. The access credentials were confirmed to be configured as expected. Which action resolves the issue?

### Options:

---

- A- Change operation type to POST
- B- Modify the protocol to HTTP
- C- Change the IP address to a domain name
- D- Modify the target protocol type to XML

### Answer:

---

A

**To Get Premium Files for 300-615 Visit**

**<https://www.p2pexams.com/products/300-615>**

**For More Free Questions Visit**

**<https://www.p2pexams.com/cisco/pdf/300-615>**

