



Cisco 300-615 Mock Exam

Shared by Berry on 17-06-2026

For More Free Questions and Preparation Resources

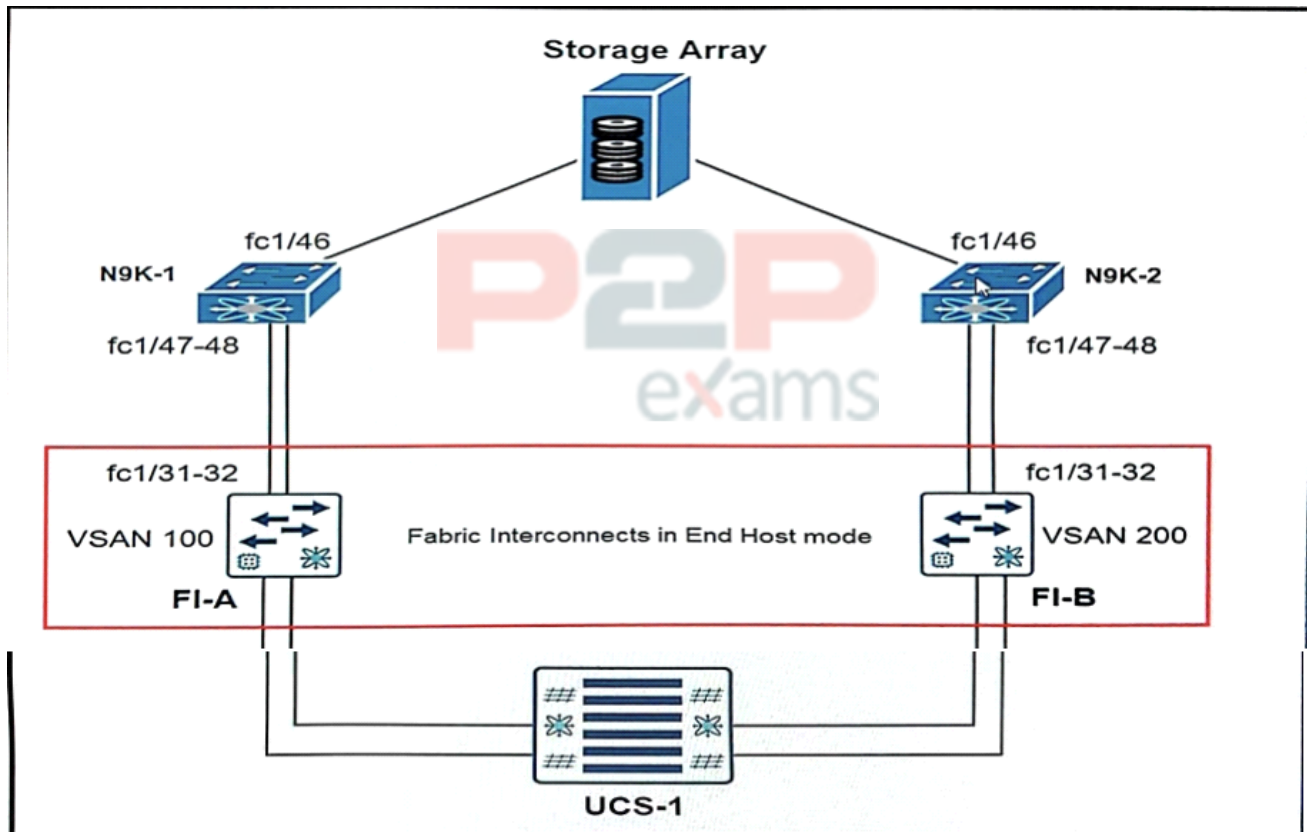
[Check the Links on Last Page](#)



Question 1

Question Type: MultipleChoice

Refer to the exhibit.



```

N9K-1#
!
feature fcoe
slot 1
  port 44-48 type fc
!
vsan database
  vsan 100
  vsan 100 interface fc1/46-48
!
interface fc1/46-48
  no shutdown
!

```

```

N9K-1# show flogi database interface fc1/47-48

```

INTERFACE	VSAN	FCID	PORT NAME	NODE NAME
-----	-----	-----	-----	-----

Refer to the exhibit. UCS- 1 fails to connect to the storage array. Which action resolves the issue?

Options:

- A- Set the FI-A mode to FC End Host mode.
- B- Enable N9K-1 mode to N-Port ID Virtualization.
- C- Configure N-Port ID Virtualization on FI-A.
- D- Implement N-Port Mirtualization on N9K-1.

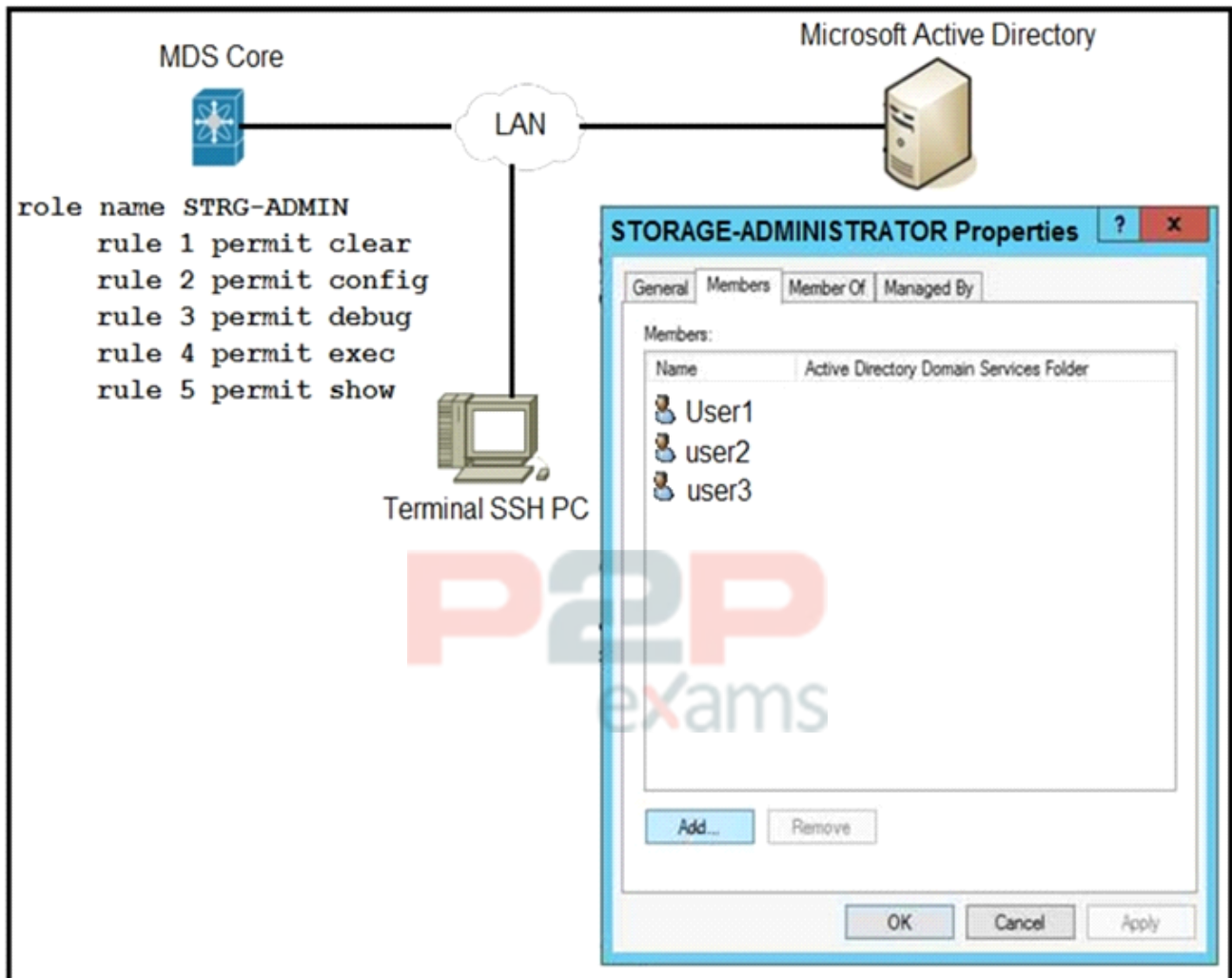
Answer:

B

Question 2

Question Type: MultipleChoice

Refer to the exhibit.



An engineer is troubleshooting why user1, user2, and user3 from group STORAGE-ADMINISTRATOR in Microsoft Active Directory cannot log in to the Cisco MDS SSH CLI. Which action resolves the issue?

Options:

- A- Configure the role name to match the group name on Microsoft Active Directory.
- B- Include specific users into MDS role configuration.
- C- Configure SSH logins on Cisco MDS switch.
- D- Integrate Cisco MDS with Microsoft Active Directory.

Answer:

A

Question 3

Question Type: MultipleChoice

Refer to the exhibit.

```

<fvTenant name="Tenant_VOD" >
  <fvAp name="VOD">
    <fvAEPg name="IntraEPGDeny" pcEnfPref="unenforced">
      <fvEsBd tnPvEDName="bd_VOD" />
      <fvRsDonatt tDn="uni/phyDem_VOD" />
      <fvRsPathAtt
tDn="topology/ped-1/paths-1022/pathep- (eth1/22) "
      encap="vlan-10" primaryEncap="vlan-110"
instrImedcy="immediate">
      </fvAEPg>
    </fvAp>
  </fvTenant>

```

Refer to the exhibit. customer reports that all Intra-EPG isolation stopped working within a bare-metal tenant. Postman is running on a machine to get information from the APIC in case of orchestration failure. Which action resolves the issue?

Options:

- A- Remove primaryEncap='vlan-110' from the specific port path.
- B- Match encap='vlan-10' and primaryEncap='vlan-110'
- C- Modify the GET command to reference the valid path for the managed object
- D- Change pcEnfPref='unenforced' to pcEnfPref='enforced'.

Answer:

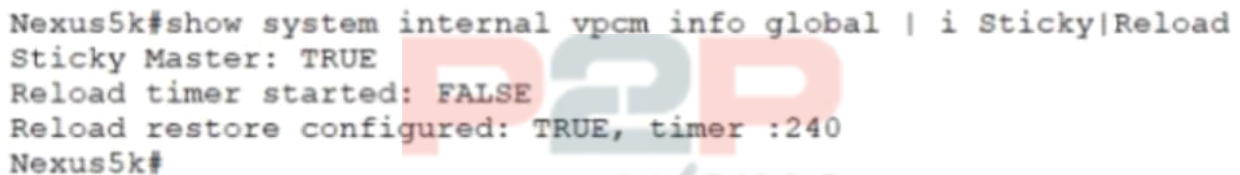
A

Question 4

Question Type: MultipleChoice

Refer to the exhibit.

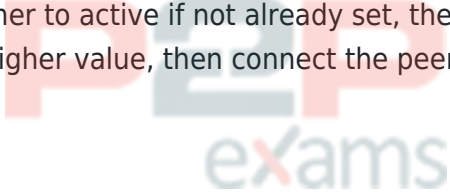
```
Nexus5k#show system internal vpcm info global | i Sticky|Reload
Sticky Master: TRUE
Reload timer started: FALSE
Reload restore configured: TRUE, timer :240
Nexus5k#
```



Refer to the exhibit. During a maintenance window of the Nexus switch pair, one of the Cisco Nexus chassis was brought offline for maintenance. The primary Cisco Nexus switch was stable during the maintenance window. After finishing the

tasks on the chassis, the administrator wanted to bring the second switch online. The administrator checked the status of the disconnected switch that was removed from the vPC during the maintenance. The engineer must connect the peer chassis seamlessly with the primary vPC peer without experiencing traffic interruption. Which action accomplishes this goal?

Options:

- A- Change the role priority, then connect the peer switch.
 - B- Change the auto recovery to disabled, and enable auto recovery.
 - C- Change the auto recovery timer to active if not already set, then re-establish the connectivity.
 - D- Change the auto timer to a higher value, then connect the peer switch.
- 

Answer:

D

Question 5

Question Type: MultipleChoice

A vPC Type-1 inconsistency between two vPC peers in a VXLAN EVPN setup is discovered. Which two actions need to be attempted to resolve the issue? (Choose two.)

Options:

- A- Configure the NVE interfaces to be Up on both switches.
- B- Set a different distributed gateway virtual MAC address.
- C- Set a different secondary IP addresses on NVE source-interface.
- D- Configure the same VNI to multicast group mapping.
- E- Set a different primary IP addresses on NVE source-interface.

Answer:

A, D

Question 6

Question Type: MultipleChoice

Refer to the exhibit.

```
switch# show interface fc1/5
fc1/5 is down (NPV upstream port not available)
Hardware is Fibre Channel, SFP is short wave laser w/o OFC (SN)
Port WWN is 20:47:00:0d:ac:a4:3b:83
Admin port mode is F, turnk mode is off
snmp link state traps are enabled
Port vsan is 100
    Receive data field Size is 2112
```

Interface fc1/5 is offline. Which action should be taken to troubleshoot the issue?

Options:

- A- Activate the correct zoneset for VSAN 100.
- B- Update the FLOGI database to contain the FLOGI entries for interface fc1/5 in VSAN 100.
- C- Update the FCNs database to contain names for VSAN 100.
- D- Configure the upstream ports and the server ports to be in VSAN 100.

Answer:

D

Question 7

Question Type: MultipleChoice

A server fails to boot from the operating system after a RAID1 cluster migration. The RAID remains in an inactive state during and after a service profile association. Which action resolves the issue?

Options:

- A- Configure the SAN boot target in the service profile.
- B- Configure the SAN boot target to any configuration mode.
- C- Use a predefined local disk configuration policy.
- D- Remove the local disk configuration policy.

Answer:

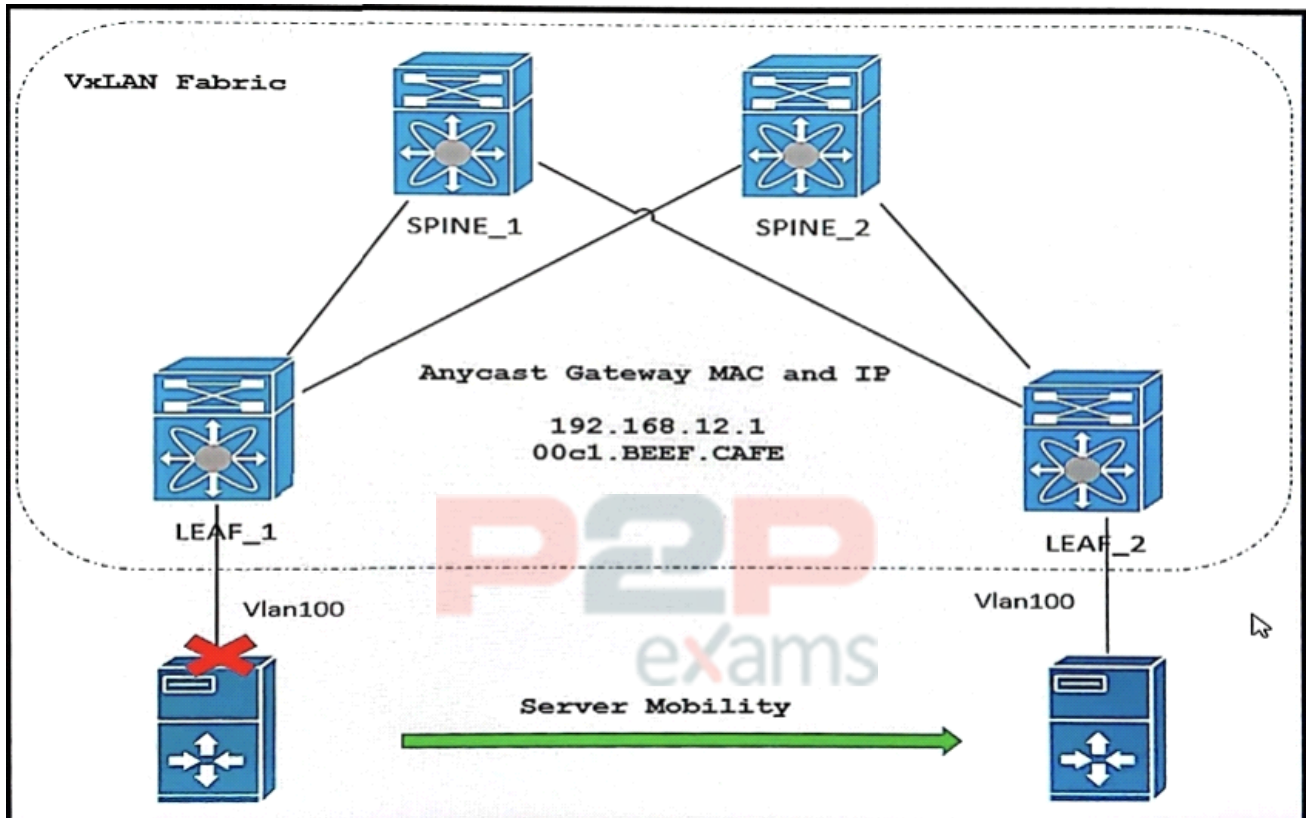
C

Question 8

Question Type: MultipleChoice

Refer to the exhibit.





!LEAF_2 CONFIG

```
vrf context WEB_SERVER
vni 33333
rd auto
address-family ipv4 unicast
route-target both auto
route-target both auto evpn
!
fabric forwarding anycast-gateway-mac 00C1.BEFE.CAFE
!
interface Vlan100
no shutdown
vrf context WEB_SERVER
ip address 192.168.12.1/24
!
interface Vlan30
no shutdown
vrf member WEB_SERVER
ip forward
```

Refer to the exhibit. To avoid service disruption, an engineer must move the server from LEAF_1 to LEAF_2. After running the test, the engineer noticed that LEAF_2 failed to forward network traffic into the VxLAN fabric. The BGP, interface NVE, and VNI were confirmed to be configured as expected. Which two actions must be taken on LEAF_2 to resolve the issue? (Choose two.)

Options:

- A- Change the fabric forwarding anycast-gateway-mac MAC address.
- B- Add fabric forwarding mode anycast-gateway on interface Vlan100.
- C- Configure correspondent IP addressing on every interface.
- D- Remove ip forward from interface Vlan30 and add it on interface Vlan100.
- E- Enable HMM tracking to advertise host routes into the VxLAN fabric.

Answer:

A, E



To Get Premium Files for 300-615 Visit

<https://www.p2pexams.com/products/300-615>

For More Free Questions Visit

<https://www.p2pexams.com/cisco/pdf/300-615>

20%
DISCOUNT

P2P
exams