



**Free Questions for 300-620 by certsdeals**

**Shared by Alexander on 12-12-2023**

**For More Free Questions and Preparation Resources**

**Check the Links on Last Page**

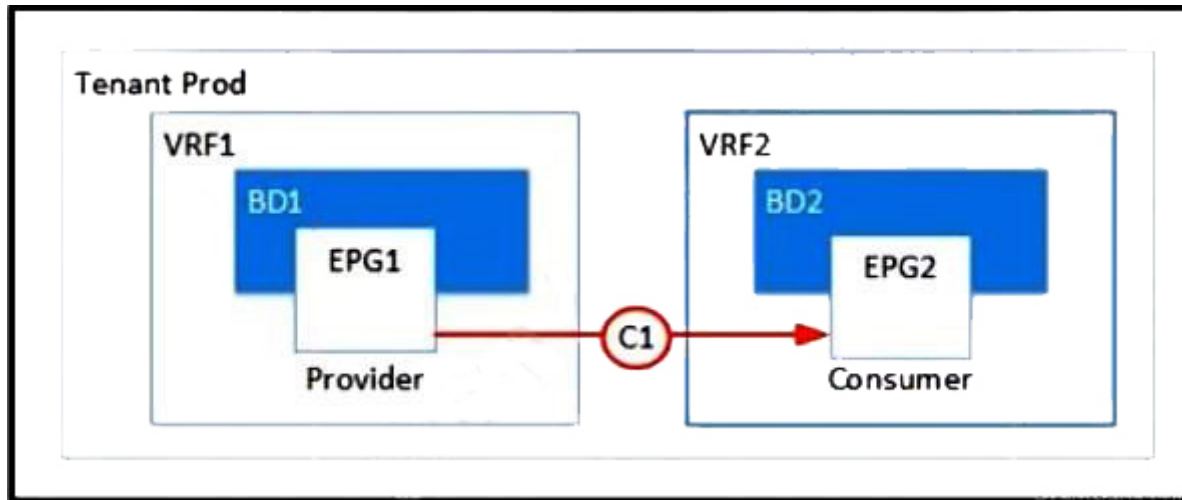
# Question 1

---

Question Type: MultipleChoice

---

Refer to the exhibit.



Which two configurations enable inter-VRF communication? (Choose two.)

## Options:

- A- Set the subnet scope to Shared Between VRFs.
- B- Enable Advertise Externally under the subnet scope.

- C- Export the contract and import as a contract interface.
- D- Change the contract scope to Tenant.
- E- Change the subject scope to VRF.

**Answer:**

---

B, C

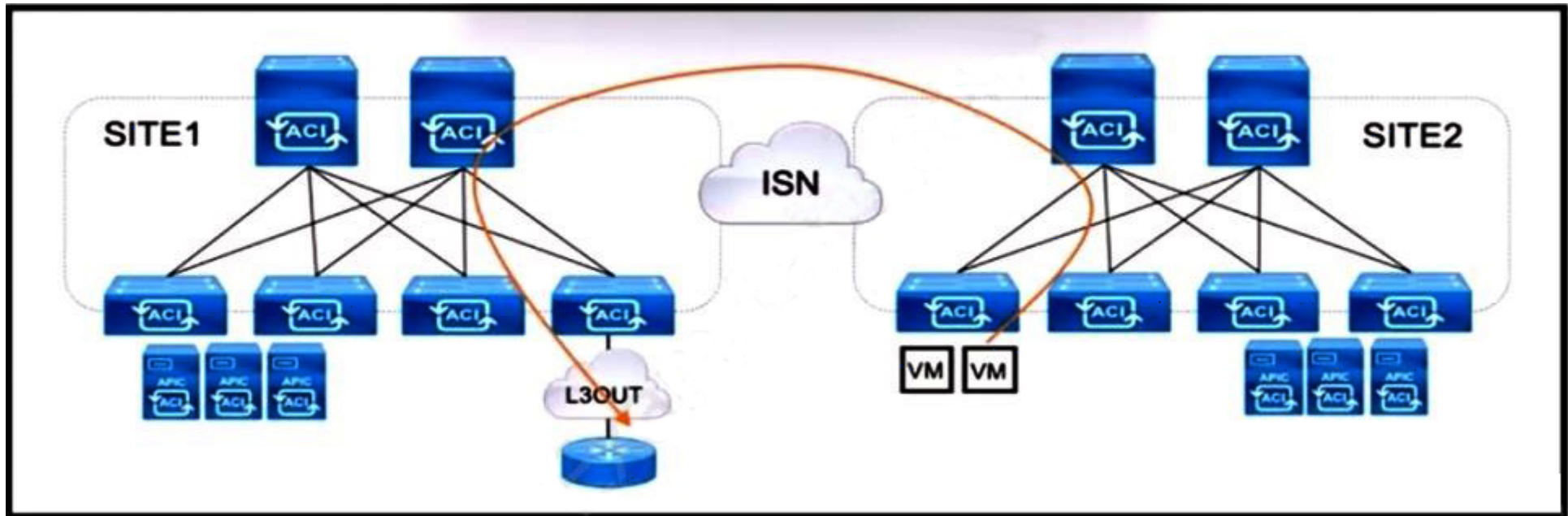
## Question 2

---

**Question Type:** MultipleChoice

---

Refer to the exhibit.



Refer to the exhibit. An engineer is configuring a production Multi-Site solution to provide connectivity from EPGs from a specific site to networks reachable through a remote site L3OUT. All required schema and template objects are already defined. Which additional configuration must be implemented in the Multi-Site Orchestrator to support the cross-site connectivity?

### Options:

- A- Configure a routable TEP pool for SITE1.
- B- Enable CloudSec for intersite traffic encryption.
- C- Add a new stretched external EPG to the existing L3OUT.

**D-** Implement a policy-based redirect using a service graph.

**Answer:**

---

C

**Explanation:**

---

in order to provide connectivity from EPGs from a specific site to networks reachable through a remote site L3OUT, a new stretched external EPG must be added to the existing L3OUT.

## Question 3

---

**Question Type:** MultipleChoice

---

Where are STP BPDUSs flooded in Cisco ACI fabric?

**Options:**

---

**A-** in the access encapsulation VLAN part of different VLAN pools

**B-** in the bridge domain VLAN

**C-** in the native VLAN ID

**D-** in the VNID that is assigned to the FD VLAN

**Answer:**

---

B

**Explanation:**

---

STP BPDUs are flooded in the bridge domain VLAN in Cisco ACI fabric.

## Question 4

---

**Question Type: MultipleChoice**

---

Which feature should be disabled on a bridge domain when a default gateway for endpoints is on an external device instead of a Cisco ACI bridge domain SVI?

**Options:**

---

- A- unknown unicast flooding
- B- ARP flooding
- C- unicast routing
- D- proxy ARP

**Answer:**

---

A

## Question 5

---

**Question Type: MultipleChoice**

---

What controls communication between EPGs?

**Options:**

---

- A- Inter-EPG communication is controlled by BGP.

- B-** Inter-EPG communication is controlled by contracts.
- C-** Inter-EPG communication is controlled by IS-IS.
- D-** Inter-EPG communication is controlled by VXLAN.

**Answer:**

---

C

## Question 6

---

**Question Type:** MultipleChoice

---

A customer is deploying a new application across two ACI pods that is sensitive to latency and jitter. The application sets the DSCP values of packets to AF31 and CS6, respectively. Which configuration changes must be made on the APIC to support the new application and prevent packets from being delayed or dropped between pods?

**Options:**

---

- A-** disable DSCP mapping on the IPN devices
- B-** disable DSCP translation policy



**C-** align the ACI QoS levels and IPN QoS policies

**D-** align the custom QoS policy on the EPG site in the customer tenant

**Answer:**

---

C

**Explanation:**

---

This will ensure that the Quality of Service (QoS) levels and policies within the ACI fabric and the IPN devices match, preventing packets from being delayed or dropped between pods. Additionally, it is important to align the DSCP values of the packets with the configured QoS levels to ensure that the application's requirements for latency and jitter are met.

## Question 7

---

**Question Type:** MultipleChoice

---

The engineer notices frequent MAC and IP address moves between different leaf switch ports. Which action prevents this problem from occurring?

### Options:

---

- A- Disable enforce subnet check.
- B- Enable endpoint loop protection.
- C- Enable rogue endpoint control.
- D- Disable IP bridge domain enforcement.

### Answer:

---

B

### Explanation:

---

enabling endpoint loop protection can prevent frequent MAC and IP address moves between different leaf switch ports.

**To Get Premium Files for 300-620 Visit**

**<https://www.p2pexams.com/products/300-620>**

**For More Free Questions Visit**

**<https://www.p2pexams.com/cisco/pdf/300-620>**

