



Free Questions for 300-820 by dumpshq

Shared by Decker on 29-01-2024

For More Free Questions and Preparation Resources

Check the Links on Last Page

Question 1

Question Type: MultipleChoice

How does an administrator configure an Expressway to make sure an external caller cannot reach a specific internal address?

Options:

- A- add the specific URI in the firewall section of the Expressway and block it
- B- block the call with a call policy rule in the Expressway-E
- C- add a search rule route all calls to the Cisco UCM
- D- configure FAC for the destination alias on the Expressway

Answer:

B

Question 2

Question Type: MultipleChoice

Which step is required when configuring Cisco Webex Hybrid Message Service?

Options:

- A- Add Expressway-C and Cisco UCM to the Cisco Webex Cloud.
- B- Register Expressway-C Connector Hosts to the Cisco Webex Cloud.
- C- Add Cisco Unity Connection to Expressway-E.
- D- Register Expressway-C to Cisco UCM.

Answer:

B

Question 3

Question Type: MultipleChoice

Which connection does the traversal zone configuration define?

Options:

- A- Expressway-E and Collaboration Endpoints
- B- Cisco UC and Cisco Unified Presence Server
- C- Cisco Expressway-C and Cisco Expressway-E platforms
- D- Cisco UCS E-Series and Cisco UCM

Answer:

C

Question 4

Question Type: MultipleChoice

An engineer wants to configure a zone on the Expressway-E to receive communications from the Expressway-C in order to allow inbound and outbound calls. How is the peer address configured on the Expressway-C when Expressway-E has only one NIC enabled and is using static NAT mode?

Options:

- A- Expressway-E FQDN
- B- Cisco UCM FQDN
- C- Expressway-E DHCP
- D- Cisco UCM DHCP

Answer:

A

Question 5

Question Type: MultipleChoice

An organization has a domain name of example.com. Which two SRV records are valid for a SIP and H 323 communication? (Choose two)

Options:

- A- _collab-edge._tls.example.com
- B- _sips_tcp.example.com

C- _h323ls_tcp.example.com

D- _h323ls_udp.example.com

E- _sips_udp.example.com

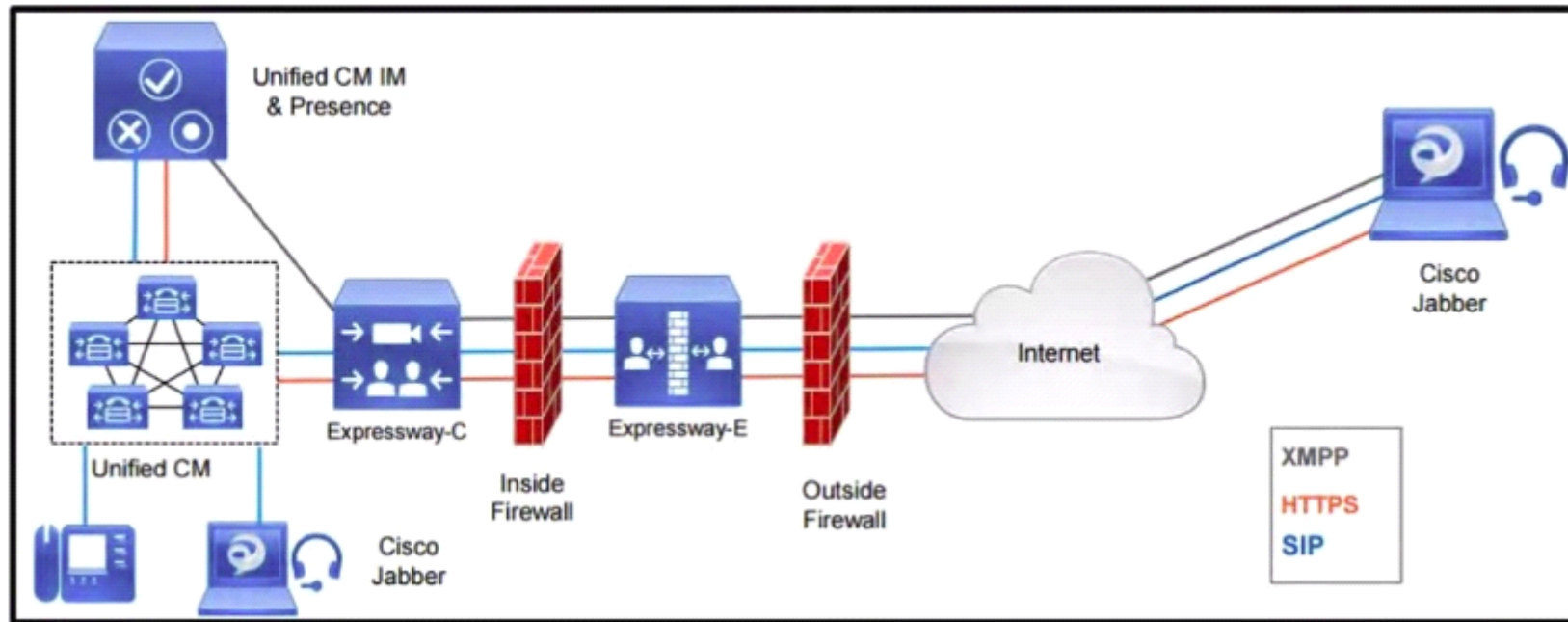
Answer:

B, D

Question 6

Question Type: MultipleChoice

Refer to the exhibit.



Which inbound connection should an administrator configure on the outside firewall?

Options:

- A- Media: UDP 36000 to 36011
- B- HTTPS (tunneled over SSH between C and E): TCP 2222
- C- SIP TCP 5061
- D- XMPP TCP 5222

Answer:

A

Question 7

Question Type: MultipleChoice

Which SIP media encryption mode is applied by default for newly created zones in the Cisco Expressway?

Options:

A- Off

B- Auto

C- Force Encrypted

D- Best Effort

Answer:

B

Question 8

Question Type: MultipleChoice

An external Jabber device cannot register. While troubleshooting this issue, the engineer discovers that privately signed certificates are being used on Expressway-C and Expressway-E. What action will resolve this issue?

Options:

- A- The private CA certificate must be placed in the phone trust store.
- B- The Jabber client must register to the Cisco UCM internally before it will register externally.
- C- The device running the Jabber client must use a VPN to register.
- D- The device running the Jabber client must download and trust the private CA certificate.

Answer:

D

Question 9

Question Type: MultipleChoice

A MRA deployment is being configured where one of the requirements is for registered Jabber users to pull directory photos from an internal server. What should be configured on the Expressway-C so that MRA registered clients reach this server?

Options:

- A-** A search rule must be created to route the requests to Cisco UCM.
- B-** The directory photo server must be added to the HTTP allow list.
- C-** A neighbor zone must be created to the directory photo server.
- D-** The directory photo server FQDN must be added to the Expressway-C certificate.

Answer:

B

To Get Premium Files for 300-820 Visit

<https://www.p2pexams.com/products/300-820>

For More Free Questions Visit

<https://www.p2pexams.com/cisco/pdf/300-820>

