



Free Questions for DES-1241 by certscare

Shared by Alexander on 15-04-2024

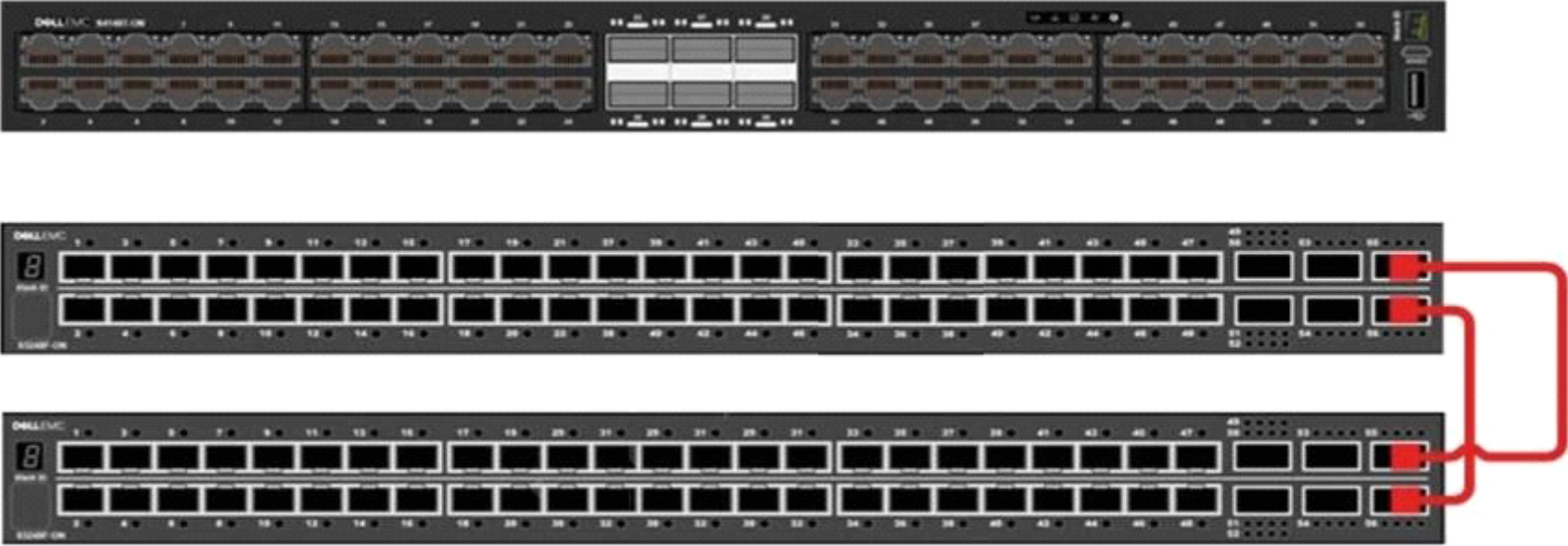
For More Free Questions and Preparation Resources

Check the Links on Last Page

Question 1

Question Type: MultipleChoice

Refer to the exhibit.



What Dell EMC PowerStore ToR front-end cabling is shown?

Options:

- A- OOB Management
- B- VLTi interconnectivity
- C- Core switch uplink
- D- Management and discovery

Answer:

B

Question 2

Question Type: MultipleChoice

The "svc_rescue_state list" shows a node in service mode. How can the node be returned to normal mode?

Options:

- A- svc_rescue_state normal
- B- svc_rescue_state clear
- C- svc_rescue_state exit

D- svc_rescue_state quit

Answer:

B

Question 3

Question Type: MultipleChoice

What describes Dell EMC PowerStore X power down?

Options:

- A- PowerStore X node, appliance, or cluster power down is done entirely with vCenter server commands
- B- Powering down a PowerStore X node, appliance, or cluster is done in the same manner as a PowerStore T
- C- PowerStore X node, appliance, or cluster power down utilizes the VSi plugin to perform the needed vCenter server operations
- D- Powering down a PowerStore X node, appliance, or cluster requires additional vCenter server commands

Answer:

A

Question 4

Question Type: MultipleChoice

Which network is used for internal communication?

Options:

- A- Intra-Cluster Data
- B- Intra-Cluster Management
- C- NAD Network
- D- Inter-Node Network

Answer:

B

Question 5

Question Type: MultipleChoice

A Storage Administrator notices two fans in a Dell EMC PowerStore are faulted. What describes the system behavior in this circumstance?

Options:

- A-** A five-minute timer starts upon the second fan fault and the system shuts down automatically after the timer expires
- B-** CPU clock speed is reduced by 50% to lower internal temperatures and the system continues normal operations
- C-** An increased fan speed signal is sent to the surviving fans and the system continues normal operations
- D-** Upon the second fan fault, all host I/O is terminated immediately and the PowerStore goes through the halt and vault process and shuts down

Answer:

A

Question 6

Question Type: MultipleChoice

Which option is used when running the journalctl command to query log messages regardless of capitalization?

Options:

A- option --casesensitive=YES/NO

B- option -quotes

C- option -ignorecase

D- option --casesensitive=TRUE/FALSE

Answer:

D

Explanation:

https://dl.dell.com/topicspdf/pwrstr-ssg_en-us.pdf

To Get Premium Files for DES-1241 Visit

<https://www.p2pexams.com/products/des-1241>

For More Free Questions Visit

<https://www.p2pexams.com/dell-emc/pdf/des-1241>

