



**Free Questions for [DES-6322](#) by [certsdeals](#)**

**Shared by [Briggs](#) on [29-01-2024](#)**

**For More Free Questions and Preparation Resources**

**[Check the Links on Last Page](#)**

## Question 1

---

**Question Type:** MultipleChoice

---

What is a consideration when expanding a VxRail cluster? (Choose two.)

### Options:

---

- A- Mixing of All-Flash and all-NVMe nodes in a cluster is not allowed
- B- Expanding a cluster to 64 nodes requires a 25 GbE network
- C- G Series clusters can be expanded only with G Series nodes
- D- 1 GbE must be hybrid and single processor node type

### Answer:

---

B, C

## Question 2

---

**Question Type:** MultipleChoice

---

A company needs to enable vSphere GPU capabilities on their VxRail cluster. To do so, they need to purchase a specific entitlement.

What licensing satisfies this requirement?

**Options:**

---

- A- vSphere Enterprise Plus
- B- vSAN Enterprise Plus Edition
- C- vSAN Advanced Edition
- D- vSphere Standard

**Answer:**

---

A

## Question 3

---

**Question Type: MultipleChoice**

---

What is the recommended format for host names when using the VxRail Deployment Wizard for an External vCenter solution?

**Options:**

---

**A-** FQDN for vCenter Server

Host name for VxRail Manager

**B-** Host name for both vCenter Server and for VxRail Manager

**C-** FQDN for both vCenter Server and for VxRail Manager

**D-** Host name for vCenter Server

FQDN for VxRail Manager

**Answer:**

---

A

## Question 4

---

**Question Type:** MultipleChoice

---

What is a consideration when implementing a custom VDS on a VxRail cluster?

**Options:**

---

- A- Used by multiple clusters managed by a single vCenter instance
- B- Supported with external and internal vCenter Servers
- C- Supports only four NIC uplinks
- D- Supports only two NIC uplinks

**Answer:**

---

B

## Question 5

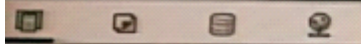
---

**Question Type:** MultipleChoice

---

Use the VxRail simulator to explore the system. What is the presented configuration?

Note: It is necessary to close (x) the simulator window before you can select a response to this question.



vcsa70.edu.local | ACTIONS

- vcsa70.edu.local
  - VxRail-Cluster
    - VxRail-Cluster
    - vcluster730-esx01...
    - vcluster730-esx02...
    - vcluster730-esx03...
    - VxRail Manager

- Summary
- Monitor
- Configure
- Permissions
- Datacenters
- Hosts & Clusters
- VMs
- Datastores
- Networks



Version: 7.0.1  
Build: 17005016  
Last Updated: Nov 24, 2020, 7:04 AM  
Last File-Based Backup: Not scheduled

Clusters: 1  
Hosts: 3  
Virtual Machines: 4

Custom Attributes

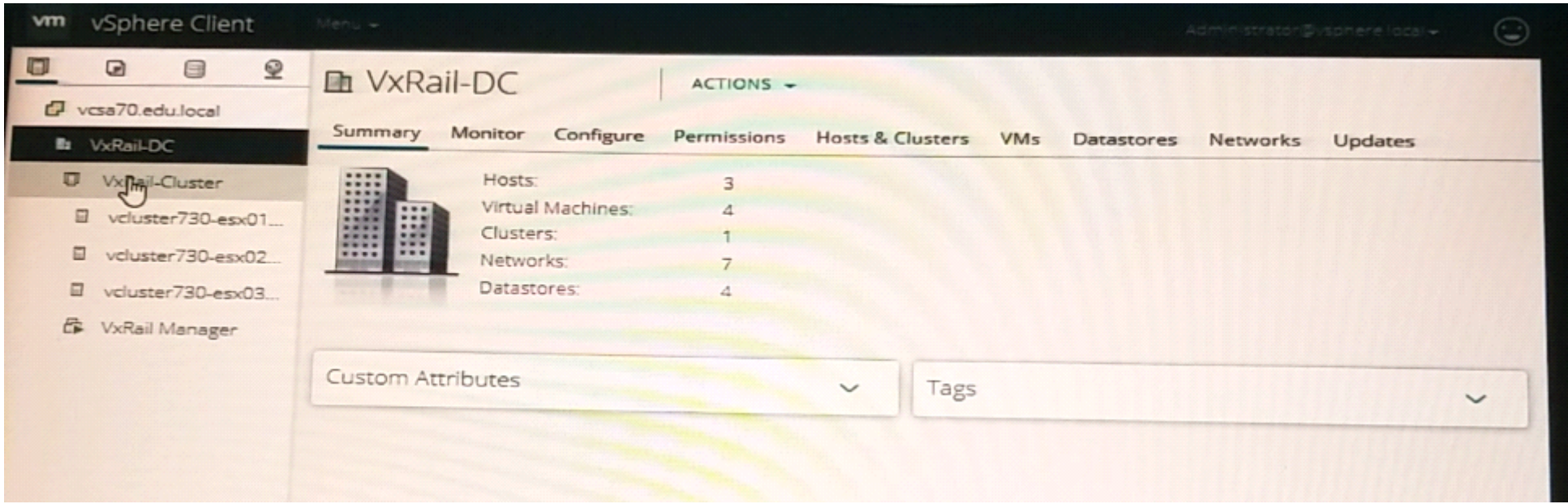
Tags

Health Status

Overall Health 🟢 Good

APPLIANCE MANAGEMENT

vCenter HA



- vcsa70.edu.local
- VxRail-DC
- VxRail-Cluster**
- vcluster730-esx01...
- vcluster730-esx02...
- vcluster730-esx03...
- VxRail Manager

# VxRail-Cluster | ACTIONS

- Summary
- Monitor
- Configure
- Permissions
- Hosts
- VMs
- Datastores
- Networks
- Updates



Total Processors: 48  
Total vMotion Migrations: 0  
Fault Domains:

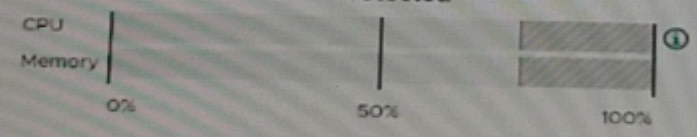


## Related Objects

**Datacenter** | VxRail-DC

## vSphere HA

Protected



CPU reserved for failover:	25 %
Memory reserved for failover:	25 %
Proactive HA:	Disabled
Host Monitoring:	Enabled
VM Monitoring:	Disabled

vSphere DRS

Cluster Consumers

Tags

Cluster Resources

## Custom Attributes

Attribute	Value
VxRail-Cluster-Tag	STANDARD
VxRail-IP	192.168.10.16
VxRail-SSL-THUMBPRINT	79:B6:6B:E3:5F:00:25...
VxRail-VERSION	7.0.100
com.vmware.vcenter.clu...	





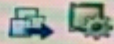
- vcsa70.edu.local
- VxRail-DC
- VxRail-Cluster
- vcluster730-esx01**
- vcluster730-esx02
- vcluster730-esx03
- VxRail Manager

# vcluster730-esx01.edu.local | ACTIONS

- Summary**
- Monitor
- Configure
- Permissions
- VMs
- Datastores
- Networks
- Updates



Hypervisor: VMware ESXi, 7.0.1, 16850804  
 Model: VMware 7,1  
 Processor Type: Intel(R) Xeon(R) CPU E5-2698 v4 @ 2.2 GHz  
 Logical Processors: 16  
 NICS: 4  
 Virtual Machines: 2  
 State: Connected  
 Uptime: 10 days



## Hardware

Manufacturer	VMware, Inc.
Model	VMware7,1
CPU	16 CPUs x 2.2 GHz
Memory	31.01 GB / 48 GB
Virtual flash Resource	0 B / 0 B
Networking	vcluster730-esx01.edu.local
Storage	2 Datastore(s)

## Tags

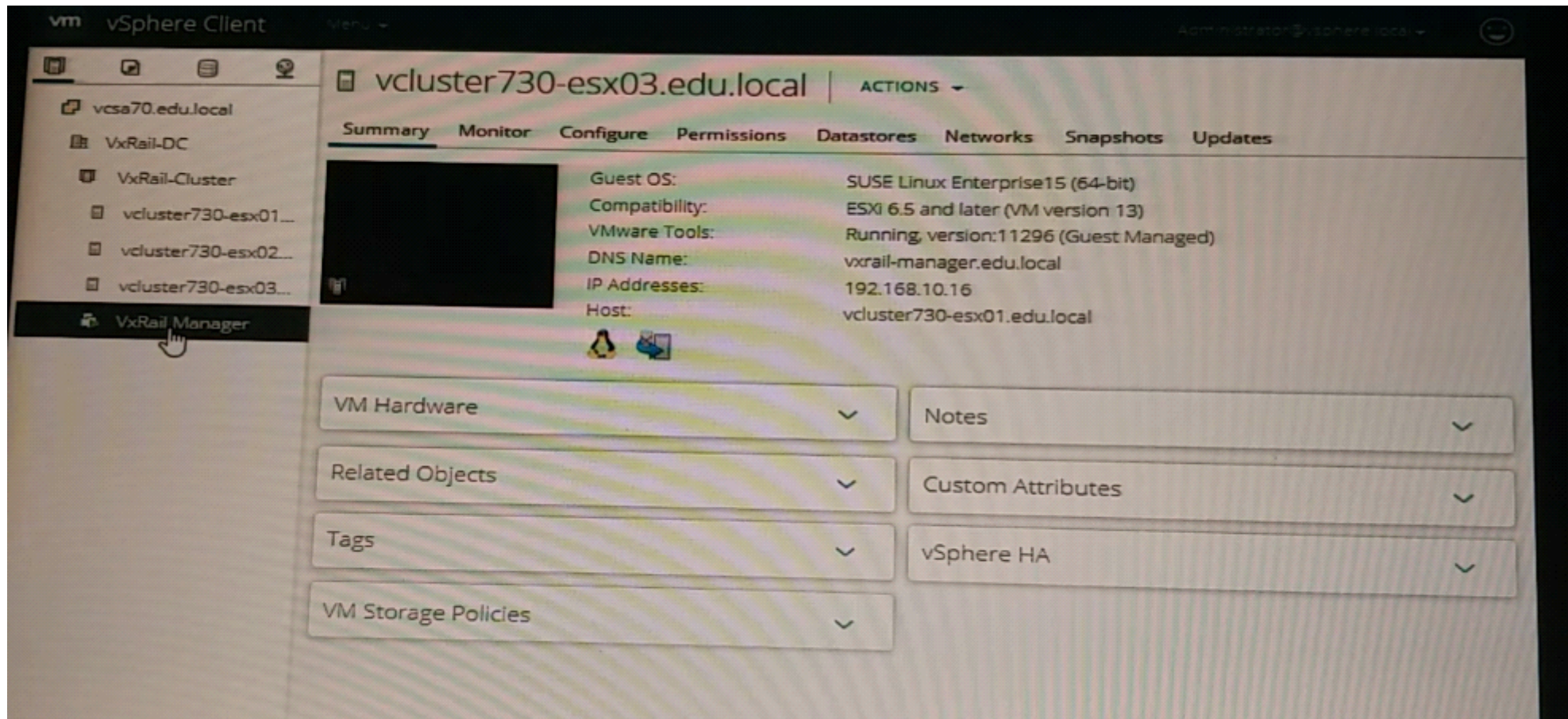
## Configuration

## Related Objects

Cluster

## Custom Attributes

Attribute	Value
AutoDeploy.MachineIdentity	



### Options:

- A- Internal vCenter and external DNS
- B- Internal vCenter and Internal DNS

C- External vCenter and external DNS

D- External vCenter and internal DNS

**Answer:**

---

A

## Question 6

---

**Question Type: MultipleChoice**

---

After implementation, the implementation engineer observes errors from both VxRail Manager and vCenter Server. Dell EMC support has requested a log bundle containing only the required log files. Using the simulator, create and download a log bundle for Dell EMC support.

When you have finished, continue to the next question.



# vcluster730-esx01.edu.local

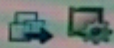
ACTIONS

- vcsa70.edu.local
- VxRail-DC
- VxRail-Cluster
- vcluster730-esx01...**
- vcluster730-esx02...
- vcluster730-esx03...
- VxRail Manager

- Summary**
- Monitor
- Configure
- Permissions
- VMs
- Datastores
- Networks
- Updates



Hypervisor: VMware ESXi, 7.0.1, 16850804  
Model: VMware 7,1  
Processor Type: Intel(R) Xeon(R) CPU E5-2698 v4 @ 2.2 GHz  
Logical Processors: 16  
NICS: 4  
Virtual Machines: 2  
State: Connected  
Uptime: 10 days



## Hardware

Manufacturer	VMware, Inc.
Model	VMware7,1
CPU	16 CPUs x 2.2 GHz
Memory	31.01 GB / 48 GB
Virtual flash Resource	0 B / 0 B
Networking	vcluster730-esx01.edu.local
Storage	2 Datastore(s)

## Tags

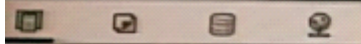
## Configuration

## Related Objects

Cluster VxRail-Cluster

## Custom Attributes

Attribute	Value
AutoDeploy.MachineIdentity	



vcsa70.edu.local | ACTIONS

- vcsa70.edu.local
  - VxRail
  - VxRail-Cluster
    - vcluster730-esx01...
    - vcluster730-esx02...
    - vcluster730-esx03...
  - VxRail Manager

- Summary
- Monitor
- Configure
- Permissions
- Datacenters
- Hosts & Clusters
- VMs
- Datastores
- Networks



Version: 7.0.1  
Build: 17005016  
Last Updated: Nov 24, 2020, 7:04 AM  
Last File-Based Backup: Not scheduled

Clusters: 1  
Hosts: 3  
Virtual Machines: 4

Custom Attributes

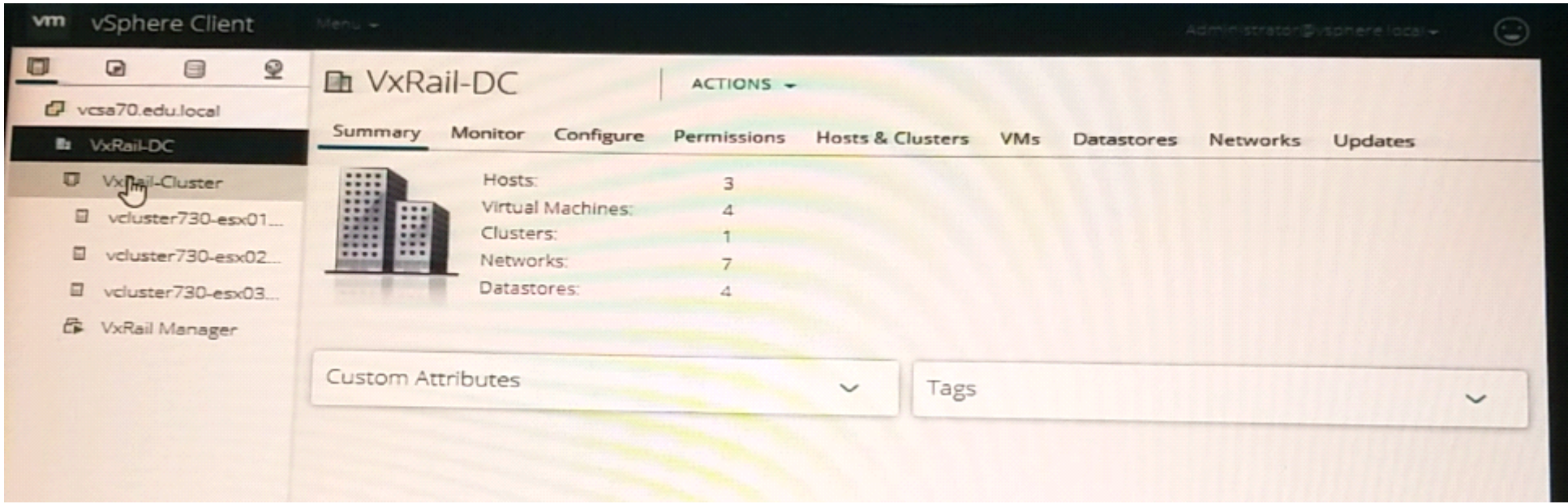
Tags

Health Status

Overall Health 🟢 Good

APPLIANCE MANAGEMENT

vCenter HA



- vcsa70.edu.local
- VxRail-DC
- VxRail-Cluster**
- vcluster730-esx01...
- vcluster730-esx02...
- vcluster730-esx03...
- VxRail Manager

# VxRail-Cluster | ACTIONS

- Summary
- Monitor
- Configure
- Permissions
- Hosts
- VMs
- Datastores
- Networks
- Updates



Total Processors: 48  
Total vMotion Migrations: 0  
Fault Domains:

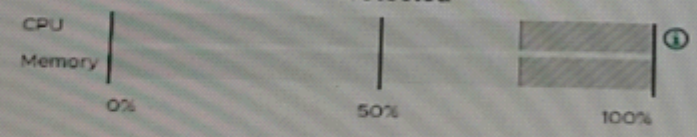


## Related Objects

**Datacenter** | VxRail-DC

## vSphere HA

Protected



CPU reserved for failover: 25 %  
Memory reserved for failover: 25 %  
Proactive HA: Disabled  
Host Monitoring: Enabled  
VM Monitoring: Disabled

vSphere DRS

Cluster Consumers

Tags

Cluster Resources

## Custom Attributes

Attribute	Value
VxRail-Cluster-Tag	STANDARD
VxRail-IP	192.168.10.16
VxRail-SSL-THUMBPRINT	79:B6:6B:E3:5F:00:25...
VxRail-VERSION	7.0.100
com.vmware.vcenter.clu...	



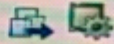
- vcsa70.edu.local
- VxRail-DC
- VxRail-Cluster
- vcluster730-esx01**
- vcluster730-esx02
- vcluster730-esx03
- VxRail Manager

# vcluster730-esx01.edu.local | ACTIONS

- Summary**
- Monitor
- Configure
- Permissions
- VMs
- Datastores
- Networks
- Updates



Hypervisor: VMware ESXi, 7.0.1, 16850804  
 Model: VMware 7,1  
 Processor Type: Intel(R) Xeon(R) CPU E5-2698 v4 @ 2.2 GHz  
 Logical Processors: 16  
 NICS: 4  
 Virtual Machines: 2  
 State: Connected  
 Uptime: 10 days



## Hardware

Manufacturer	VMware, Inc.
Model	VMware7,1
CPU	16 CPUs x 2.2 GHz
Memory	31.01 GB / 48 GB
Virtual flash Resource	0 B / 0 B
Networking	vcluster730-esx01.edu.local
Storage	2 Datastore(s)

## Tags

## Configuration

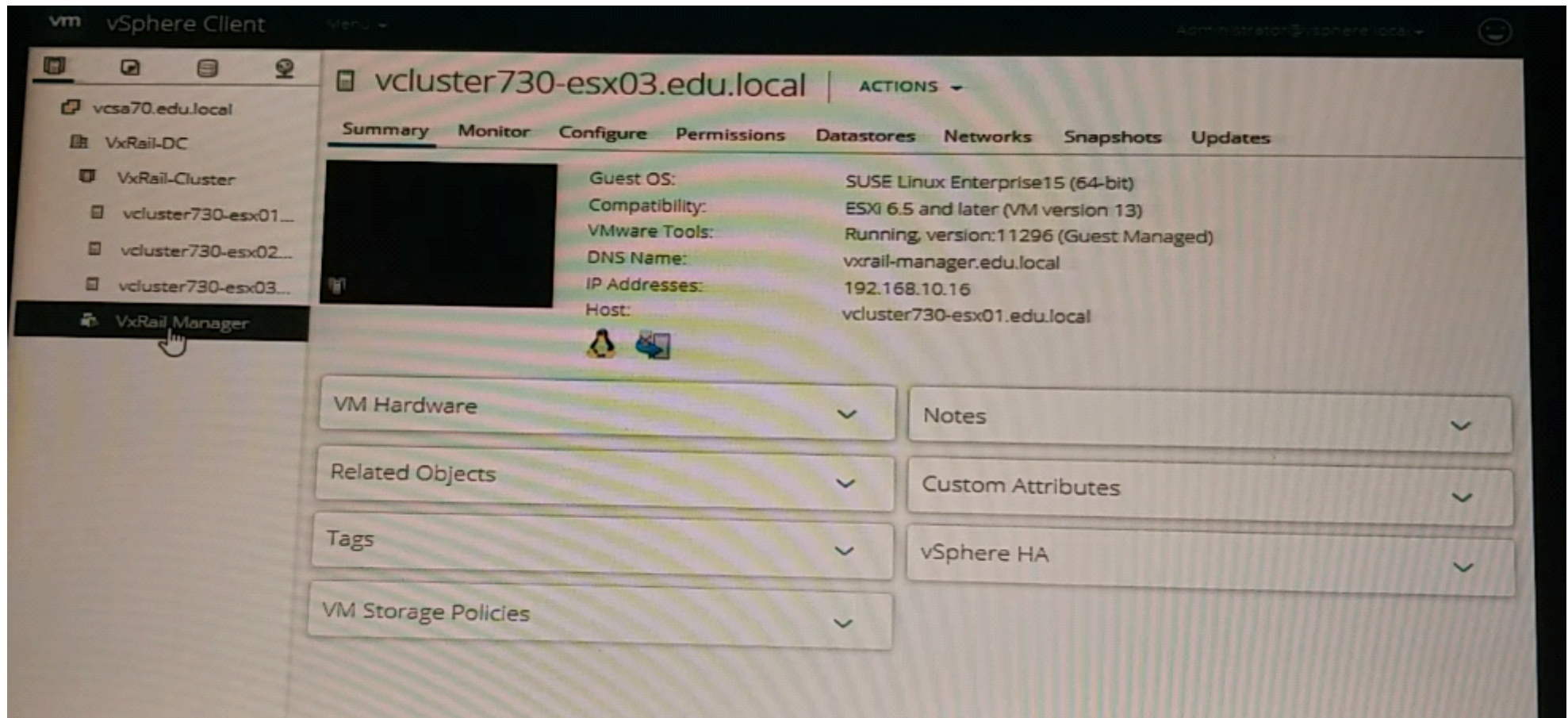
## Related Objects

Cluster

## Custom Attributes

Attribute	Value
AutoDeploy.MachineIdentity	





## Options:

A- Explanation:

Send your suggestions for this question.

**Answer:**

---

A

## Question 7

---

**Question Type: MultipleChoice**

---

A 2-node VxRail cluster is being deployed. Due to a preparation mistake, the host section is missing. Use the VxRail simulator to fully deploy the cluster using the JSON file.

Node Names:

vcluster-esx0 15-vrack

vcluster-esx0 16-vrack

Starting IP

Address: 192.168.10.15

Rack Name: Virtual Rack

Rack Position: 15-16

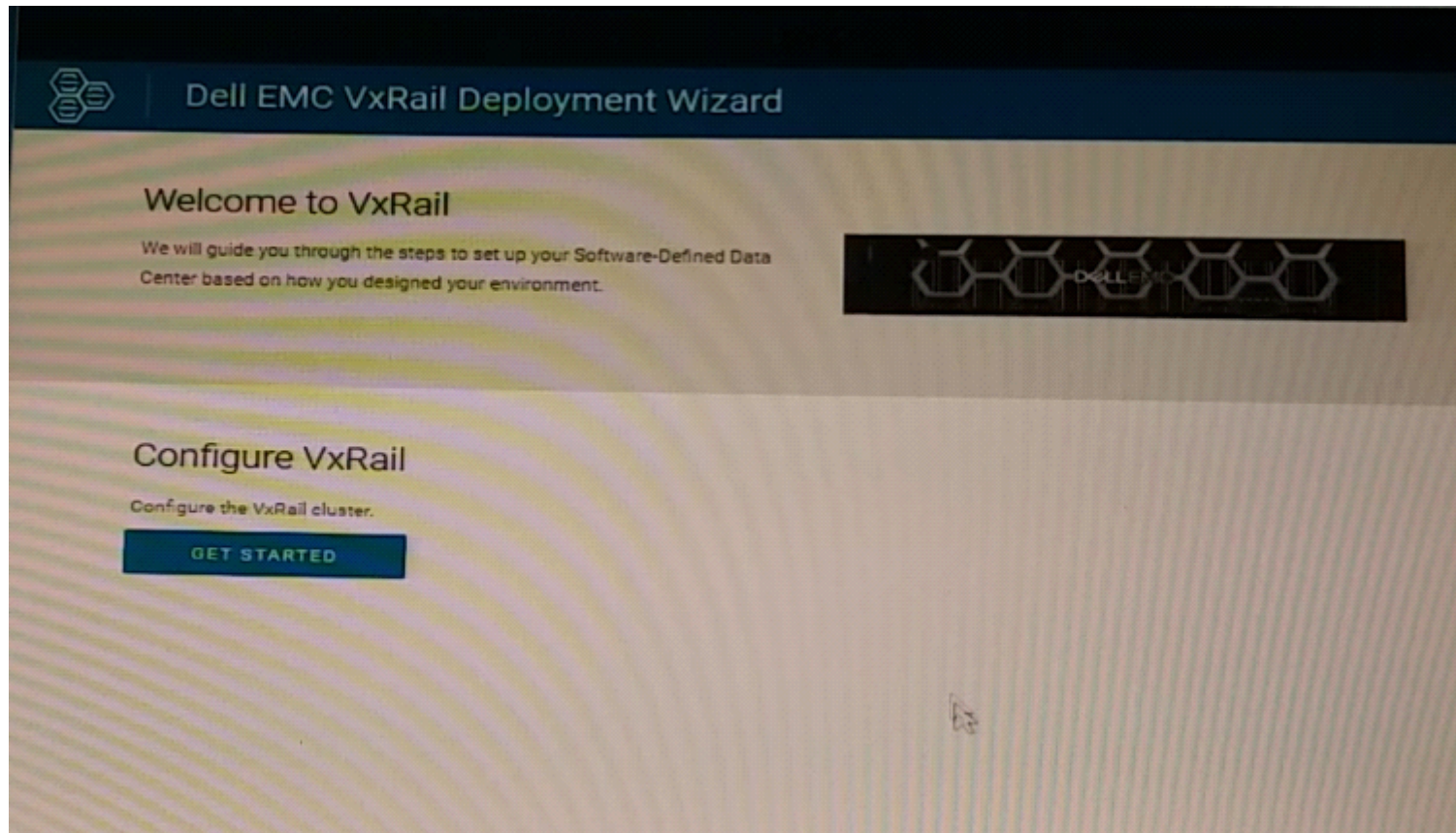
Passwords: Password123

!

ESXI Management

User: esxmgmt

When you have finished, continue to the next question.





- 1 Welcome
- 2 End User License Agreement**
- 3 Cluster Type
- 4 Discover Resources
- 5 Network Confirmation
- 6 Configuration Method
- 7 Global Settings
- 8 vCenter Server Settings
- 9 Host Settings
- 10 VxRail Manager Settings
- 11 Virtual Network Settings
- 12 Validate Configuration
- 13 Apply Configuration

## End User License Agreement

### DELL EMC SOFTWARE LICENSE AND MAINTENANCE AGREEMENT

\*\*\* IMPORTANT INFORMATION - PLEASE READ CAREFULLY \*\*\*

Congratulations on your new Dell EMC purchase!

Your purchase and use of this Dell EMC product is subject to and governed by the Dell EMC Commercial Terms of Sale, unless you have a separate written agreement with Dell EMC that specifically applies to your order, and the End User License Agreement (E-EULA), which are each presented below in the following order:

- Commercial Terms of Sale
- End User License Agreement (E-EULA)

The Commercial Terms of Sale for the United States are presented below and are also available online at the website below that corresponds to the country in which this product was purchased.

By the act of clicking "I accept", you agree (or re-affirm your agreement to) the foregoing terms and conditions. To

Accept

CANCEL

NEXT



## Dell EMC VxRail Deployment Wizard

- 1 Welcome
- 2 End User License Agreement
- 3 Cluster Type
- 4 Discover Resources
- 5 Network Confirmation
- 6 Configuration Method
- 7 Global Settings
- 8 vCenter Server Settings
- 9 Host Settings
- 10 VxRail Manager Settings
- 11 Virtual Network Settings
- 12 Validate Configuration
- 13 Apply Configuration

### Cluster Type

Specify the type of VxRail cluster that is being configured.

#### VxRail Cluster Type

- Standard Cluster (3 or more hosts)
- vSAN 2-Node Cluster (2 hosts only)



# Dell EMC VxRail Deployment Wizard

- 1 Welcome
- 2 End User License Agreement
- 3 Cluster Type
- 4 Discover Resources**
- 5 Network Confirmation
- 6 Configuration Method
- 7 Global Settings
- 8 vCenter Server Settings
- 9 Host Settings
- 10 VxRail Manager Settings
- 11 Virtual Network Settings
- 12 Validate Configuration
- 13 Apply Configuration

## Discover Resources

VxRail Cluster Type: Standard (3 hosts)

The following resources have been discovered in the environment.

### Hosts

Power-on and connect hosts to display them in the list. Power-off hosts to remove them from the list.

Service Tag	PSNT	Model	IDRAC IP Address
V073001	V0730010000000	VxRail E560F	192.168.105.16
V073002	V0730020000000	VxRail E560F	192.168.105.17
V073003	V0730030000000	VxRail E560F	192.168.105.18

### Top-of-Rack (TOR) Switch

TOR switch for configuration.

Switch Profile

Domain ID

Management IP



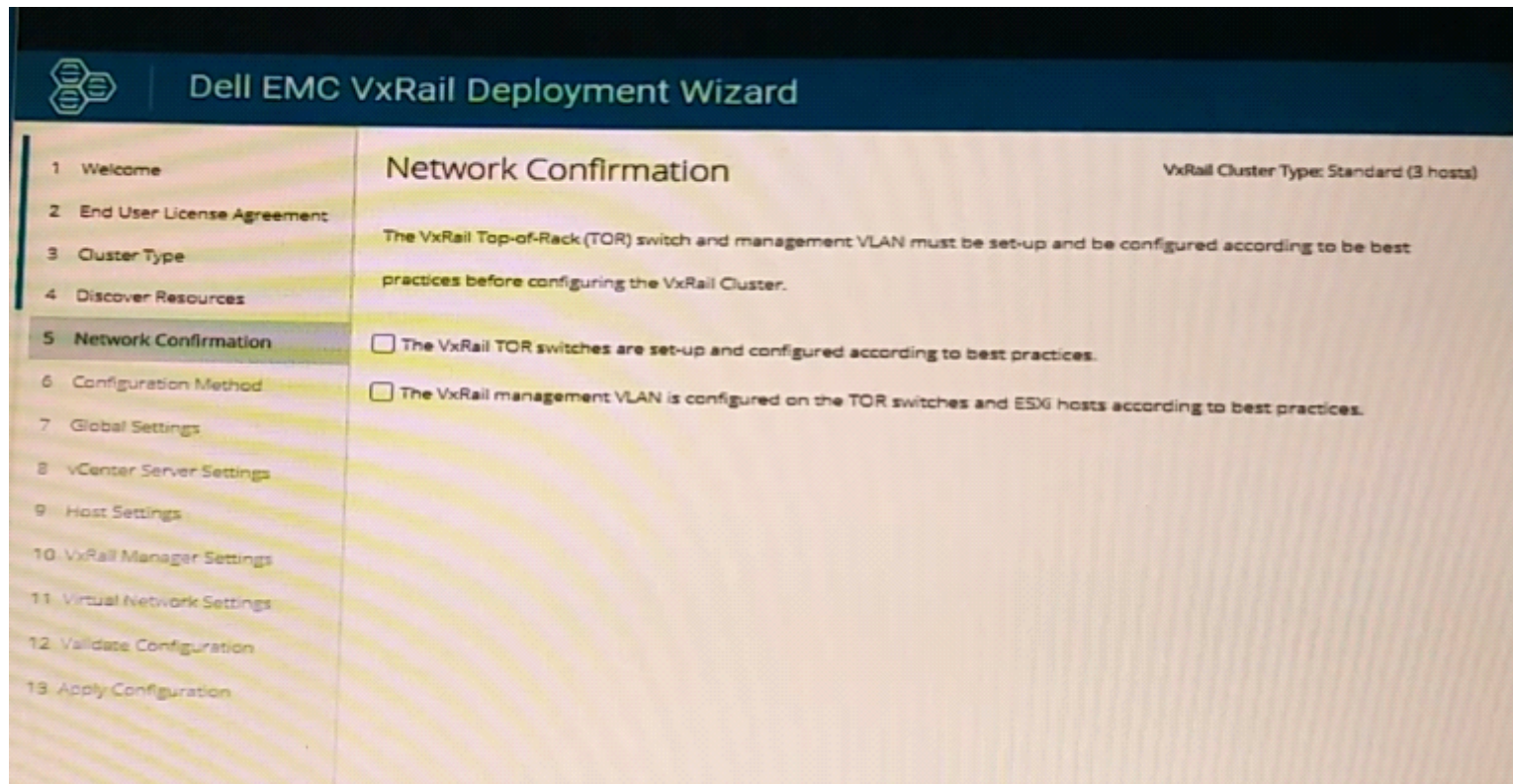
No Data

No switch configurations discovered

CANCEL

BACK

NEXT



## Options:

---

**A-** Explanation:

Send your suggestions for this question.

## Answer:

---

A

## Question 8

---

**Question Type:** MultipleChoice

---

A VxRail implementation engineer is validating the network environment with NVT. The proposed switch configuration is shown in the exhibit. The ToR Switch information file is available.

Use the VxRail simulator to set up NVT for switch validation. Import the switch Information and tag the ports based on the exhibit.



**DELL EMC** Network Validation Tool for VxRail v5.6.0 Home

Home \* Indicates required field.

Import

Site Information

Product Information

Network Services

Compute and iP

ToR Switch Information

Upstream Switch Information

Validate

**VLAN ID Information**

Untagged VLAN	External Management
External Management *	1751
Internal Management *	3939
vMotion *	10
VSAN *	20
Guest VM Networks *	1761

**Switch Information**

MTU

MTU *	1500
-------	------

**IMPORT SWITCH**

**NEXT**

✓ Submit   ? Help   ↺ Reset Simulator

Options:

**A-** Explanation:

Send your suggestions for this question.

**Answer:**

---

A

## Question 9

---

**Question Type: MultipleChoice**

---

An implementation engineer is performing a precheck on a VxRail cluster before expansion. During validation, they find out that the host is not compatible.

Use the VxRail simulator to describe why the host is Incompatible.

Note: It is necessary to close (x) the simulator window before you can select a response to this question.



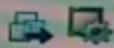
# vcluster730-esx01.edu.local

ACTIONS

- Summary
- Monitor
- Configure
- Permissions
- VMs
- Datastores
- Networks
- Updates



Hypervisor: VMware ESXi, 7.0.1, 16850804  
Model: VMware 7,1  
Processor Type: Intel(R) Xeon(R) CPU E5-2698 v4 @ 2.2 GHz  
Logical Processors: 16  
NICS: 4  
Virtual Machines: 2  
State: Connected  
Uptime: 10 days



## Hardware

Manufacturer	VMware, Inc.
Model	VMware7,1
CPU	16 CPUs x 2.2 GHz
Memory	31.01 GB / 48 GB
Virtual Disk Resource	0 B / 0 B
Networking	vcluster730-esx01.edu.local
Storage	2 Datastore(s)

## Tags

## Configuration

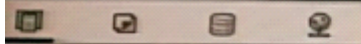
## Related Objects

Cluster VxRail-Cluster

## Custom Attributes

Attribute	Value
AutoDeploy.MachineIdentity	

- vcsa70.edu.local
- VxRail-DC
- VxRail-Cluster
- vcluster730-esx01...
- vcluster730-esx02...
- vcluster730-esx03...
- VxRail Manager



vcsa70.edu.local | ACTIONS

- vcsa70.edu.local
  - VxRail-Cluster
    - VxRail-Cluster
    - vcluster730-esx01...
    - vcluster730-esx02...
    - vcluster730-esx03...
    - VxRail Manager

Summary Monitor Configure Permissions Datacenters Hosts & Clusters VMs Datastores Networks



Version: 7.0.1  
Build: 17005016  
Last Updated: Nov 24, 2020, 7:04 AM  
Last File-Based Backup: Not scheduled

Clusters: 1  
Hosts: 3  
Virtual Machines: 4

Custom Attributes

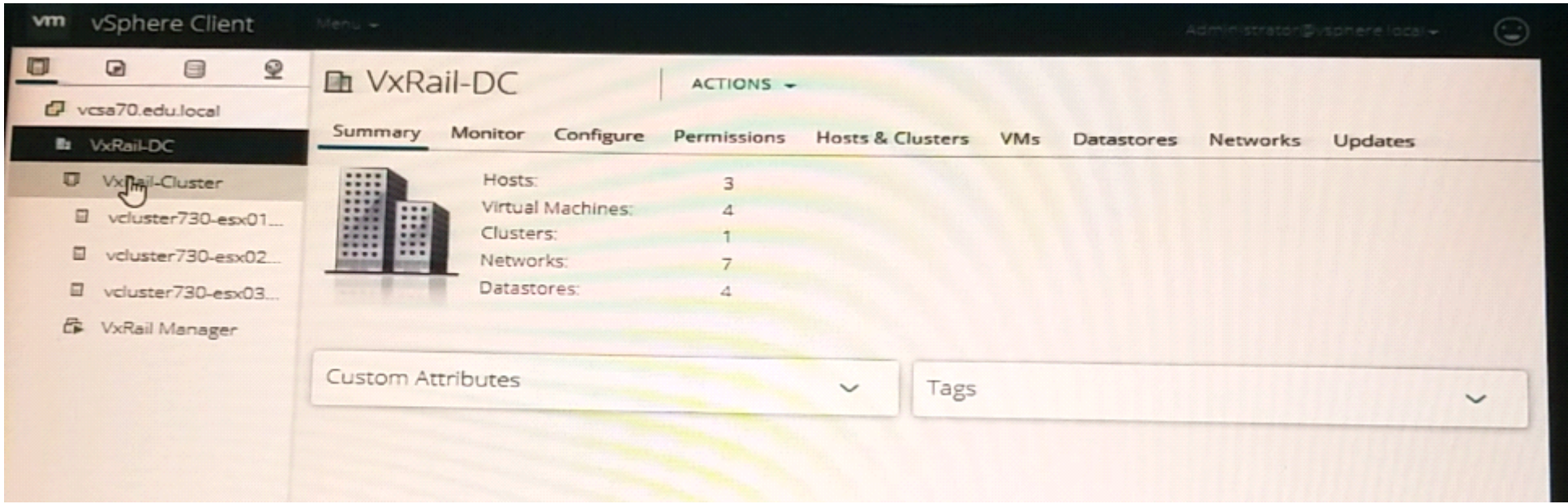
Tags

Health Status

Overall Health 🟢 Good

APPLIANCE MANAGEMENT

vCenter HA



- vcsa70.edu.local
- VxRail-DC
- VxRail-Cluster**
- vcluster730-esx01...
- vcluster730-esx02...
- vcluster730-esx03...
- VxRail Manager

# VxRail-Cluster | ACTIONS

- Summary
- Monitor
- Configure
- Permissions
- Hosts
- VMs
- Datastores
- Networks
- Updates



Total Processors: 48  
Total vMotion Migrations: 0  
Fault Domains:

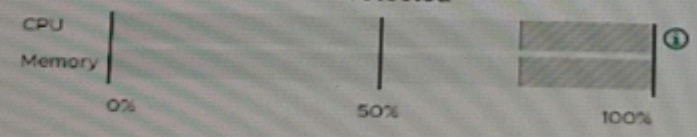


## Related Objects

**Datacenter** | VxRail-DC

## vSphere HA

Protected



CPU reserved for failover:	25 %
Memory reserved for failover:	25 %
Proactive HA:	Disabled
Host Monitoring:	Enabled
VM Monitoring:	Disabled

vSphere DRS

Cluster Consumers

Tags

Cluster Resources

## Custom Attributes

Attribute	Value
VxRail-Cluster-Tag	STANDARD
VxRail-IP	192.168.10.16
VxRail-SSL-THUMBPRINT	79:B6:6B:E3:5F:00:25...
VxRail-VERSION	7.0.100
com.vmware.vcenter.clu...	



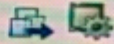
- vcsa70.edu.local
- VxRail-DC
- VxRail-Cluster
- vcluster730-esx01**
- vcluster730-esx02
- vcluster730-esx03
- VxRail Manager

# vcluster730-esx01.edu.local | ACTIONS

- Summary**
- Monitor
- Configure
- Permissions
- VMs
- Datastores
- Networks
- Updates



Hypervisor: VMware ESXi, 7.0.1, 16850804  
 Model: VMware 7,1  
 Processor Type: Intel(R) Xeon(R) CPU E5-2698 v4 @ 2.2 GHz  
 Logical Processors: 16  
 NICS: 4  
 Virtual Machines: 2  
 State: Connected  
 Uptime: 10 days



## Hardware

Manufacturer	VMware, Inc.
Model	VMware7,1
CPU	16 CPUs x 2.2 GHz
Memory	31.01 GB / 48 GB
Virtual flash Resource	0 B / 0 B
Networking	vcluster730-esx01.edu.local
Storage	2 Datastore(s)

## Tags

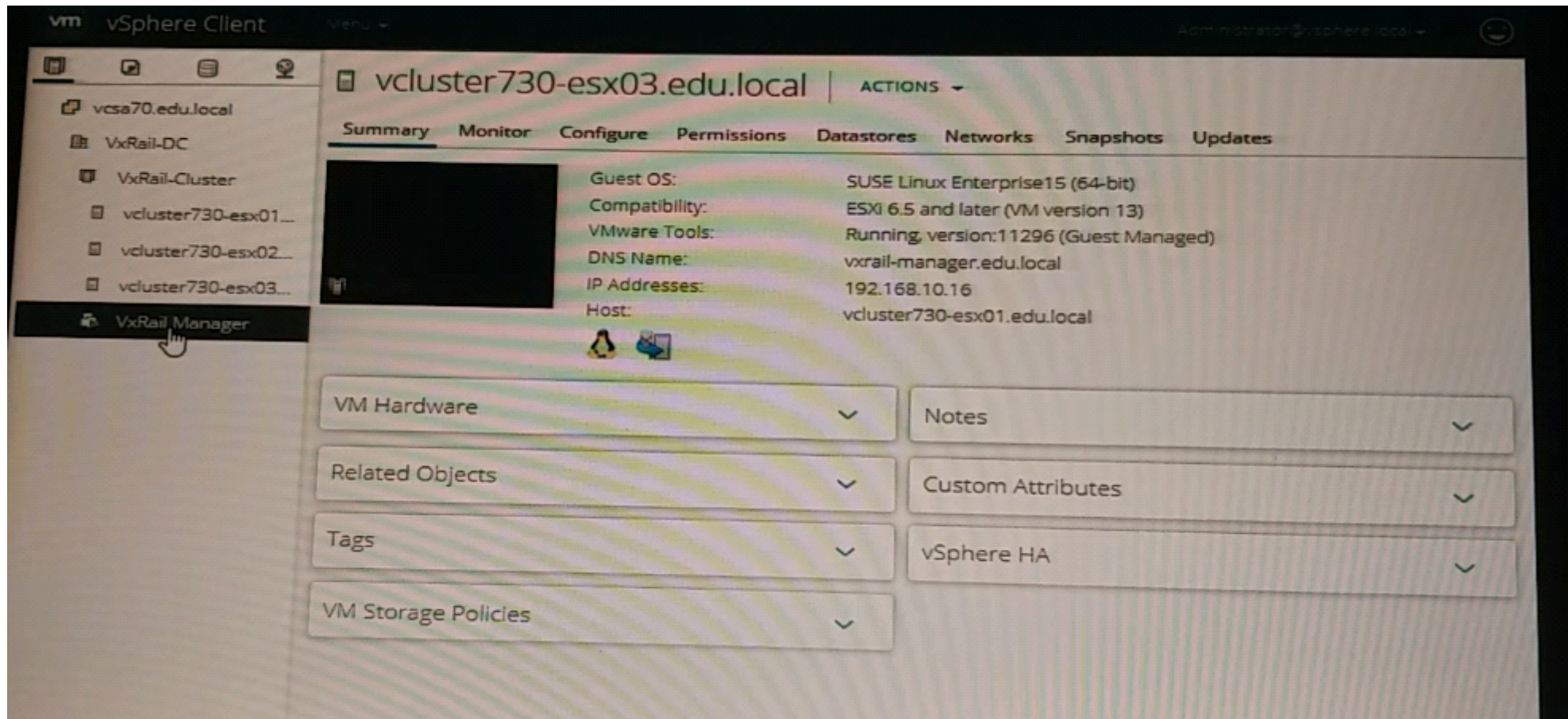
## Configuration

## Related Objects

Cluster

## Custom Attributes

Attribute	Value
AutoDeploy.MachineIdentity	



## Options:

- A- bmc and bios are running older versions
- B- Insufficient number of vSphere licenses



**C-** Firmware of ESXi host needs to be updated

**D-** Invalid vCenter 5server license

**Answer:**

---

D

## Question 10

---

**Question Type: MultipleChoice**

---

A VxRail Cluster has just been deployed. Use the VxRail simulator to determine the Service Tag, Model, and ESXJ IP Address of the first node - vcluster730.esx01.edu.local.

Note: It is necessary to close (x) the simulator window before you can select a response to this question.



- vcsa70.edu.local
- VxRail-DC
- VxRail-Cluster
- vcluster730-esx01...**
- vcluster730-esx02...
- vcluster730-esx03...
- VxRail Manager

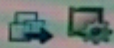
## vcluster730-esx01.edu.local

ACTIONS

- Summary**
- Monitor
- Configure
- Permissions
- VMs
- Datastores
- Networks
- Updates



Hypervisor: VMware ESXi, 7.0.1, 16850804  
Model: VMware 7,1  
Processor Type: Intel(R) Xeon(R) CPU E5-2698 v4 @ 2.2 GHz  
Logical Processors: 16  
NICS: 4  
Virtual Machines: 2  
State: Connected  
Uptime: 10 days



### Hardware

Manufacturer	VMware, Inc.
Model	VMware7,1
CPU	16 CPUs x 2.2 GHz
Memory	31.01 GB / 48 GB
Virtual flash Resource	0 B / 0 B
Networking	vcluster730-esx01.edu.local
Storage	2 Datastore(s)

### Tags

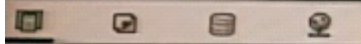
### Configuration

### Related Objects

Cluster VxRail-Cluster

### Custom Attributes

Attribute	Value
AutoDeploy.MachineIdentity	



vcsa70.edu.local | ACTIONS

- vcsa70.edu.local
  - VxRail
  - VxRail-Cluster
    - vcluster730-esx01...
    - vcluster730-esx02...
    - vcluster730-esx03...
  - VxRail Manager

- Summary
- Monitor
- Configure
- Permissions
- Datacenters
- Hosts & Clusters
- VMs
- Datastores
- Networks



Version: 7.0.1  
Build: 17005016  
Last Updated: Nov 24, 2020, 7:04 AM  
Last File-Based Backup: Not scheduled

Clusters: 1  
Hosts: 3  
Virtual Machines: 4

Custom Attributes

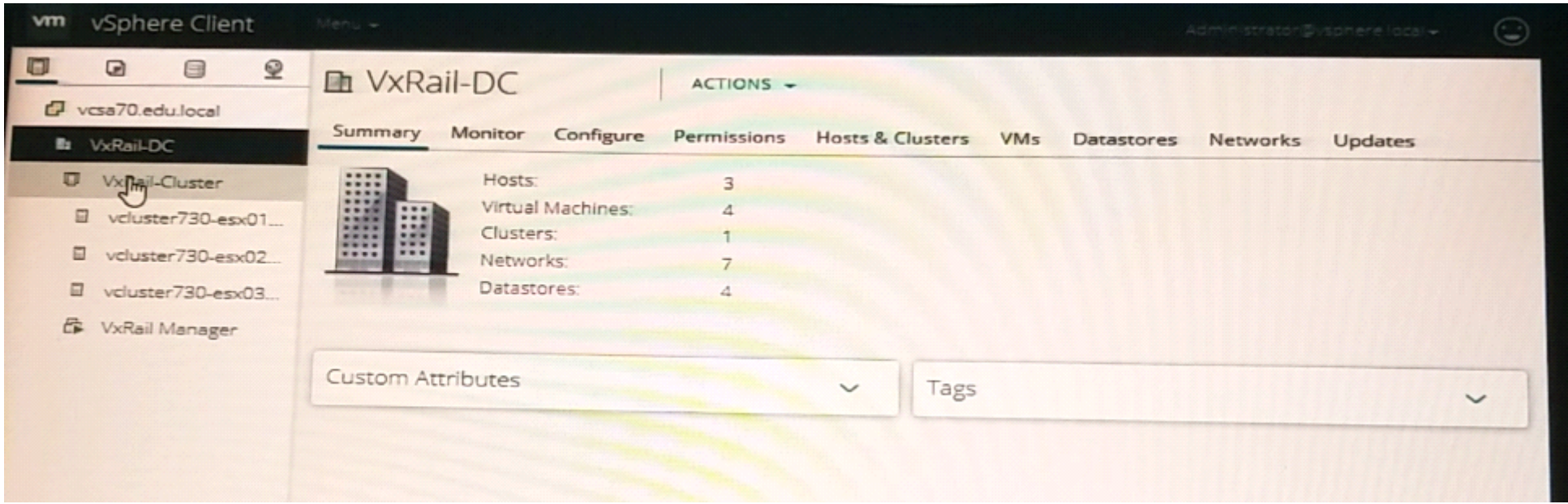
Tags

Health Status

Overall Health 🟢 Good

APPLIANCE MANAGEMENT

vCenter HA



- vcsa70.edu.local
- VxRail-DC
- VxRail-Cluster**
- vcluster730-esx01...
- vcluster730-esx02...
- vcluster730-esx03...
- VxRail Manager

# VxRail-Cluster | ACTIONS

- Summary
- Monitor
- Configure
- Permissions
- Hosts
- VMs
- Datastores
- Networks
- Updates



Total Processors: 48  
Total vMotion Migrations: 0  
Fault Domains:

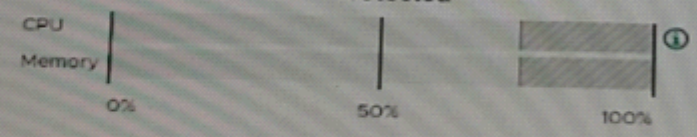


## Related Objects

**Datacenter** | VxRail-DC

## vSphere HA

Protected



CPU reserved for failover: 25 %  
Memory reserved for failover: 25 %  
Proactive HA: Disabled  
Host Monitoring: Enabled  
VM Monitoring: Disabled

vSphere DRS

Cluster Consumers

Tags

Cluster Resources

## Custom Attributes

Attribute	Value
VxRail-Cluster-Tag	STANDARD
VxRail-IP	192.168.10.16
VxRail-SSL-THUMBPRINT	79:B6:6B:E3:5F:00:25...
VxRail-VERSION	7.0.100
com.vmware.vcenter.clu...	



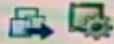
- vcsa70.edu.local
- VxRail-DC
- VxRail-Cluster
- vcluster730-esx01**
- vcluster730-esx02
- vcluster730-esx03
- VxRail Manager

# vcluster730-esx01.edu.local | ACTIONS

- Summary**
- Monitor
- Configure
- Permissions
- VMs
- Datastores
- Networks
- Updates



Hypervisor: VMware ESXi, 7.0.1, 16850804  
 Model: VMware 7,1  
 Processor Type: Intel(R) Xeon(R) CPU E5-2698 v4 @ 2.2 GHz  
 Logical Processors: 16  
 NICS: 4  
 Virtual Machines: 2  
 State: Connected  
 Uptime: 10 days



## Hardware

Manufacturer	VMware, Inc.
Model	VMware7,1
CPU	16 CPUs x 2.2 GHz
Memory	31.01 GB / 48 GB
Virtual flash Resource	0 B / 0 B
Networking	vcluster730-esx01.edu.local
Storage	2 Datastore(s)

## Tags

## Configuration

## Related Objects

Cluster

## Custom Attributes

Attribute	Value
AutoDeploy.MachineIdentity	

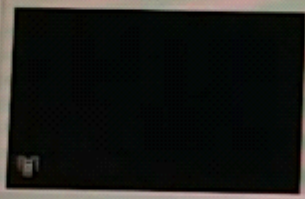


- vcasa70.edu.local
  - VxRail-DC
    - VxRail-Cluster
      - vcluster730-esx01...
      - vcluster730-esx02...
      - vcluster730-esx03...
      - VxRail Manager**

# vcluster730-esx03.edu.local

ACTIONS

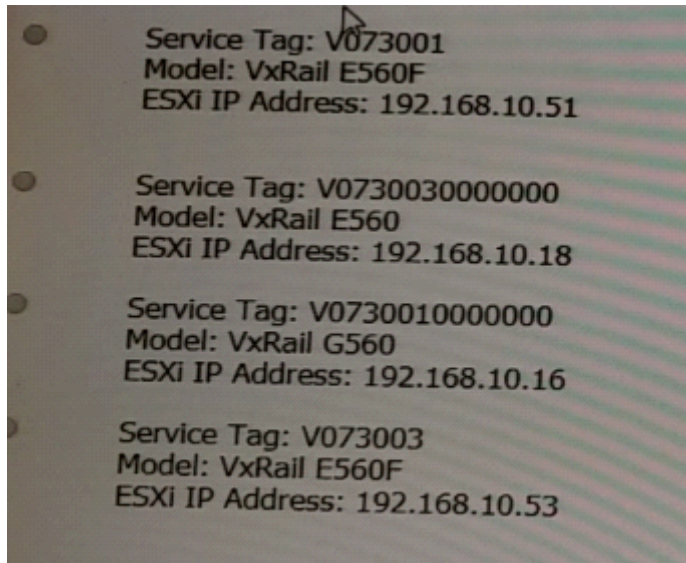
- Summary
- Monitor
- Configure
- Permissions
- Datastores
- Networks
- Snapshots
- Updates



Guest OS: SUSE Linux Enterprise15 (64-bit)  
Compatibility: ESXi 6.5 and later (VM version 13)  
VMware Tools: Running, version:11296 (Guest Managed)  
DNS Name: vxrail-manager.edu.local  
IP Addresses: 192.168.10.16  
Host: vcluster730-esx01.edu.local



- VM Hardware
- Notes
- Related Objects
- Custom Attributes
- Tags
- vSphere HA
- VM Storage Policies



### Options:

---

- A- Option A
- B- Option B
- C- Option C
- D- Option D

### Answer:

---

D



# Question 11

---

**Question Type:** MultipleChoice

---

What environmental components of a 3-node VxRail cluster must be assigned IP addresses?

**Options:**

---

- A- ESXi Mgmt, vCenter, Witness Traffic Separation, and iDRAC
- B- vRealize Log Insight, vSAN, VxRail Manager, and SRS
- C- vSAN, Witness Traffic Separation, vRealize Log Insight, and vMotion
- D- ESXi Mgmt, vSAN, vMotion, and iDRAC

**Answer:**

---

D

**To Get Premium Files for DES-6322 Visit**

**<https://www.p2pexams.com/products/des-6322>**

**For More Free Questions Visit**

**<https://www.p2pexams.com/dell-emc/pdf/des-6322>**

