



Free Questions for E20-260 by dumpshq

Shared by Robertson on 15-04-2024

For More Free Questions and Preparation Resources

Check the Links on Last Page

Question 1

Question Type: MultipleChoice

Refer to the exhibit.

```
IPSEC is UP
Remote Management Server at IP Address 10.31.25.27 is
  reachable
Remote Internal Gateway addresses are reachable

Verifying the VPN status between the management server and
  the cluster witness server...
IPSEC is UP
Cluster Witness Server at IP Address 128.221.254.3 is
  reachable
```

Which command must be used to generate this output?

Options:

A- vpn status

B- ndu pre-check

C- health-check

D- ifconfig -a eth3

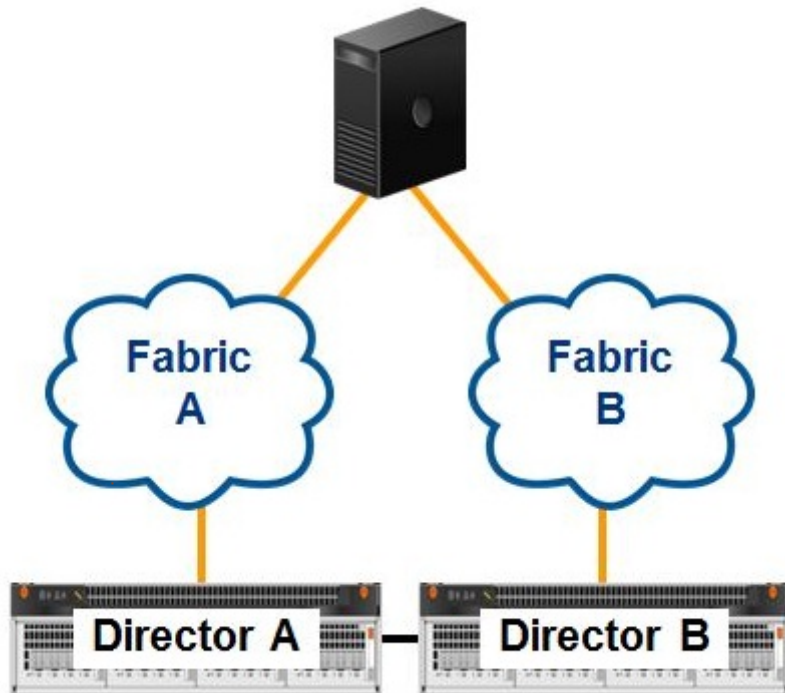
Answer:

A

Question 2

Question Type: MultipleChoice

Refer to the exhibit.



NDU pre-check failed because minimal topology is in use. Which parameter can be added to the ndu start command that will allow the NDU to proceed without error in this situation?

Options:

A- Only the --force option

B- Only the --skip-view-config-check option

C- Both the --skip-sysconfig-check and --skip-view-config-check options

D- Both the --skip-sysconfig-check and --force options

Answer:

C

Question 3

Question Type: MultipleChoice

Refer to the exhibit.

```
10.126.96.19 - PuTTY
VPlexcli:/engines/engine-1-1/directors> version
What          Version          Info
-----
Product Version      Version mismatch (or
                    NDU)
                    Version on one or more directors
                    or Cluster Witness Server does not
                    match mgmt server or an NDU is in
                    progress.
SMSv2            D10.0.0.191.0    -
Mgmt Server Base   D4 MSB 7         -
Mgmt Server Software D10.0.0.215     -
Cluster Witness   D10.0.0.202     Built against GeoSynchrony version
Server Software   - 40.1.163.0-0

VPlexcli:/engines/engine-1-1/directors>
```

You are preparing to upgrade a VPLEX Metro system. You ran the version command to begin the verification process and received the output shown.

What is the most likely reason for the warning?

Options:

- A- The Metadata volume is in an NDU state.
- B- The Cluster Witness is at the wrong version.
- C- The Management Server is at the wrong version.
- D- The directors are in an NDU state.

Answer:

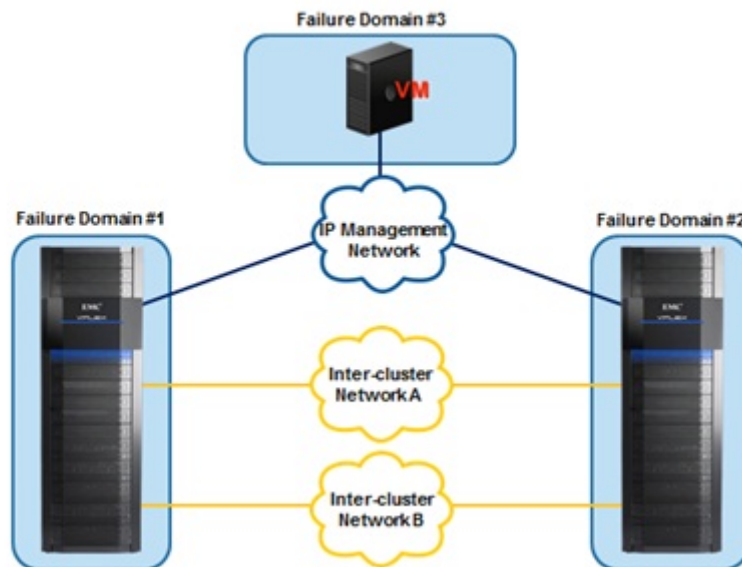
B

Question 4

Question Type: MultipleChoice

Refer to the exhibit.

VPLEX Witness



What is the purpose of VPLEX Witness in a Metro environment?

Options:

- A-** Prevent cluster link failure and stop I/O transfer.
Split consistency groups and failover consistency groups.
- B-** Send notifications and pause I/O transfer.
Initiate vault dump and failover consistency groups.
- C-** Observe state of the clusters and suspend I/O
Execute health check and resume I/O
- D-** Observe the state of the clusters and distinguish link outages.
Intercluster failures and resume or suspend I/O

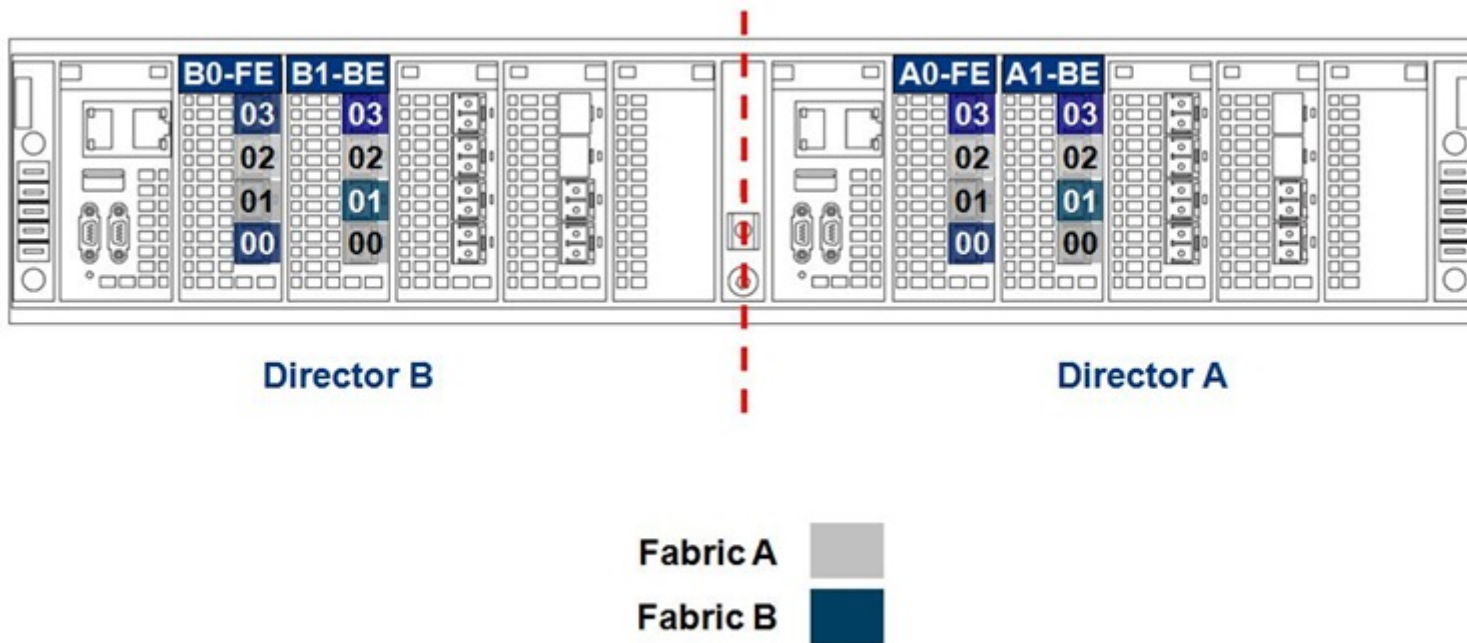
Answer:

D

Question 5

Question Type: MultipleChoice

Refer to the exhibit.



A customer has not followed EMC best practices when cabling their VS2 VPLEX engine. You are asked how to re-cable the engine to adhere to best practices. What is your response?

Options:

A- Swap port 00 with port 01 of module A1-BE and B1-BE

B- Swap port 02 with port 03 of module A0-FE and B0-FE

C- Swap port 00 with port 01 of module A0-FE and B0-FE

D- Swap port 02 with port 03 of module A1-BE and B1-BE

Answer:

C

Question 6

Question Type: MultipleChoice

Refer to the exhibit.

```
Vplexcli:/> configuration show-meta-volume-candidates
```

Name	Capacity	Vendor	IO	Type	Array Name
-----	-----	-----	Status	-----	-----
1.) VPD83T3:60000970000194901160533030314539	78.7G	EMC	alive	traditional	EMC-SYMMETRIX-194901160
2.) VPD83T3:60000970000194901160533030314541	78.7G	EMC	alive	traditional	EMC-SYMMETRIX-194901160
3.) VPD83T3:60000970000194901160533030314542	78.7G	EMC	alive	traditional	EMC-SYMMETRIX-194901245
4.) VPD83T3:60000970000194901160533030314543	78.7G	EMC	alive	traditional	EMC-SYMMETRIX-194901245
5.) VPD83T3:60000970000194901160533030314544	78.7G	EMC	alive	traditional	EMC-SYMMETRIX-194901328
6.) VPD83T3:60000970000194901160533030314545	78.7G	EMC	alive	traditional	EMC-SYMMETRIX-194901328

```
Vplexcli:/> meta-volume create -n Pod7Meta -d
```

Which two metavolume candidates should be used to complete the displayed command?

Options:

- A- 1 and 2
- B- 5 and 6
- C- 1 and 3
- D- 3 and 4

Answer:

C

Question 7

Question Type: MultipleChoice

Refer to the exhibit.



Which tab of the VPLEX Unisphere Management Console GUI contains a link to VPLEX product documentation?

Options:

A- Support

B- Provision Storage

C- Mobility Central

D- System Status

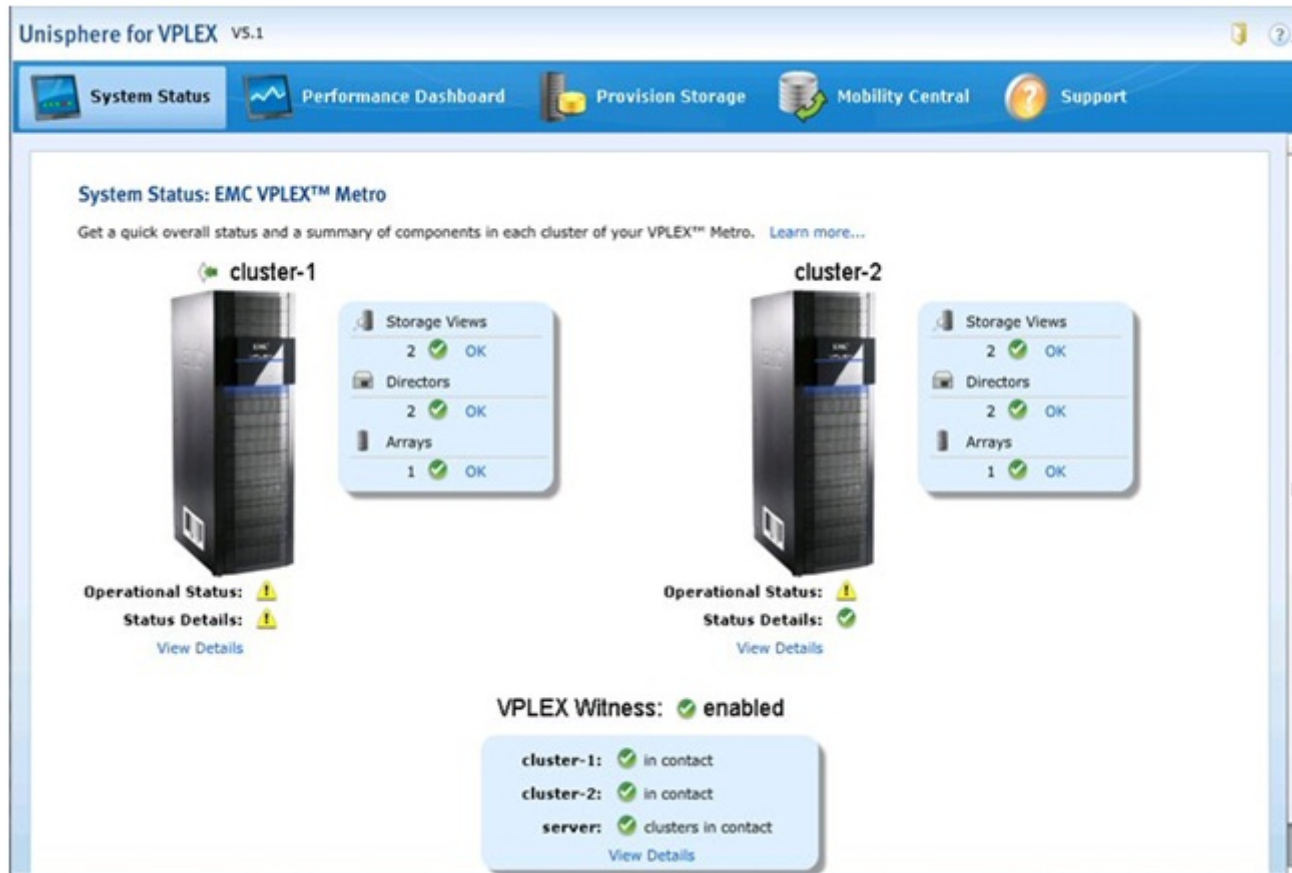
Answer:

A

Question 8

Question Type: MultipleChoice

Refer to the exhibit.



You have opened the VPLEX Unisphere Manager to validate the health of the system.

What is the most likely reason for the Operational Status indicator?

Options:

- A- The VPLEX Witness has detected a WAN link failure.
- B- A component is in a degraded state in the cluster.
- C- Cluster-1 has lost management IP connection to cluster-2
- D- The cluster-1 management server has failed.



Answer:

B

Question 9

Question Type: MultipleChoice

Refer to the exhibit.

Name	Date modified	Type	Size
 director-1-1-A_PERPETUAL_vplex_sys_perf_mon.log	3/27/2013 11:12 AM	LOG File	5,278 KB
 director-1-1-B_PERPETUAL_vplex_sys_perf_mon.log	3/27/2013 11:12 AM	LOG File	8,178 KB

A customer is requesting a performance analysis for their distributed volumes in a Metro configuration to ensure there are no issues with a recent implementation.

What additional files should be collected?

Options:

- A- Perpetual log files from Cluster-2
- B- firmware.log from Cluster-1
- C- Health-Check output from Cluster-2
- D- VPLEX Performance GUI export from both clusters

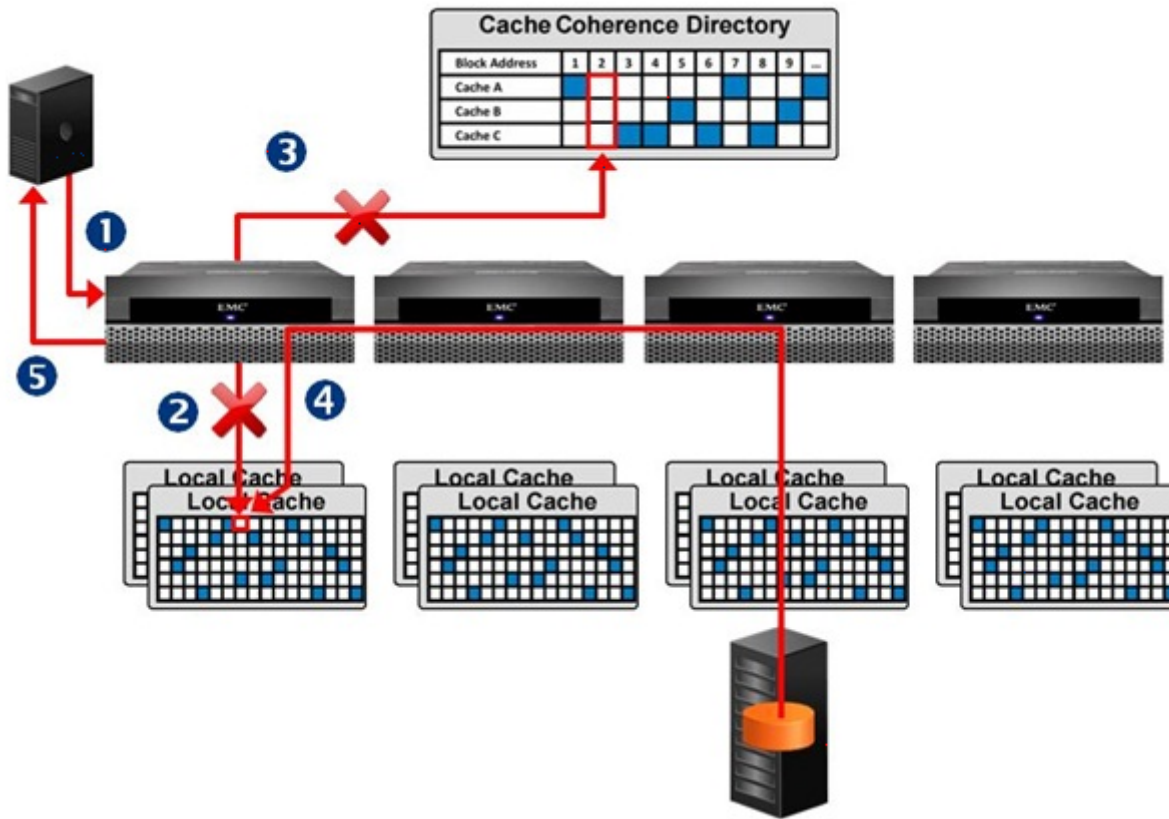
Answer:

A

Question 10

Question Type: MultipleChoice

Refer to the exhibit.



What does this VPLEX cache operation represent?

Options:

A- Local Read Hit

B- Global Read Hit

C- Local Read Miss

D- Global Read Miss

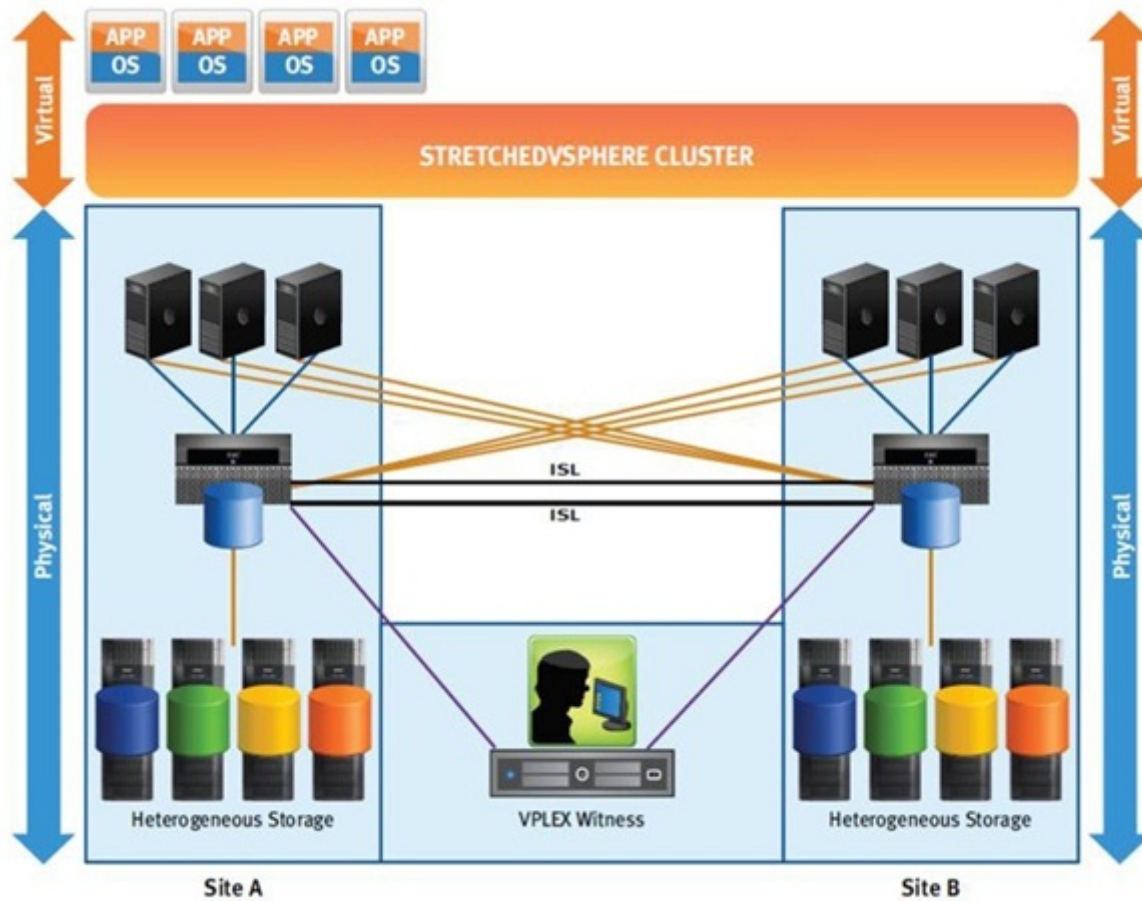
Answer:

D

Question 11

Question Type: MultipleChoice

Refer to the exhibit.



A customer wants to implement a VPLEX Metro High Availability Cross Connect implementation between their two campus sites. What round-trip latency time requirement must be met between Site A and Site B?

Options:

A- < 3 ms

B- < 5 ms

C- < 1 ms

D- < 10 ms

Answer:

C

To Get Premium Files for E20-260 Visit

<https://www.p2pexams.com/products/e20-260>

For More Free Questions Visit

<https://www.p2pexams.com/dell-emc/pdf/e20-260>

