



**Free Questions for E20-260 by go4braindumps**

**Shared by Oneil on 12-12-2023**

**For More Free Questions and Preparation Resources**

**Check the Links on Last Page**

## Question 1

---

**Question Type:** MultipleChoice

---

You are preparing to migrate the topology of an installed VPLEX Local system. What is a supported upgrade path?

### Options:

---

- A- Local to Geo to Global
- B- Local to Metro
- C- Local to Global
- D- Local to Metro to Geo

### Answer:

---

B

## Question 2

---

**Question Type:** MultipleChoice

---

Refer to the exhibit.

```
VPlexcli:/clusters/cluster-1> vault status
=====
Cluster level summary
=====
Cluster:/clusters/cluster-1
Cluster is not vaulting/unvaulting
=====
Director level summary
=====
/engine-1-1/directors/director-1-1-B:
  state: Vault Inactive
/engine-1-1/directors/director-1-1-A:
  state: Vault Inactive
/engine-1-2/directors/director-1-2-B:
  state: Vault Inactive
/engine-1-2/directors/director-1-2-A:
  state: Vault Inactive
```

After a power disruption of 20 seconds in a VPLEX environment, the output of the "vault status" command shows no vaulting processes. Why did this occur?

### Options:

---

- A- The cache vaulting did not exceed the timer period.
- B- It is the expected output, because the command 'vault status' doesn't show information on cache process at all.
- C- Cache vaulting process has already completed.
- D- Cache vaulting process is still running in background and it is not shown until completed.

**Answer:**

---

A

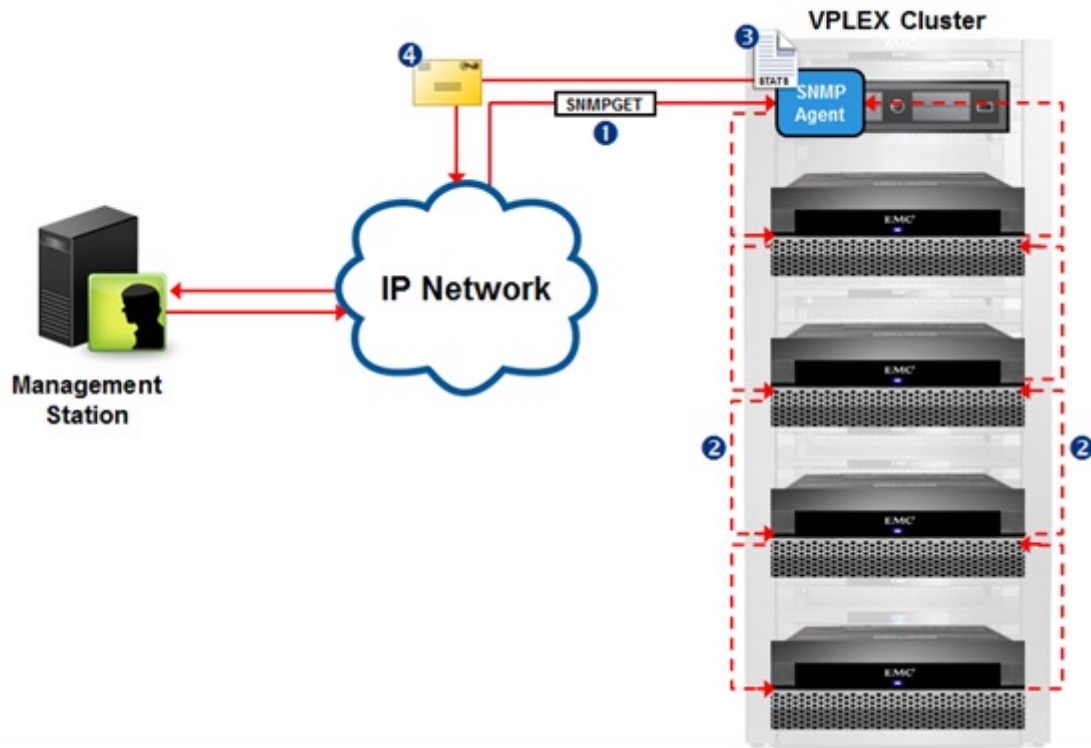
## **Question 3**

---

**Question Type: MultipleChoice**

---

Refer to the exhibit.



Reference the message type shown at point "1". What type of response will be sent back to the SNMP management server from the SNMP Agent?

**Options:**

- A- A poll response containing requested data
- B- A trap response containing requested data

**C-** A poll response that initiates a trap response

**D-** A trap response containing all MIB data

**Answer:**

---

A

## **Question 4**

---

**Question Type: MultipleChoice**

---

Refer to the exhibit.



The customer deleted ext\_2 on a 20 GB LUN in order to make an extent of 10 GB. Why is the customer unable to create a 10 GB extent?

**Options:**

---

**A-** Chunks of the storage need to be contiguous.

**B-** Storage array must be re-discovered.

**C-** ext\_2 cannot be deleted.

**D-** The defrag property is set to false.

**Answer:**

---

A

## Question 5

---

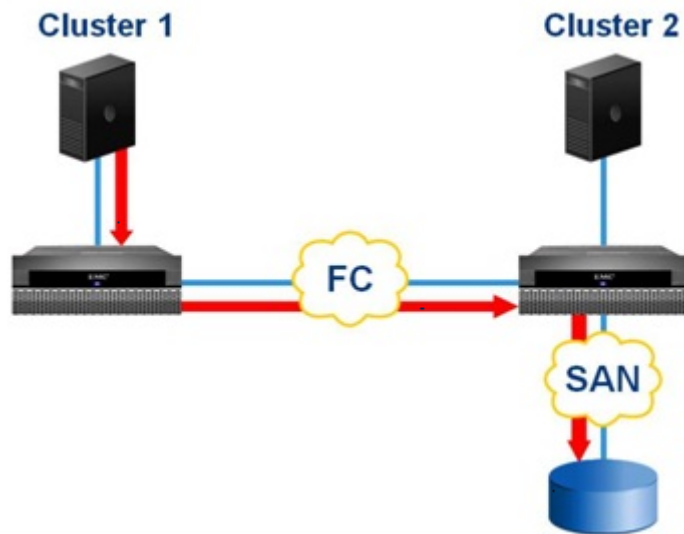
**Question Type:** MultipleChoice

---

Refer

to the exhibit.





A customer needs to provision storage to a host on Cluster 1, but there is no additional local array capacity to allocate. How could the customer facilitate assigning storage to the Cluster 1 host from an array locally connected to Cluster 2?

**Options:**

---

- A- Enable remote access for a Cluster 2 virtual volume.
- B- Add a remote mirror to a Cluster 2 virtual volume.
- C- Create a distributed device from a virtual volume on Cluster 2
- D- Add a virtual volume from Cluster 2 to a distributed consistency group.

**Answer:**

---

A

## Question 6

---

**Question Type:** MultipleChoice

---

A VPLEX administrator claims a 100GB Storage Volume that is thin provisioned on the storage array and has 25GB physically allocated and creates a 1:1 encapsulated virtual volume. After a local data mobility job for that Virtual Volume, the storage array administrator notices that the allocated capacity has increased to 100GB. Why did this happen?

### Options:

---

- A-** The destination Storage Volume was not claimed with the thin-rebuild parameter in VPLEX.
- B-** VPLEX does not support thin devices.
- C-** Neither the source nor the destination Storage Volume were claimed with the thin-rebuild parameter in VPLEX.
- D-** The source Storage Volume was not claimed with the thin-rebuild parameter in VPLEX.

### Answer:

---

A

## Question 7

---

**Question Type:** MultipleChoice

---

Which is a best practice recommended for VPLEX Metro inter-cluster WAN settings?

### Options:

---

- A- Always use the defaults
- B- Allow auto-negotiation to select the optimal transmission rate
- C- Always set the MTU to 9000
- D- Tune the network parameters according to the specifics of the configuration

### Answer:

---

D

## Question 8

---

**Question Type:** MultipleChoice

---

How many management Ethernet connections exist between the management server and the engines?

**Options:**

---

A- 2

B- 4

C- 6

D- 8

**Answer:**

---

A

## Question 9

---

**Question Type: MultipleChoice**

---

Click on the calculator in the upper left corner. You have a perpetual performance monitor running on director 1-1-A . The data being monitored is growing at a rate of 2 MB per minute. At the current data rate, how far back in time will this monitor be able to reach?

**Options:**

---

A- 50 minutes

B- 5 minutes

C- 5 hours

D- 50 hours

**Answer:**

---

A

## Question 10

---

**Question Type:** MultipleChoice

---

Which type of statistics are used to track latencies, determine median, mode, percentiles, minimums and maximums?

**Options:**

---

A- Buckets

**B-** Counters

**C-** Readings

**D-** Monitors

**Answer:**

---

A

**To Get Premium Files for E20-260 Visit**

**<https://www.p2pexams.com/products/e20-260>**

**For More Free Questions Visit**

**<https://www.p2pexams.com/dell-emc/pdf/e20-260>**

