



## Download AACN CCRN-Adult Exam Dumps Free

Shared by Jenkins on 17-06-2026

**For More Free Questions and Preparation Resources**

Check the Links on Last Page



## Question 1

---

Question Type: MultipleChoice

---

The family of a patient requests permission to administer traditional herbs to the patient. Which of the following should be the nurse's first action?

Options:

- A- Inform the family that herbal therapy is not appropriate in the hospital.
- B- Consult with the pharmacist on the effects of the specific herbs.
- C- Allow the patient to take the herbs because they are natural.
- D- Obtain an order for the herbs.

Answer:

---

B

Explanation:

---

Verified Answer: B. Consult with the pharmacist on the effects of the specific

## Question 2

---

Question Type: MultipleChoice

---

An unconscious patient in hepatic failure secondary to alcoholism becomes acutely hypoglycemic. Glucagon administration is contraindicated for this patient because glucagon

Options:

- A- interferes with lactulose (Cephulac) therapy.
- B- produces additional sedative effects.
- C- is ineffective when hepatocytes are damaged.
- D- causes rebound hyperglycemia.

Answer:

---

C

### Explanation:

---

Glucagon is a hormone that stimulates the liver to release glucose from glycogen stores or from gluconeogenesis. However, when the hepatocytes are damaged by alcoholism or other causes of hepatic failure, glucagon is ineffective because the liver cannot respond to its signal. Glucagon administration is contraindicated for hypoglycemic patients with hepatic failure because it will not raise their blood glucose levels and may worsen their acidosis and electrolyte imbalance<sup>123</sup>

[Hypoglycemia in Patients With Hepatic Failure - PubMed](#)

[Glucagon - Wikipedia](#)

[Frontiers | Glucagon Receptor Signaling and Lipid Metabolism](#)



## Question 3

---

**Question Type:** MultipleChoice

---

A patient who sustained acute head trauma exhibited intermittent unconsciousness prior to admission. The patient is disoriented initially and exhibits rapid deterioration in neurological status shortly after admission. X-rays reveal a right temporal bone fracture, and a diagnosis of epidural hematoma is made. The deterioration in the patient's condition is most likely associated with

### Options:

---

- A- arterial bleeding.
- B- venous bleeding.
- C- clot formation.
- D- intracranial aneurysm.



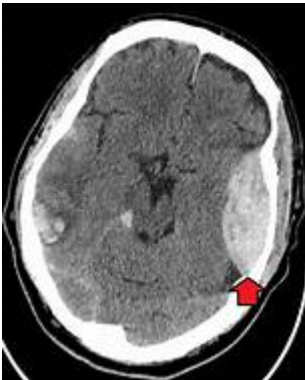
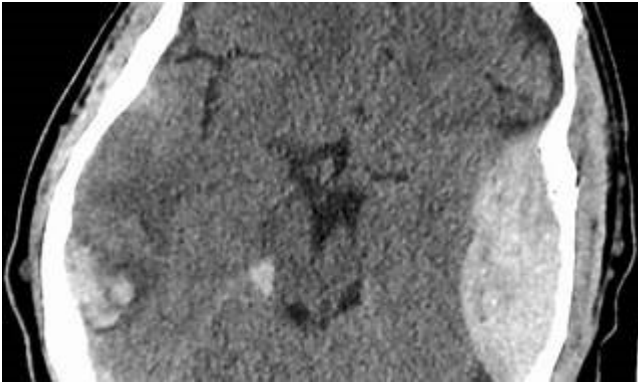
### Answer:

---

A

### Explanation:

---



P2P  
exams

An epidural hematoma is a collection of blood that forms between the skull and the dura mater, the outermost layer of the meninges that cover the brain. The most common cause of an epidural hematoma is a head injury that fractures the temporal bone and tears the middle meningeal artery, which runs along the inner surface of the skull. Arterial bleeding is under high pressure and can rapidly expand the hematoma, compressing the brain and causing neurological deterioration. A typical symptom of an epidural hematoma is a brief loss of consciousness followed by a lucid interval and then a rapid decline in consciousness and brain function. This condition requires urgent surgical evacuation of the hematoma to prevent brain damage or death<sup>12</sup>. Venous bleeding, clot formation, and intracranial aneurysm are not the main factors associated with the deterioration of the patient's condition in this case.

## Question 4

P2P  
exams

Question Type: MultipleChoice

A patient with cardiogenic shock for several days has been managed aggressively with vasopressor and inotrope therapies. Which option best indicates organ dysfunction from hypoperfusion?

Options:

- A- decreased insulin requirements and abdominal pain
- B- elevated creatinine and fever

- C- abdominal pain and elevated creatinine
- D- fever and decreased insulin requirements

Answer:

---

C

Explanation:

---

In the context of cardiogenic shock managed with vasopressor and inotrope therapies, organ dysfunction from hypoperfusion can manifest as elevated creatinine and abdominal pain. Elevated creatinine indicates renal impairment, a common result of poor perfusion to the kidneys. Abdominal pain can indicate hypoperfusion to the gastrointestinal tract, leading to ischemic bowel or other GI complications. These symptoms are direct indicators of hypoperfusion and organ dysfunction. Reference: = CCRN Exam Handbook, AACN Adult CCRN Certification Review Course

## Question 5

---

Question Type: MultipleChoice

---

A 22-year-old trauma patient sustained multiple fractures after a fall. The patient fell 50 feet from a cliff while rock climbing without a harness. The patient is intubated and sedated with casts to bilateral lower extremities. The nurse should recognize that young adults are

Options:

---

- A- more likely to engage in risk-taking behaviors.
- B- developmentally vulnerable to peer pressure in extreme sports.
- C- working through trust issues that cause them to test limits.
- D- influenced by long-time intervals spent in virtual reality.

Answer:

---

A

## Question 6

---

Question Type: MultipleChoice

---

A patient with a history of six cardiac catheterizations relates that he has received differing instructions about the duration of required bedrest after the procedure. To further investigate this issue, which of the following is a nurse's best action?

### Options:

---

- A- Ask about obtaining an independent evaluation of unit outcomes.
- B- Conduct an informal chart review and outcome evaluation of patients treated with different bedrest protocols.
- C- Review recent published research about bedrest protocols.
- D- Ask the nursing supervisor to request standardized physician orders for patients who have undergone catheterization.

### Answer:

---

C

### Explanation:

---

The nurse's most appropriate action is to review recent published research about bedrest protocols, as this would provide the nurse with the most current and reliable evidence to guide clinical practice and improve patient outcomes. Bedrest protocols after cardiac catheterization may vary depending on the type of access site, the use of closure devices, the patient's risk factors, and the clinician's preference. However, there is a growing body of research that supports early ambulation and shorter bedrest duration to reduce the risk of complications, such as bleeding, hematoma, back pain, and venous thromboembolism, and to enhance patient comfort and satisfaction<sup>123</sup>. Asking about obtaining an independent evaluation of unit outcomes, conducting an informal chart review and outcome evaluation of patients treated with different bedrest protocols, or asking the nursing supervisor to request standardized physician orders for patients who have undergone catheterization are not the most appropriate actions, as they may not reflect the best available evidence, may be biased or incomplete, or may not address the patient's concern.

1: Bedrest After Cardiac Catheterization: A Systematic Review and Meta-analysis<sup>4</sup>, p. 1-2.

2: Early Ambulation After Cardiac Catheterization: A Literature Review, p. 1-2.

3: Bed Rest After Cardiac Catheterization: A Review of the Evidence, p. 1-2.

## Question 7

---

Question Type: MultipleChoice

---

A patient with type 1 diabetes admitted for DKA for the third time in 6 months reports not following the medication plan prescribed by the endocrinologist.

Which of the following strategies should a nurse use first?

Options:

- A- Discuss ability to pay for medications and supplies.
- B- Provide low-literacy materials for diabetic education.
- C- Assure scheduled follow-up medical visits prior to discharge.
- D- Consult the diabetes nurse educator.

Answer:

---

A

Explanation:

---

For a patient with type 1 diabetes admitted for diabetic ketoacidosis (DKA) who reports not following the prescribed medication plan, assessing the patient's ability to afford medications and supplies is crucial. Financial barriers are a common reason for non-adherence to treatment plans. Addressing these barriers can help the healthcare team provide the necessary resources or support to ensure the patient can follow the prescribed regimen, potentially preventing future hospitalizations. Reference: =

CCRN (Adult) Certification Review Course Online: Behavioral/Psychosocial.

[American Association of Critical-Care Nurses \(AACN\). \(2024\). CCRN Exam Handbook. Retrieved from AACN CCRN Exam Handbook](#)

[Adult CCRN/CCRN-E/CCRN-K Certification Review Course Online. AACN](#)

To Get Premium Files for CCRN-Adult Visit

<https://www.p2pexams.com/products/ccrn-adult>

For More Free Questions Visit

<https://www.p2pexams.com/aacn/pdf/ccrn-adult>

**20%**  
**DISCOUNT**

**P2P**  
exams