



Download Nokia 4A0-114 Exam Dumps Free

Shared by Ellis on 17-06-2026

For More Free Questions and Preparation Resources

Check the Links on Last Page



Question 1

Question Type: MultipleChoice

Which of the following statements about BGP is FALSE?

Options:

- A- BGP uses Hello messages to dynamically discover BGP peers.
- B- To establish a BGP session, a TCP session must first be established between the two routers.
- C- BGP uses the OPEN message to exchange capability parameters between routers.
- D- BGP was originally designed as an exterior routing protocol.

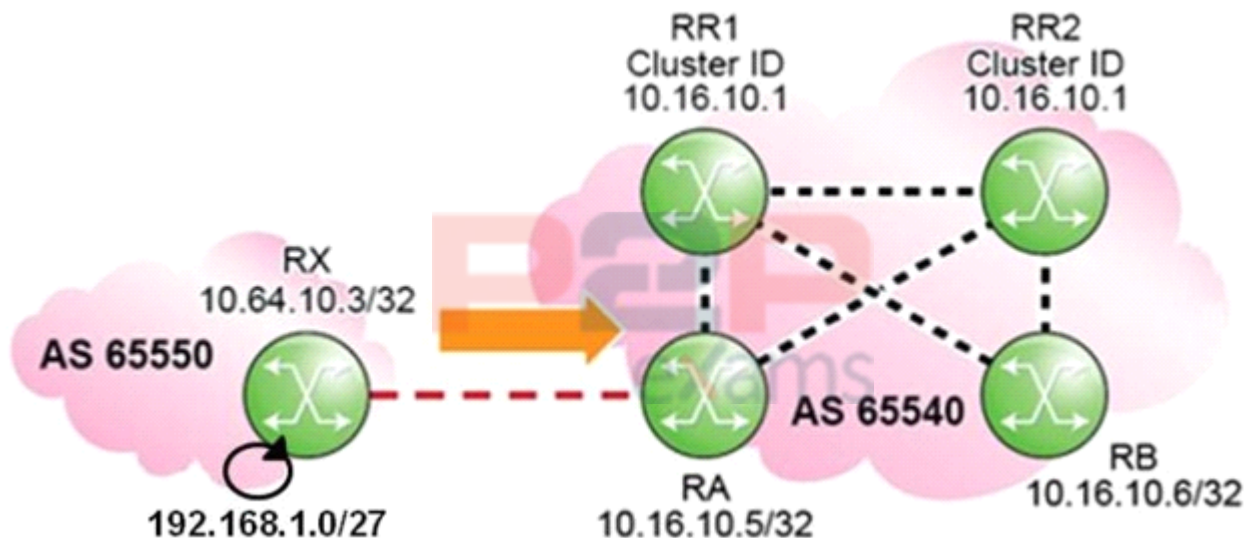
Answer:

D

Question 2

Question Type: MultipleChoice

Click the exhibit.



Routers RR1 and RR2 are route reflectors with the same Cluster-ID. How does router RA treat the updates for prefix 192.168.1.0/27 received from routers RR1 and RR2?

Options:

- A- Router RA prefers the update received from router RR1.
- B- Router RA prefers the update received from router RR2.
- C- Router RA flags both updates as invalid.
- D- Router RA accepts both updates and flags them as used.

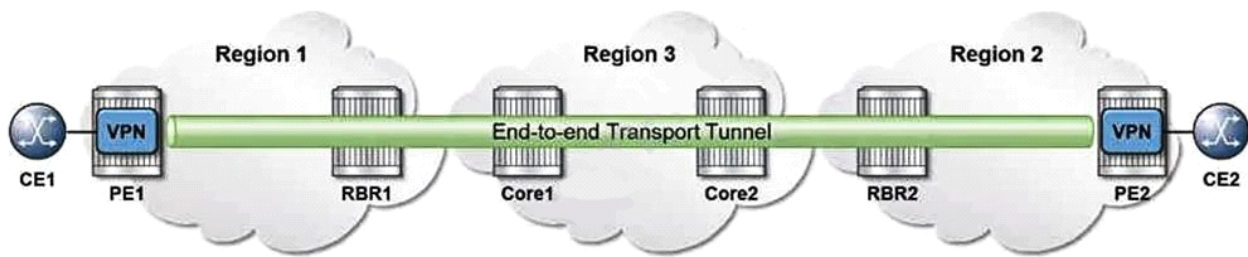
Answer:

C

Question 3

Question Type: MultipleChoice

In the diagram below, an end-to-end transport tunnel needs to be established between PE1 and PE2 using MP-BGP. Which of the following items is NOT required?



Options:

- A- MP-BGP address families label-ipv4 or label-ipv6 need to be supported on each of the edge routers.
- B- Either RSVP, LDP, or segment routing tunnels need to be established between regions.
- C- Either RSVP, LDP, or segment routing tunnels need to be established within each region.
- D- Each PE router needs to advertise an IP address as a labeled BGP route to identify the tunnel endpoint.

Answer:

D

To Get Premium Files for 4A0-114 Visit

<https://www.p2pexams.com/products/4a0-114>

For More Free Questions Visit

<https://www.p2pexams.com/nokia/pdf/4a0-114>

20%
DISCOUNT

P2P
exams