



Free Questions for DES-1221 by dumpshq

Shared by Warren on 12-12-2023

For More Free Questions and Preparation Resources

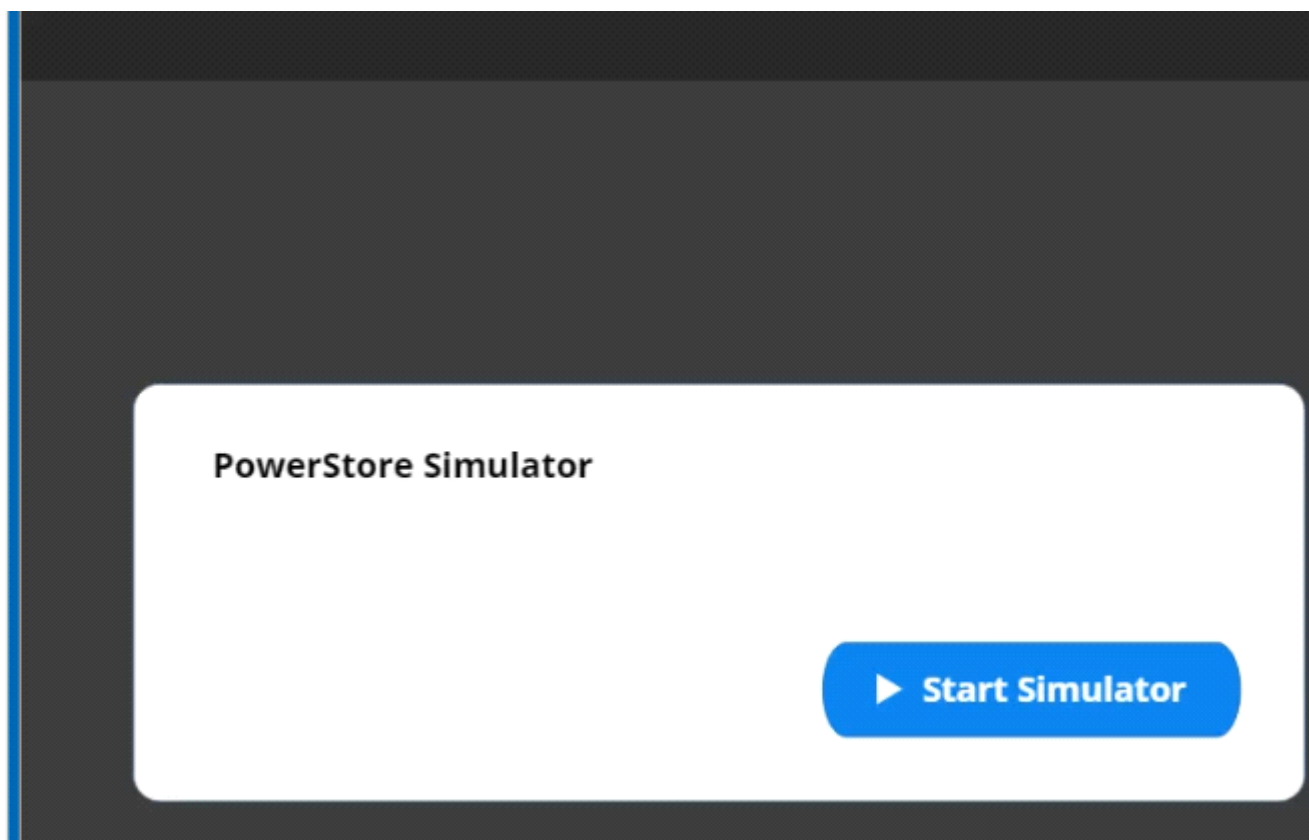
Check the Links on Last Page

Question 1

Question Type: MultipleChoice

In a PowerStore T source cluster, create a 100GB volume with name "Prod_vol" and set a protection policy to replicate the volume with RPO 30 minutes to a destination cluster. The destination cluster is already configured. When you have finished using the simulator, click Next.

In a PowerStore T source cluster, create a 100GB volume with name "Prod_vol". Set its protection policy to replicate the volume with an RPO of 30 minutes to a destination cluster. The destination cluster is already configured. When you have finished using the simulator, click **Next**.



Options:

A- Explanation:

Below are the exhibits solution for this simulation.

The screenshot displays the Dell EMC PowerStore Cluster2 dashboard. The top navigation bar includes 'Dashboard', 'Monitoring', 'Compute', 'Storage', 'Protection' (highlighted with a red box), 'Migration', 'Hardware', and 'Settings'. The main content area is divided into several sections:

- OVERVIEW:** Shows 1 Appliance, 0 Alerts (Critical, Major, Minor), and 0 Watching items.
- CAPACITY:** Shows 0.3% Free capacity (6.1 TB) and 6.1 TB Physical capacity.
- PERFORMANCE:** Shows Latency at 203 µs, IOPS at 0 kiOPS, and Bandwidth at 1.1 MB/s.
- Cluster2 Summary:** A grid of metrics for Block and File systems, including Volume Groups, Volumes, Hosts, File Systems, SMB Shares, and NFS Exports, all showing 0.
- Watchlist:** A section with a message: "There are no items in your watchlist. Click the 'More Actions' button on a list page to add it to your watchlist." A mouse cursor is pointing at a yellow dot in the top right corner of this section.
- Alerts:** A section with a message: "There are no Critical alerts." It also shows 0 alerts for Critical, Major, Minor, and Info levels.

OVERVIEW

Appliances: 1
Alerts: 0 (Critical), 0 (Major), 0 (Minor)
Watching: 0

- Replication
- Remote Systems
- Protection Policies

Physical: 6.1 TB

PERFORMANCE

Latency: 203 μs
IOPS: 0 kIOPS
Bandwidth: 1.1 MB/s

Cluster2

Block

- Volume Groups: 0
- Volumes: 0
- Hosts: 0

File

- File Systems: 0
- SMB Shares: 0
- NFS Exports: 0

Alerts

CRITICAL: 0
MAJOR: 0
MINOR: 0
INFO: 0

There are no Critical alerts

Watchlist

There are no items in your watchlist.
Click the 'More Actions' button on a list page to add it to your watchlist.

Protection

Protection Policies

Protection Policies

Snapshot Rules

Replication Rules

CREATE DELETE

| Name | Snapshot Rules | Replication Rule | Applied to Volume | Applied to Volume Group |
|------|----------------|------------------|-------------------|-------------------------|
|------|----------------|------------------|-------------------|-------------------------|

There are no protection policies.

Click the [CREATE](#) button to add a protection policy.

Create Protection Policy

Policy Properties

Name

Description (Optional)

Snapshot Rules

[+ CREATE](#)

| Name | Days | Frequency/ Start Time | Retention | Policies | File Snapshot Access Type |
|------|------|--------------------------|-----------|----------|------------------------------|
| | | | | | |

Replication Rules

Create Protection Policy



Snapshot Rules

+ CREATE

| Name | Days | Frequency/ Start Time | Retention | Policies | File Snapshot Access Type |
|------|------|--------------------------|-----------|----------|------------------------------|
|------|------|--------------------------|-----------|----------|------------------------------|

Replication Rules

+ CREATE

| Name | Destination | RPO | RPO Alert Threshold | Policies |
|------|-------------|-----|---------------------|----------|
|------|-------------|-----|---------------------|----------|

CANCEL

APPLY

Create Protection Policy

Snapshot Rules

+ CREATE

| Name | Days | Frequency/ Start Time |
|------|------|--------------------------|
|------|------|--------------------------|

Replication Rules

+ CREATE

| Name | Destination |
|------|-------------|
|------|-------------|

Create Replication Rule ×

General Properties

Rule Name

rep1

Destination

Cluster1

Recovery Point Objective (RPO)

RPO

30 minutes

Alert Threshold

15 minutes

CANCEL

CREATE

Create Protection Policy



Enter Description

Snapshot Rules

+ CREATE

| Name | Days | Frequency/ Start Time | Retention | Policies | File Snapshot Access Type |
|------|------|--------------------------|-----------|----------|------------------------------|
|------|------|--------------------------|-----------|----------|------------------------------|

Replication Rules

+ CREATE

| Name | Destination | RPO | RPO Alert Threshold | Policies |
|--|-------------|------------|---------------------|----------|
| <input checked="" type="checkbox"/> rep1 | Cluster1 | 30 minutes | 15 minutes | 0 |

CANCEL

APPLY

Protection

Protection Policies

Protection Policies

+ CREATE

DELETE

Snapshot Rules

Replication Rules

| Name | Snapshot Rules | Replication Rule | Applied to Volume | Applied to Volume Group |
|-----------------------------------|----------------|------------------|-------------------|-------------------------|
| <input type="checkbox"/> Prod-Rep | 0 | 1 | 0 | 0 |



Protection

Pro

Protection Policies

+ CREATE

Snapshot Rules

Replication Rules

| Name | Snapshot Rules | Replication Rule | Applied to Volume | Applied to Volume Group |
|--------------------------|----------------|------------------|-------------------|-------------------------|
| <input type="checkbox"/> | 0 | 1 | 0 | 0 |

- Volumes
- Volume Groups
- Storage Containers
- File Systems
- NAS Servers

DELL EMC PowerStore Cluster2

Dashboard Monitoring Compute Storage Protection Migration Hardware Settings

Protection

Protection Policies

- Snapshot Rules
- Replication Rules

Pro

- Volumes
- Volume Groups
- Storage Containers
- File Systems
- NAS Servers

| Name | Replication Rule | Applied to Volume | Applied to Volume Group |
|------|------------------|-------------------|-------------------------|
| | 0 | 1 | 0 |

DELL EMC PowerStore Cluster2

Dashboard Monitoring Compute Storage Protection Migration Hardware Settings

Volumes

+ CREATE MODIFY DELETE MORE ACTIONS

| Name | WWN | Logical Used | Provisioned | Host Mappings | Protection Policy | Performance Policy | Volume Group |
|--|-----|--------------|-------------|---------------|-------------------|--------------------|--------------|
| There are no Volumes | | | | | | | |
| Click the CREATE button to add a volume. | | | | | | | |

Create Volumes



Properties

Host Mappings

Summary

General

Name (Or Prefix)

Prod_vol

Description (Optional)

Enter Description

Additional Properties

Associated Volume Group (Optional)

--

SELECT

Volume Protection Policy (Optional)

--

None

Prod-Rep

Quantity

1

Size

100

GB

CANCEL

FINISH

NEXT

Create Volumes



Properties

Host Mappings

Summary

General

Name (Or Prefix)

Prod_vol

Description (Optional)

Enter Description

Additional Properties

Associated Volume Group (Optional)

-- SELECT

Volume Protection Policy (Optional)

Prod-Rep

Volume Performance Policy

Medium

Quantity

1

Size

100

GB

CANCEL

FINISH

NEXT

Create Volumes



Properties

Host Mappings

Summary

Available Hosts/Host Groups

Select the hosts or host groups to be mapped to your volume.

| Name | OS | Type |
|------|----|------|
| | | |

Logical Unit Number

The logical unit number is used to help your host(s) identify the volume to which they are mapped. Provide a specific logical unit number or have it generated for you.

Generate Automatically Provide a Logical Unit Number

i A unique logical unit number will be generated automatically for your host.

CANCEL

BACK

NEXT

Create Volumes



| | |
|---------------------------|----------------------|
| Total Size | 100 GB |
| Placement | Cluster2-appliance-1 |
| Host/Host Groups | 0 |
| Volume Group | -- |
| Performance Policy | Medium |
| Protection Policy | Prod-Rep |

The following volumes will be created:

- Prod_vol

Dell EMC PowerStore Cluster2

Dashboard Monitoring Compute Storage Protection Migration Hardware Settings

Volumes

+ CREATE MODIFY DELETE MORE ACTIONS

| Name | WWN | Logical Used | Provisioned | Host Mappings | Protection Policy | Performance Policy | Volume Group |
|-----------------------------------|--------------------------------------|--------------|-------------|---------------|-------------------|--------------------|--------------|
| <input type="checkbox"/> Prod_vol | naa.68ccf098003754a14973b356156c6faf | 0 GB | 100 GB | 0 | Prod-Rep | Medium | |

Answer:

A

Question 2

Question Type: MultipleChoice

Use the simulator to determine how many logical ports are currently marked for replication on the PowerStore appliance.

Note: It is necessary to close (x) the simulator window before you can select a response to this question.

Simulator:

DELL EMC PowerStore Cluster2

Dashboard Monitoring Compute Storage Protection Migration Hardware Settings

OVERVIEW

Appliances: 1 | Alerts: 0 (Critical), 0 (Major), 0 (Minor) | Watching: 0

CAPACITY

Free: 6.1 TB | Physical: 6.1 TB | 0.3%

PERFORMANCE

Latency: 203 μ s | IOPS: 0 kIOPS | Bandwidth: 1.1 MB/s

Cluster2

Block

- 0 Volume Groups
- 0 Volumes
- 0 Hosts

File

- 0 File Systems
- 0 SMB Shares
- 0 NFS Exports

Alerts

0 CRITICAL | 0 MAJOR | 0 MINOR | 0 INFO

There are no Critical alerts

Watchlist

There are no items in your watchlist. Click the 'More Actions' button on a list page to add it to your watchlist.

OVERVIEW

Appliances: 1
Alerts: 0 (Critical), 0 (Major), 0 (Minor)
Watching: 0

- Replication
- Remote Systems
- Protection Policies

Physical: 6.1 TB

PERFORMANCE

Latency: 203 μ s
IOPS: 0 kIOPS
Bandwidth: 1.1 MB/s

Cluster2

Block

- 0 Volume Groups
- 0 Volumes
- 0 Hosts

File

- 0 File Systems
- 0 SMB Shares
- 0 NFS Exports

Alerts

0 CRITICAL, 0 MAJOR, 0 MINOR, 0 INFO

Watchlist

There are no items in your watchlist.
Click the 'More Actions' button on a list page to add it to your watchlist.

There are no Critical alerts

Hardware

APPLIANCES

PORTS

+ ADD MODIFY MORE ACTIONS ▾

| Name | Alerts | Model | Service Tag | Express Service Code | Status | IP Address |
|---------------------|--------|------------------|-------------|----------------------|--------|--------------|
| Cluster2-appliance1 | | PowerStore 1000T | 2AR73V3 | 3050642594 | Online | 192.168.1.41 |

Hardware

APPLIANCES

PORTS

| Appliance | Slot/Module | Node | Health of Ports | | | | Speed (Gbps) |
|----------------------|------------------|-------|-----------------|---|---|---|--------------|
| | | | 0 | 1 | 2 | 3 | |
| Cluster2-appliance-1 | ✔ EmbeddedModule | NodeA | ✔ | ⊖ | ○ | ○ | 1 Gbps |
| | | NodeB | ✔ | ⊖ | ○ | ○ | |
| | ✔ 4PortCard | NodeA | ✔ | ✔ | ✔ | ✔ | 25 Gbps |
| | | NodeB | ✔ | ✔ | ✔ | ✔ | |
| | ✔ IoModule0 | NodeA | ⊖ | ⊖ | ⊖ | ⊖ | -- |
| | | NodeB | ⊖ | ⊖ | ⊖ | ⊖ | |
| | ✔ IoModule1 | NodeA | ✔ | ✔ | ✔ | ✔ | 25 Gbps |
| | | NodeB | ✔ | ✔ | ✔ | ✔ | |

Hardware

APPLIANCES

PORTS

- Replication
- Remote Systems

- Protection Policies

| Appliance | Slot/Module | Node | Health of Ports | | | | Speed (Gbps) |
|----------------------|------------------|-------|-----------------|---|---|---|--------------|
| | | | 0 | 1 | 2 | 3 | |
| Cluster2-appliance-1 | ✔ EmbeddedModule | NodeA | ✔ | ⊖ | ○ | ○ | 1 Gbps |
| | | NodeB | ✔ | ⊖ | ○ | ○ | |
| | ✔ 4PortCard | NodeA | ✔ | ✔ | ✔ | ✔ | 25 Gbps |
| | | NodeB | ✔ | ✔ | ✔ | ✔ | |
| | ✔ IoModule0 | NodeA | ⊖ | ⊖ | ⊖ | ⊖ | -- |
| | | NodeB | ⊖ | ⊖ | ⊖ | ⊖ | |
| | ✔ IoModule1 | NodeA | ✔ | ✔ | ✔ | ✔ | 25 Gbps |
| | | NodeB | ✔ | ✔ | ✔ | ✔ | |

Replication

PAUSE FAILOVER

| Session Status | Source System | Source Resource | Destination System | Destination Resource | Type | ETA | Policy |
|----------------|---------------|-----------------|--------------------|----------------------|------|-----|--------|
|----------------|---------------|-----------------|--------------------|----------------------|------|-----|--------|

There are no replications.

Replication

PAUSE FAIL OVER

| Session Status | Source System | Source Resource | Destination System | Destination Resource | Type | ETA | Policy |
|----------------|---------------|-----------------|--------------------|----------------------|------|-----|--------|
|----------------|---------------|-----------------|--------------------|----------------------|------|-----|--------|



There are no replications.

Hardware

APPLIANCES

PORTS

+ ADD

MODIFY

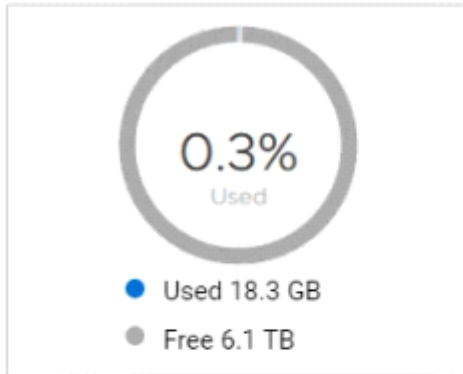
MORE ACTIONS ▾

| Name | Alerts | Model | Service Tag | Express Service Code | Status | IP Address |
|---------------------|--------|------------------|-------------|----------------------|--------|--------------|
| Cluster2-appliance1 | | PowerStore 1000T | 2AR73V3 | 3050642594 | Online | 192.168.1.41 |

Hardware > Cluster2-appliance-1

| | | | | |
|--|--|---|--|---|
| CAPACITY 0.3% Free Physical 6.1 TB 6.1 TB | PERFORMANCE Latency 203 μs IOPS 0 kIOPS Bandwidth 1.1 MB/s | ALERTS Critical 0 Major 0 Minor 0 | PORTS Link Up 18 Link Down 2 | HARDWARE Drives ✓ Rear ✓ Internal ✓ |
|--|--|---|--|---|

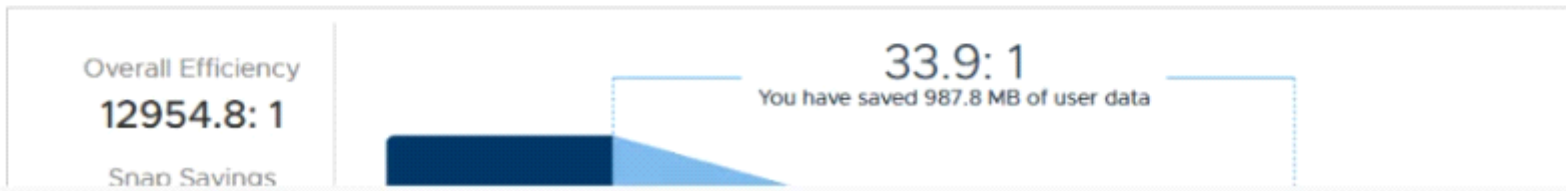
Usage



Historical Usage



Data Savings



Hardware > Cluster2-appliance-1

| | | | | |
|---|--|---|--|---|
| <p>CAPACITY</p> <p>0.3% Free Physical</p> <p>6.1 TB 6.1 TB</p> | <p>PERFORMANCE</p> <p>Latency IOPS Bandwidth</p> <p>203 μs 0 kIOPS 1.1 MB/s</p> | <p>ALERTS</p> <p>Critical Major Minor</p> <p>0 0 0</p> | <p>PORTS</p> <p>Link Up Link Down</p> <p>18 2</p> | <p>HARDWARE</p> <p>Drives Rear Internal</p> <p>✓ ✓ ✓</p> |
|---|--|---|--|---|

MAP STORAGE NETWORK MORE ACTIONS

| Node-Module-Name | Link State | Link Aggregation - Name | Link Aggr... - Mode | Link Aggr... - State | Mapped for Storage | Tagged for Replication |
|--|------------|---------------------------|---------------------|----------------------|--------------------|------------------------|
| <input type="checkbox"/> BaseEnclosure-NodeA-4PortCard-FEPort1 <input type="checkbox"/> BaseEnclosure-NodeA-4PortCard-FEPort0 | | BaseEnclosure-NodeA-bond0 | LACP | | | |
| <input type="checkbox"/> BaseEnclosure-NodeA-4PortCard-FEPort2 | | -- | -- | -- | | -- |
| <input type="checkbox"/> BaseEnclosure-NodeA-4PortCard-FEPort3 | | -- | -- | -- | | -- |
| <input type="checkbox"/> BaseEnclosure-NodeA-EmbeddedModule-MgmtPort | | -- | -- | -- | -- | -- |
| <input type="checkbox"/> BaseEnclosure-NodeA-EmbeddedModule-ServicePort | | -- | -- | -- | -- | -- |
| <input type="checkbox"/> BaseEnclosure-NodeA-IoModule1-FEPort0 | | -- | -- | -- | | -- |
| <input type="checkbox"/> BaseEnclosure-NodeA-IoModule1-FEPort1 | | -- | -- | -- | | -- |
| <input type="checkbox"/> BaseEnclosure-NodeA-IoModule1-FEPort2 | | -- | -- | -- | | -- |

Options:

A- 1

B- 2

C- 4

D- 6

Answer:

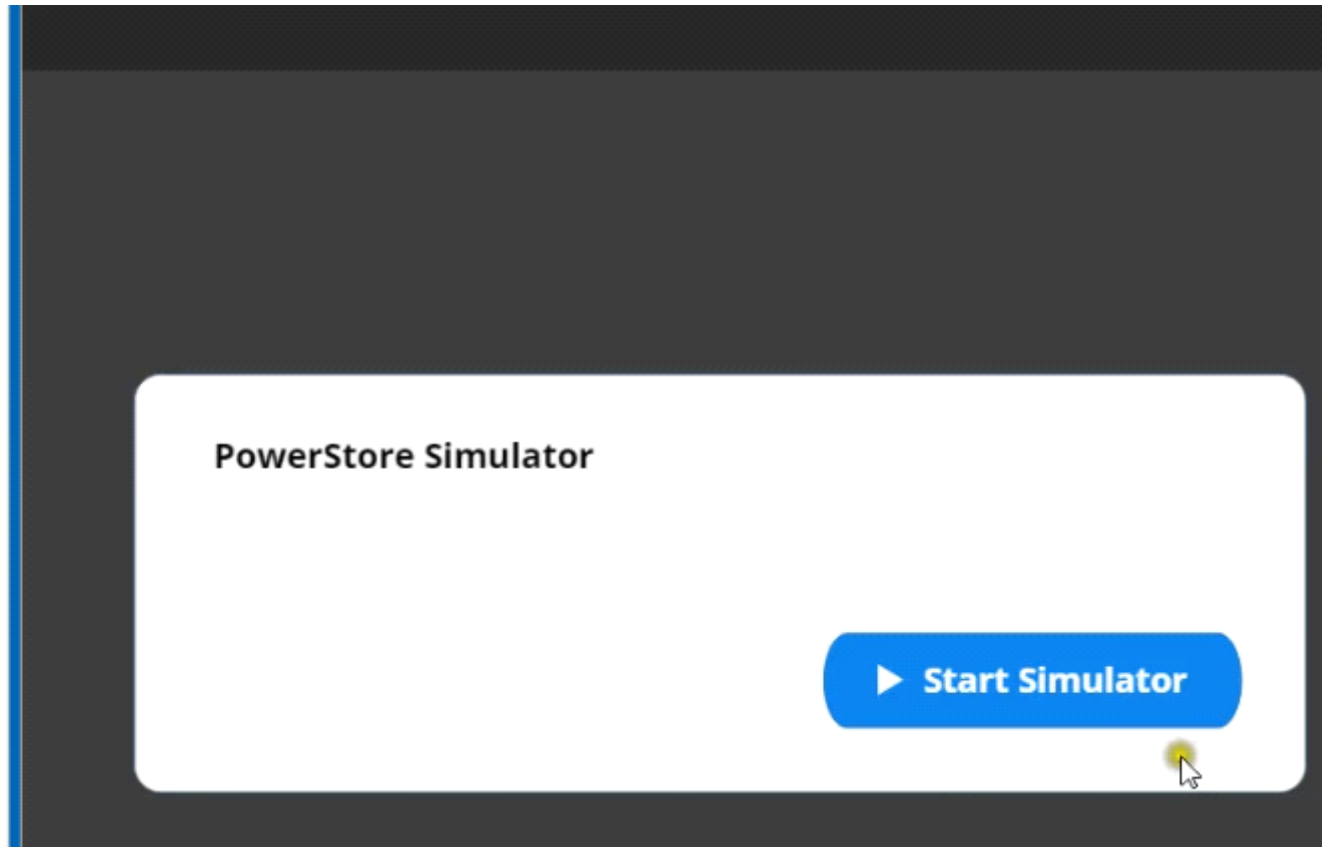
B

Question 3

Question Type: MultipleChoice

Use the simulator to generate and download logs from all appliances in the PowerStore cluster. When you have finished using the simulator, Click Next.

Use the simulator to generate and download logs from all appliances in the PowerStore cluster. When you have finished using the simulator, click **Next**.



Options:

A- Explanation:

Below are the exhibits solution for this simulation.

OVERVIEW

Appliances: 1
Alerts: 0 Critical, 0 Major, 0 Minor
Watching: 0



CAPACITY

Free: 6.1 TB
Physical: 6.1 TB

PERFORMANCE

Latency: 203 μs
IOPS: 0 kIOPS
Bandwidth: 1.1 MB/s

Cluster2

Block: 0 Volume Groups, 2 Volumes, 0 Hosts

File: 0 File Systems, 0 SMB Shares, 0 NFS Exports

Watchlist

Alerts

0 CRITICAL, 0 MAJOR, 0 MINOR, 0 INFO

There are no Critical alerts

OVERVIEW

Appliances: 1
Alerts: 0 Critical, 0 Major, 0 Minor
Watching: 0



CAPACITY

Free: 6.1 TB
Physical: 6.1 TB

PERFORMANCE

Latency: 203 μs
IOPS: 0 kIOPS
Bandwidth: 1.1 MB/s

Cluster2

Block: 0 Volume Groups, 2 Volumes, 0 Hosts

File: 0 File Systems, 0 SMB Shares, 0 NFS Exports

Alerts

0 CRITICAL, 0 MAJOR, 0 MINOR, 0 INFO

There are no Critical alerts

Watchlist

Settings

- Encryption
- Audit Logs
- CHAP
- SSH Management

Networking

- Cluster MTU
- Network IPs
- Infrastructure Services
- SMTP Server

Support

- SupportAssist
- Service Account
- Support Materials
- General Support
- Disable Support Notific

Users

- Users
- Email Notifications

Properties

Change the properties of the cluster.

Cluster Name

Cluster2

Global ID: PS40c3ad925ed4

CANCEL

APPLY

Settings

Cluster

- Properties
- Upgrades
- Licensing
- Power Down

Security

- Certificates
- Encryption
- Audit Logs
- CHAP
- SSH Management

Networking

- Cluster
- Network IPs
- Infrastructure Services
- SMTP Server

Support

Support Materials

Collect diagnostic information for appliances in your cluster to troubleshoot issues.

Details

Create a collection of support materials such as system logs, configuration details, and other diagnostic information. You can specify which object to collect data for. The completed support materials package is archived on your cluster and can be downloaded from the list below.

START COLLECTION

Support Materials Library

DOWNLOAD **SEND TO SUPPORT** **DELETE**

| Start Time | Status | Description | Size |
|------------|--------|-------------|------|
|------------|--------|-------------|------|

DELL EMC PowerStore Cluster2

Dashboard Monitoring Compute Storage

Settings

Cluster

- Properties
- Upgrades
- Licensing
- Power Down

Security

- Certificates
- Encryption
- Audit Logs
- CHAP
- SSH Management

Networking

- Cluster MTU
- Network IPs
- Infrastructure Services
- SMTP Server

Support

Support Materials

Collect diagnostic information for

Details

Create a collection of support ma information. You can specify whic archived on your cluster and can b

START COLLECTION

Support Materials Library

DOWNLOAD **SEND**

Start Time

Gather Support Materials

Description

To reduce the time needed and file size for the support materials, select the object you are investigating. For example, the volume that is not responding. The cluster will only gather support materials for the appliance that contains the object.

Note: You must use the vSphere Web Client to download log files from vCenter Server.

Object Type

Use this filter to find the object more easily. If the object is of a type not included in the filter, select Appliances and choose the appliance that contains the object.

Appliances

Volumes

Volume Groups

Virtual Volumes

CANCEL

START

DELL EMC PowerStore Cluster2

Dashboard Monitoring Compute Storage

Settings

Cluster

- Properties
- Upgrades
- Licensing
- Power Down

Security

- Certificates
- Encryption
- Audit Logs
- CHAP
- SSH Management

Networking

- Cluster MTU
- Network IPs
- Infrastructure Services
- SMTP Server

Support

Support Materials

Collect diagnostic information for

Details

Create a collection of support materials. You can specify which information. You can specify which information archived on your cluster and can be

START COLLECTION

Support Materials Library

DOWNLOAD **SEND**

Start Time

Gather Support Materials

Description

To reduce the time needed and file size for the support materials, select the object you are investigating. For example, the volume that is not responding. The cluster will only gather support materials for the appliance that contains the object.

Note: You must use the vSphere Web Client to download log files from vCenter Server.

Object Type

Use this filter to find the object more easily. If the object is of a type not included in the filter, select Appliances and choose the appliance that contains the object.

Objects to collect data for:

- Cluster2-appliance1

CANCEL **START**

Settings

Cluster

- Properties
- Upgrades
- Licensing
- Power Down

Security

- Certificates
- Encryption
- Audit Logs
- CHAP
- SSH Management

Networking

- Cluster MTU
- Network IPs
- Infrastructure Services
- SMTP Server

Support

Support Materials

Collect diagnostic information for appliances in your cluster to troubleshoot issues.

Details

Create a collection of support materials such as system logs, configuration details, and other diagnostic information. You can specify which object to collect data for. The completed support materials package is archived on your cluster and can be downloaded from the list below.

START COLLECTION

Support Materials Library

DOWNLOAD SEND TO SUPPORT DELETE

| | Start Time | Status | Description | Size |
|-------------------------------------|--------------------------|---------|-------------|--------|
| <input checked="" type="checkbox"/> | 21-Jan-2020 03:27 PM EST | SUCCESS | | 1.3 GB |

DELL EMC PowerStore Cluster2

Dashboard Monitoring Compute Storage

Settings

- Cluster**
 - Properties
 - Upgrades
 - Licensing
 - Power Down
- Security**
 - Certificates
 - Encryption
 - Audit Logs
 - CHAP
 - SSH Management
- Networking**
 - Cluster MTU
 - Network IPs
 - Infrastructure Services
 - SMTP Server
- Support**

Support Materials

Collect diagnostic information for

Details

Create a collection of support ma information. You can specify whic archived on your cluster and can b

START COLLECTION

Support Materials Library

DOWNLOAD **SEND**

Start Time

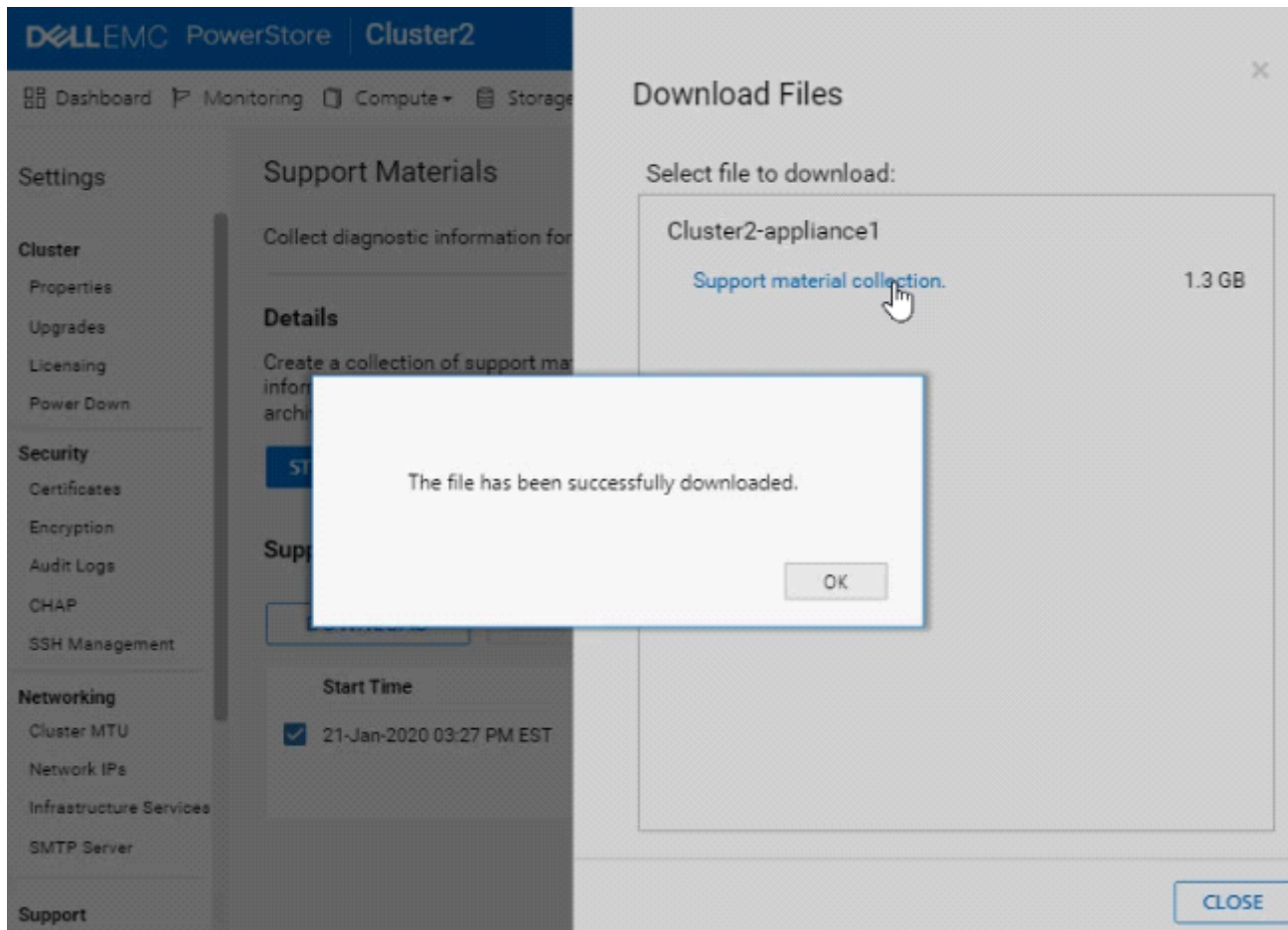
- 21-Jan-2020 03:27 PM EST

Download Files ×

Select file to download:

| | |
|--|--------|
| Cluster2-appliance1 | |
| Support material collection. | 1.3 GB |

CLOSE



Answer:

A

Question 4

Question Type: MultipleChoice

An administrator received the following alert from PowerStore regarding a previously created NAS server?

Description:

The SMB server of the NAS server PowerStore_NAS_01 is configured to be joined to the domain test.mid, but is currently not joined.

Which setting should the administrator change?

Options:

A- UDS

B- NIS

C- LDAP

D- NTP

Topic 2, Exam Part 2 -- Performance-based Questions

Part 2 of this exam contains 6 performance-based questions. You will need to run the PowerStore Test Simulator to correctly answer the questions. You invoke the simulator by clicking on one of the two buttons shown below. (Some questions use the Launch Simulator button; some questions use the Start Simulator button.)

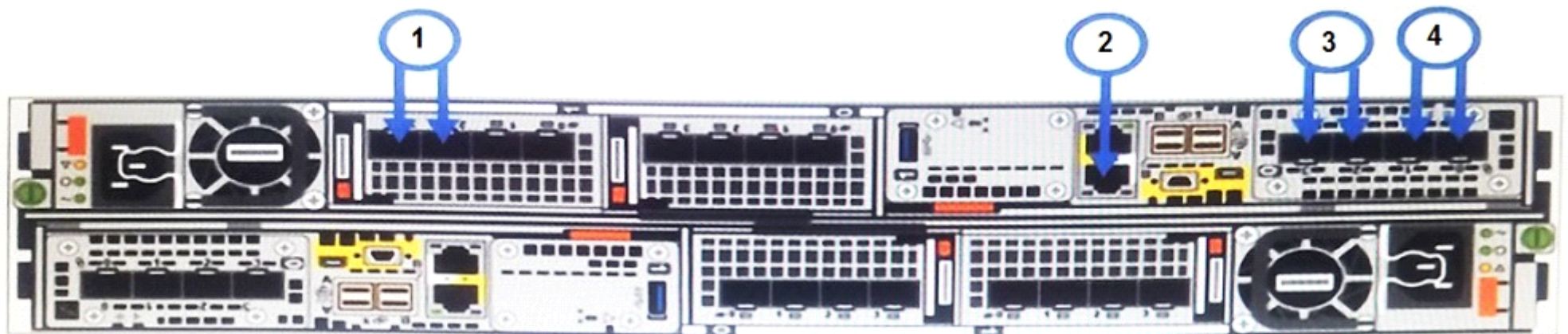
Answer:

D

Question 5

Question Type: MultipleChoice

Refer to the Exhibit.



Which port location in the graphic is used for network management connectivity on a PowerStore T?

Options:

A- 1

B- 2

C- 3

D- 4

Answer:

B

Question 6

Question Type: MultipleChoice

What is the significance of the warning given when a volume with data services is deleted?

Options:

A- Volume is mapped to a host

B- Volume is participating in a migration

C- Snapshot is present on the volume

D- Protection policy is configured on the volume

Answer:

C

Question 7

Question Type: MultipleChoice

Refer to the Exhibit.

```
 #(config) interface vlan 1501
 #(conf-if-vl-1501) interface ethernet 1/1/54
 #(conf-if-eth1/1/54) description Discovery_Laptop
 #(conf-if-eth1/1/54) switchport access vlan 1501
 #(conf-if-eth1/1/54) no shutdown
```

A Network administrator is failing to discover a PowerStore T system using the PowerStore Discovery Utility. What might be the issue?

Options:

- A- Discovery network uses only native VLAN
- B- Port 54 needs to be enabled
- C- Dedicated port needs to be used for discovery network
- D- Port 54 has not been set to trunk mode

Answer:

A

Question 8

Question Type: MultipleChoice

A customer wants to add capacity to their PowerStore 5000T. The system is populated with 6 NVMe SCM 750 GB drives. What is the maximum number and type of drives that can be added to the base enclosure?

Options:

- A- 15 NVMe SCM
- B- 15 NVMe SSD

C- 17 NVMe SCM

D- 17 NVMe SSD

Answer:

A

Question 9

Question Type: MultipleChoice

A PowerStore T administrator discovers that only one port on each node is active and passing traffic. The other port is healthy and online, but total bandwidth is only half of what the customer expects. Which action could resolve the issue?

Options:

A- Configure VLT and Link Aggregation Control Protocol

B- Implement VLT and Dynamic Link Aggregation Group

C- Configure Link Aggregation Control Protocol and Dynamic Link Aggregation Group

D- Implement Dynamic Link Aggregation Group

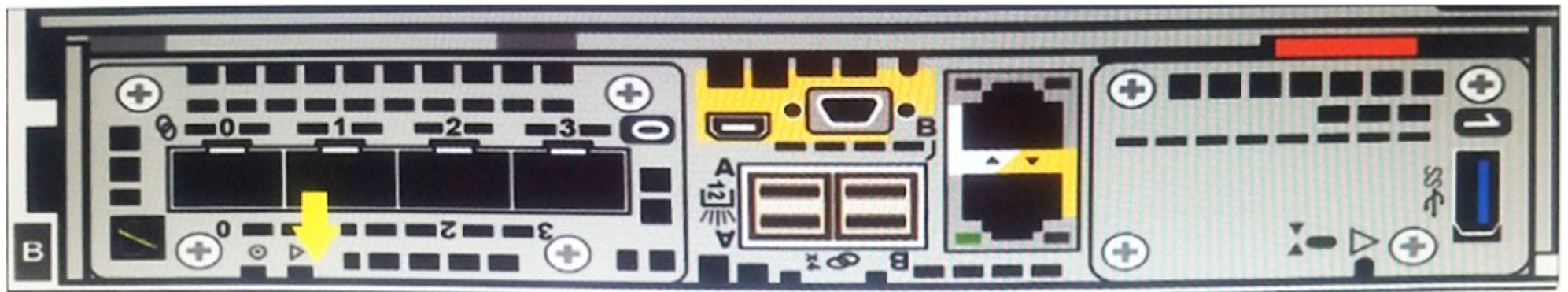
Answer:

A

Question 10

Question Type: MultipleChoice

Refer to the Exhibit.



Note the yellow arrow. A Data Center Engineer notices that the LED is blinking blue and amber alternating at one second intervals. What does this indicate?

Options:

- A- Node is Degraded
- B- System is booting
- C- Node in Service Mode
- D- System not initialized

Answer:

C

Question 11

Question Type: MultipleChoice

What describes the remote replication Failover operation?

Options:

- A- It is run automatically by the replication destination system in the event of a source system outage
- B- It is run from the replication destination system by the administrator in the event of a source system outage
- C- It is run automatically by the replication source system in the event of a source system outage

D- It is run from the replication source system by the administrator in the event of an outage on the system

Answer:

B

To Get Premium Files for DES-1221 Visit

<https://www.p2pexams.com/products/des-1221>

For More Free Questions Visit

<https://www.p2pexams.com/dell-emc/pdf/des-1221>

