



Free Questions for [GE0-803](#) by [dumpshq](#)

Shared by [Robbins](#) on [06-06-2022](#)

For More Free Questions and Preparation Resources

[Check the Links on Last Page](#)

Question 1

Question Type: MultipleChoice

Refer to the CTI Property tab in the Provisioning IVR profile section in the EMPS. The Default Route Number is used when _____.

Options:

- A-** IVR Server is unable to contact the Solution Control Interface (SCI)
- B-** IVR Server is unable to contact the Universal Routing Server (URS), or when the URS is unable to find an agent number to which it can route the call
- C-** IVR component, specifically Genesys Queue Adapter (GQA), cannot communicate with SCS.
- D-** IVR Server component cannot communicate with the Web Server

Answer:

B

Question 2

Question Type: MultipleChoice

Is it necessary to declare and configure IVR-TServer in CME when the IVR is in a Behind configuration? Choose the best statement.

Options:

- A-** It is not necessary to declare it in CME
- B-** It must be declared to configure the IVR Server options (gli_server_group_1, IServer et IServerGLMSap)
- C-** It must be declared because it is a part of IVR Server. But it have not to be configured

Answer:

B

Question 3

Question Type: MultipleChoice

In most deployment options, the IVR Server Client or Genesys Queue Adapater (GQA) resides on the _____.

Options:

- A- IP Communications Server
- B- Element Management Provisioning System
- C- Web Server
- D- Configuration Server

Answer:

A

Question 4

Question Type: MultipleChoice

Which of the following statements regarding log levels for GVP components is NOT correct?

Options:

- A- Log levels can be set via the EMPS.
- B- Log levels can be set through the VCS/IPCS Monitor (9810 Website)
- C- Log levels can be set through the IIS 5.0/6.0 Management Console.

D- VCS/IPCS Configuration through the GVP.ini file

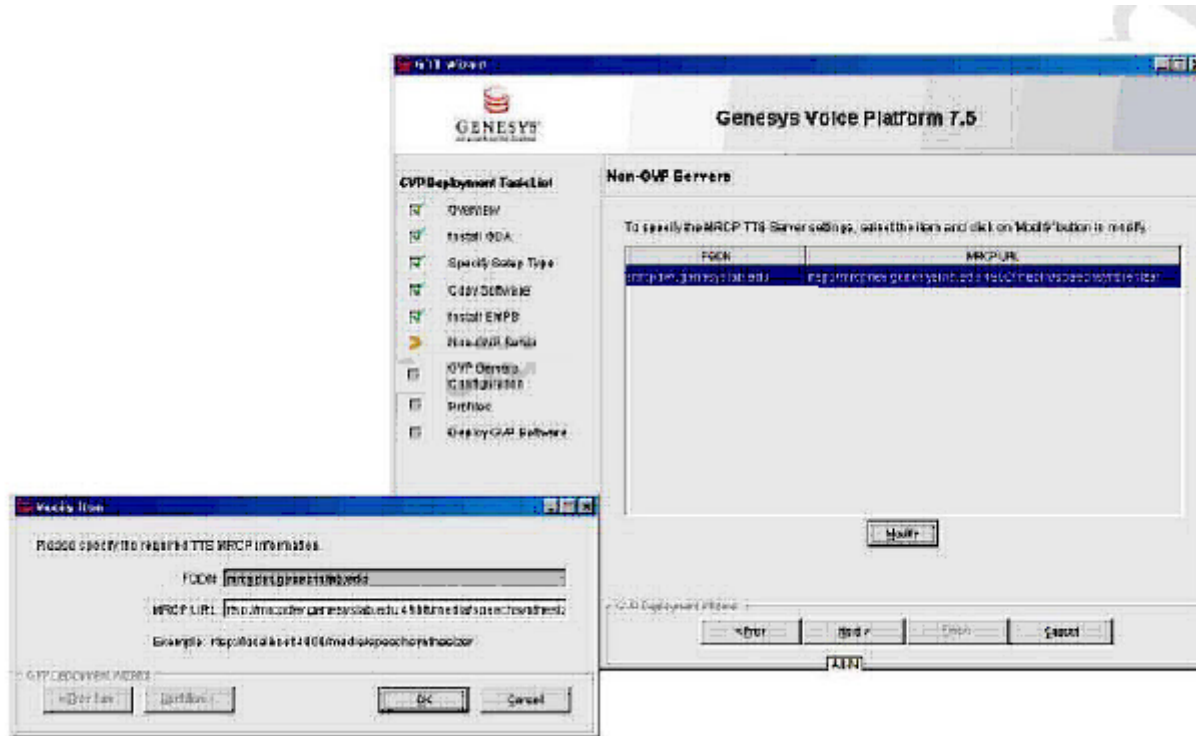
Answer:

B

Question 5

Question Type: MultipleChoice

Refer to the TTS: MRCP Configuration screen. Your GVP deployment requires Text to Speech (TTS) using MRCP. During GVP installation, you will be presented with this screen. What needs to be done?



Options:

- A-** The MRCP URL value, Localhost needs to be replaced with the fully qualified domain name (FQDN) of the MRCP server and then click Next to continue
- B-** Nothing, everything looks fine. Click Next to continue
- C-** Delete the MRCP URL and then click Next to continue
- D-** The installation has completed. Just click Cancel to end the installation

Answer:

A

Question 6

Question Type: MultipleChoice

What is the maximum size and number of files that can be locally cached using Cnlnet?

Options:

A- No limit and 8,192 files

B- No limit and 65,536 files

C- 1 GB and 16,384 files

D- 4 GB and 16,384 files

Answer:

D

Question 7

Question Type: MultipleChoice

The default directory where Code Tracer accesses the asp or jsp files from is _____.

Options:

- A- C:\inetpub\wwwroot
- B- C:\inetpub\wwwroot\Code Tracer
- C- C:\Program Files\GCTI\Voice Platform Studio\Code Tracer
- D- C:\Program Files\GCTI\Voice Platform Studio\TEMP

Answer:

D

Question 8

Question Type: MultipleChoice

IVR Server provides the ANI and DNIS to IVR Server Client in a _____.

Options:

A- In-Front configuration

B- Network configuration

C- Behind configuration

Answer:

C

Question 9

Question Type: MultipleChoice

Which of the following statements regarding the integration of GVP and Outbound Contact Server (OCS) is correct?

Options:

- A-** Outbound Contact integrated with GVP provides the ability for Outbound Contact Server (OCS) to trigger outbound calls, which are dialed using GVP, and to receive responses and results
- B-** Call Progress Detection (CPD) using an IP Communication Server (IPCS) requires Dialogic software, known as Host Media Processing (HMP)
- C-** GVP can be configured in either IVR-in-Front or IVR-Behind modes
- D-** All of the above
- E-** None of the above

Answer:

D

Question 10

Question Type: MultipleChoice

How are VoiceXML pages produced during a GVP call session?

Options:

- A- Web application server generates VoiceXML when processing asp or jsp pages
- B- VCS or IPCS produce VoiceXML when the call is initiated
- C- EMPS produces VoiceXML when the request comes in
- D- IPCS creates the VoiceXML when it relays SIP messages

Answer:

A

To Get Premium Files for GE0-803 Visit

<https://www.p2pexams.com/products/ge0-803>

For More Free Questions Visit

<https://www.p2pexams.com/genesys/pdf/ge0-803>

