



Free Questions for HPE6-A68 by dumpshq

Shared by Mccoy on 06-06-2022

For More Free Questions and Preparation Resources

Check the Links on Last Page

Question 1

Question Type: MultipleChoice

What does the Posture Token QUARANTINE imply?

Options:

- A- The client is compliant. However, there is an update available to remediate the client to HEALTHY state.
- B- The posture of the client is unknown.
- C- The client is infected and is a threat to other systems in the network.
- D- The client is out of compliance, but has HEALTHY state.
- E- The client is out of compliance.

Answer:

E

Question 2

Question Type: MultipleChoice

During a web login authentication, what is expected to happen as part of the Automated NAS login?

Options:

- A- NAD sends TACACS+ request to ClearPass.
- B- ClearPass sends TACACS+ request to NAD.
- C- Client device sends RADIUS request to NAD.
- D- NAD sends RADIUS request to ClearPass.
- E- ClearPass sends RADIUS request to NAD.

Answer:

D

Question 3

Question Type: MultipleChoice

Which statement is true about the configuration of a generic LDAP server as an External Authentication server in ClearPass? (Choose three.)

Options:

- A- Generic LDAP Browser can be used to search the Base DN.
- B- An administrator can customize the selection of attributes fetched from an LDAP server.
- C- The bind DN can be in the administrator@domain format.
- D- A maximum of one generic LDAP server can be configured in ClearPass.
- E- A LDAP Browser can be used to search the Base DN.

Answer:

A, B, E

Question 4

Question Type: MultipleChoice

Which is a valid policy simulation types in ClearPass? (Choose three.)

Options:

- A- Enforcement Policy
- B- Posture token derivation
- C- Role Mapping
- D- Endpoint Profiler
- E- Chained simulation

Answer:

A, C, E

Question 5

Question Type: MultipleChoice

Which statement is true about the databases in ClearPass?

Options:

- A- Entries in the guest user database do not expire.
- B- A Static host list can only contain a list of IP addresses.

- C-** Entries in the guest user database can be deleted.
- D-** Entries in the local user database cannot be modified.
- E-** The endpoints database can only be populated by manually adding MAC addresses to the table.

Answer:

A

Question 6

Question Type: MultipleChoice

A bank would like to deploy ClearPass Guest with web login authentication so that their customers can selfregister on the network to get network access when they have meetings with bank employees. However, they're concerned about security.

What is true? (Choose three.)

Options:

- A-** If HTTPS is used for the web login page, after authentication is completed guest Internet traffic will all be encrypted as well.
- B-** During web login authentication, if HTTPS is used for the web login page, guest credentials will be encrypted.

- C-** After authentication, an IPSEC VPN on the guest's client be used to encrypt Internet traffic.
- D-** HTTPS should never be used for Web Login Page authentication.
- E-** If HTTPS is used for the web login page, after authentication is completed some guest Internet traffic may be unencrypted.

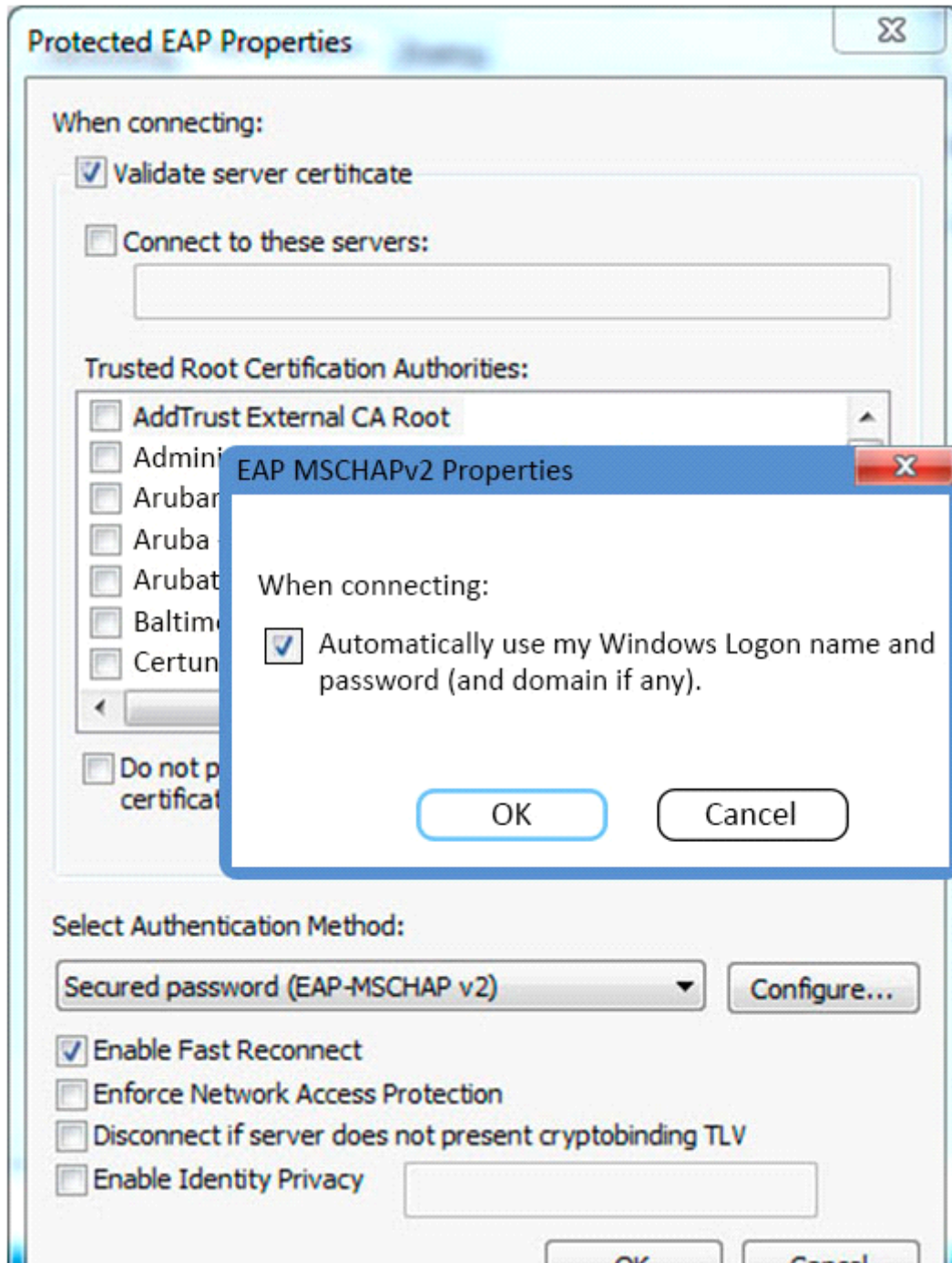
Answer:

B, C, E

Question 7

Question Type: MultipleChoice

Refer to the exhibit.



Based on the configuration of a Windows 802.1X supplicant shown, what will be the outcome when 'Automatically use my Windows logon name and password' are selected?

Options:

- A- The client will use machine authentication.
- B- The client's Windows login username and password will be sent inside a certificate to the Active Directory server.
- C- The client's Windows login username and password will be sent to the Authentication server.
- D- The client will need to re-authenticate every time they connect to the network.
- E- The client will prompt the user to enter the logon username and password.

Answer:

C

Question 8

Question Type: MultipleChoice

What is the purpose of ClearPass Onboard?

Options:

- A- to provide MAC authentication for devices that don't support 802.1x
- B- to run health checks on end user devices
- C- to provision personal devices to securely connect to the network
- D- to configure self-registration pages for guest users
- E- to provide guest access for visitors to connect to the network

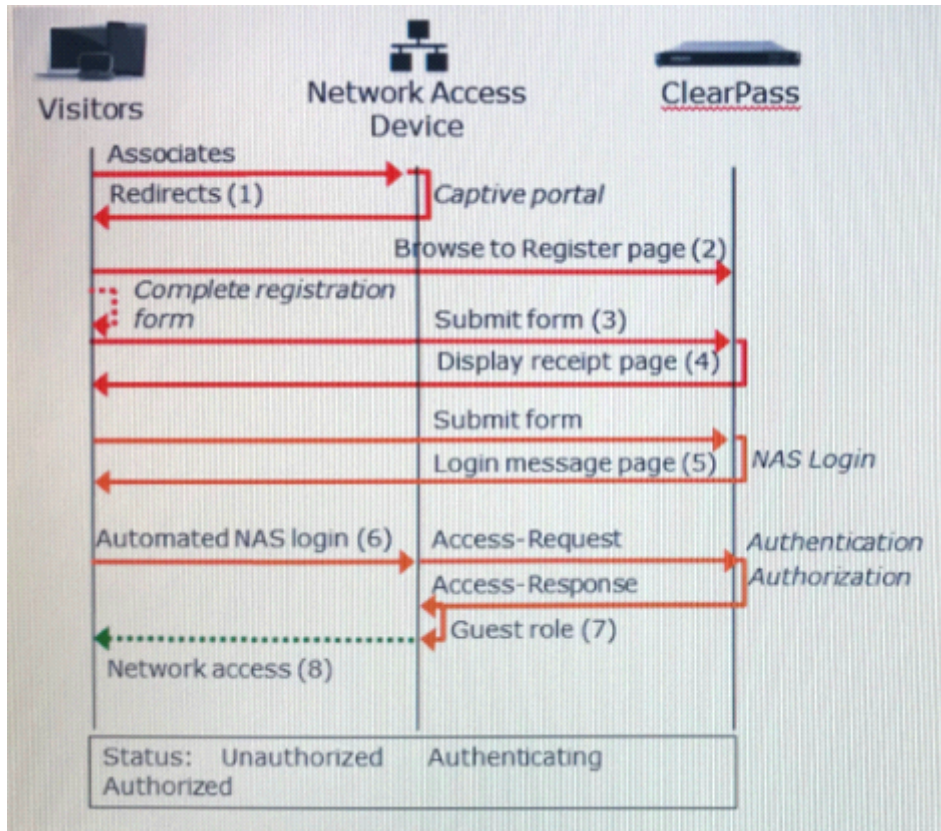
Answer:

C

Question 9

Question Type: MultipleChoice

Refer to the exhibit.



Based on the guest Self-Registration with Sponsor Approval workflow shown, at which stage does the sponsor approve the user's request?

Options:

A- After the RADIUS Access-Request

- B-** After the NAS login, but before the RADIUS Access-Request
- C-** Before the user can submit the registration form
- D-** After the RADIUS Access-Response
- E-** After the receipt page is displayed, before the NAS login

Answer:

E

Question 10

Question Type: MultipleChoice

Use this form to make changes to the RADIUS Web Login Guest Network.

Login Form
Options for specifying the behaviour and content of the login form.

Authentication:	Credentials - Require a username and password ▼ Select the authentication requirement. Access Code requires a single code (username) to be entered. Anonymous allows a blank form requiring just the terms or a Log In button. A pre-Access Code and Anonymous require the account to have the Username Authentici
Custom Form:	<input type="checkbox"/> Provide a custom login form If selected, you must supply your own HTML login form in the Header or Footer HT
Custom Labels:	<input type="checkbox"/> Override the default labels and error messages If selected, you will be able to alter labels and error messages for the current login
* Pre-Auth Check:	RADIUS – check using a RADIUS request ▼ Select how the username and password should be checked before proceeding to th
Terms:	<input type="checkbox"/> Require a Terms and Conditions confirmation If checked, the user will be forced to accept a Terms and Conditions checkbox.

A Web Login page is configured in Clear Pass Guest as shown.

What is the purpose of the Pre-Auth Check?

Options:

- A-** To authenticate users after the NAD sends an authentication request to ClerPass
- B-** To authenticate users before the client sends the credentials to the NAD
- C-** To authenticate users when they are roaming from one NAD to another
- D-** To authenticate users before they launch the Web Login Page

E- To replace the need for the NAD to send an authentication request to ClearPass

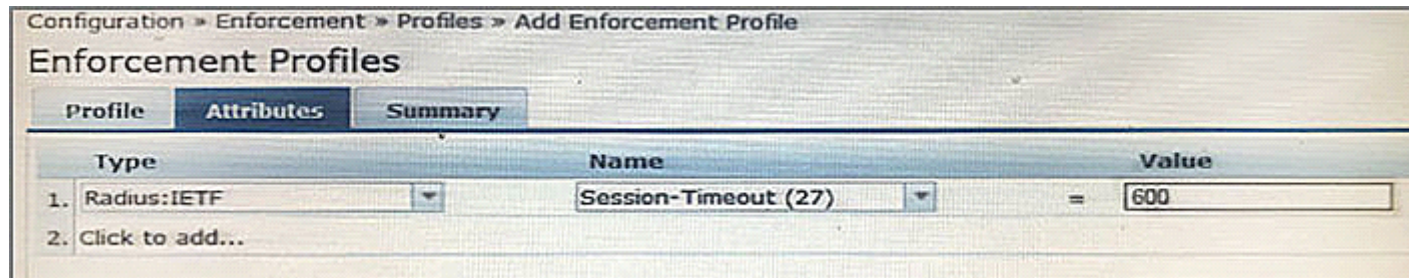
Answer:

B

Question 11

Question Type: MultipleChoice

Refer to the exhibit.



Configuration » Enforcement » Profiles » Add Enforcement Profile

Enforcement Profiles

Profile | **Attributes** | Summary

	Type	Name	Value
1.	Radius:IETF	Session-Timeout (27)	= 600
2.	Click to add...		

An Enforcement Profile has been created in the Policy Manager as shown.

Which action will ClearPass take based on the Enforcement Profile?

Options:

- A-** It will send the Session-Timeout attribute in the RADIUS Access-Request packet to the NAD and the NAD will end the user's session after 600 seconds.
- B-** It will send the Session-Timeout attribute in the RADIUS Access-Accept packet to the User and the user's session will be terminated after 600 seconds.
- C-** It will count down 600 seconds and send a RADIUS CoA message to the NAD to end the user's session after this time is up.
- D-** It will count down 600 seconds and send a RADIUS CoA message to the user to end the user's session after this time is up.
- E-** It will send the session --Timeout attribute in the RADIUS Access-Accept packet to the NAD and the NAD will end the user's session after 600 seconds.

Answer:

E

To Get Premium Files for HPE6-A68 Visit

<https://www.p2pexams.com/products/hpe6-a68>

For More Free Questions Visit

<https://www.p2pexams.com/hp/pdf/hpe6-a68>

