



Free Questions for H12-261 by [dumpsheet](#)

Shared by [Nash](#) on [06-06-2022](#)

For More Free Questions and Preparation Resources

[Check the Links on Last Page](#)

Question 1

Question Type: MultipleChoice

Which of the following technologies can be used to improve the MPLS BGP VPN reliability?

Options:

- A- VPN GR
- B- FRR for private IP routes between PEs and CEs
- C- VPN FRR
- D- CE dual-homing networking at the access layer

Answer:

A, C, D

Question 2

Question Type: MultipleChoice

Which of the following AS-paths can be matched by the AS-Path filter configured using the ip as-path-filter 1 permit ^12.*74\$ command?

Options:

- A- AS_Path (32 1274 23)
- B- AS_Path (125 328 74 23)
- C- AS_Path (123 621 743 2374)
- D- AS_Path (321 12 2374)

Answer:

C

Question 3

Question Type: MultipleChoice

To reduce the amount of OSPF data and routing information in some areas, OSPF has special area types. Which of the following statements regarding OSPF special areas is true?

Options:

- A- The ASBR-summary-LSA can be advertised to an NSSA
- B- The AS-external-LSA can be advertised to a stub area
- C- Any OSPF area can be configured as a special area
- D- A router in a special area cannot establish an OSPF neighbor relationship with a router in a common area

Answer:

C

Question 4

Question Type: MultipleChoice

In the aggregate ipv4-address {mask | mask-length} [as-set | attribute-policy route-policy-name1 | detail-suppressed | origin-policy route-policy-name2 | suppress-policy route-policy-name3] command, multiple parameters can be used to affect the BGP summarized route and summarization result. Which of the following statements regarding this command are true?

Options:

- A-** If the origin-policy parameter is specified, only the specific routes matching route-policy are summarized.
- B-** If the attribute-policy parameter is specified, attributes of the summary route can be modified.
- C-** If the suppress-policy parameter is specified, a summary route is generated. The if-match clause of the route-policy can be used to filter specific routes to be suppressed. The specific routes matching route-policy are still advertised to other BGP peers.
- D-** If the as-set parameter is specified, the AS_Path attribute of the summary route contains AS path information about all specific routes to prevent loops.

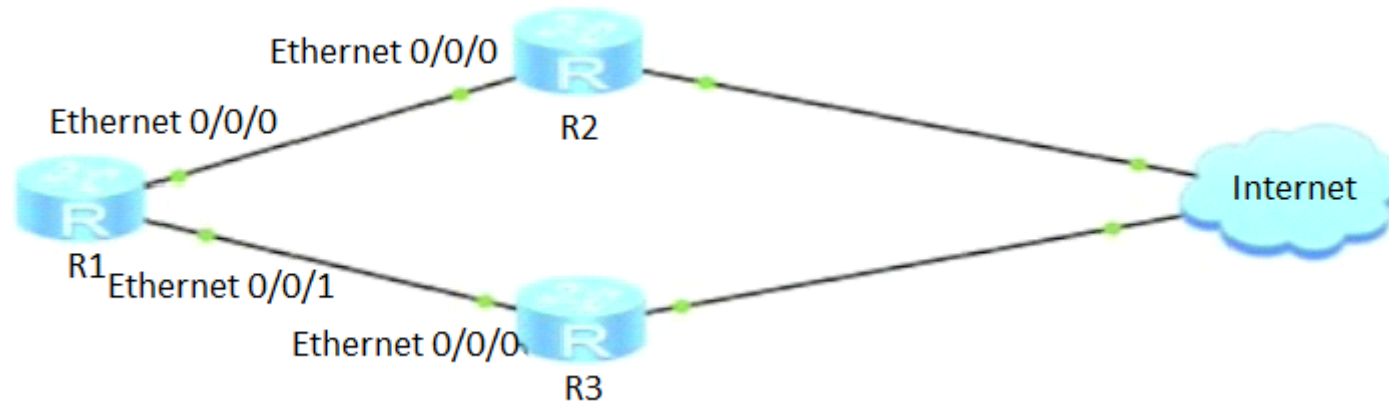
Answer:

A, B, D

Question 5

Question Type: MultipleChoice

As shown in the following figure, R1 can connect to the Internet through R2 or R3. EBGP connections are set up between R1 and R2 and between R1 and R3. R2 and R3 reside in the same AS and advertise default routes using BGP. Which of the following methods can be used to enable traffic from R1 to the Internet to be preferentially forwarded by R2?



Options:

- A- On R2, set the Local_Pref value to 150 in the egress direction of R1
- B- On R1, set the MED attribute value to 150 in the ingress direction of R3
- C- On R1, set the Local_Pref attribute value to 150 in the ingress direction of R2
- D- On R2, set the MED attribute value to 150 in the egress direction of R1

Answer:

C

Question 6

Question Type: MultipleChoice

A Huawei router is configured to import a route into OSPF on an enterprise network. Which of the following statements about the LSA generated from the imported route are true?

Options:

- A- The Net Mask field is set to all 0s
- B- The Link State ID, and Advertising Router fields can uniquely identify an LSA
- C- The Advertising Router field is set to the ASBR's Router ID
- D- The Link State ID field is set to the destination network segment address

Answer:

B

Question 7

Question Type: MultipleChoice

Which of the following statements regarding an OSPF virtual link is true?

Options:

- A-** A virtual link can be used to solve the problem of a non-continuous Area 0
- B-** A virtual link uses the IP address of the outbound interface as the link address
- C-** A virtual link can be established in any area, and the virtual link belongs to the area after it is established
- D-** A virtual link with a cost of 0 is the optimal link

Answer:

A

To Get Premium Files for H12-261 Visit

<https://www.p2pexams.com/products/h12-261>

For More Free Questions Visit

<https://www.p2pexams.com/huawei/pdf/h12-261>

