



**Free Questions for 4A0-108 by dumpssheet**

**Shared by Daniel on 12-12-2023**

**For More Free Questions and Preparation Resources**

**Check the Links on Last Page**

## Question 1

---

**Question Type:** MultipleChoice

---

An end station receiving a broadcast packet processes the data up to at least which layer of the OSI stack?

**Options:**

---

A- Layer 1

B- Layer 2

C- Layer 3

D- Layer 4

E- Layer 7

**Answer:**

---

C

## Question 2

---

**Question Type:** MultipleChoice

---

Which of the following are characteristics of the one-to-many model of multicast data delivery? (Choose two)

**Options:**

---

- A-** Receivers are generally unknown by the source.
- B-** Receivers are generally known by each other.
- C-** It is well suited for applications in which the receivers provide feedback to each other and the source.
- D-** There is a single data flow for each group on the source segment.
- E-** All devices are potentially capable of generating multicast data.
- F-** It is well suited for applications such as video on demand, where each source sends a separate data stream to each of the many different receivers.

**Answer:**

---

A, D

## Question 3

---

**Question Type:** MultipleChoice

---

Which MAC address does the IPv4 multicast address 239.33.42.107 translate to?

**Options:**

---

A- 01-00-5e-a1-2a-6b

B- 01-00-5e-21-2a-6b

C- 01-00-5e-21-2c-6c

D- 00-01-5e-a1-2a-6b

E- 00-01-5e-21-2a-6b

F- 00-01-5e-a1-2a-6b

**Answer:**

---

B

## Question 4

---

**Question Type: MultipleChoice**

---

Which of the following is NOT a benefit of multicast for delivering data to multiple receivers?

**Options:**

---

- A- Its data delivery is more efficient than unicast and broadcast.
- B- It is more scalable than unicast and broadcast.
- C- It suits VoD (Video on Demand) services very well.
- D- It suits BTV (Broadcast TV) services very well.

**Answer:**

---

C

## Question 5

---

**Question Type: MultipleChoice**

---

Which two protocols are used to signal P2MP LSPs?

**Options:**

---

- A- BGP A-D and RSVP-TE
- B- RSVP-TE and mLDP
- C- mLDP and PIM
- D- mLDP and BGP A-D

**Answer:**

---

B

## Question 6

---

**Question Type:** MultipleChoice

---

Which of the following is NOT a function of Intra-AS I-PMSI A-D route?

**Options:**

---

- A- To advertise the P-tunnel type to be used for the I-PMSI.
- B- To advertise the group address for the I-PMSI.
- C- To provide MVPN auto-discovery and binding within a single AS domain.

**D-** To advertise the customer multicast group address.

**Answer:**

---

D

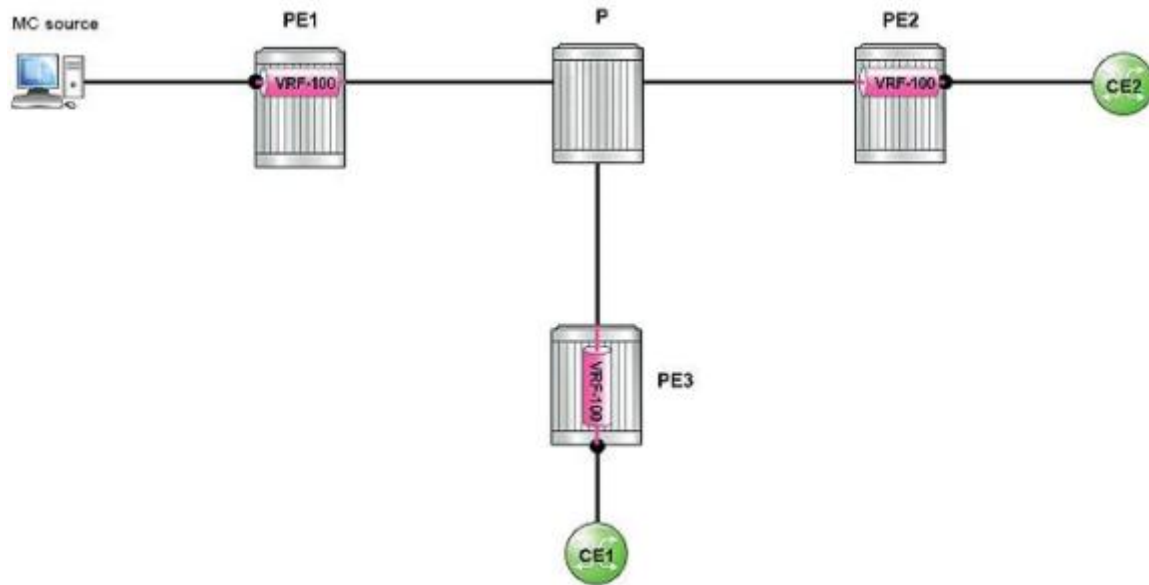
## **Question 7**

---

**Question Type: MultipleChoice**

---

Click the exhibit.



VPRN 100 is an MVPN with RSVP-TE P2MP LSP P-tunnels. How many PATH messages are signaled by PE1 for I-PMSI?

**Options:**

---

- A- 1
- B- 2
- C- 3
- D- It depends on the number of receivers

**Answer:**

---



B

## Question 8

---

**Question Type:** MultipleChoice

---

Four routers in a domain are configured as BSR candidates. Router A is configured with a BSR priority of 10; Router B is configured with a BSR priority of 100; Router C and Router D are at the default value. Router D has the highest IP address. Which router will be selected as the BSR?

### Options:

---

- A- Router A
- B- Router B
- C- Router C
- D- Router D

### Answer:

---

B

**To Get Premium Files for 4A0-108 Visit**

**<https://www.p2pexams.com/products/4a0-108>**

**For More Free Questions Visit**

**<https://www.p2pexams.com/nokia/pdf/4a0-108>**

