



Free Questions for 4A0-103 by ebraindumps

Shared by Giles on 29-01-2024

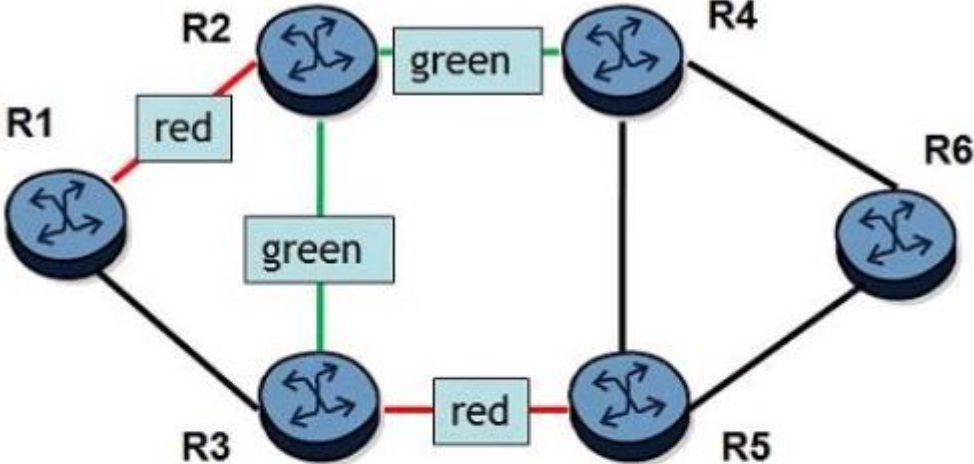
For More Free Questions and Preparation Resources

Check the Links on Last Page



Question 1

Question Type: MultipleChoice

Click on the exhibit.



Legend

-  SRLG "red"
-  SRLG "green"

An LSP's primary path takes R1-R3-R5-R6. Its fully loose secondary path is configured for SRLG. All links are of equal cost. Which path will the secondary path take?

Options:

- A- The secondary path will take R1-R3-R2-R4-R6.
- B- The secondary path will take R1-R2-R4-R6.
- C- The secondary path will take R1-R2-R3-R5-R6.
- D- The secondary path will take R1-R3-R2-R4-R5-R6.

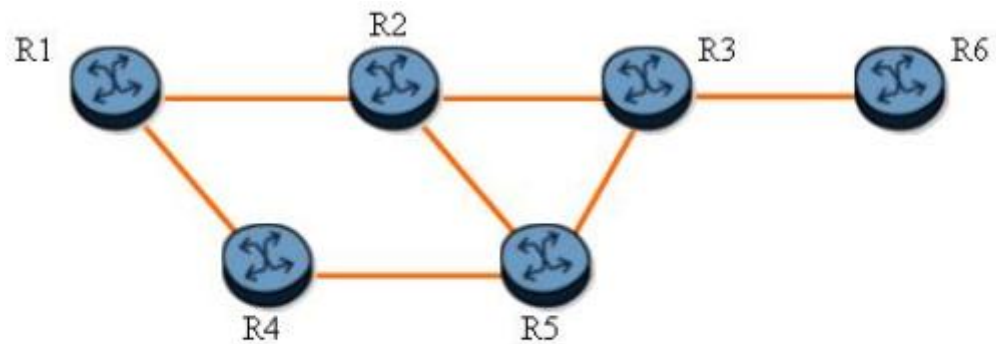
Answer:

A

Question 2

Question Type: MultipleChoice

Click on the exhibit.



Assume that the packet in the original LSP already has two labels.

An LSP traverses R1-R2-R3-R6 and one-to-one fast reroute is enabled. If the protected LSP transports two labels, and router R2 has failed, how many labels will be on the detour path?

Options:

- A- 1
- B- 2
- C- 3
- D- 4

Answer:

B

Question 3

Question Type: MultipleChoice

Which of the following about the use of RRO in fast reroute is FALSE?

Options:

- A- RRO is used to report the protection tunnel status to the head-end router.
- B- RRO contains the MP information that is required by a PLR for facility protection.
- C- RRO contains the label information that is expected by an MP for facility protection.
- D- RRO is used to inform downstream routers about the protection type requested.

Answer:

D

Question 4

Question Type: MultipleChoice

Which of the following about Fast Reroute node protection tunnels is FALSE?

Options:

- A-** Node protection tunnels detour around a failed next downstream router.
- B-** Node protection tunnels can only be requested for a primary LSP path.
- C-** Node protection tunnels are only used by one-to-one Fast Reroute.
- D-** Link protection tunnels are established if a router is unable to establish node protection tunnels.

Answer:

C

Question 5

Question Type: MultipleChoice

Click on the exhibit.

```

*#MPLS_R5# show router mpls lsp "toR8-5" path detail
=====
MPLS LSP toR8-5 Path (Detail)
=====
Legend :
  @ - Detour Available          # - Detour In Use
  b - Bandwidth Protected      n - Node Protected
  s - Soft Preemption
=====

LSP toR8-5 Path loose
-----
LSP Name       : toR8-5                Path LSP ID  : 27694
From           : 10.10.10.5            To           : 10.10.10.8
Adm State      : Up                    Oper State   : Down
Path Name      : loose                 Path Type    : Primary
Path Admin     : Up                    Path Oper    : Down
OutInterface   : n/a                   Out Label    : n/a
Path Up Time   : 0d 00:00:00           Path Dn Time : 0d 00:01:40
Retry Limit    : 0                     Retry Timer  : 30 sec
RetryAttempt   : 4                     NextRetryIn  : 21 sec
SetupPrioriti* : 7                     Hold Prioriti* : 0
Preference     : n/a                   Oper Bw      : 0 Mbps
Bandwidth      : No Reservation         Class Type   : 0
Hop Limit      : 255                   MainCT Retry: 0
Backup CT      : None                  Limit        :
MainCT Retry   : n/a                   Record Label: Record
Rem            :                       Neg MTU      : 0
Oper CT        : None                  Oper Metric  : 65535
Record Route   : Record                Exclude Grps :
Oper MTU       : 0                     None
Adaptive       : Enabled                CSPF Queries: 1
Include Grps   :                       Failure Node : 10.10.10.5
None
Path Trans     : 2
Failure Code    : looseHopsInFRRLsp
ExplicitHops    :
  No Hops Specified
Actual Hops     :
  No Hops Specified
ResigEligib*   : False
LastResignal    : n/a                  CSPF Metric  : 0
=====
* indicates that the corresponding row element may have been truncated.

```

LSP " to R8-5 " requests fast reroute protection. What could be done to remove the Failure Code shown?

Options:

- A-** The LSP must be enabled with CSPF on the head-end router.
- B-** Fast reroute must be enabled on the downstream routers.
- C-** A mixture of strict and loose hops must be defined in the primary path.
- D-** CSPF and fast reroute must be enabled on all downstream routers.

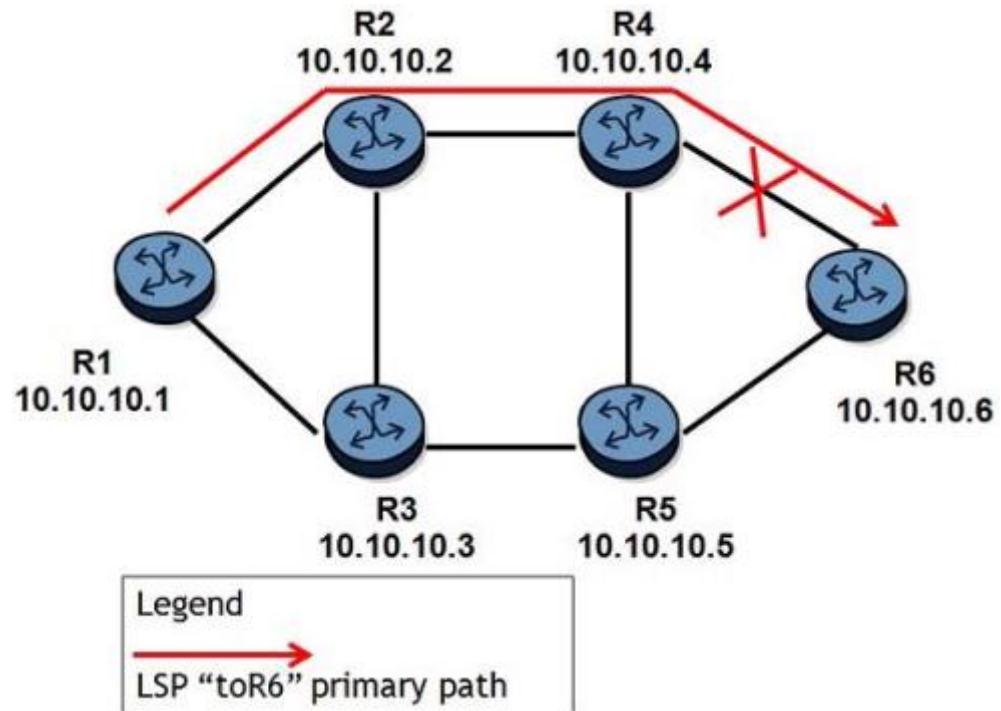
Answer:

A

Question 6

Question Type: MultipleChoice

Click on the exhibit.



An LSP path is established on router R1 toward router R6. If the link between routers R4 and R6 goes down, which of the following is the quickest way for service recovery?

Options:

- A- Router R1 updates its FIB after a new SPF calculation.
- B- Router R1 switches to a secondary path.

C- Router R4 switches to a FRR path.

D- Router R4 switches to a standby secondary path.

Answer:

C

Question 7

Question Type: MultipleChoice

Which of the following about an LSP protected with facility FRR is TRUE?

Options:

A- The LSP can use protection tunnels used by other LSPs.

B- The LSP can use facility and one-to-one FRR simultaneously.

C- The LSP is limited to link protection.

D- A detour protection tunnel is created for this LSP.

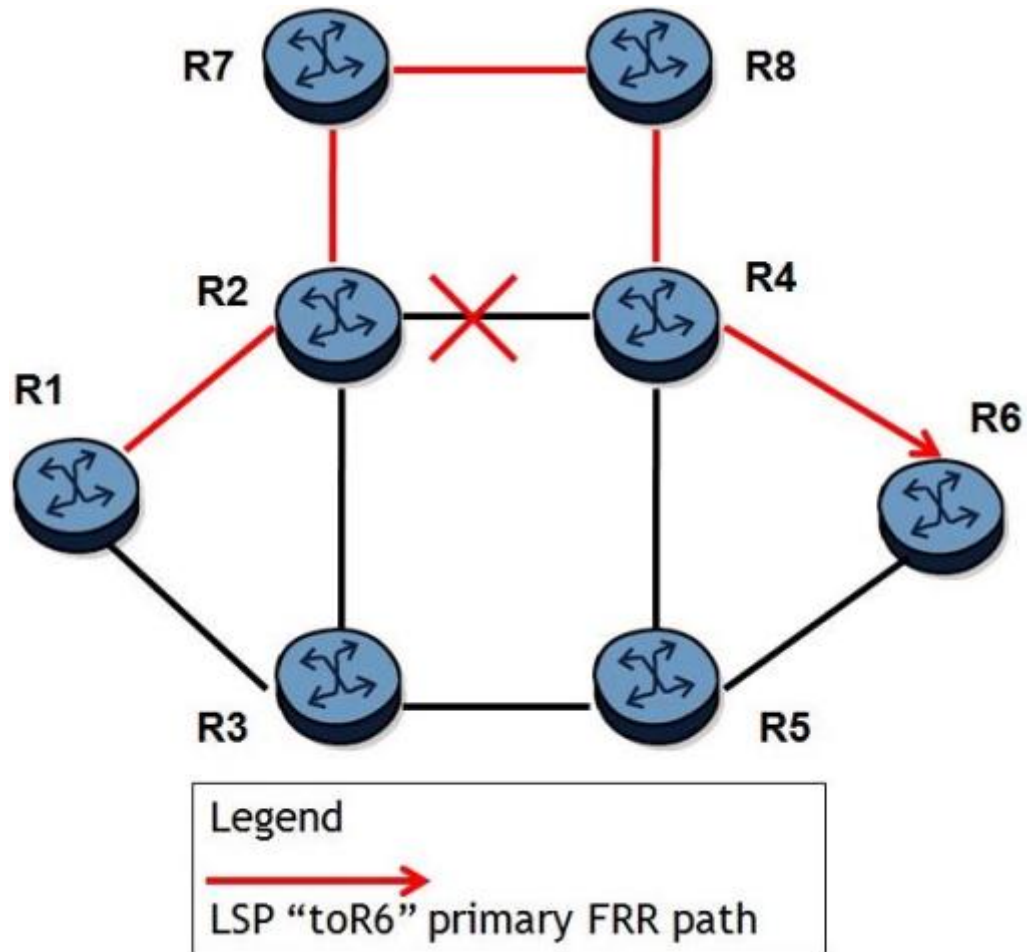
Answer:

A

Question 8

Question Type: MultipleChoice

Click on the exhibit.



A fully loose LSP MtoR6" is enabled with FRR protection. All links have the same cost. After the link between R2 and R4 goes down, FRR protection repairs the LSP and traffic traverses on R1-R2-R7-R8-R4-R6. By default, which of the following about this LSP on an Alcatel-Lucent 7750 SR is FALSE?

Options:

- A-** The LSP will switch to R1-R3-R5-R6 after the resignal timer expires.
- B-** The old primary path and its detours are torn down after the new primary path is established.
- C-** CSPF must be enabled to find a more optimal path.
- D-** The traffic is switched to R1-R3-R5-R6 in an MBB fashion.

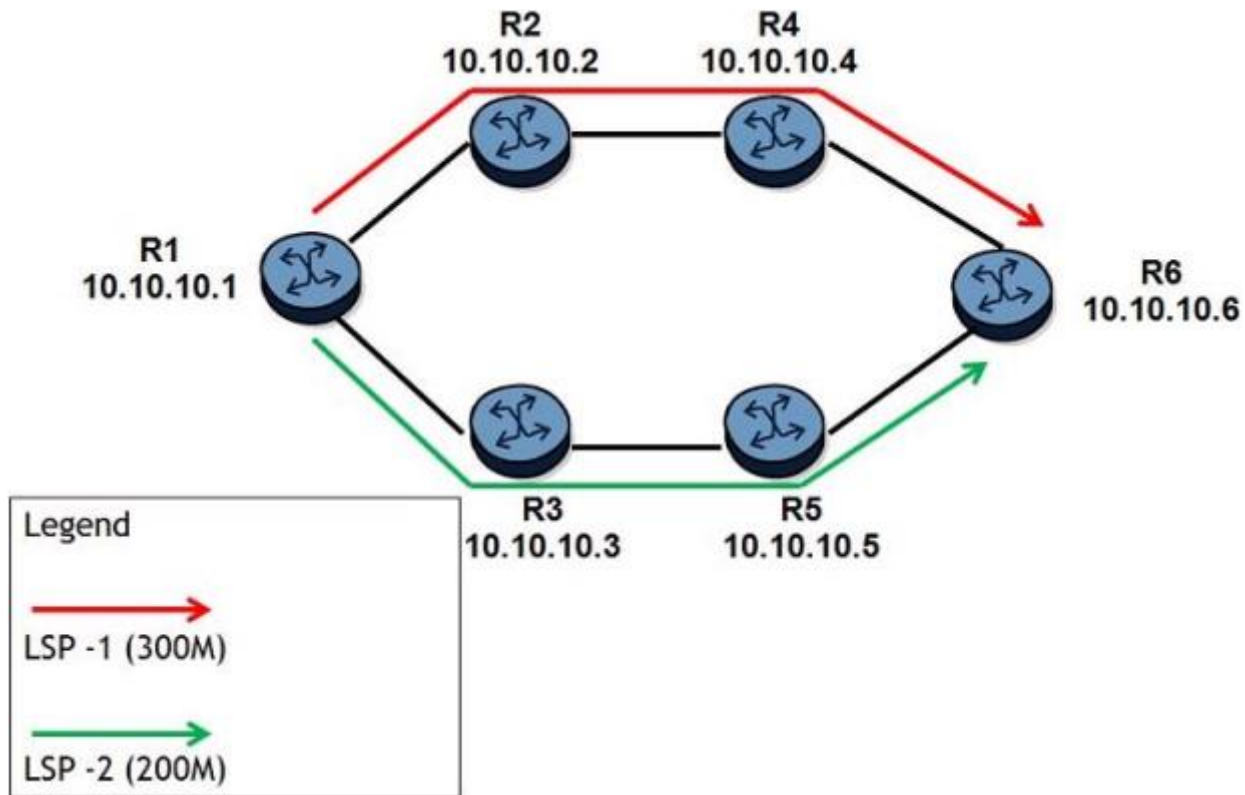
Answer:

A

Question 9

Question Type: MultipleChoice

Click on the exhibit.



All links have 1 Gbps unreserved bandwidth initially and all LSPs have the least-fill feature enabled. After the two LSPs have been signaled as shown, two additional LSPs are configured.

LSP-3 is signaled first with 50Mbps reserved. LSP-4 is signaled after with 400Mbps reserved.

Which paths will CSPF choose for LSP-3 and LSP-4?

Options:

- A- Both LSP-3 and LSP-4 take R1-R2-R4-R6.
- B- Both LSP-3 and LSP-4 take R1-R3-R5-R6.
- C- LSP-3 takes R1-R3-R5-R6 and LSP-4 takes R1-R2-R4-R6.
- D- LSP-3 takes R1-R2-R4-R6 and LSP-4 takes R1-R3-R5-R6.
- E- CSPF randomly chooses one of the equal cost paths for the two LSPs.

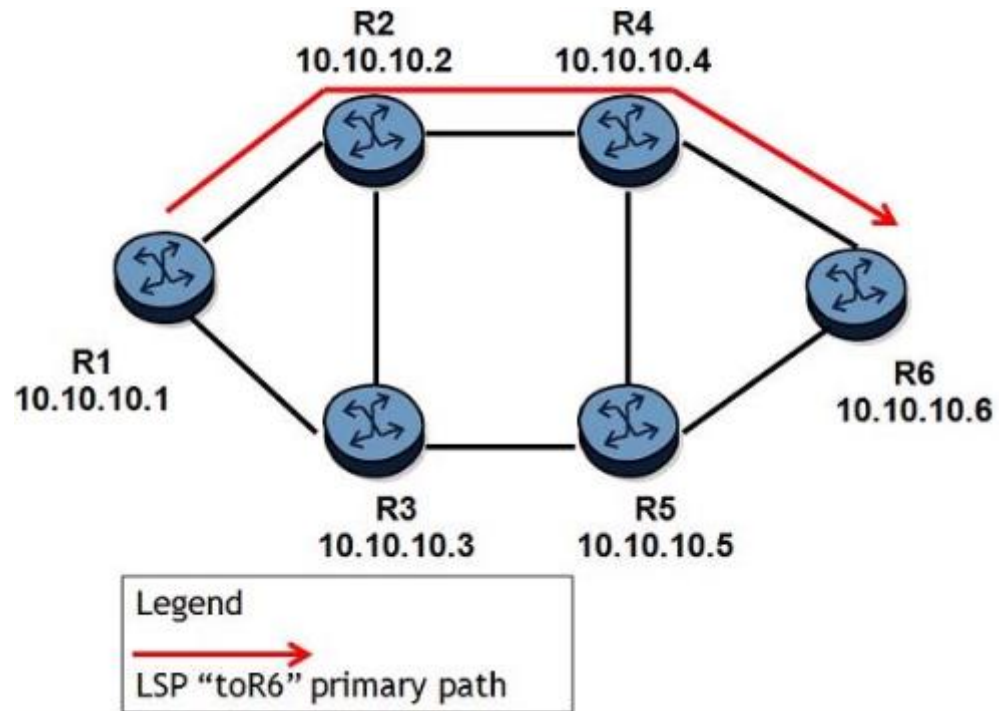
Answer:

B

Question 10

Question Type: MultipleChoice

Click on the exhibit.



Which of the following CANNOT be used to ensure the LSP toR6" will follow the path R1-R2-R4-R6?

Options:

- A- Admin groups
- B- Hop-limit
- C- Strict hops

D- TE-Metric

Answer:

B

Question 11

Question Type: MultipleChoice

An Alcatel-Lucent 7750 SR has its TE update threshold enabled with the up threshold set to 40%. The maximum reservable bandwidth on the link is 200M and 30M have already been reserved. When will a TE update be sent on this link?

Options:

- A- When the reserved bandwidth goes above 80M.
- B- When the reserved bandwidth goes above 40M.
- C- When an additional 80M bandwidth is reserved.
- D- When an additional 40M bandwidth is reserved.

Answer:

A

To Get Premium Files for 4A0-103 Visit

<https://www.p2pexams.com/products/4a0-103>

For More Free Questions Visit

<https://www.p2pexams.com/nokia/pdf/4a0-103>

