



**Free Questions for 4A0-108 by ebraindumps**

**Shared by Ayala on 15-04-2024**

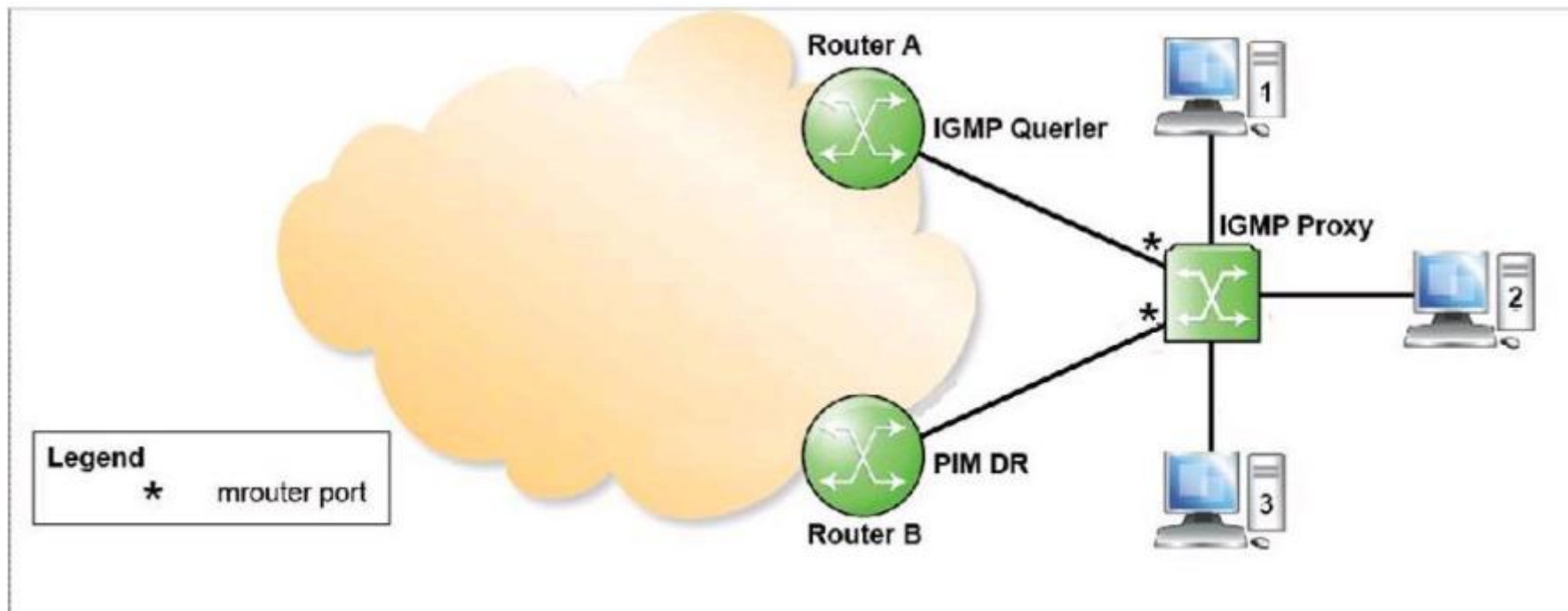
**For More Free Questions and Preparation Resources**

**Check the Links on Last Page**

# Question 1

Question Type: MultipleChoice

Click the exhibit.



What happens when Host 2 issues an IGMP report to join a group?

### Options:

---

- A- Both Router A and Router B get this IGMP report; Router B propagates a PIM join toward the core network.
- B- Both Router A and Router B get this IGMP report, and both propagate a PIM join toward the core network.
- C- Only Router A gets this IGMP report and propagates a PIM join toward the core network.
- D- Only Router A gets this IGMP report, but no further action is taken, as Router A is not the PIM DR.

### Answer:

---

A

## Question 2

---

**Question Type:** MultipleChoice

---

Click the exhibit.

```
A:RouterA# show router pim rp
PIM RP Set
=====
Group Address      RP Address      Type      Priority Holdtime Expiry Time
-----
224.0.0.0/4        10.10.10.24    Dynamic 5        150        0d 00:01:49
239.0.0.0/8        10.10.10.66    Static 1        N/A        N/A
-----
Group Prefixes : 2
```

Which router is the RP for group 239.1.34.92?

**Options:**

---

- A- 10.10.10.24.
- B- 10.10.10.66.
- C- It depends on the setting of the override parameter.
- D- Neither, since the overlapping address range presents a conflict.

**Answer:**

---

C

## Question 3

---

**Question Type:** MultipleChoice

---

Which of the following best describes the impact of an RP failure in a PIM ASM network?

### Options:

---

- A-** All existing multicast traffic is stopped immediately, as the PIM ASM network must have an RP to transmit the multicast traffic.
- B-** The multicast traffic will be impacted, but not immediately, as multicast routers will not discover the RP failure until the keep alive timer expires.
- C-** No impact at all, as an RP is not required in a PIM ASM network.
- D-** The traffic is not impacted if the multicast traffic flows have already been established, and the traffic flow does not involve the RP in the path.

### Answer:

---

D

## Question 4

---

**Question Type:** MultipleChoice

---

Which of the following is NOT a benefit of anycast RP?

**Options:**

---

- A- It provides RP redundancy in a PIM SM network.
- B- It provides load balancing between multiple RPs in the network,
- C- It supports a different multicast topology than the unicast topology.
- D- It supports more optimal routing of the Shared Path Tree by allowing redundant RPs to be located closer to receivers.

**Answer:**

---

C

## Question 5

---

**Question Type: MultipleChoice**

---

What is the first action a router performs when it receives a multicast packet?

**Options:**

---

- A- It determines if it is the DR for that segment.
- B- It checks the PIM source group database for the matching group.
- C- It sends a PIM Assert message to the RP.
- D- It performs an RPF check on the packet.
- E- It sends an IGMP join to the source.

**Answer:**

---

D

## Question 6

---

**Question Type: MultipleChoice**

---

What are the first two actions a router performs after PIM is enabled?

**Options:**

---

- A- BSR election followed by DR election.
- B- DR election followed by PIM Hello messages.
- C- DR election followed by BSR election.
- D- BSR election followed by PIM Hello messages.
- E- PIM Hello messages followed by BSR election.
- F- PIM Hello messages followed by DR election.

**Answer:**

---

F

## Question 7

---

**Question Type: MultipleChoice**

---

After the switchover from Shared Path Tree to Source Path Tree, does a branch of the Shared Path Tree still exist between the diverging router (router where the Shared and Source Path Tree diverge) and the RP?

**Options:**

---



- A- Yes, it exists until the source stops sending multicast traffic.
- B- Yes, it exists until there is no receiver beyond the diverging router.
- C- No. After switchover, only the Source Path Tree remains.
- D- No. After switchover, only the Shared Path Tree remains between the source and RP.

**Answer:**

---

B

## Question 8

---

**Question Type:** MultipleChoice

---

When forwarding a multicast frame, normal behavior for a LAN switch (with IGMP snooping enabled) is to forward the frame as if it were:

**Options:**

---

- A- A unicast frame with a known destination in the forwarding table.
- B- A unicast frame with an unknown destination in the forwarding table.
- C- A unicast frame with a known source in the forwarding table,

**D-** A unicast frame with an unknown source in the forwarding table.

**Answer:**

---

A

## Question 9

---

**Question Type:** MultipleChoice

---

Which entity periodically sends IGMP Host Membership Queries?

**Options:**

---

- A-** The router elected as Querier on a LAN.
- B-** The first host to expire its local suppression timer.
- C-** Only the multicast-enabled hosts on a LAN.
- D-** All routers on a LAN.
- E-** All multicast-enabled routers on a LAN.

**Answer:**

---

A

## Question 10

---

**Question Type:** MultipleChoice

---

Which of the following about data delivery is FALSE?

**Options:**

---

- A-** For multicast delivery, the source sends a single copy of each packet regardless of the number of receivers.
- B-** For unicast delivery, the source sends a single copy of each packet regardless of the number of receivers.
- C-** For broadcast delivery, the source sends a single copy of each packet regardless of the number of receivers.
- D-** For anycast delivery, the source sends a single copy of each packet regardless of the number of receivers.

**Answer:**

---

B

## Question 11

---

**Question Type:** MultipleChoice

---

Which of the following is NOT a characteristic of multicast?

### Options:

---

- A- Multicast relies on an existing IP routing infrastructure.
- B- Multicast traffic may follow a different path than unicast traffic between the same two points.
- C- A distinct multicast topology can be created instead of using the unicast topology.
- D- When PIM is used, the unicast routing topology has no impact on the multicast topology.

### Answer:

---

D

## Question 12

---

**Question Type:** MultipleChoice

---

Which of the following about the signaling of multicast group information in an MVPN service is TRUE when MPLS P2MP tunnels are used?

**Options:**

---

- A-** BGP Auto-Discovery is used for the signaling of the PMSIs, while either mLDP or RSVP-TE P2MP is used for the signaling of customer multicast group membership.
- B-** Either BGP Auto-Discovery or PIM is used for the signaling of the PMSIs, while either mLDP or RSVP-TE P2MP is used for the signaling of customer multicast group membership.
- C-** BGP Auto-Discovery is used for the signaling of the PMSIs, as well as for the signaling of customer multicast group membership.
- D-** BGP Auto-Discovery is used for the signaling of the PMSIs, while either BGP Auto-Discovery or PIM is used for the signaling of customer multicast group membership.

**Answer:**

---

C

**To Get Premium Files for 4A0-108 Visit**

**<https://www.p2pexams.com/products/4a0-108>**

**For More Free Questions Visit**

**<https://www.p2pexams.com/nokia/pdf/4a0-108>**

