



Free Questions for 4A0-C04 by ebraindumps

Shared by Horton on 15-04-2024

For More Free Questions and Preparation Resources

Check the Links on Last Page

Question 1

Question Type: MultipleChoice

Which of the following commands would correctly configure the confederation AS number as 65200 with a member AS of 65202?

Options:

- A- config>router- confederation 65200 members 65202
- B- config>router>bgp= confederation 65200 members 65202
- C- config>router= confederation 65202 members 65200
- D- config>router>bgp= confederation 65202 members 65200

Answer:

A

Question 2

Question Type: MultipleChoice

Which of the following prefix-lists is the most specific match for prefix 172.31.2.1/24?

Options:

- A- Prefix 172.16.0.0/12 longer.
- B- Prefix 172.31.0.0/22 longer.
- C- Prefix 172.31.0.0/23 longer.
- D- Prefix 172.31.0.0/24 exact.

Answer:

B

Question 3

Question Type: MultipleChoice

How are policy direction and data flow related on the Nokia 7750 SR?

Options:

- A- Import policies affect ingress data flow.
- B- Export policies affect ingress data flow.
- C- Both import and export policies affect ingress data flow.
- D- Policy direction and data flow are independent.

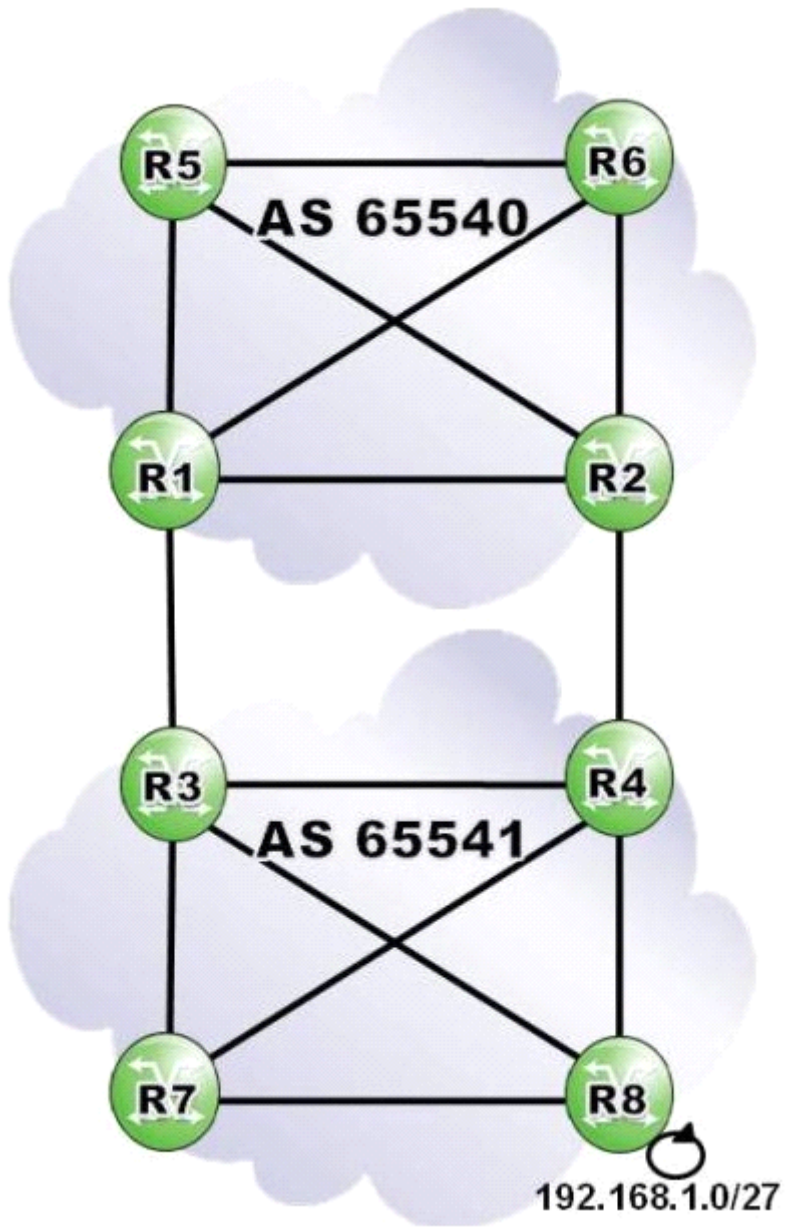
Answer:

B

Question 4

Question Type: MultipleChoice

Click the exhibit.



Router R2 receives a route to 192.168.1.0/27 from router R4, and sets the local preference to 110. Router R1 receives a route to 192.168.1.0/27 from router R3, and sets the local preference to 80. Both ASs have a full iBGP mesh. What path does traffic destined to 192.168.1.0/27 take from router R1?

Options:

A- R1-R3-R8

B- R1-R2-R4-R8

C- R1-R3-R4-R8

D- R1-R2-R4-R3-R8

Answer:

B

Question 5

Question Type: MultipleChoice

Assuming that "client1" and "client2" are directly-connected networks, what is the result of executing the following BGP export policy?

```
entry 10
  from
    protocol direct
  exit
  action accept
    community add "North"
  exit
exit
entry 20
  from
    prefix-list "client1"
  exit
  action accept
    community add "West"
  exit
exit
entry 30
  from
    prefix-list "client2"
  exit
  action accept
    community add "East"
  exit
exit
default-action reject
```

Options:

- A- 'client1' routes will be tagged with communities 'North' and 'West'.
- B- 'client1' routes will be tagged with community 'West'.
- C- 'client1' routes will be tagged with community 'North'.
- D- 'client1' routes will be rejected.

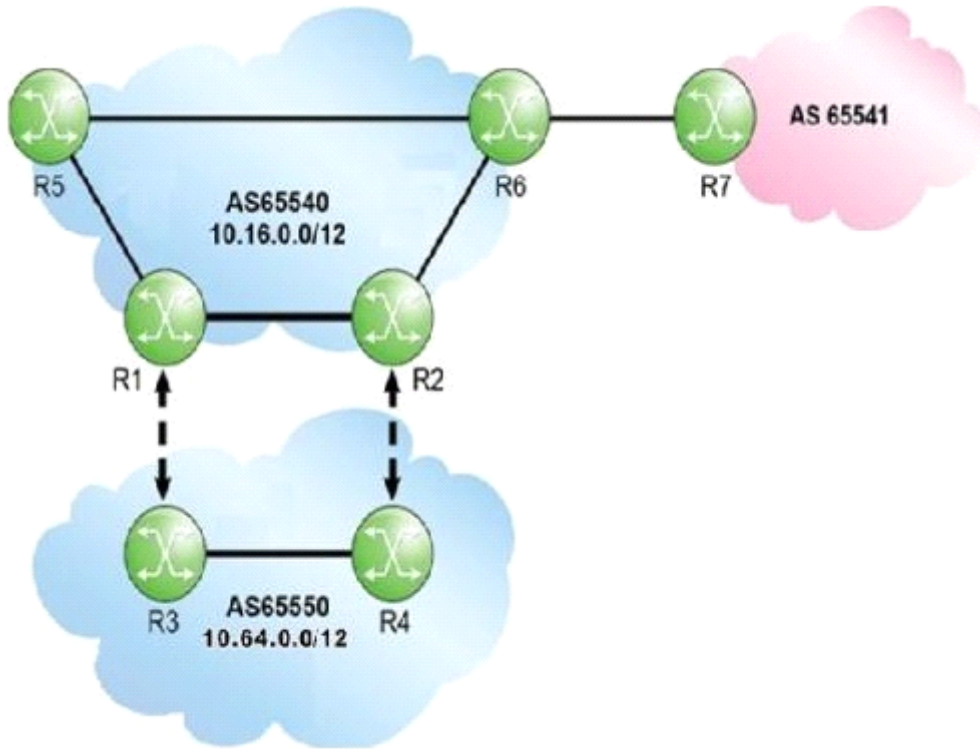
Answer:

C

Question 6

Question Type: MultipleChoice

Click the exhibit.



AS 65550 owns CIDR block 10.64.0.0/12. Router R6 advertises the aggregate 10.64.0.0/12 to AS 65541 with "as-set" enabled. Which of the following is TRUE regarding the aggregate route received by router R7?

Options:

- A-** The AS Path is set to 65540, and the Atomic Aggregate flag is set.
- B-** The AS Path is set to 65540 65550, and the Atomic Aggregate flag is set.

C- The AS Path is set to 65540 65550, and the Atomic Aggregate flag is not set.

D- The AS Path is set to 65550, and the Atomic Aggregate flag is not set.

Answer:

C

Question 7

Question Type: MultipleChoice

Which of the following is NOT a goal of BGP routing policies?

Options:

A- To protect external networks from instability.

B- To communicate the architecture of an AS to external ASs.

C- To protect the local AS and other external ASs from bad NLRI.

D- To optimize ingress and egress traffic patterns to best serve the users of the AS.

Answer:

B

Question 8

Question Type: MultipleChoice

Which of the following concerning OSPFv3 is TRUE?

Options:

- A- OSPFv3 uses MD5 Authentication.
- B- Router LSAs carry IPv6 prefix information.
- C- NSSA is supported in OSPFv3.
- D- OSPFv3 uses a 64-bit router ID.

Answer:

C

Question 9

Question Type: MultipleChoice

Which type of OSPF LSA has the following characteristics: It is flooded only within the area it originates from and can be originated by any OSPF router within the area (including non-DR routers).

Options:

- A- Type 1 Router LSA
- B- Type 2 Network LSA
- C- Type 3 Summary LSA
- D- Type 4 ASBR LSA

Answer:

A

To Get Premium Files for 4A0-C04 Visit

<https://www.p2pexams.com/products/4a0-c04>

For More Free Questions Visit

<https://www.p2pexams.com/nokia/pdf/4a0-c04>

