



**Free Questions for AD01 by ebraindumps**

**Shared by Brennan on 20-10-2022**

**For More Free Questions and Preparation Resources**

**Check the Links on Last Page**

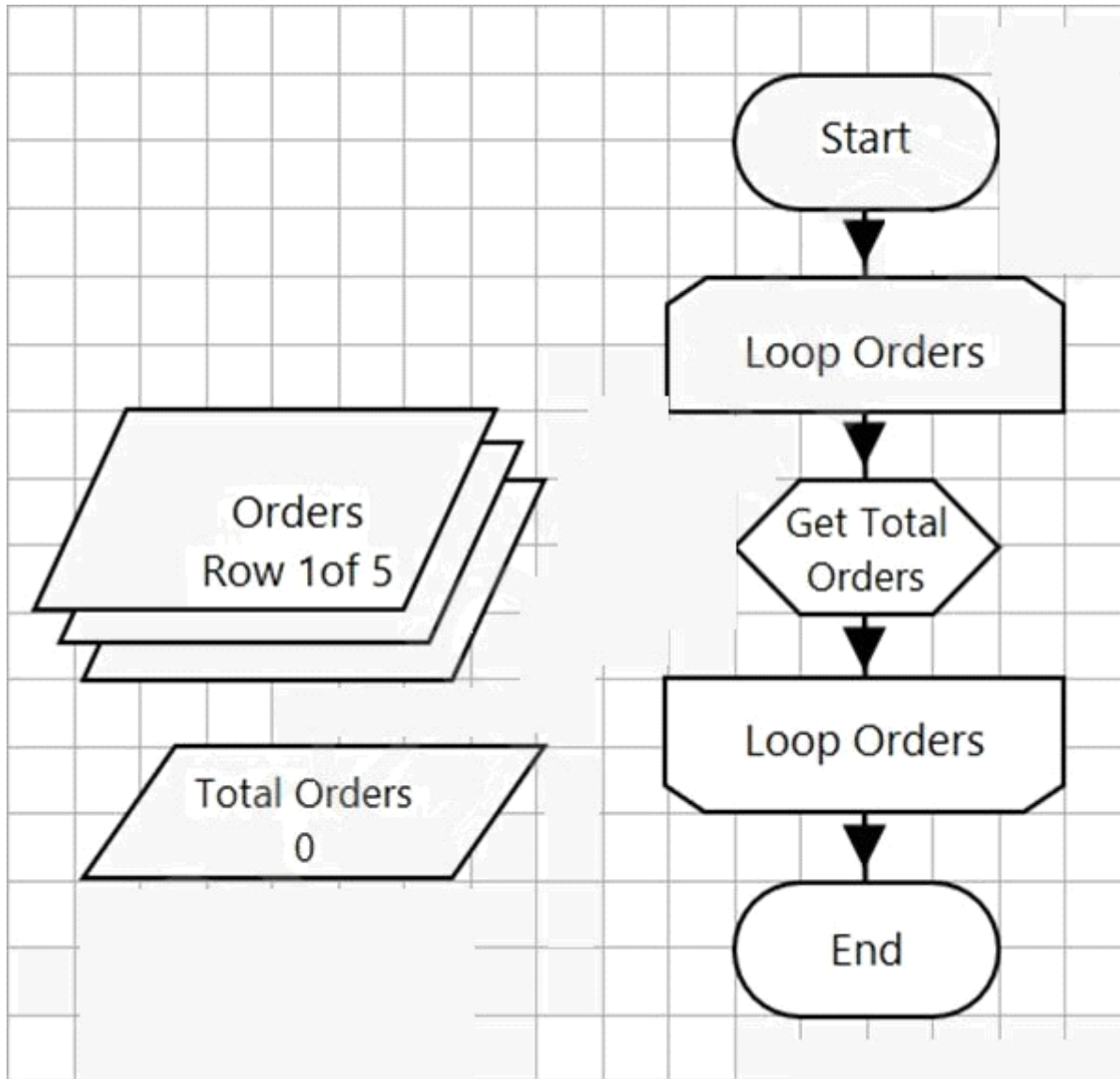
# Question 1

---

**Question Type: MultipleChoice**

---

Examine the following Process flow, which calculates the total number of orders:



The 'Orders' Collection contains the following data:

Fields	Initial Values	Current Values
Reference (Text)		Quantity (Number)
90001		10
90002		15
90003		2
90004		6
90005		11

The 'Loop Orders' loop is configured to loop through the 'Orders' Collection.

The 'Total Orders' data item is configured as a number data item with an initial value of 0.

The 'Get Total Orders' Calculation stage contains the following expression:

Calculation Properties

Name:

Description:

Expression

$[Orders.Quantity] + [Total Orders]$

Total Orders

What will the Total Orders data item value be after the page has executed?

**Options:**

---

- A- 0
- B- 11
- C- 10
- D- 44

**Answer:**

---

D

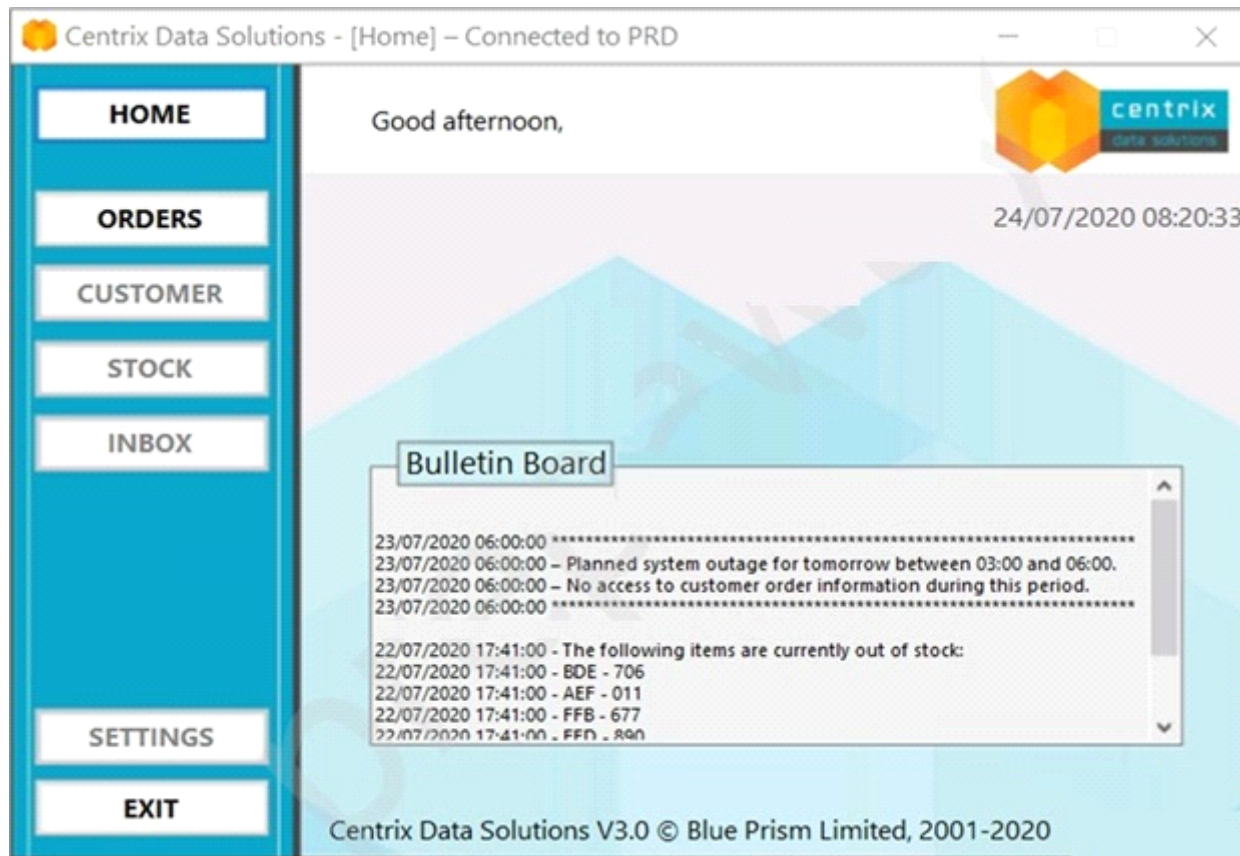
## **Question 2**

---

**Question Type: MultipleChoice**

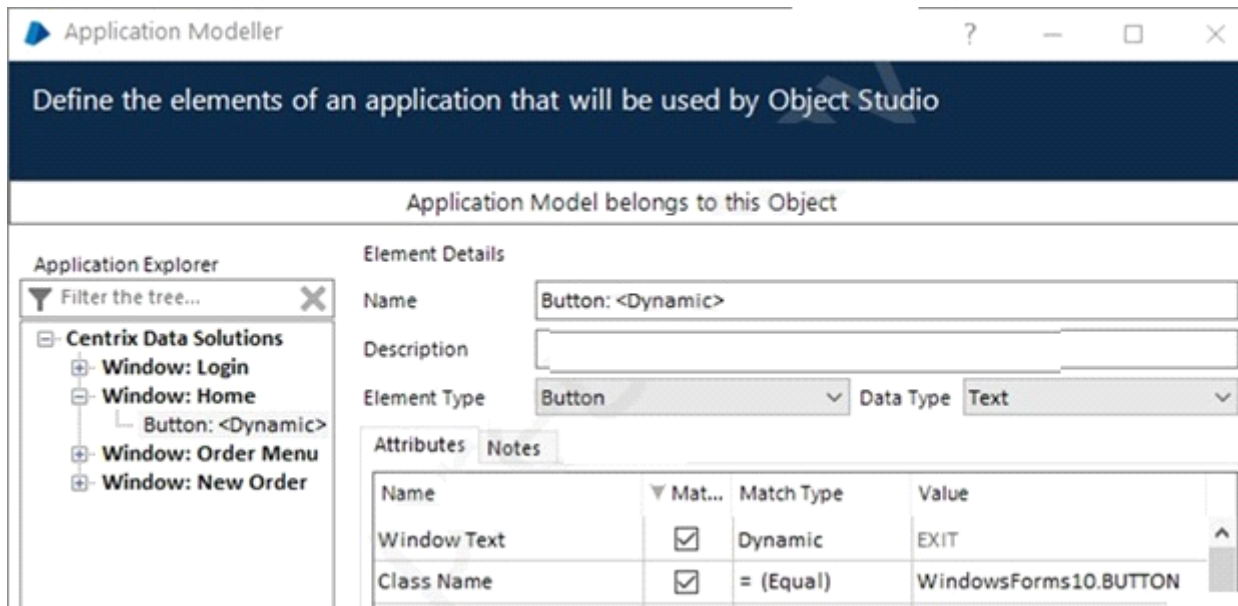
---

The main menu of the application Centrix Data Solutions consists of a series of buttons, as displayed below:



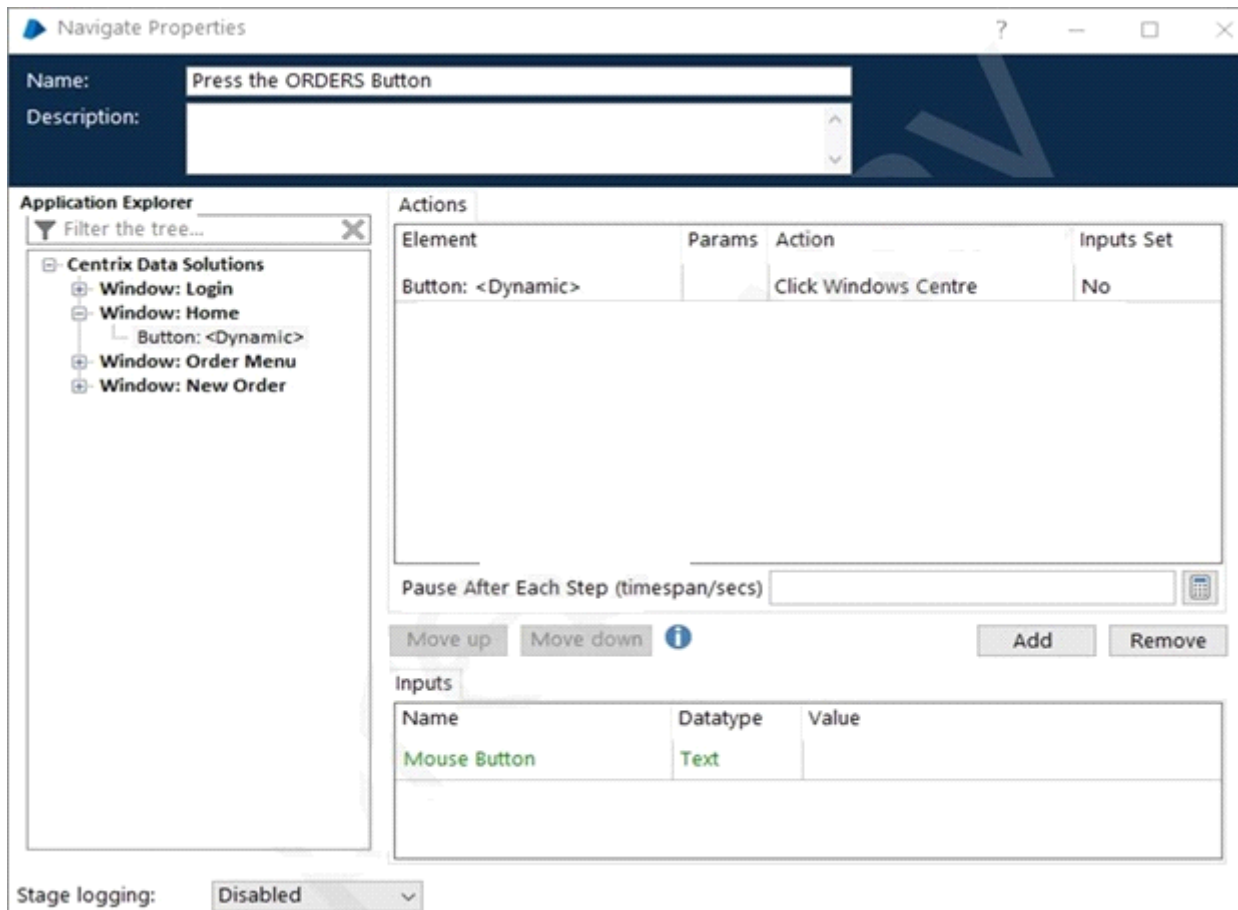
When the buttons spied, the element attributes are all identical, with the exception of the Window Text attribute which differs. The Window Text values for each of the buttons displayed above, are 'HOME', 'ORDERS', 'CUSTOMER', 'STOCK', 'INBOX', 'SETTINGS' and 'EXIT'.

It is described to use a single Dynamic element to interact with each of the menu buttons. The Dynamic button element has been spied and has the following attributes set:



A Navigate stage has been configured to press the ORDERS button:





To ensure the Navigate stage can click the ORDERS button successfully, what additional configuration is required in the Navigate stage?

**Options:**

---

- A-** Update the 'Mouse Button' Inputs value to 'ORDERS1
- B-** Using the Params button to open the Application Element Parameters window, the Window Text match value must be set to 'ORDERS'
- C-** A new element is required with the Window Text value set to 'Orders' and the Match Type set to equal
- D-** The ORDERS button cannot be clicked using this Dynamic button element, because the Window Text attribute value in Application Modeller is set as EXIT

**Answer:**

---

B

## Question 3

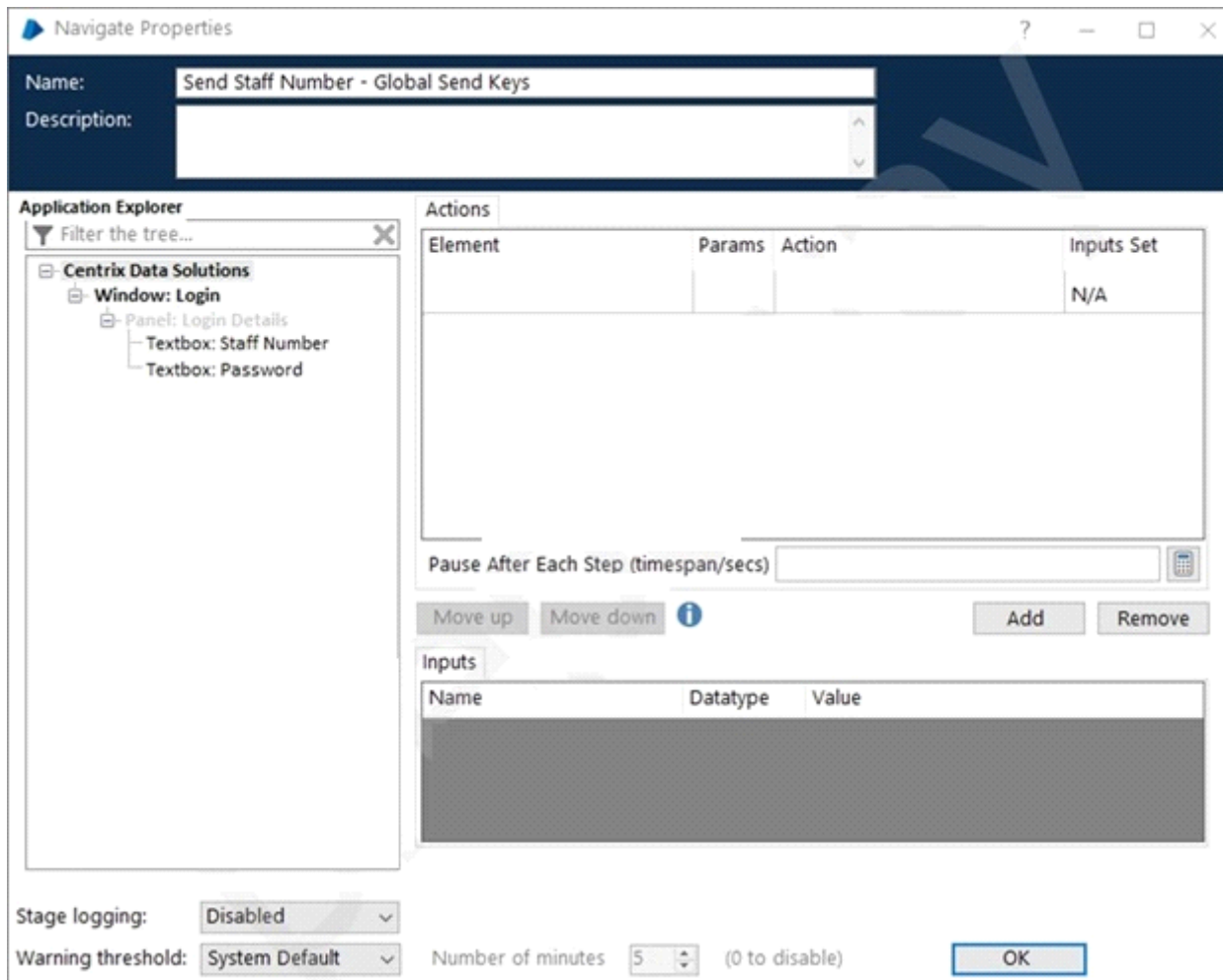
---

**Question Type: MultipleChoice**

---

An Action in a Business Object needs to use Global Send Keys to populate the 'Staff Number' field in an application called Centrix Data Solutions. The application is in focus and the cursor is placed in the Staff Number field.

Examine the stage properties window below:



In order to configure a Global Send Keys action to populate the Staff Number field, which element in the Application Explorer tree displayed above, would you drag to the Element column in the stage, so that this operation can be complete?

**Options:**

---

- A- Textbox: Staff Number
- B- Window: Login
- C- Panel: Login Details
- D- Centrix Data Solutions

**Answer:**

---

A

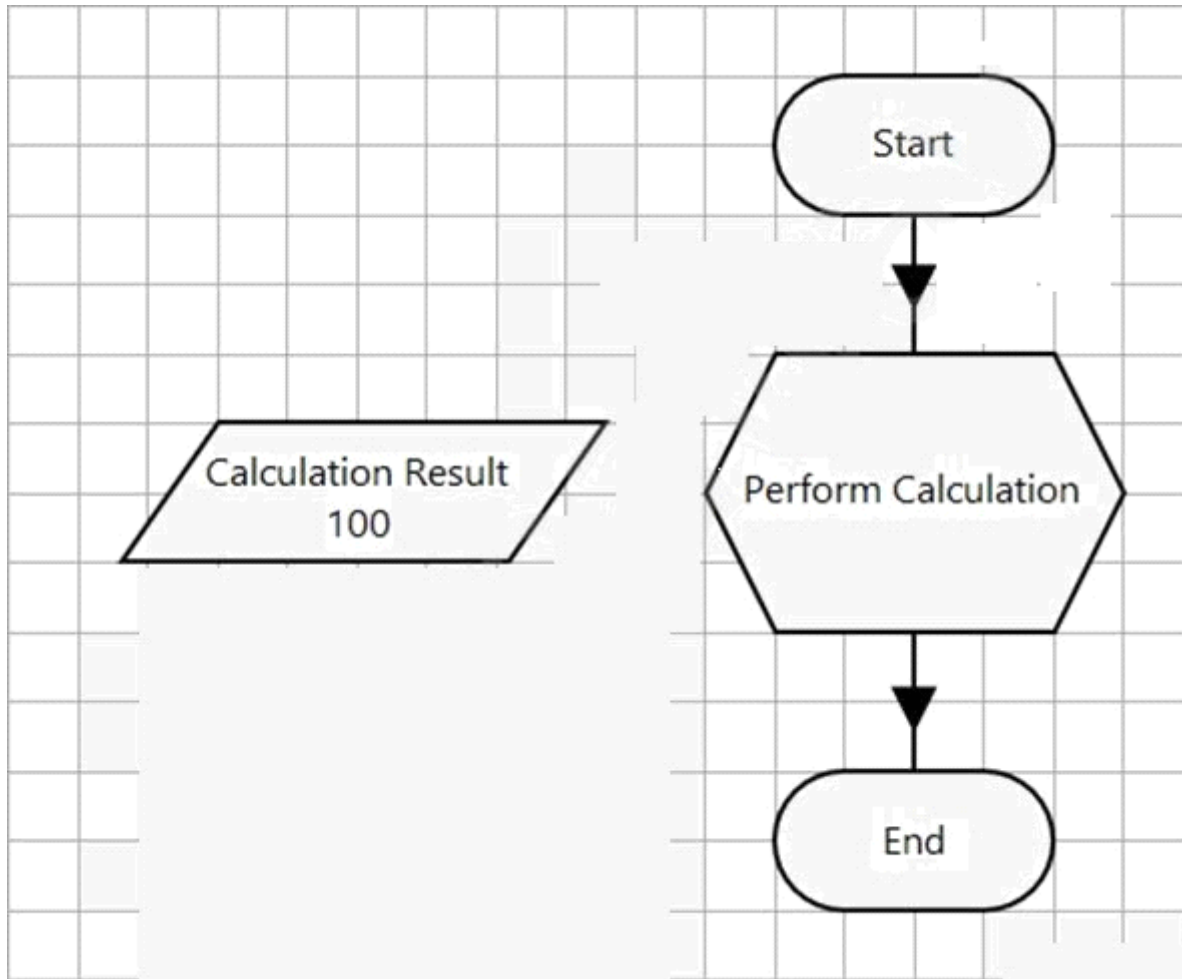
## Question 4

---

**Question Type: MultipleChoice**

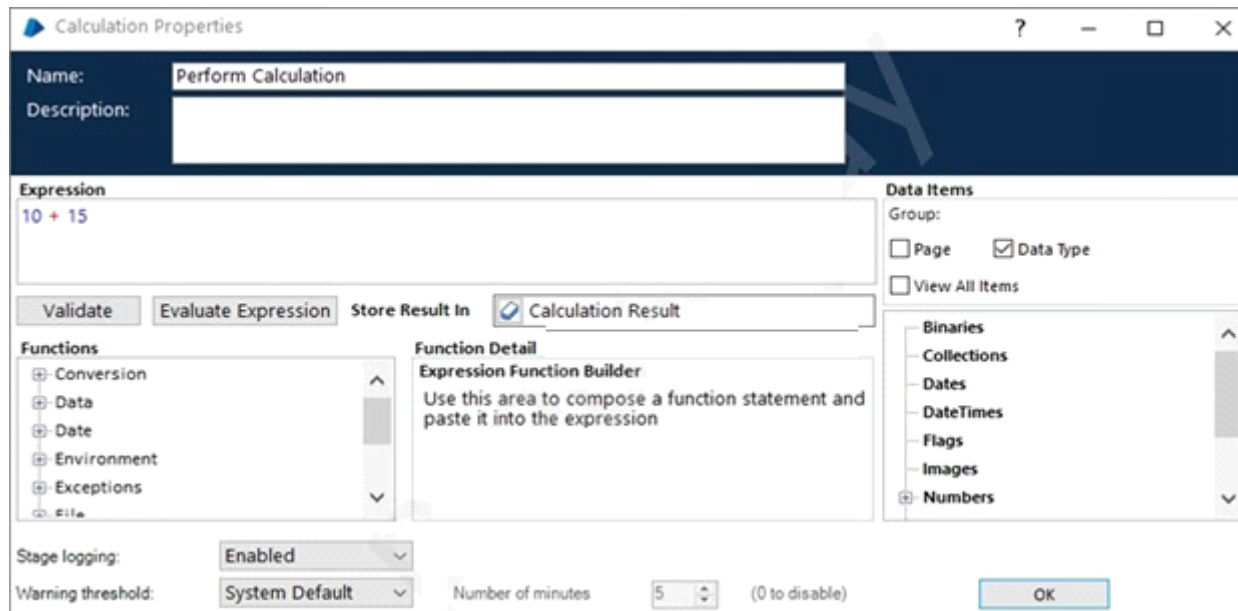
---

Examine the following Blue Prism Process diagram:



The 'Calculation Result' data item is configured as a number data item with an initial value of 100.

The Calculation stage Properties window is displayed below:



After the Process flow has run, which of the following statements are true?

### Options:

- A- The 'Calculation Result' data item value will be 25
- B- The 'Perform Calculation' Calculation stage will throw an exception
- C- The 'Calculation Result' data item value item will be 125
- D- None of these statements are true

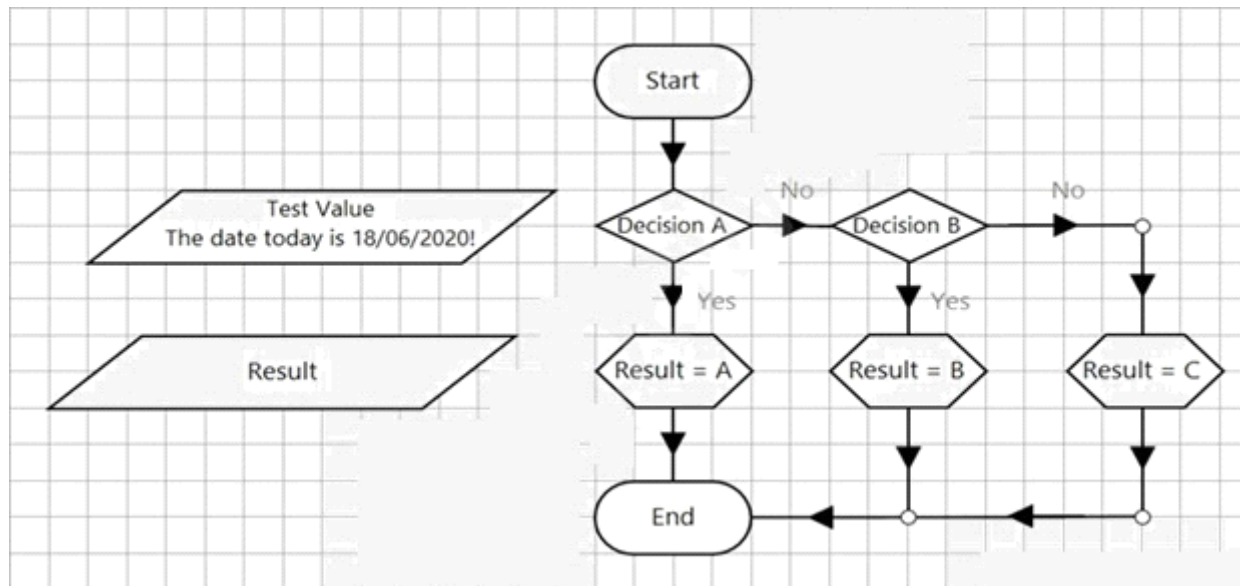
Answer:

C

## Question 5

Question Type: MultipleChoice

Examine the following sub-page of a Blue Prism Process:



The 'Decision A' stage properties window is displayed below:

Decision Properties

Name: Decision A

Description:

Expression

```
InStr([Test Value], "today is ##/##/2020") > 0
```

Validate Evaluate Expression

The 'Decision B' stage properties window is displayed below:



Decision Properties

Name: Decision B

Description:

Expression

```
EndsWith("!", [Test Value])
```

Validate Evaluate Expression

The Calculation stages will output A, B or C to the Result data item.

What will the value of the Result data item be after this page has been run?

**Options:**

---

A- C

B- B

C- Blank - an internal exception will be thrown

D- A

**Answer:**

---

D

## Question 6

---

**Question Type: MultipleChoice**

---

A Blue Prism Process has been developed which contains steps to extract data from a delimited file.

During development, the Developer saves the delimited file to C:\BP\_Proc\Temp folder on their virtual desktop and adds a data item to the process to store this file path. This data item is then used in the process steps to extract the file data.

The production Process must read this file from a network folder, and as the Blue Prism production environment is locked down, the Process configuration cannot be edited in this environment.

How could the data item 'exposure' be updated, so that the process can read the data item containing the relevant file path, regardless of the environment the process is being executed in?

**Options:**

---

- A- Update the data item exposure to 'Statistic'
- B- Update the data item exposure to 'Environment'
- C- Update the data item exposure to 'Session'
- D- Update the data item exposure to 'Shared'

**Answer:**

---

B

**Explanation:**

---

Environmental variables are those variables that are available to all processes and business objects. So, these variables are used as dynamic variables, to make sure they can be used whenever required across the Blue Prism platform.

## Question 7

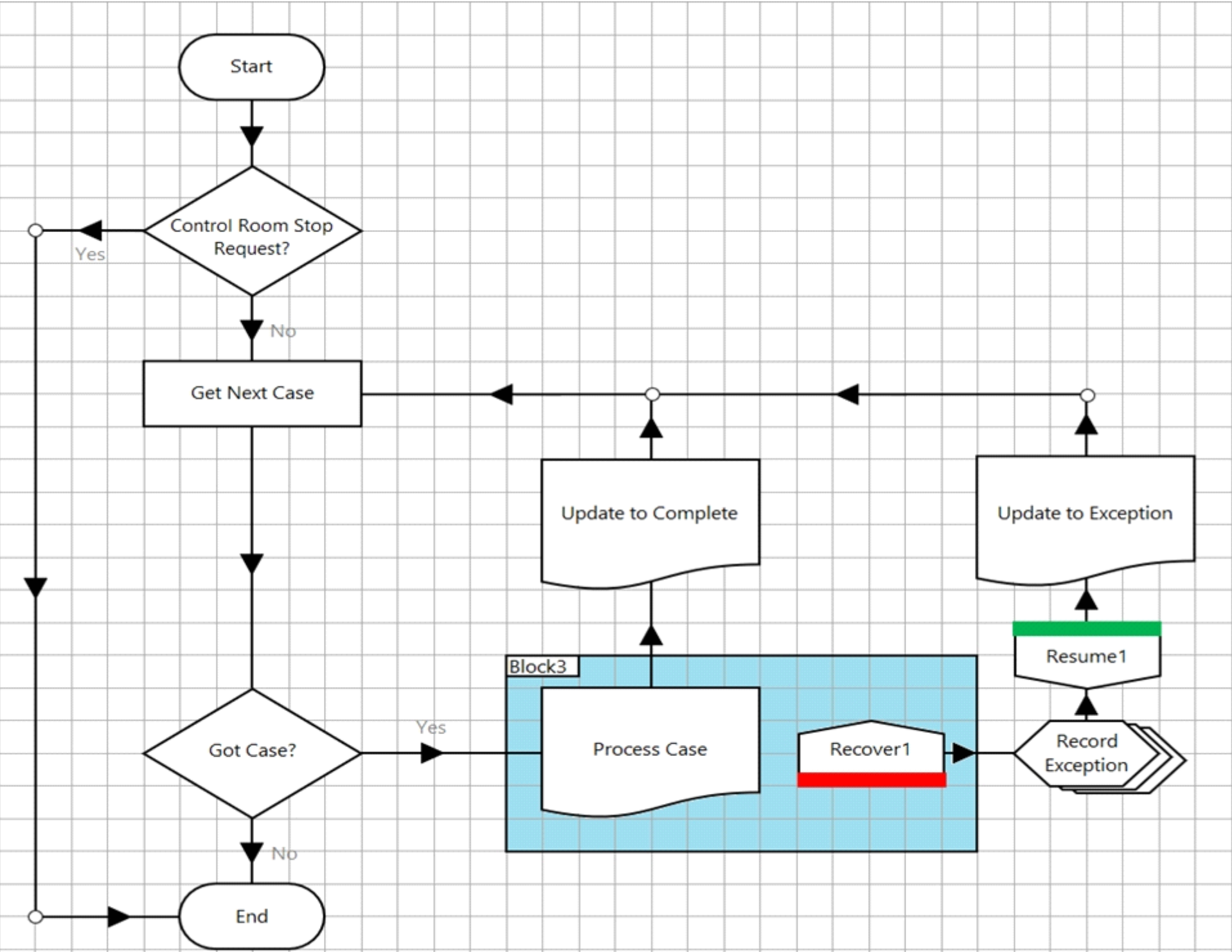
---

**Question Type:** FillInTheBlank

---

Examine the following Blue Prism Process diagram:





The Process contains logic in the 'Control Room Stop Request?' Decision stage, to recognise when a Process Controller has used the 'Request Stop' feature in Control Room, to bring the Process to a controlled stop.

What expression would you use in the 'Control Room Stop Request?' Decision stage, to ensure that the Process recognises that the Control Room 'Request Stop' command has been triggered?

(Remember, Blue Prism expressions are case sensitive)

**Answer:**

---

**Explanation:**

---

<https://bpdocs.blueprism.com/bp-6-10/en-us/frmControlRoom.htm>

## Question 8

---

**Question Type:** MultipleChoice

---

Which of the following can you perform in me System -> Workflow area of Blue Prism? (select all that apply)

**Options:**

---

- A- View the contents of a Work Queue
- B- Refresh a Work Queue
- C- Encrypt a Work Queue
- D- create a Work Queue

**Answer:**

---

C, D

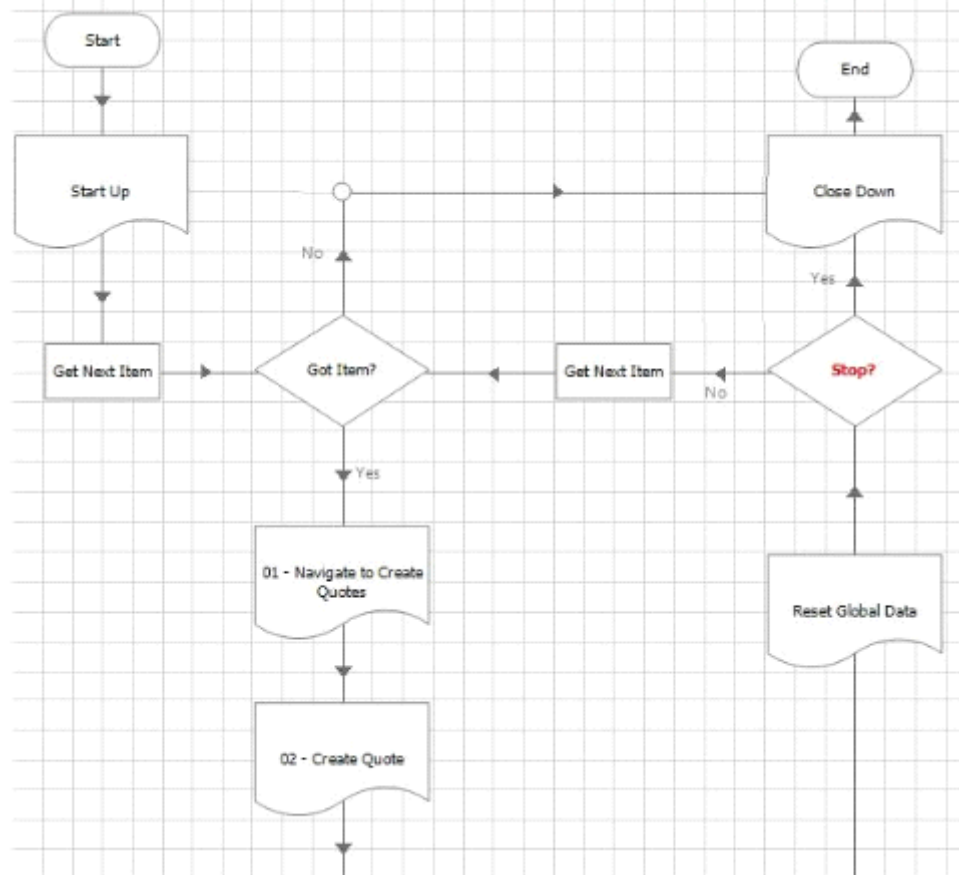
## Question 9

---

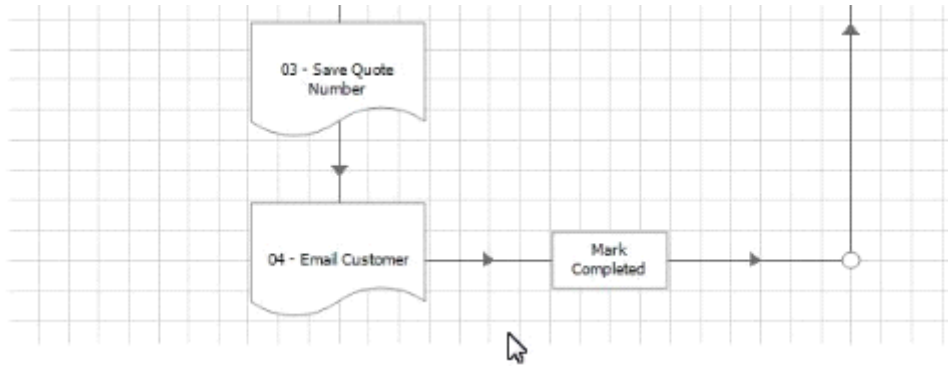
**Question Type:** MultipleChoice

---

Consider the following process flow from the Main Page of a process in Process Studio:







Thinking about the standard Blue Prism Process Templates, what is wrong with this Main Page process flow?

### Options:

---

- A-** There is nothing wrong with the Main Page flow shown in the image, it is a copy of Blue Prism's standard Process Template
- B-** The Stop? decision stage should be removed from the process flow, as Stop time is Configured either within the Scheduler process or stopped via Control Room.
- C-** The Main Page process flow is too high level. For better visibility of the process logic the flow steps hidden in the sub-pages should all be on the main page instead.
- D-** There is no exception handling on this Main Page so any exceptions that 'bubble up' will cause the process to terminate rather than exceptions being handled correctly.
- E-** The Reset Global Data page is not required because sub-page within a process should always use input parameter rather than global data items. There should be no global data to reset.

**Answer:**

---

D

## Question 10

---

**Question Type:** MultipleChoice

---

How can an environment variable value be updated? (select all that apply)

**Options:**

---

- A- By using the Internal - Environment Variables business object
- B- By changing the Blue Prism Server configuration
- C- By updating the value in Control Room
- D- By updating the value in Credential Manager.
- E- By updating the value in System Manager

**Answer:**

---

E

**To Get Premium Files for AD01 Visit**

**<https://www.p2pexams.com/products/ad01>**

**For More Free Questions Visit**

**<https://www.p2pexams.com/blue-prism/pdf/ad01>**

