



# Free Questions for ECSAv10

## Shared by Blevins on 12-12-2023

For More Free Questions and Preparation Resources

[Check the Links on Last Page](#)



## Question 1

Question Type: MultipleChoice

Which of the following contents of a pen testing project plan addresses the strengths, weaknesses, opportunities, and threats involved in the project?

Options:

- A- Project Goal
- B- Success Factors
- C- Objectives
- D- Assumptions

P2P  
exams

Answer:

D

## Question 2

Question Type: MultipleChoice

A penetration test consists of three phases: pre-attack phase, attack phase, and post-attack phase.



Active reconnaissance which includes activities such as network mapping, web profiling, and perimeter mapping is a part which phase(s)?

Options:

---

- A- Post-attack phase
- B- Pre-attack phase and attack phase
- C- Attack phase
- D- Pre-attack phase

Answer:

---

D

## Question 3

---

Question Type: MultipleChoice

---

To locate the firewall, SYN packet is crafted using Hping or any other packet crafter and sent to the firewall. If ICMP unreachable type 13 message (which is an admin prohibited packet) with a source IP address of the access control device is received, then it means which of the following type of firewall is in place?

Options:

---

- A- Circuit level gateway
- B- Stateful multilayer inspection firewall
- C- Packet filter
- D- Application level gateway

Answer:

---

C

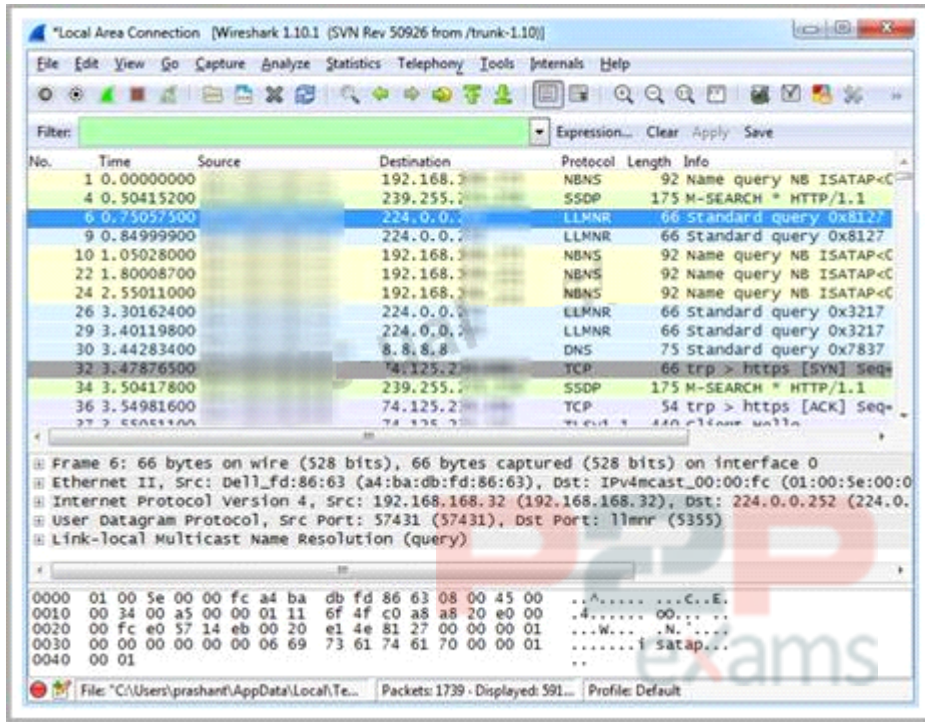
## Question 4

---

Question Type: MultipleChoice

---

Which Wireshark filter displays all the packets where the IP address of the source host is 10.0.0.7?



Options:

- A- ip.dst==10.0.0.7
- B- ip.port==10.0.0.7
- C- ip.src==10.0.0.7
- D- ip.dstport==10.0.0.7

Answer:

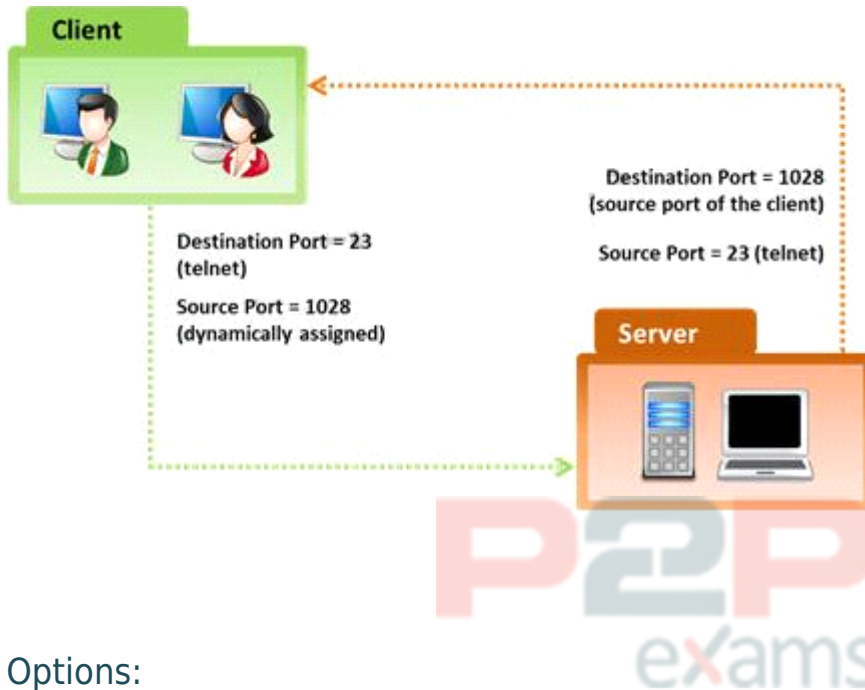
C

## Question 5

Question Type: MultipleChoice

In the TCP/IP model, the transport layer is responsible for reliability and flow control from source to the destination. TCP provides the mechanism for flow control by allowing the sending and receiving hosts to communicate.

A flow control mechanism avoids the problem with a transmitting host overflowing the buffers in the receiving host.



Options:

- A- Sliding Windows
- B- Windowing
- C- Positive Acknowledgment with Retransmission (PAR)
- D- Synchronization

Answer:

C

## Question 6

Question Type: MultipleChoice

Mason is footprinting an organization to gather competitive intelligence. He visits the company's website for contact information and telephone numbers but does not find any. He knows the entire staff directory was listed on their website 12 months. How can he find the directory?

Options:

- A- Visit Google's search engine and view the cached copy
- B- Crawl and download the entire website using the Surffoffline tool and save them to his computer
- C- Visit the company's partners' and customers' website for this information
- D- Use Way Back Machine in Archive.org web site to retrieve the Internet archive

Answer:

D



To Get Premium Files for ECSAv10 Visit

<https://www.p2pexams.com/products/ecsav10>

For More Free Questions Visit

<https://www.p2pexams.com/eccouncil/pdf/ecsav10>

**20%**  
**DISCOUNT**

**P2P**  
exams