



**Free Questions for **TMSTE** by **dumpssheet****

**Shared by **Farmer** on **07-06-2022****

**For More Free Questions and Preparation Resources**

**Check the Links on Last Page**



What is the minimum number of test cases that will be generated when using the Pairwise Testing technique? (What is "N" as a minimum?)

**Options:**

---

- A) 6
- B) 8
- C) 12

**Answer:**

---

B

## Question 2

---

**Question Type: MultipleChoice**

---

From a test-economic perspective, the answer to the question 'what does testing deliver?' uses the following formula:

Test Yield + Test Benefits -- Test Coasts.

What is an example of Test Costs?

**Options:**

---

- A) reworking coast
- B) project management
- C) damage in production
- D) testing hours

**Answer:**

---

A

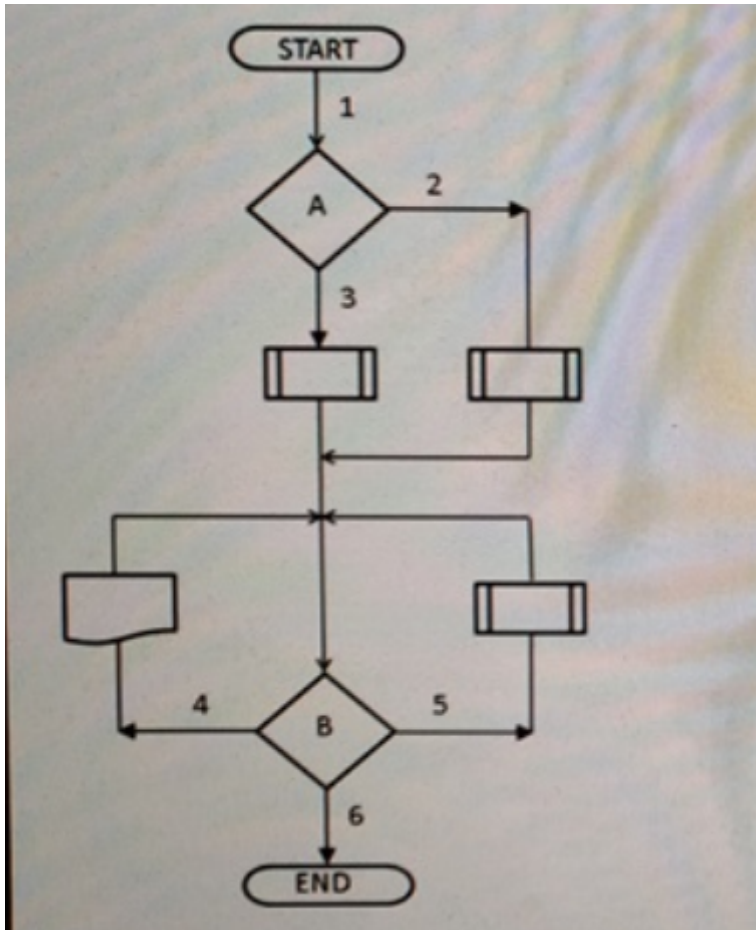
## Question 3

---

**Question Type: MultipleChoice**

---

See the procedure flow below:



What is the minimum number of logical cases that is generated using the Process Cycle Test when the coverage type paths test depth level 2 is used?

**Options:**

---

A) 2

B) 6

C) 8

**Answer:**

---

A

## Question 4

---

**Question Type:** MultipleChoice

---

When entering customer information, an e-mail address is required.

Which test design technique can be used to test the?

**Options:**

---

A) Data Combination Test

B) Process Cycle Test

C) Syntactic Test

**Answer:**

---

C

## Question 5

---

**Question Type: MultipleChoice**

---

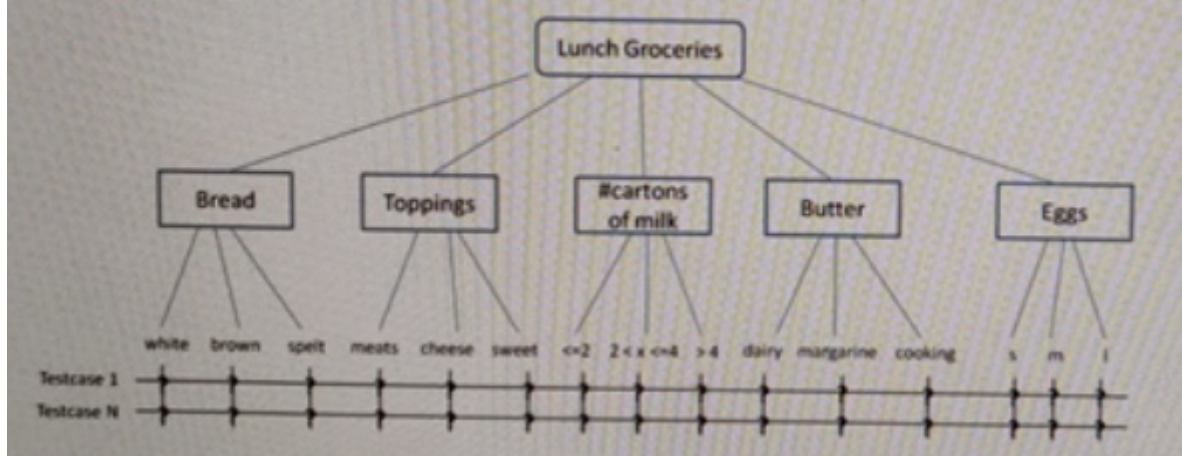
See the image below:

In order to test lunch groceries logical test cases must be created based on the Data Combination Test.

It has been agreed to use an average depth test. This means that Pairwise Testing will be applied on all data.

• bread - toppings - #milk cartons - butter - eggs

Test cases are designed using the classification tree below.



What is the minimum number of test cases that will be generated when using the Pairwise Testing technique? (What is "N" as a minimum?)

**Options:**

- A) 3
- B) 9
- C) 12
- D) 243



**Answer:**

---

D

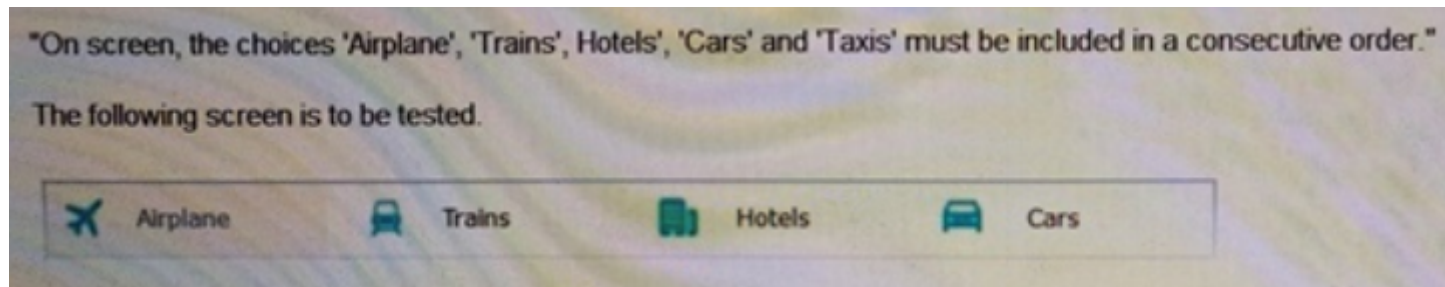
## Question 6

---

**Question Type:** MultipleChoice

---

See the specification and image below:



After analysis, a defect is reported with the cause error in test basis.

What is the error?

**Options:**

---

- A) The Taxis' option could not be selected due to a problem with the infrastructure
- B) The Taxis' option was missing on the screen
- C) The Taxis' option is incorrectly included in the speculation
- D) The developer made a mistake

**Answer:**

---

A

**To Get Premium Files for TMSTE Visit**

<https://www.p2pexams.com/products/tmste>

**For More Free Questions Visit**

<https://www.p2pexams.com/exin/pdf/tmste>

