



Free Questions for 300-415

Shared by Sweet on 03-03-2025

For More Free Questions and Preparation Resources

[Check the Links on Last Page](#)



Question 1

Question Type: MultipleChoice

Which device should be configured with the service chain IP address to route intersite traffic through a firewall?

Options:

- A- vSmart
- B- firewall
- C- spoke WAN Edge
- D- hub WAREdge



Answer:

A

Question 2

Question Type: MultipleChoice

What is the main purpose of using TLOC extensions in WAN Edge router configuration?

Options:

- A- creates hardware-level transport redundancy at the local site
- B- creates an IPsec tunnel from WAN Edge to vBond Orchestrator
- C- transports control traffic to a redundant vSmart Controller
- D- transports control traffic w remote-site WAN Edge routers

Answer:

D

Question 3

Question Type: MultipleChoice

What is the order of operations for software upgrades of Cisco SD-WAN nodes'?

Options:

- A- vBond vManage vSmart WAN Edge
- B- vManage vBond WAN Edge. vSmart
- C- vManage vSmart, vBond, WAN Edge
- D- vManage vBond vSraart WAN Edge

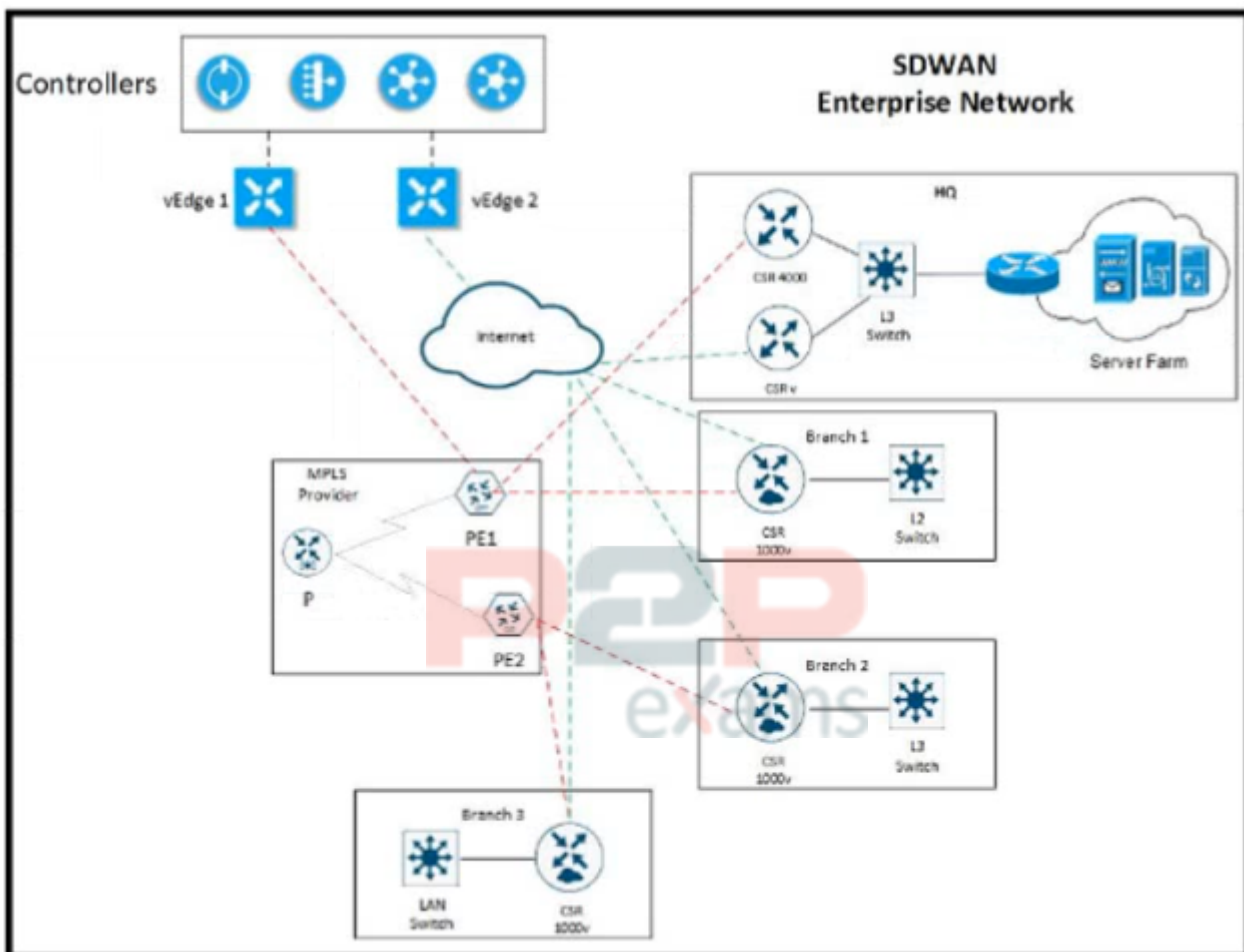
Answer:

D

Question 4

Question Type: MultipleChoice

Refer to the exhibit.



Refer to the exhibit The network team must configure EIGRP peering at HQ with devices in the service VPN connected to WAN Edge CSRv. CSRv is currently configured with

```

viptela-system:system
 device-model      vedge-cloud
 host-nam         CSRv
 location         CA
 system-ip        10.4.4.4
 domain-id        1
 site-id          1
 organization-name ABC
 clock timezone   US/Newyork
 vbond 10.10.0.1 port 12346

```

```

omp
 no shutdown
 graceful-restart

```

Which configuration on the WAN Edge meets the requirement?

A)

```

vpn 0
 interface ge0/0
  description "Internet Circuit"
  ip address 209.165.200.229/30
  tunnel-interface
  encapsulation ipsec
  color public-internet
  allow-service all

router
 eigrp
  address-family ipv4-unicast
  maximum-path paths 4
  network 10.0.0.0/28
  redistribute omp

```

```

vpn 512
 interface eth0
  shutdown

```

B)

```

vpn 0
 interface ge0/0
  description "Internet Circuit"
  ip address 209.165.200.229/30
  tunnel-interface
  encapsulation ipsec
  color public-internet
  allow-service all

router
 eigrp
  address-family ipv4-unicast
  maximum-path paths 4
  network 10.0.0.0/28
  redistribute omp

```

```

vpn 512
 interface eth0
  shutdown

```

C)

```

vpn 0
interface ge0/0
description "**** Internet Circuit ****"
ip address 209.165.200.229/30
tunnel-interface
encapsulation ipsec
color public-internet
allow-service all

vpn 1
router
eigrp
address-family ipv4-unicast
maximum-path paths 4
network 10.0.0.0/28
redistribute omp

interface ge0/1
ip address 10.0.0.1/28

vpn 512
interface eth0
shutdown

```



D)

```

vpn 0
vpn 1
interface ge0/0
description "**** Internet Circuit ****"
ip address 209.165.200.229/30
tunnel-interface
encapsulation ipsec
color public-internet
allow-service all

router
eigrp
address-family ipv4-unicast
maximum-path paths 4
network 10.0.0.0/28
redistribute omp

interface ge0/1
ip address 10.0.0.1/28

vpn 512
interface eth0
shutdown

```



Options:

- A- Option A
- B- Option B
- C- Option C
- D- Option D

Answer:

C

Question 5

Question Type: MultipleChoice

Which VManage dashboard is used to monitor the next-hop reachability between two devices traversing through OMP for a service VPN?

Options:

- A- Troubleshooting > App Route Visualization
- B- Troubleshooting > Tunnel Health
- C- Troubleshooting > Simulate Flows
- D- Troubleshooting > Packet Capture

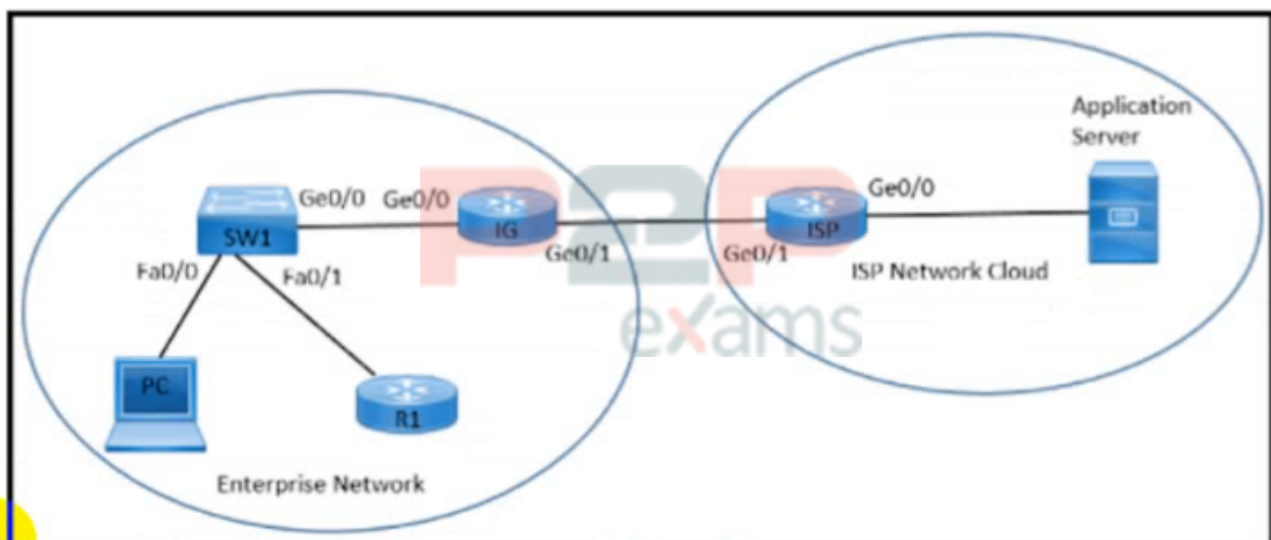
Answer:

C

Question 6

Question Type: MultipleChoice

Refer to the exhibit.



Refer to the exhibit. An enterprise network is connected with an ISP network on an 80 Mbps bandwidth link. The network operation team observes 100 Mbps traffic on the 1Gig-ISP link during peak hours. Which configuration provides bandwidth control to avoid traffic congestion during peak hours?

A)

```

policy-map CUS_PMAP
class CUS_CMAP
  police 80000000 300000
!
interface gigabitethernet 0/0
description *** TO SW ***
ip address 10.0.10.5 255.255.255.0
service-policy input CUS_PMAPd

```

B)

```

policy-map SHAPE_MAP
class class-default
  shape average 80000000
!
interface gigabitethernet 0/1
description *** TO ISP ***
ip address 10.0.20.5 255.255.255.0
service-policy output SHAPE_MAP

```



C)

```

policy-map CUS_PMAP
class CUS_CMAP
  police 80000000 300000
!
interface gigabitethernet 0/0
description *** TO ISP ***
ip address 10.0.20.1 255.255.255.0
service-policy input CUS_PMAP

```

D)

```

policy-map SHAPE_MAP
class class-default
  shape average 8000000
!
interface gigabitethernet 0/1
description *** TO IG rack B455:A882:G718 ***
ip address 10.0.20.5 255.255.255.0

```



Options:

- A- Option A
- B- Option B
- C- Option C
- D- Option D

Answer:

B

Question 7

Question Type: MultipleChoice

What are the two impacts of losing vManage connectivity to fabric in the Cisco SD-WAN network?
(Choose two)

Options:

- A- Policy changes propagation stops
- B- Statistics collection stops
- C- BFD peering between WAN Edge devices are unestablished
- D- Creation of templates is impossible
- E- IPsec tunnels tear down for WAN Edge devices.

Answer:

A, B

Question 8

Question Type: MultipleChoice

What happens if the intelligent proxy is unreachable in the Cisco SD-WAN network?

Options:

- A- The grey-listed domains are unresolved
- B- The Cisco Umbrella Connector locally resolves the DNS request
- C- The block-listed domains are unresolved
- D- The Cisco Umbrella Connector temporarily redirects HTTPS traffic

Answer:

A

To Get Premium Files for 300-415 Visit

<https://www.p2pexams.com/products/300-415>

For More Free Questions Visit

<https://www.p2pexams.com/cisco/pdf/300-415>

20%
DISCOUNT

P2P
exams