



**Free Questions for [CBAF-001](#) by [go4braindumps](#)**

**Shared by [Sosa](#) on [06-06-2022](#)**

**For More Free Questions and Preparation Resources**

**[Check the Links on Last Page](#)**

## Question 1

---

**Question Type:** MultipleChoice

---

Which of the following actions could sustain business change?

### Options:

---

- A- Develop the coaching skills of selected staff members.
- B- Establish clear benefits for selected, powerful stakeholders.
- C- Retain the previous system and its associated processes.
- D- Ensure that improved staff performance is not rewarded.

### Answer:

---

A

## Question 2

---

**Question Type:** MultipleChoice

---

An IT department needs to upgrade its hardware to run the new version of an established operating system. The cost of this required upgrade is \$2 million. As an alternative, the IT director has suggested that the company should change to a completely different operating system. Although this will cost \$6 million, the change will bring many other benefits, including cheaper maintenance costs and increased security. What is the avoided cost in his proposal?

**Options:**

---

- A- \$2 million.
- B- \$4 million.
- C- \$6 million.
- D- \$8 million.

**Answer:**

---

A

## Question 3

---

**Question Type: MultipleChoice**

---

What is the business analyst doing when he or she compares the BAM with the current business situation?

**Options:**

---

- A- Conceptual modelling.
- B- Analysing perspective.
- C- Gap analysis.
- D- Defining CATVVOE.

**Answer:**

---

C

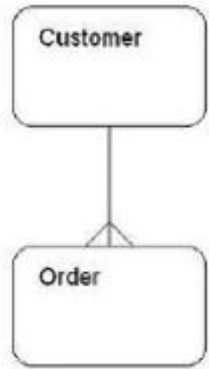
## Question 4

---

**Question Type: MultipleChoice**

---

The entity relationship model below shows the relationship between Customer and Order. Which of the following business rules is correct?



**Options:**

---

- A- An order may be placed by many customers.
- B- A customer may place many orders.
- C- A customer may never place an order.
- D- An order need not be placed by a customer.

**Answer:**

---

B

**Question 5**

---

**Question Type: MultipleChoice**

---

Which of the following lists includes only activities that are defined as support activities in the value chain?

**Options:**

---

- A- Firm infrastructure, service, marketing and sales.
- B- Inbound logistics, outbound logistics, operations.
- C- Procurement, technology development, human resource management.
- D- Service, procurement, firm infrastructure.

**Answer:**

---

C

## Question 6

---

**Question Type: MultipleChoice**

---

Which of the following would be an appropriate name for a use case that allows a project manager to allocate resources to a project?

**Options:**

---

- A- Assign resources.
- B- Resource.
- C- Project Manager.
- D- Project.

**Answer:**

---

A

## Question 7

---

**Question Type: MultipleChoice**

---

Which of the following would BEST be managed with the "keep satisfied" stakeholder management strategy?

**Options:**

---

- A- Those with high power/influence and no interest in the project.

- B-** Those with high power/influence and some interest in the project.
- C-** Those with some power/influence and high interest in the project.
- D-** Those with some power/influence and some interest in the project.

**Answer:**

---

B

## Question 8

---

**Question Type:** MultipleChoice

---

A business analyst wishes to show that a company wants to store information about different types of product. Some attributes are common to every product (for example; product name) but other attributes only apply to certain product types. For example, product material only applies to accessory products. Which of the following constructs could the business analyst use to represent this on a class model?

**Options:**

---

- A-** An association class.



- B-** A many-to-many multiplicity.
- C-** A generalization structure.
- D-** An <<extend>> structure.

**Answer:**

---

C

## Question 9

---

**Question Type:** MultipleChoice

---

Which of the following is an advantage to the host organization of using an internal consultant to conduct a business analysis project?

**Options:**

---

- A-** They will have a broad business perspective.
- B-** They will be familiar with the host organization.
- C-** They will only be paid when they are needed.
- D-** They will have a dispassionate view of the host organization.

**Answer:**

---

B

**To Get Premium Files for CBAF-001 Visit**

**<https://www.p2pexams.com/products/cbaf-001>**

**For More Free Questions Visit**

**<https://www.p2pexams.com/gaqm/pdf/cbaf-001>**

