



Free Questions for [GASF](#) by [go4braindumps](#)

Shared by [Mayer](#) on [15-04-2024](#)

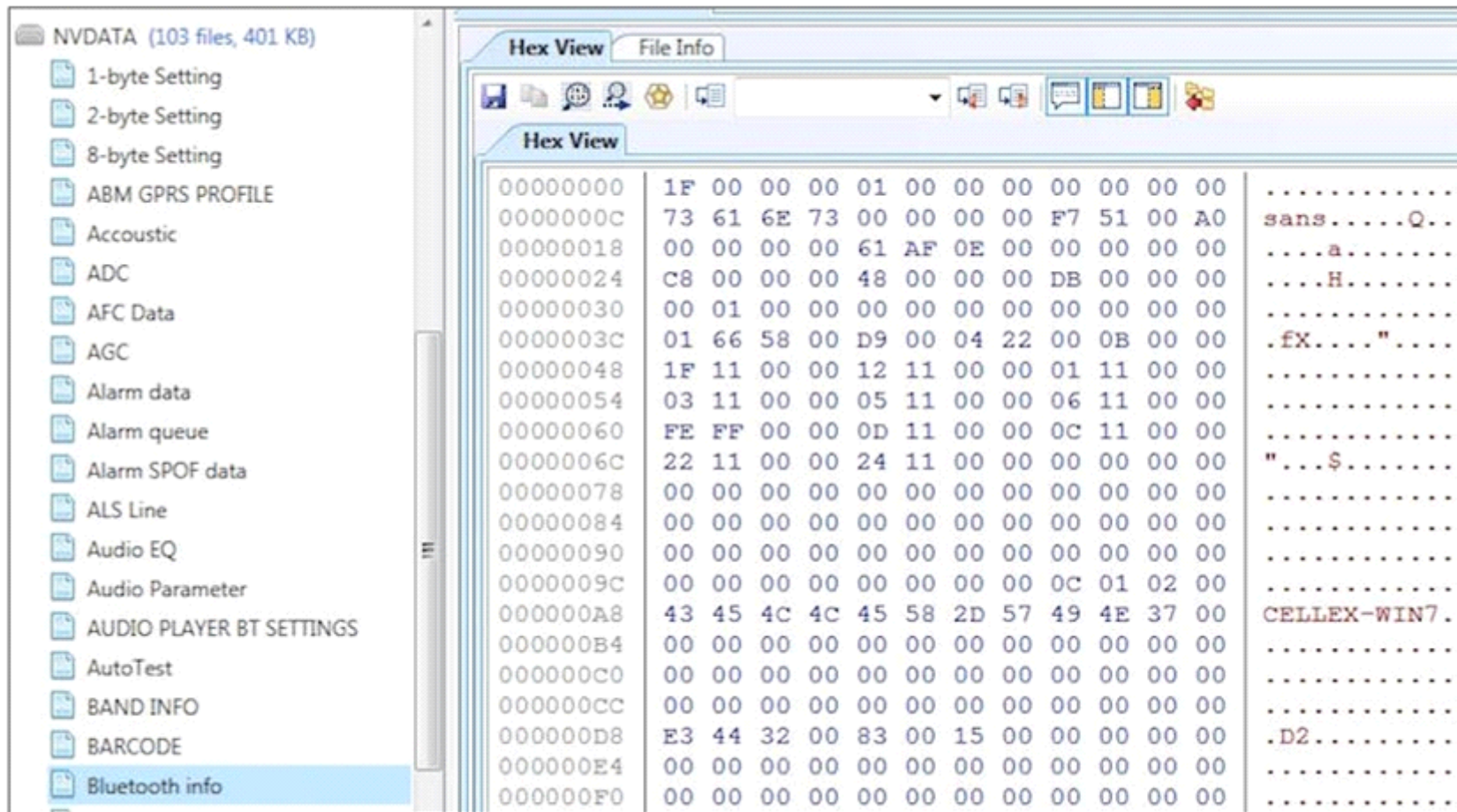
For More Free Questions and Preparation Resources

[Check the Links on Last Page](#)

Question 1

Question Type: MultipleChoice

Examine the file, Bluetooth, what is the name of the device being examined?



Options:

A- CON

B- WIN7

C- CON...M

D- WIN10

Answer:

B

Question 2

Question Type: MultipleChoice

Where are iOS Class keys stored?

Options:

A- In iCloud

B- Within the metadata of each file

C- Between the flash memory and the system area on the device

D- In effacable storage

Answer:

B

Question 3

Question Type: MultipleChoice

Which of the following is of most concern when attempting to root an Android device such as Google Glass when conducting a forensic acquisition?

Options:

- A- Rooting this device will overwrite the data partition
- B- The manufacturer warranty is voided
- C- Device security is altered
- D- Traces of the root are left behind

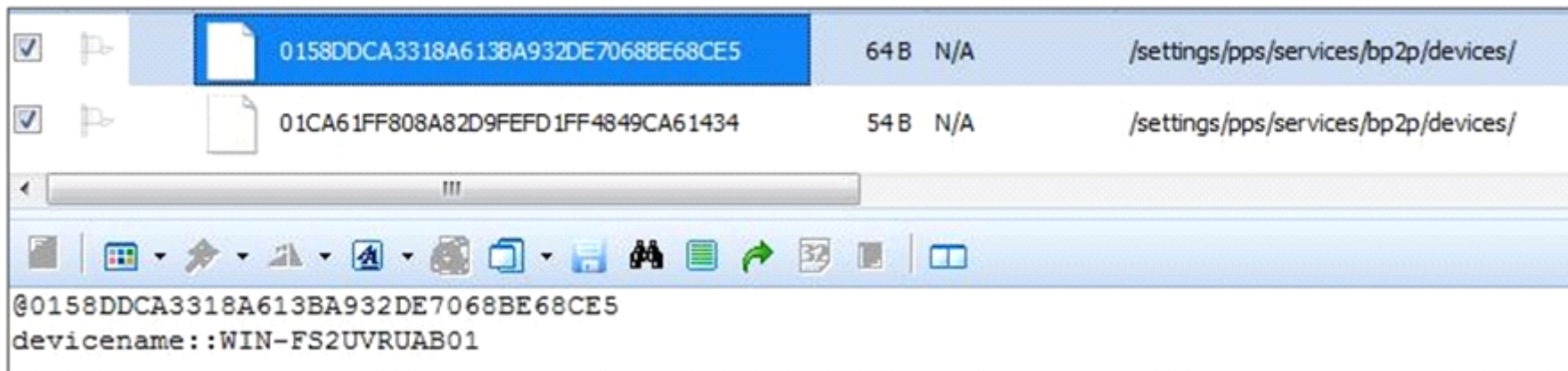
Answer:

A

Question 4

Question Type: MultipleChoice

What information can you determine by reviewing the (bp2p) file from a BlackBerry OS10 handset?



Options:

- A- Cloud accounts
- B- Bluetooth pairings

C- Paired computers

D- Connected Wireless Access points

Answer:

B

Question 5

Question Type: MultipleChoice

What is often more of a challenge with mobile forensics than other areas of forensics?

Options:

A- Analysis and Reporting of Information

B- Isolation of devices

C- Identification of evidence

D- Evidence collection

Answer:

D

Question 6

Question Type: MultipleChoice

When dealing with mobile devices and flash memory, and the fact that data in memory constantly changes even when the device is simply powered on. It is best practice to:

Options:

- A- Only acquire from devices in an OFF state
- B- Document those changes that were made to the device during the forensic process
- C- Always use a write-blocker when dealing with mobile devices
- D- Always remove the battery from a device before acquisition

Answer:

B

Explanation:

mobile device because they communicate using modern protocols such as AT commands and others.

Because of these factors, the goal in forensic becomes to make as little change as possible, and to document those changes that were made to the device during the forensic process.

Question 7

Question Type: MultipleChoice

Which of the following is a backup tool for smartphones?

Options:

- A- Ovi Suite
- B- Lifeblog
- C- Absinthe

D- Mbackup

Answer:

A

Explanation:

malware and the application Lifeblog is a timelinening tool for Nokia users.

Question 8

Question Type: MultipleChoice

Which of the following devices below runs the Apple iOS operating system?

Options:

A- Apple TV

B- MacBook Pro

C- iPod Touch

D- Apple Watch

Answer:

C

Explanation:

including the iPhone, iPad and iPod Touch. The Apple watch runs Watch OS, which is similar to iOS. MacBook

Pros run Mac OSX and the Apple TV is using a new operating system called tvOS.

Question 9

Question Type: MultipleChoice

How would an examiner review items deleted from a SQLITE database?

Options:

- A- Using a Hex Viewer
- B- Converting the database to a txt file
- C- Reviewing the file header
- D- Selecting the raw data from the table

Answer:

A

Question 10

Question Type: MultipleChoice

What type of acquisition has occurred for this device?



Options:

A- Physical

B- File system

C- Bypass lock

D- Logical

Answer:

B

To Get Premium Files for GASF Visit

<https://www.p2pexams.com/products/gasf>

For More Free Questions Visit

<https://www.p2pexams.com/giac/pdf/gasf>

