



Free Questions for H12-891_V1.0 by go4braindumps

Shared by Vance on 20-10-2022

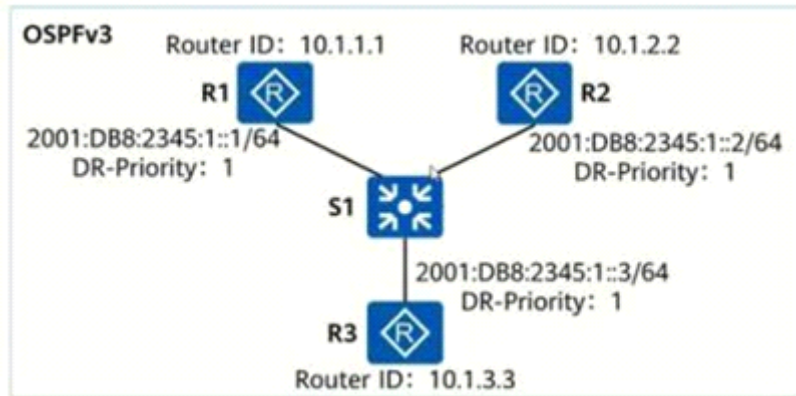
For More Free Questions and Preparation Resources

Check the Links on Last Page

Question 1

Question Type: MultipleChoice

OSPFV is the GP running on the P4 network) OSPF3 is the KGP running on the IP6 network. OsPFV works the same basic way as OSPF2, such as elections for DR and BDR. As shown in the figure, an engineer uses three routers for IP6 service testing, and he wants to interconnect the IPv6 network by running OSPFv3 Which of the following statements is correct regarding the election of the network DR?



Options:

A- After the network converges, R1 is DR

B- After the network converges, the engineer modifies the priority of R1 to 100, the priority of R2 to 10, and R3 to the default value.

When the network converges again, R1 is DR and R2 is BDR

- C-** After the network converges, the broadcast link adds a device, R4, with a priority of 150 When the network converges again, R4 is DR
- D-** After the network converges, R1 is powered off and restarted, and when the network converges again, R3 is DR

Answer:

B, C, D

Question 2

Question Type: MultipleChoice

As shown in the figure, SWA, SWB, SWC all run RSTP, GED/O/2 on SWB Ports and GEO/0/1 ports on SWC have a port role of ? Radio

Options:

- A-** Alternative port, Backup port
- B-** Backup port, root port
- C-** Root port, Designated port
- D-** Backup port, Alternative port

Answer:

D

Question 3

Question Type: MultipleChoice

result :(moloteric question).

```
[Huawei]display mpls lsp
      LSP Information: LDP LSP
FEC      In/Out Label  In/Out IF      Vrf Name
1.1.1.1/32  NULL/1024      -/GEO/0/2
1.1.1.1/32  1027/1024     -/GEO/0/2
2.2.2.2/32  NULL/3         -/GEO/0/2
2.2.2.2/32  1028/3        -/GEO/0/2
3.3.3.3/32  NULL/3         -/GEO/0/0
3.3.3.3/32  1026/3        -/GEO/0/0
4.4.4.4/32  3/NULL        -/-
```

Options:

- A- When sending a packet with a destination address of 4444, it is sent without labeling.
- B- When the router receives a packet with the label 1024, it replaces the label with 1027 and sends it.
- C- When a packet with a destination address of 2222 is sent , it is sent without labeling.
- D- When sending a packet with a destination address of 3333, label 1026 and send it.

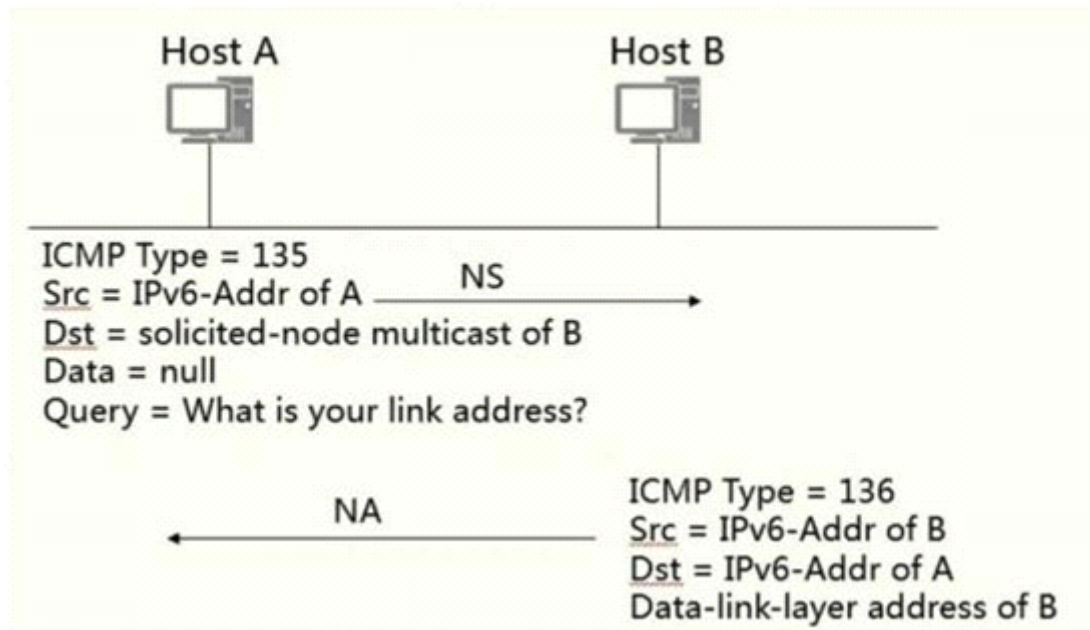
Answer:

C

Question 4

Question Type: MultipleChoice

Is the following figure correct about NDP's process of resolving link-layer addresses?



Options:

A- Right

B- Wrong

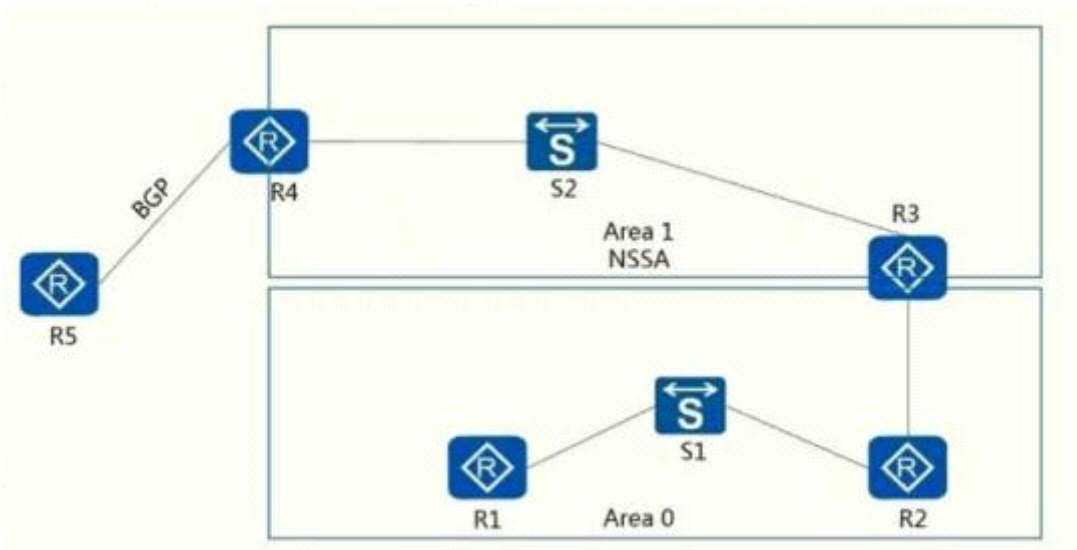
Answer:

A

Question 5

Question Type: MultipleChoice

A multi-protocol network, the topology is shown in the figure. Take a closer look at the topology, router R4 (in Area 0) is introduced into the OSPF process via the routes learned by BGP. So what categories of LS4 will R3 advertise to zone 0? (Multiple choice questions).



Options:

A- 5 ?LSA

B- 7 ?LSA

C- 1 ?LSA

D- 4 ?LSA

E- 2 ?? ??

Answer:

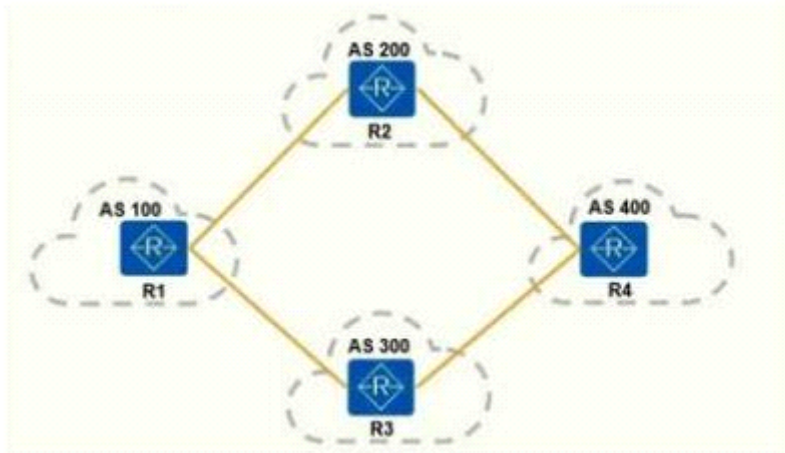
A, C, E

Question 6

Question Type: MultipleChoice

As shown in the figure, as shown, as the AS10 has two paths to access THEA1, the optimal route passed from the 4S23 by default is now sprinkled with S00 to ass4O The odds belt wins even more worrying. Therefore, in the R2 configuration as follows, after the completion of the coordination, it is found that the most worrying route has not changed, and some operations can be adjusted to make the configuration

```
??[ R2]pas-path-fiter l permit "4D0& [2]pouteplcity med permit node 10[R2-routepolicyli- match aspath-ilterl[R2-oute-policylapplycoast.20
```

Options:

- A- Configure compare-different-as-med under the BGP process for R2
- B- Configure destiny-med under the BGP process for R1
- C- Configure compare-different-as-med under the BGP process of R1
- D- Configure the targeted-med under the BGP process for R2

Answer:

B, C

To Get Premium Files for H12-891_V1.0 Visit

https://www.p2pexams.com/products/h12-891_v1.0

For More Free Questions Visit

<https://www.p2pexams.com/huawei/pdf/h12-891-v1.0>

