



**Free Questions for HPE6-A69 by go4braindumps**

**Shared by Morrison on 29-01-2024**

**For More Free Questions and Preparation Resources**

**Check the Links on Last Page**

## Question 1

---

### Question Type: MultipleChoice

---

A customer is installing a new ArubaOS-CX switch. The customer does not change the factory default QoS configuration. The switch receives an 802.1Q tagged VOIP frame on a port. The header contains a DSCP value of EF(46) and the frame has an 802 ip value of 5.

How will the switch forward the frame?

### Options:

---

- A- Forwards it based on the DSCP value in the frame
- B- The switch trusts the settings and it forwards the frame with the current settings
- C- Forwards it based on the 802 ip value in the frame
- D- Forwards the frame with best effort forwarding

### Answer:

---

A

## Question 2

---

**Question Type: MultipleChoice**

---

A network administrator has deployed the following (partial) configuration:

```
SWITCH(config)# access-list ip copp-mgmt  
SWITCH(config-acl-ip)# permit ip 10.254.254.0/24 any  
SWITCH(config-acl-ip)# deny any any any  
SWITCH(config-acl-ip)# exit  
SWITCH(config) # apply access-list ip copp-mgmt control-plane vrf mgmt
```

What is the effect of this policy?

**Options:**

---

- A-** Only subnet 10.254.254.0/24 is allowed to communicate with ip-addresses configured on VRF mgmt
- B-** COPP traffic is restricted to subnet 10.254.254 0/24
- C-** Only ssh traffic to ip-address in VRF mgmt is restricted to 10 254 254 0/24 network
- D-** Only subnet 10.254 2540/24 is allowed to communicate with CoPP-addresses configured on VRF mgmt

**Answer:**

---

C

**Question 3**

---

**Question Type: MultipleChoice**

---

You need to establish a baseline summary of an ArubaOS-CX switch resource utilization after enabling new NAE scripts. How should you define a baseline for switch resource consumption? (Select two.)

**Options:**

---

- A- show system cpu
- B- top memory
- C- show system memory
- D- top cpu

**Answer:**

---

B, D

## Question 4

---

**Question Type: MultipleChoice**

---

The customer is implementing new ArubaOS-CX 6300 switches into an environment that has third-party switches and uses centralized authentication from Microsoft Active Directory and TACACS\* servers

What would be a valid configuration requirement for ArubaOS-CX switches for centralized user authentication?

**Options:**

---

- A- Importing a TACACS server certificate for TLS authentication into the switch
- B- Defining a TACACS server group for authentication in the switch configuration
- C- Enabling the active directory VSA in the switch for radius authentication
- D- Using a PAM extension for LDAP authentication with Active Directory Server.

**Answer:**

---

C

## Question 5

---

**Question Type:** MultipleChoice

---

A customer is having a performance issue on the network and has received complaints about users experiencing Intermittent connectivity. After performing a packet capture, It is determined that there is unwanted UDP port 68 traffic being broadcast

6300W%wit

To mitigate this issue, which ArubaOS-CX 6300M switch feature would be best to implement?

**Options:**

---

- A- dhcpv4-snooping
- B- private-vlan
- C- bcms-optimization
- D- broadcast-limit

**Answer:**

---

A

## Question 6

---

**Question Type: MultipleChoice**

---

A customer with an ArubaOS-CX 6300M switch is having a performance issue on the network and has received complaints about users experiencing intermittent connectivity. After performing troubleshooting it is determined that many of the local websites on the LAN that users are unable to reach are resolved to an invalid MAC address.

What are the minimum steps that should be performed to mitigate this condition? (Select two)

**Options:**

---

- A- Implement arp ACLs to define trusted MAC address to IP bindings
- B- Enable 'arp inspection' on the end-user physical ports
- C- Enable 'arp inspections on the end-user VLAN.
- D- Implement dhcpv4-snooping
- E- Enable 'arp inspection untrusted on the end-user physical ports

**Answer:**

---

A, C

## Question 7

---

**Question Type:** MultipleChoice

---

Before designing a new network solution for a customer with between 2398 and 5264 employees, you should gather information from the customer about their wired network needs.

What are valid questions to determine their wired network needs? (Select two.)

**Options:**

---

- A- How experienced is your networking team?
- B- What is the current cabling deployed in the location?
- C- What are the current device capabilities and topology?
- D- Do you plan to add new customer services?
- E- How much do you plan to spend in the new wired network?

**Answer:**

---

B, E

## Question 8

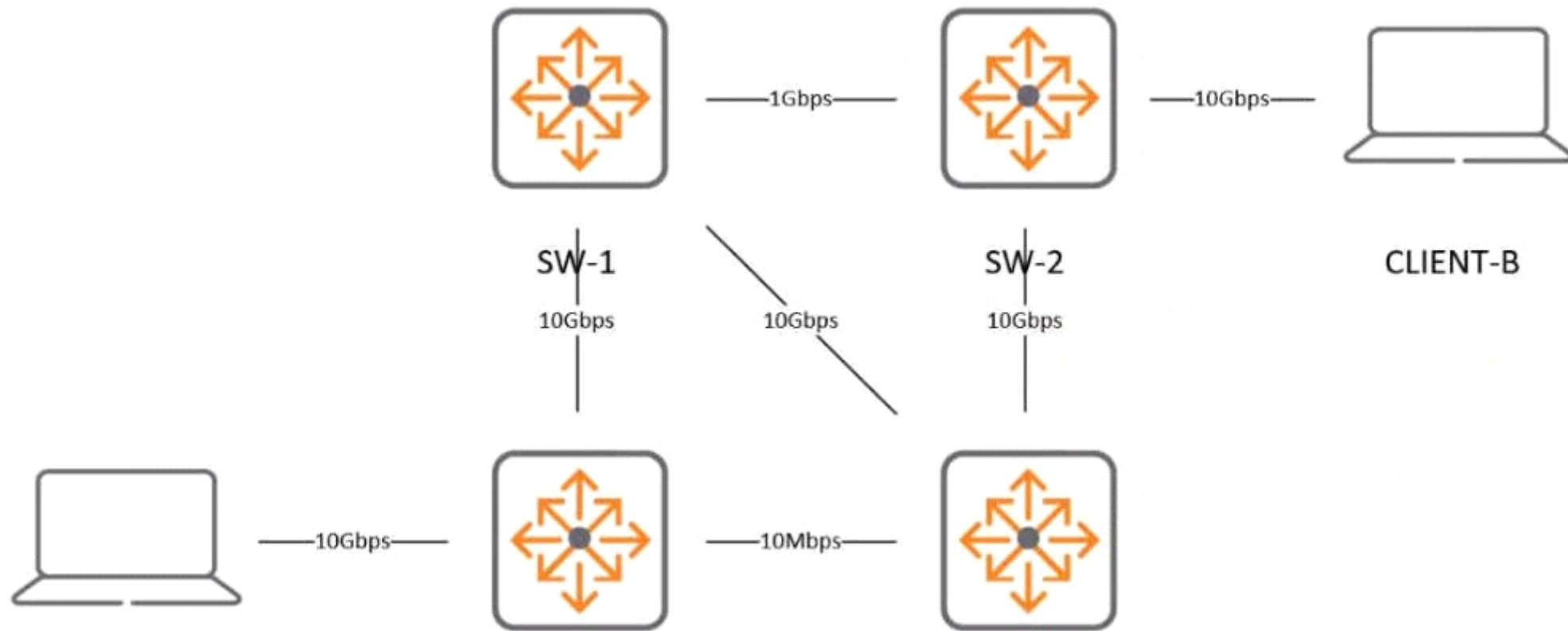
---

**Question Type:** MultipleChoice

---



A customer would like to utilize some ArubaOS-CX 6300F switches to perform OSPF routing.



With the ports set up as routed ports, and default parameters for OSPF, which action is the simplest way to allow the fastest communication...

**Options:**

---

- A- Utilize Equal-cost multi-path routing to aggregate more bandwidth on the WAN.
- B- Set the OSPF cost parameters on every interface on every switch according to the Bandwidth of each link
- C- No action is required
- D- Set the OSPF reference bandwidth to 10 or higher

**Answer:**

---

C

## Question 9

---

**Question Type:** MultipleChoice

---

When planning a new wired network solution for an organization, there are technical goals that must be achieved to support the organization objectives and their applications and services.

Which options are valid technical goals? (Select two.)

**Options:**

---

- A- Reduce the cost of wiring.

- B-** Transform the process of acquisition of a new network solution from a CAPEX to an OPEX model
- C-** improve the network throughput
- D-** Replace hardware that is reaching end of support with a technology refresh.
- E-** Accelerate the ordering process of new network hardware.

**Answer:**

---

B, E

## Question 10

---

**Question Type:** MultipleChoice

---

After a Proof of Concept where NetEdit was used to troubleshoot the network, the customer agrees that NetEdit meets some of its technical goals.

Which technical goals does NetEdit meet? (Select two.)

**Options:**

---

- A-** improve reliability of mission-critical applications

**B-** improve the network's scalability

**C-** improve the network throughput

**D-** Minimize network downtime

**E-** Simplify network management

**Answer:**

---

A, D

**To Get Premium Files for HPE6-A69 Visit**

**<https://www.p2pexams.com/products/hpe6-a69>**

**For More Free Questions Visit**

**<https://www.p2pexams.com/hp/pdf/hpe6-a69>**

