



Free Questions for 4A0-106 by go4braindumps

Shared by Hampton on 20-10-2022

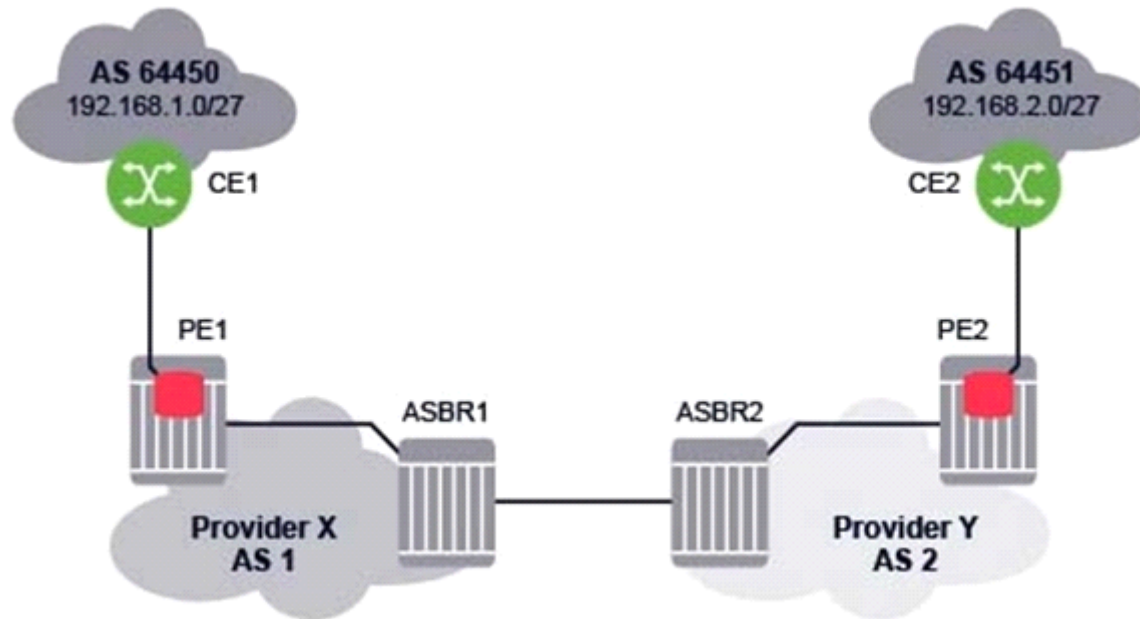
For More Free Questions and Preparation Resources

Check the Links on Last Page

Question 1

Question Type: MultipleChoice

Which of the following statements about Inter-AS model VPRN is TRUE?



Options:

A- MP-iBGP is used between PE1 and ASBR1 to exchange VPN-IPv4 routes.

B- eBGP is used between ASBR1 and ASBR2 to exchange IPv4 routes.

C- MP-eBGP is used between PE1 and PE2 to exchange VPN-IPv4 routes.

D- MP-eBGP is used between ASBR1 and ASBR2 to exchange labeled IPv4 routes.

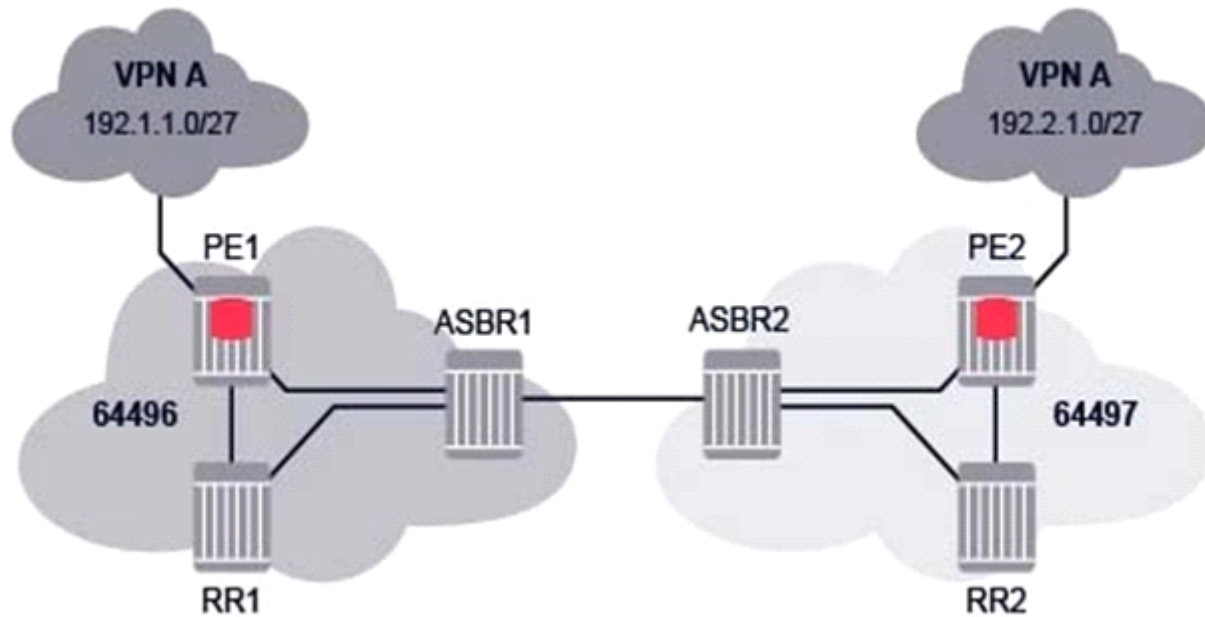
Answer:

D

Question 2

Question Type: MultipleChoice

For the Inter-AS model C VPRN, which of the following is FALSE when an IP packet is sent from 192.1.1.1 to 192.2.1.1?



Options:

- A- PE1 pushes three labels on the IP packet: a VPN label, a BGP label, and an LDP transport label.
- B- ASBR1 pops the LDP label, swaps the BGP label and forwards the IP packet to ASBR2.
- C- ASBR2 swaps the BGP label and pushes an LDP transport label.
- D- PE2 pops all labels and forwards the unlabeled packet to its destination.

Answer:

B

Question 3

Question Type: MultipleChoice

Which of the following statements about inter-AS model C VPRNs is FALSE?

Options:

- A-** VPN-IPv4 routes are neither held, nor re-advertised, by the ASBRs.
- B-** Each ASBR propagates the routes received from its neighbor ASBR as labeled IPv4 routes in its own AS.
- C-** ASBRs exchange labeled IPv4 routes for the system addresses of PE routers.
- D-** ASBRs exchange customer routes as labeled IPv4 routes.

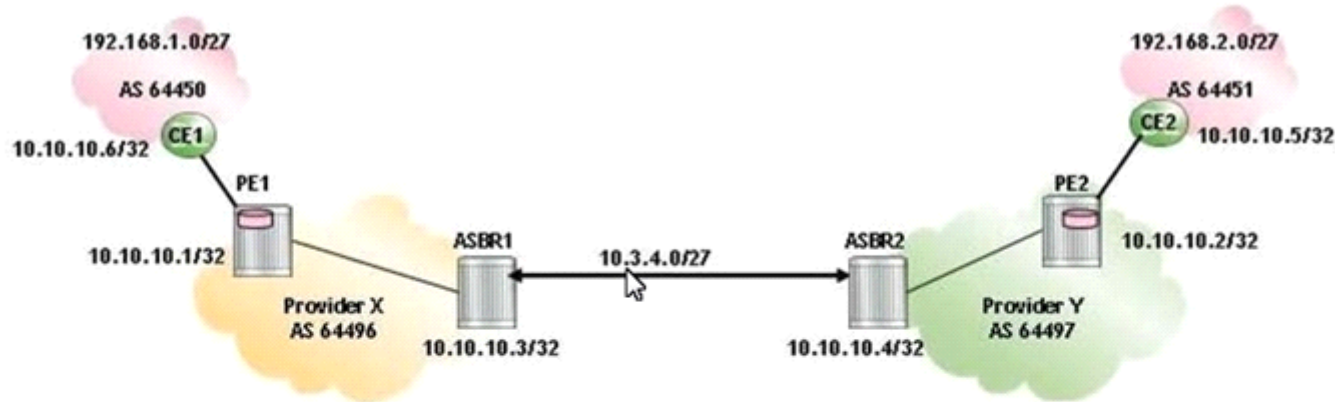
Answer:

D

Question 4

Question Type: MultipleChoice

For the Inter-AS model VPRN, which of the following statements about the inter-as-label output on ASBR1 is TRUE?



```
ASBR1# show router bgp inter-as-label
=====
BGP Inter-AS labels
=====
NextHop                Received      Advertised   Label
                        Label         Label        Origin
-----
10.10.10.1              131070       131068       Internal
10.3.4.4                131068       131069       External
```

Options:

A- ASBR1 includes label 131069 in the route update sent to ASBR2.

- B-** ASBR1 includes label 131068 in the route update sent to ASBR2.
- C-** ASBR1 includes label 131068 in the route update sent to PE1.
- D-** ASBR1 includes labels 131068 and 131069 in the route update sent to ASBR2.

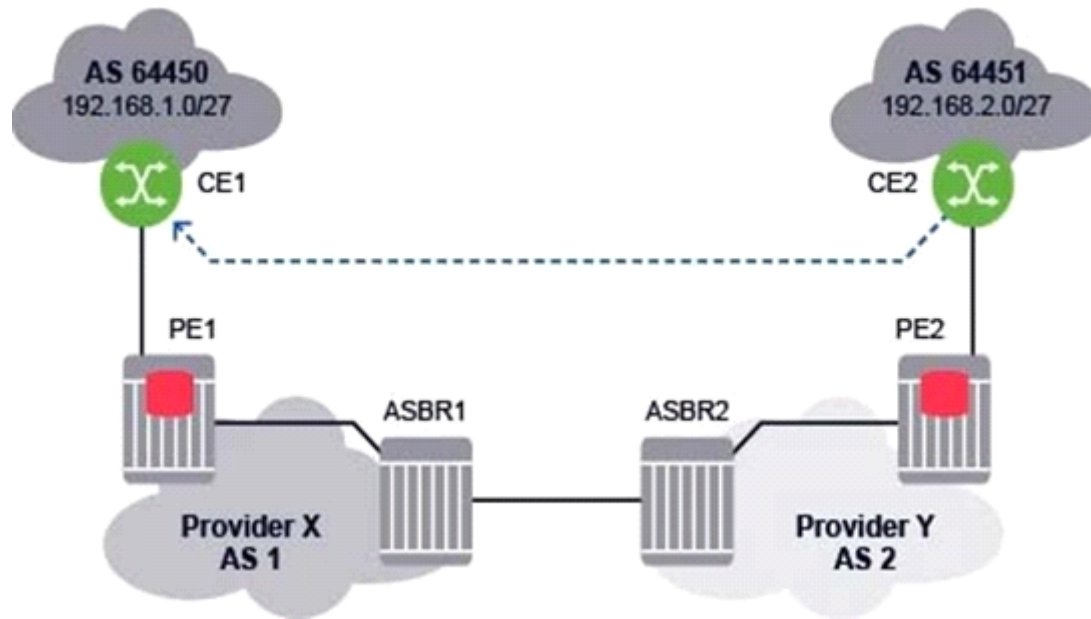
Answer:

C

Question 5

Question Type: MultipleChoice

For the Inter-AS model VPRN, which of the following is FALSE when CE2 sends an IP packet to 192.168.1.1?



Options:

- A- PE2 pushes two labels on the IP packet and forwards it to ASBR2.
- B- ASBR2 forwards the IP packet with one label to ASBR1.
- C- ASBR1 label-switches the packet and forwards it with one label to PE1.
- D- PE1 forwards an unlabeled IP packet to CE1.

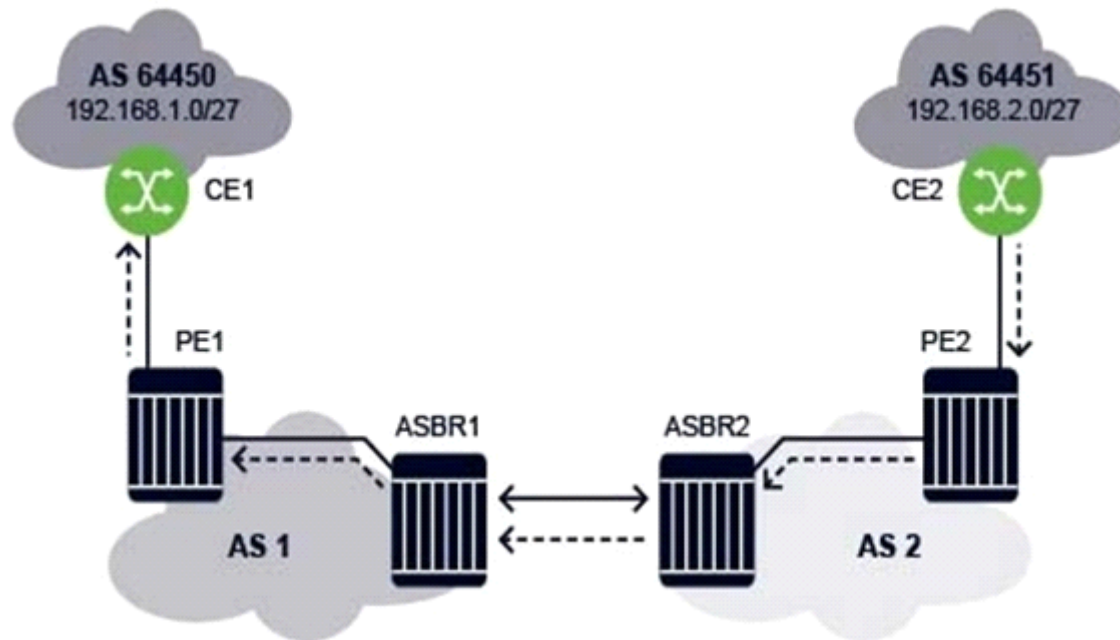
Answer:

C

Question 6

Question Type: MultipleChoice

For the Inter-AS model A VPRN, which of the following is FALSE when CE2 sends an IP packet to 192.168.1.1?



Options:

- A- CE2 forwards an unlabeled IP packet to PE2 via the VPRN interface.
- B- PE2 pushes one label on the IP packet and label-switches it to ASBR2.
- C- ASBR2 forwards an unlabeled IP packet to ASBR1.
- D- ASBR1 pushes two labels on the IP packet and label-switches the packet to PE1.

Answer:

B

Question 7

Question Type: MultipleChoice

Which of the following commands produces the output for the inter-AS model B VPRN?

Options:

A- show router 10 bgp routes vpn-ipv4

B- show router bgp routes

C- show router bgp routes vpn-ipv4

D- show router route-table

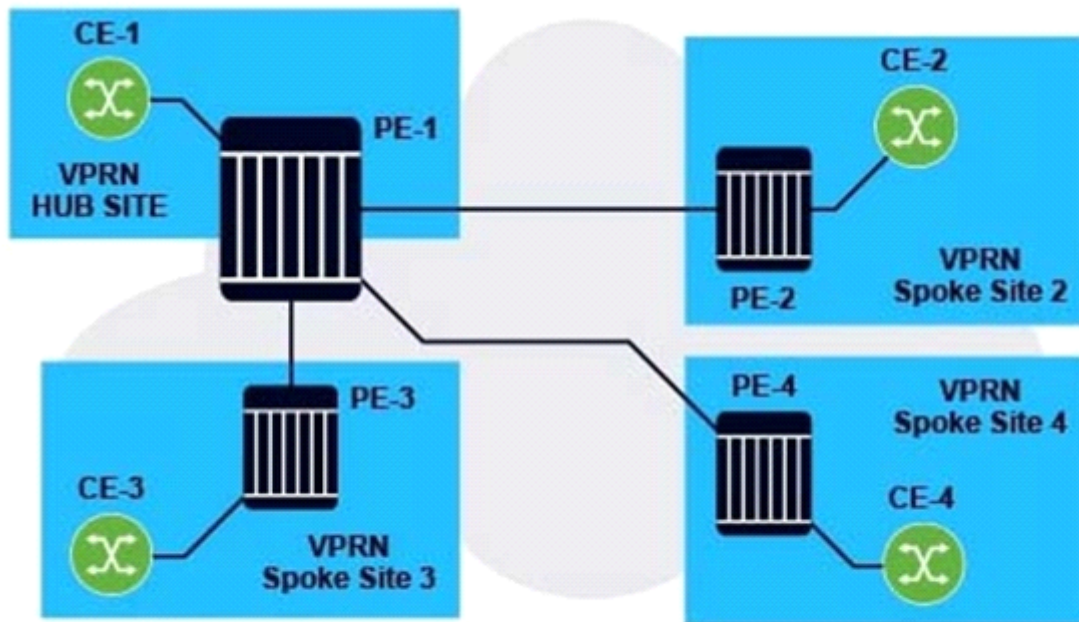
Answer:

C

Question 8

Question Type: MultipleChoice

Community lists are configured for the PE hub and spoke VPRN.



```
community "Hub_Site" members "target:65100:1"
community "Spoke_Sites" members "target:65100:2"
```

Which communities should be imported by the VPRN service on PE1?

Options:

- A- "Spoke_Sites"
- B- "Hub_Site"
- C- "Spoke_Sites" and "Hub_Site"

D- No communities should be imported.

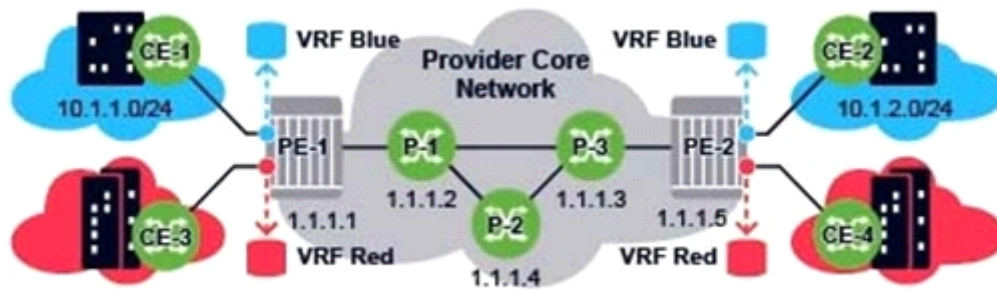
Answer:

A

Question 9

Question Type: MultipleChoice

What is wrong with the VPRN configuration applied on this Nokia 7750 SR?



```

PE-1# configure service vprn 20 customer 101 create
description "VPRN Blue"
router-id 1.1.1.1
route-distinguisher 65100:101
auto-bind-tunnel
resolution-filter ldp
resolution filter
exit
vrf-target target:65100:101
interface "to-CE-1" create
address 10.1.0.1/27
sap 1/1/2 create
exit
exit
exit

```

Options:

- A- The VPRN ID must match the value 101 used in the vrf-target command.
- B- The VPRN ID must match the value 101 used in the route-distinguisher command.
- C- The router-id command should not be used in this context.
- D- The "no shutdown" command must be configured for the VPRN to be operationally UP.

Answer:

C

To Get Premium Files for 4A0-106 Visit

<https://www.p2pexams.com/products/4a0-106>

For More Free Questions Visit

<https://www.p2pexams.com/nokia/pdf/4a0-106>

